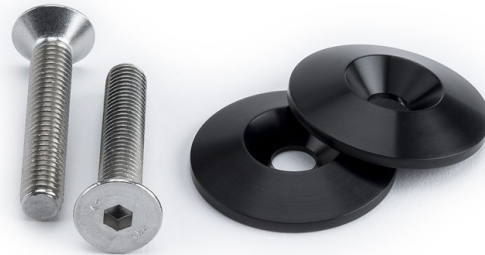


MULE PASSENGER PEG BLOCK OFFS FOR THRUXTON 1200

PB304-004-B & PB304-004-BR



TIME REQUIRED:

5 MINUTES

DIFFICULTY:



TOOLS REQUIRED:

- 5mm and 6mm Allen wrench
- 10mm socket wrench

RECOMMENDED RELATED UPGRADES



PREDATOR PRO



GP EXHAUST



STAINLESS BAR ENDS



RETRO TURN SIGNALS

WARNING: Laws concerning this product vary from state/province to state/province. Your state/province may prohibit its use on public roads or restrict its use to novelty, show use, off-road areas, or race facility areas only. In some states/provinces off-road uses are also prohibited. The manufacturer and retailer assume no responsibility for any use or application of this product in violation of any applicable law. Check applicable laws and regulations before installing products.

WARNING: It is recommended that this kit be installed by a certified Triumph technician, following the Triumph service manual to aid in proper fitting. Verify all torque specs in Triumph service manual.



PREP: For this installation, you will need a 5mm Allen wrench, a 6mm Allen wrench, and a 10mm socket wrench.



STEP 1: Use a 6mm Allen wrench and a 10mm socket wrench to remove the stock rubber passenger peg block off.



This is what you should remove from the motorcycle: the block off, the bolt, and the nut.



STEP 2: Use a 5mm Allen wrench and a 10mm socket wrench to install the Mule Passenger Peg Block Offs. Reuse the stock nut to install.



This is what the Mule Passenger Peg Block-Off looks like after successful installation.



STEP 3: Use a 6mm Allen wrench and a 10mm socket wrench to remove the stock rubber passenger peg block off.



STEP 4: Use a 5mm Allen wrench and a 10mm socket wrench to install the Mule Passenger Peg Block Offs. Reuse the stock nut to install.



Installation complete!