

# *B R I T I S H* *C U S T O M S*

18426 South Broadway  
Gardena, CA 90248  
Toll Free: +1 (877) 999-BRIT support@british-customs.com  
[www.britishcustoms.com](http://www.britishcustoms.com)

## *Billet Headlight Ears*

PART NUMBER: BC504-003-B



*Tools Required:*

*T25 Torx  
38mm socket  
4mm Allen  
6mm Allen  
Breaker Bar  
Torque Wrench*

*Clean Blanket/Towel  
Microfiber Towel  
Rubbing Alcohol*

**WARNING: Always properly support vehicle with a stand and/or lift when servicing or performing any work.**

**Unstable vehicles may present dangerous conditions and may cause property damage and/or personal injury.**

**NOTE: Read through all instructions before beginning installation.**

## **Removal**

---

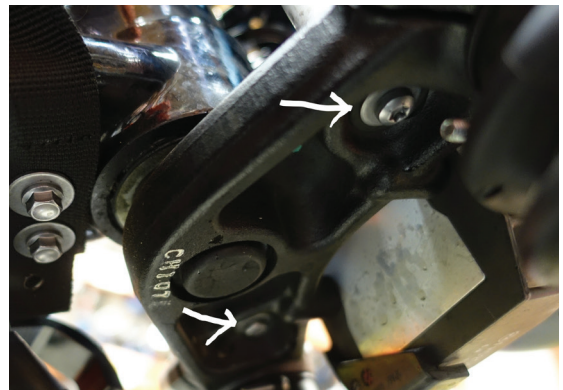
1. Remove Riders Seat
  1. Insert the ignition key into the seat lock and turn it counter-clockwise while pressing down on the rear of the seat.
  2. Lift the seat up from the back and slide rearwards for complete removal.
2. Disconnect the battery, negative (black) lead first.
3. Use a clean microfiber cloth and rubbing alcohol to clean headlight housing, headlight lens, and surrounding area.

**NOTE: Place a blanket or soft towel over the fuel tank to help prevent any scratching or damage.**

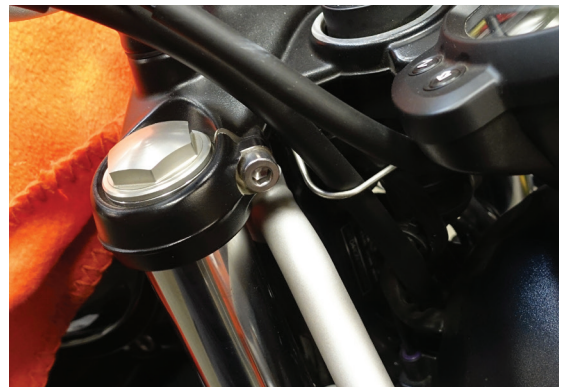
4. Remove screws securing headlight.



5. Use T25 Torx and remove the two screws securing the headlight bracket under the lower yoke.



6. Use 6mm allen and loosen the upper yoke pinch bolts.



7. Use 6mm to remove the handlebar clamp bolts and remove the top clamp.



8. Place a clean towel over the instrument cluster, then lift and set handlebars on the instrument cluster.



9. Use 38mm socket and breaker bar to remove the steering stem bolt.



 **PRO-TIP**

Wrap the steering stem bolt, once around, with masking tape to help keep from marring the chrome.

10. With steering stem bolt removed, place one hand under the upper yoke, one under the instrument cluster, and lift the upper yoke off the fork legs. Rest it gently on top of the fork legs.



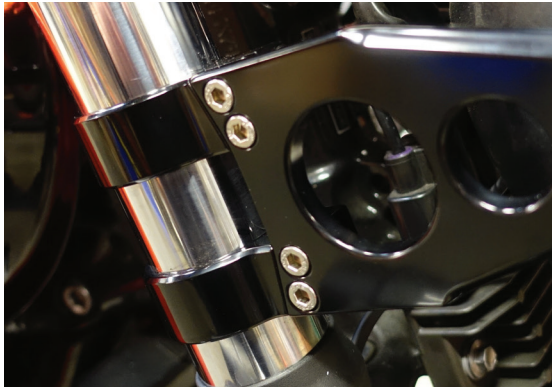
11. Pull down on the stock headlight brackets, freeing them from the underside of the upper yoke. Be sure to collect the rubber dampers if they stick to the upper yoke.



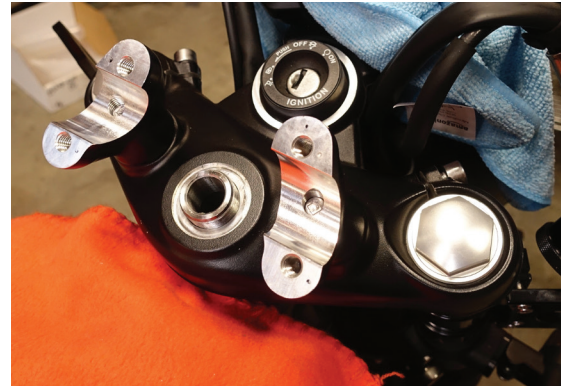
## Installation

**NOTE: Use 4mm allen and loosen screws on British Customs Headlight Ears before installation.**

1. Gently lift up the upper yoke and place British Customs (BC) headlight ears over the fork legs. Screw heads facing outward.



2. Gently place the upper yoke over the fork legs and steering stem. Press down to seat the upper yoke.



3. Use 38mm socket and tighten steering stem bolt. Torque to **90 Nm (66 ft-lbs.)**



4. Use 6mm allen and tighten upper yoke pinch bolts. Torque to **24 Nm (17 ft-lbs.)**
5. Place handlebars on risers and use 6mm allen to loosely tighten upper clamp bolts.



NOTE: There is an alignment cross on the front side of the handlebar. Align the cross with the handlebar riders and clamp.



6. Once the handlebar is aligned, snug the handlebar clamp bolts with 6mm allen. Starting with the front bolts, torque to **24 NM (17 ft-lbs.)**

7. Install headlight to ears and lightly tighten headlight.



8. From the front of the vehicle, adjust the headlight and headlight ears until they are centered. Use 4mm allen and lightly tighten the 4 headlight ear screws on each side.



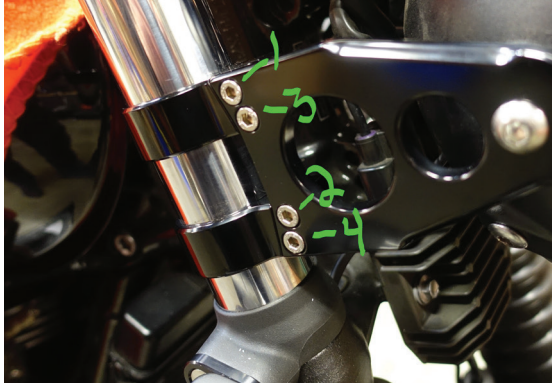
9. Check that the distance from the headlight ear to the upper yoke is the same on both sides.



10. Tighten the headlight mount screws. Torque to **10 Nm (88 in-lbs.) INCH-LBS**



11. Use 4mm, in an alternating pattern, begin tightening the bolts 1/4 turn at a time until snug. Torque to **10 Nm (88 in-lbs.) INCH-LBS**



12. Reconnect battery, positive (red) lead first.
13. Reinstall Rider Seat.
14. Readjust headlight alignment following instructions below.

### **Headlight Vertical Adjustment**

1. Switch the headlight low beam on.
2. Loosen the headlight assembly mounting screws sufficiently to allow restricted movement of the headlight.
3. Adjust the position of the headlight to give the required beam setting.
4. Tighten the mounting fixings to **10 Nm (88 in-lbs.) INCH-LBS**
5. Recheck the headlight beam setting.

6. Switch the headlight off when the beam setting is satisfactorily set.

If any problem is found, please carefully follow through the installation steps again. If problem still persists, please call **British Customs Customer Support at (877) 999-2748.**