

# *B R I T I S H* *C U S T O M S*

18426 South Broadway  
Gardena, CA 90248  
Toll Free: +1 (877) 999-BRIT support@british-customs.com  
[www.britishcustoms.com](http://www.britishcustoms.com)

## *Pan Taillight Kit*

**Part Number: BC502-020-B**



***NOTE: Pan Taillight requires trimming the inner fender and removing the factory taillight and turn signals. Additional turn signals will be required for Street Use.***

***Tools Required:***

*T30 Torx  
8mm Socket  
10mm Socket  
4mm Allen Wrench  
5mm Allen Wrench*

*Cut-off Wheel or Bandsaw  
Metal File or Sand Paper  
Torque Wrench*

**WARNING:** Always properly support vehicle with a stand and/or lift when servicing or performing any work.

Unstable vehicles may present dangerous conditions and may cause property damage and/or personal injury.

**NOTE:** Read through all instructions before beginning installation.

## Removal

---

### 1. Remove Riders Seat

1. Insert the ignition key into the seat lock and turn it counter-clockwise while pressing down on the rear of the seat.
2. Lift the seat up from the back and slide rearwards for complete removal.

### 2. Disconnect the battery, negative (black) lead first.

### 3. Disconnect rear light harness connector next to Engine ECM.



### 4. STREET SCRAMBLER: Use 4mm allen to remove luggage rack.



### 5. STREET SCRAMBLER: Use 6mm allen to remove the luggage rack mounting bracket and rear cowling.



### 6. Use T30 Torx to loosen fender mounting hardware. Support rear of the fender, then continue loosening until the fender drops free.

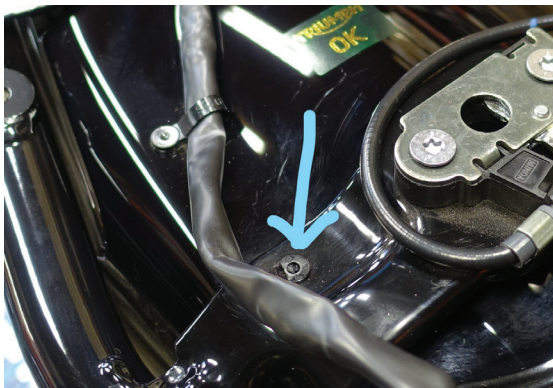




 **PRO-TIP**

Fender is weighted heavily toward the rear because of the factory light assembly. Use caution when removing the final screws, so the fender does not fall or hit the underside of the tail section.

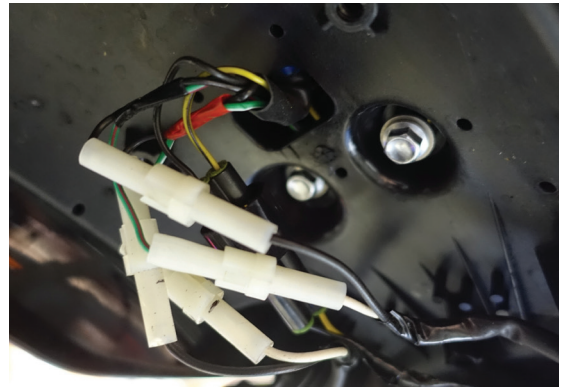
7. Un-clip wiring harness from seat latch area and remove rear fender by squeezing and twisting clips.



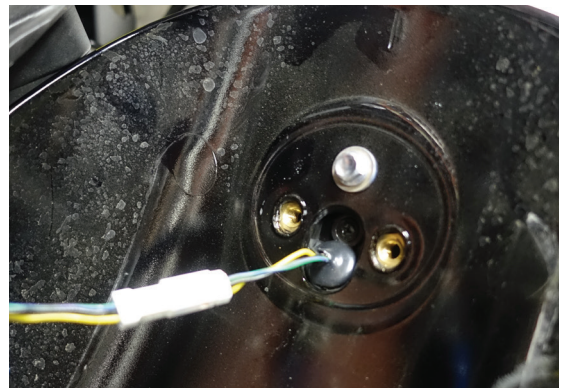
8. Place rear fender on a clean, padded surface for the remainder of the removal process.
9. Use T20 Torx to remove harness cover from rear fender assembly.



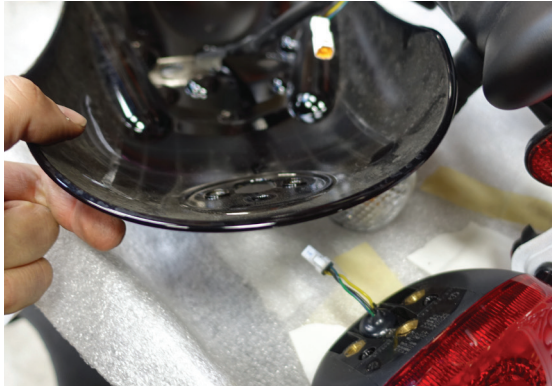
10. Disconnect wiring found under the harness cover. Use 8mm socket to remove two bolts securing the inner fender guard.



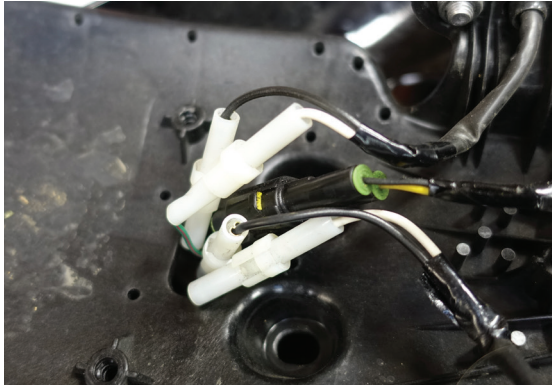
11. Disconnect the taillight harness from factory harness. Use 8mm socket to remove remaining taillight mounting bolts.



12. Remove taillight from the rear fender.



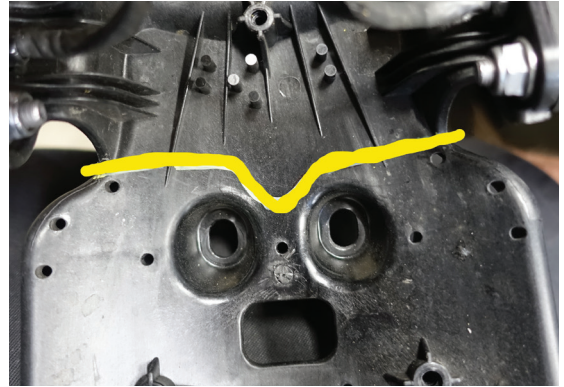
13. Pull rear light wiring from the inner fender to clear room for trimming.



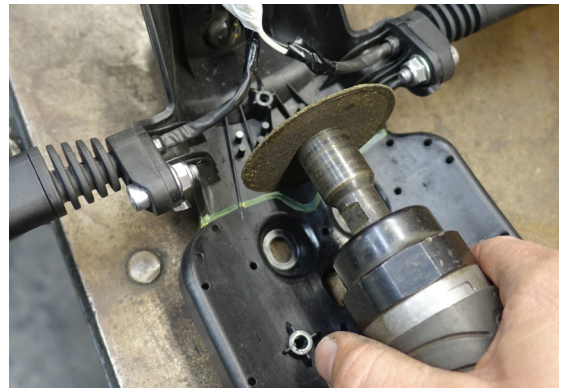
**PRO-TIP**  
Wrap the wiring connections together with masking tape to keep them out of your way during trimming.



14. Mark the inner fender with a paint pen or marker, as shown.



15. Use cutoff wheel to trim off back half of inner fender, removing the lights from the inner fender.



**PRO-TIP**  
Trimming can also be done with a band saw for a quick and clean cut.



16. Use metal file and/or sand paper to clear off the plastic burrs and sharp edges.



### Installation

1. Pull factory wiring harness from the rear fender hole.



2. Use supplied spacers on back of the Pan taillight assembly. These are required for the taillight to sit properly spaced off the fender.



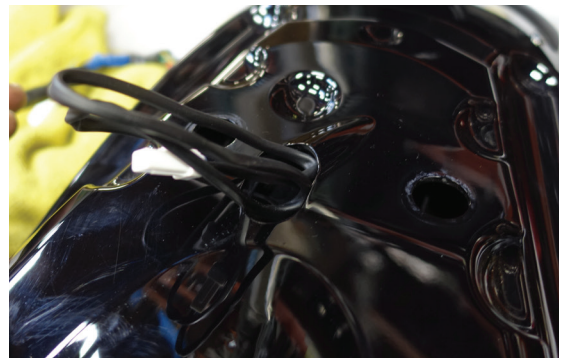
3. Install Pan taillight to rear fender and run wiring through large hole.



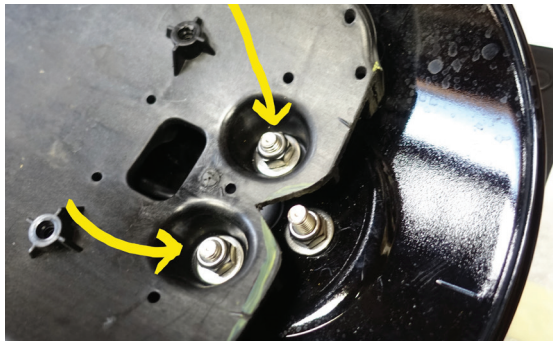
4. Use 10mm socket, one supplied nyloc nut and one washer to secure taillight to rear fender using rearmost position.



5. Run Pan taillight wiring on inside of the fender. Pull through oblong hole in the fender where you pulled factory wiring through the Step 1.



6. Install inner fender using 10mm socket, remaining nyloc nuts and washers to snug inner fender and taillight to fender. Do not tighten at this time.



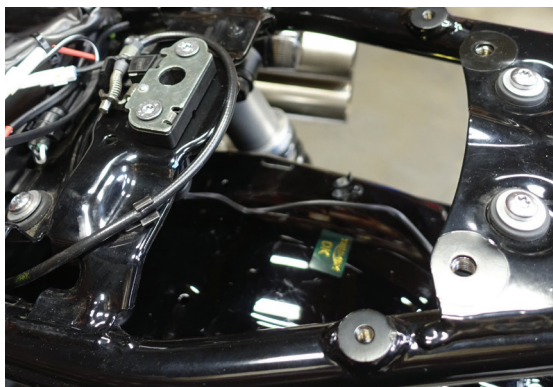
**ATTENTION:**

**\*If installing British Customs Rear Turn Signal Kit, refer to those instructions now.**

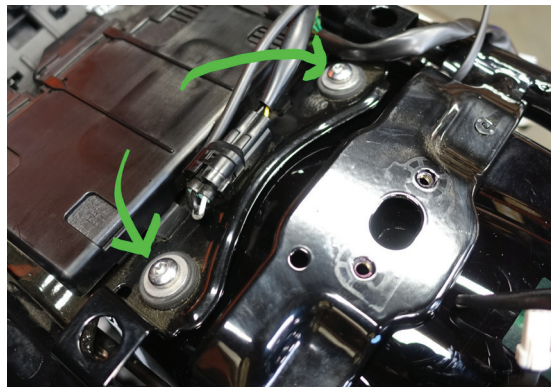
**\*If Installing British Customs Slammer Seat, refer to those instructions now.**

**Otherwise, continue with installation.**

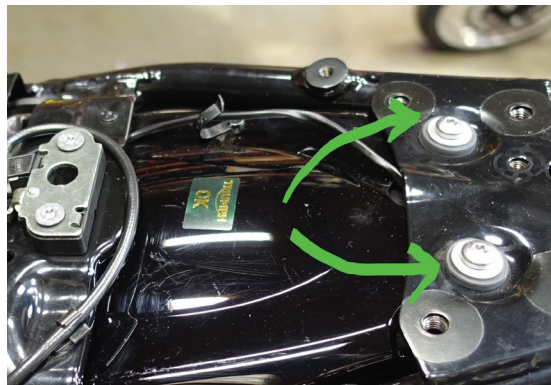
7. Lift rear fender into place, making sure Pan taillight harness stays on top of the fender and harness goes under the seat latch area.



8. Use T30 Torx and snug the front fender mounting bolts.



9. Use T30 Torx and snug the rear fender mounting bolts.



10. Tighten front and rear fender mounting bolts. Torque to **15 Nm (132 in-lbs) \*INCH-LBS**

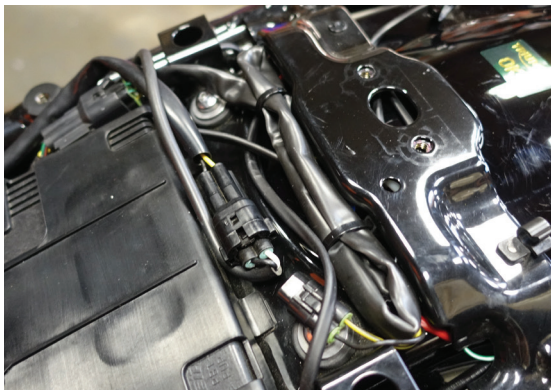
11. Connect factory taillight harness to factory connector next to Engine ECM.



12. Connect Pan taillight harness to factory harness. Zip-tie excess wiring together.



13. Tuck wiring slightly under the seat latch mount for clean install.



14. Align Pan taillight for proper appearance. Use 10mm socket to tighten taillight mount nuts on underside of fender. Torque to **8 Nm (70 in-lbs) \*INCH-LBS**



15. Place rear seat cowl and luggage rack mounting bracket in factory location.



16. Use 6mm allen and tighten luggage rack mounting bracket hardware. Torque to **15 Nm (132 in-lbs) \*INCH-LBS**

17. Place luggage rack on mounting bracket, use 4mm allen to secure luggage rack to mounting bracket. Torque to **8 Nm (70 in-lbs)**  
**\*INCH-LBS**



18. Reconnect the battery, positive (red) lead first. Reinstall Factory Rider Seat.

If any problem is found, please carefully follow through the installation steps again. If problem still persists, please call **British Customs Customer Support at (877) 999-2748.**