

B R I T I S H *C U S T O M S*

18426 South Broadway
Gardena, CA 90248
Toll Free: +1 (877) 999-BRIT support@british-customs.com
www.britishcustoms.com

Fender Eliminator Kit Cateye

*PART NUMBER: BC410-028-R
BC410-028-S*



NOTE: Fender Eliminator Kit must be installed with British Customs Slammer Seat on all models, except Street Scrambler. The factory seat skirt on most models is too long and will cover up the taillight assembly.

NOTE: Fender Eliminator Kit removes rearward facing turn signals. Additional turn signals will be required for Street Use.

NOTE: Fender Eliminator Kit removes Rear Grab Bar on applicable models and will not be reused. Street Scrambler Luggage Rack is compatible for installation.

Tools Required:

*T30 Torx
T40 Torx
10mm Wrench
10mm Socket*

*12mm Socket
4mm Allen Wrench
5mm Allen Wrench*

WARNING: Always properly support vehicle with a stand and/or lift when servicing or performing any work.

Unstable vehicles may present dangerous conditions and may cause property damage and/or personal injury.

NOTE: Read through all instructions before beginning installation.

Removal

1. Remove Riders Seat
 1. Insert the ignition key into the seat lock and turn it counter-clockwise while pressing down on the rear of the seat.
 2. Lift the seat up from the back and slide rearwards for complete removal.
2. Disconnect the battery, negative (black) lead first.
3. Disconnect Factory Rear Light Harness at the connector.



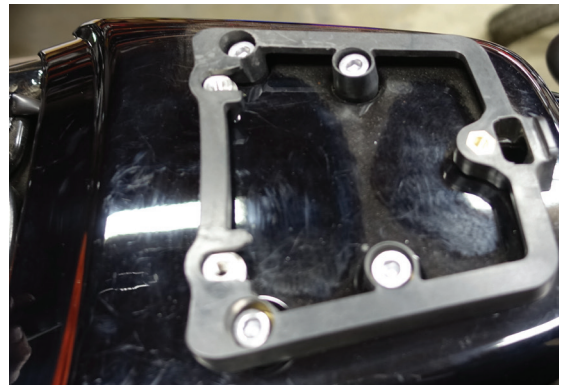
4. Un-clip Seat Release Cable from left side of fender.



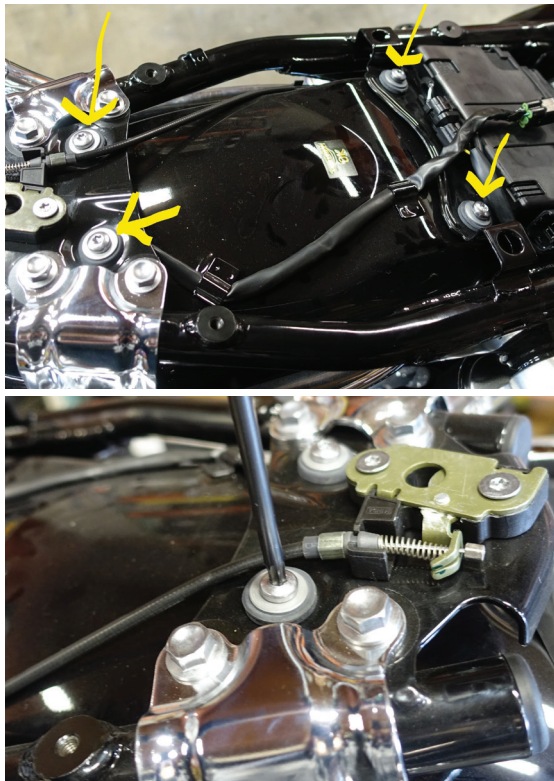
5. STREET SCRAMBLER ONLY: Use 4mm allen to remove luggage rack.



6. STREET SCRAMBLER ONLY: Use 6mm allen to remove the luggage rack mounting bracket and rear cowling.



7. Use T30 Torx to loosen the four fender mounting screws. Do not fully remove at this time.



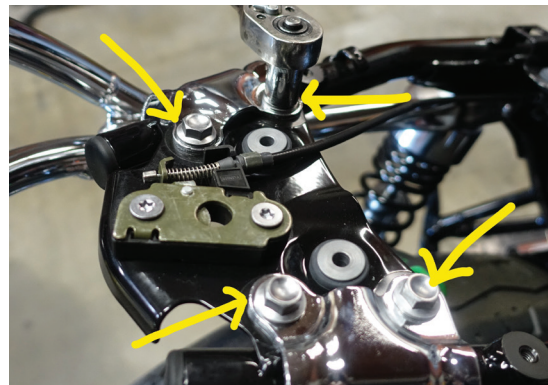
NOTE: Fender is weighted heavily toward the rear because of the factory light assembly. Use caution when removing the final screws, so the fender does not fall or hit the underside of the tail section.

8. Support the rear of the fender, then continue removing the fender mounting screws and place screws to the side for installation later.

9. Use T40 Torx to remove the grab bar screws located behind each rear shock.



10. Use 12mm socket to remove the grab bar rear mounting bolts and remove grab bar from motorcycle.



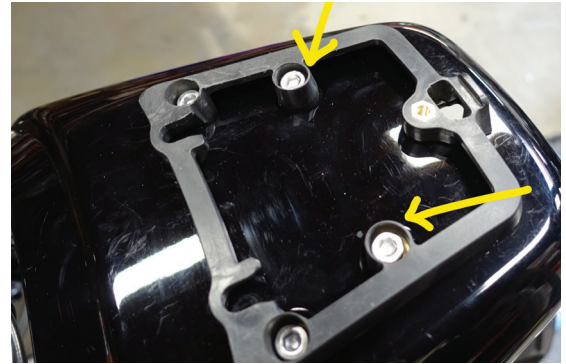
Installation

NOTE: British Customs Fender Eliminator Kit Cateye has been tested with the factory suspension and tire combo. If your bike has been modified, please verify you have proper clearance when the suspension is collapsed.

1. **NON-STREET SCRAMBLER ONLY:** Use supplied 8mm x 16mm long screws, lock washers and washers; secure British Customs fender kit to rearward threaded holes on the underside of tail section. **SKIP TO STEP 7.**



2. **STREET SCRAMBLER ONLY:** Place seat cowl and luggage rack mount in the factory location on the tail section.
3. **STREET SCRAMBLER ONLY:** Use supplied 40mm length bolts in the rear holes of the luggage mounting rack. Reuse factory hardware in the front.

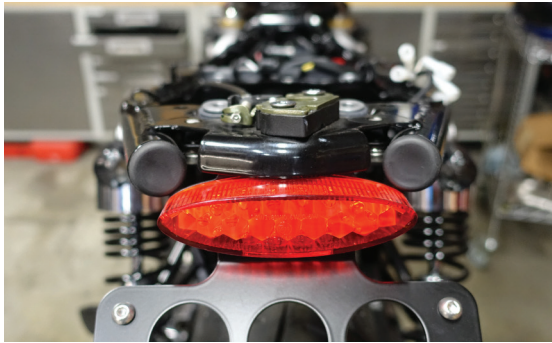


4. **STREET SCRAMBLER ONLY:** Use 6mm allen and tighten luggage mounting rack bolts. Torque to **10 Nm. (88 in-lbs)**
*INCH-LBS
5. **STREET SCRAMBLER ONLY:** Install the fender eliminator kit over the long bolts from underneath, and secure with supplied 8mm washers and nyloc nuts.



6. **STREET SCRAMBLER ONLY:**
Align fender kit evenly between frame rails, use 13mm wrench to tighten fender eliminator kit nuts. Torque to **10 Nm. (88 in-lbs)**
*INCH-LBS

7. Align fender kit evenly between frame rails. Use 5mm allen wrench to tighten the 8mm screws.



Place the inner fender under the tail section, where the factory fender mounts are located, with the notch in the front left position.

NOTE: Seat Release cable goes through the notch in the front left position.

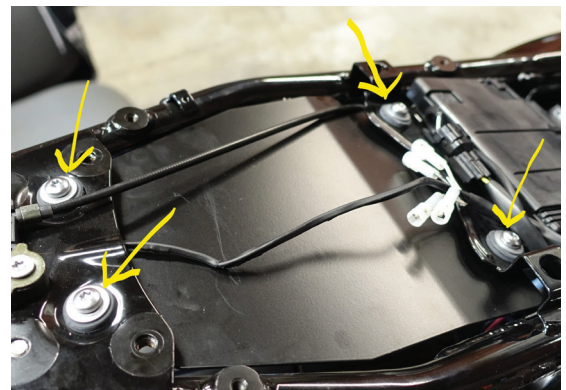


NOTE: Make sure the rear light wiring harness is on top of the inner fender, as shown.



8. Insert the four factory T30 Torx screws through the top of the fender mounts and secure from underneath with supplied 6mm washer and 6mm nyloc nut.

NOTE: Longer T30 Torx screws go in the rear holes.

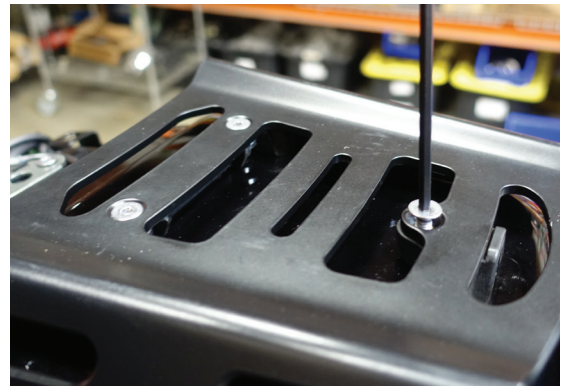


9. Use T30 Torx and 10mm socket to tighten inner fender screws.
Torque to 10 Nm. (88 in-lbs)
Note INCH POUNDS
10. Plug in rear light harness to factory connector.



NOTE: If installing British Customs Rear Shock Mount Turn Signal Kit, please refer to those instructions now, beginning with Step 1 of Installation. Otherwise, continue with this installation.

11. Reconnect battery, positive (red) lead first.
12. Check tail light functionality.
13. STREET SCRAMBLER ONLY:
Place luggage rack on mounting bracket, use 4mm allen to secure luggage rack to mounting bracket.
Torque to **8 Nm (70 in-lbs)**
***INCH-LBS**



14. Install British Customs Slammer Seat for Non-Street Scrambler Models.
15. Use 4mm allen wrench and 10mm wrench to install license plate to fender eliminator kit.

If any problem is found, please carefully follow through the installation steps again. If problem still persists, please call **British Customs Customer Support at (877) 999-2748.**