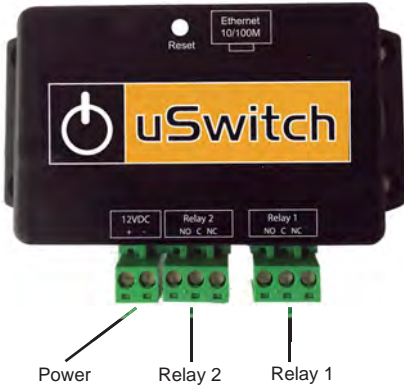




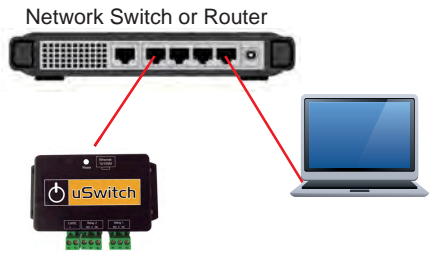
1



Connect a 12VDC 1 Amp power supply to the + and - Terminals on uSwitch.

Connect the relay contacts as desired.

2



Connect an Ethernet cable between the uSwitch Ethernet port and an Ethernet port on the network switch/router.

Connect a computer to the network switch/router and set the IP address of the computer to 192.168.1.x with subnet of 255.255.255.0 (x can be any unused address on that network 2-254).

uHave Control

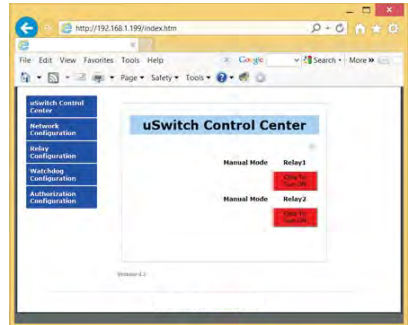
3



Connect to uSwitch by entering the factory default IP address (<http://192.168.1.199>) into the address bar on your computer's browser.

The first time you log on, a password dialog box will appear. Enter "admin", for both the User name and Password fields (all lower case). Once logged on, these can be changed.

4



Verify relays are working by pressing buttons 1 and 2 on the web relay control page.

For more details, advanced configuration and watchdog options download the uSwitch manual at www.uhavecontrol.com/support