



A



1. Connect uSwitch PoE to a 12-48VDC power supply. (**max output DC Voltage needed for any connected PoE device should be the minimum output voltage from the power supply used**).

2. Connect the included network cable from the uLink In port to POE port 1.

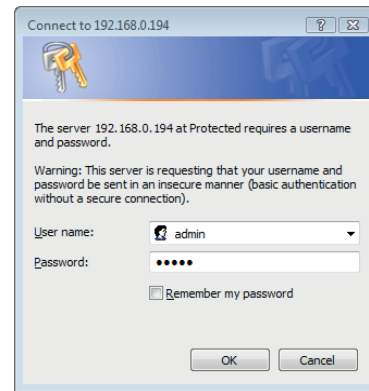
3. Connect UPLINK port to a network router or Modem if connecting to a LAN/WAN.

B

4. Set up a computer to be on the same network/subnet as uSwitch PoE. (To do this set the IP address of the computer to 192.168.1.X with subnet of 255.255.255.0). (X can be any number from 2-250).

5. Connect to the uSwitch by putting the following URL in the network browser address window: <http://192.168.1.199>.

6. A security screen will pop up if this is the first time you are logging into the uSwitch at this address (see an example below). Enter "admin", for both the "User name"



uHave Control

C

7. Connect PoE devices to the PoE ports. These ports can auto sense and negotiate up to 48 volts as well as non PoE devices.



D



8. A 12VDC constant output is included. This can be used to power 12v devices or wired through the on board uSwitch IP Relay to control anything remotely from anywhere over a LAN/WAN using any standard browser.

Please go to www.uhavecontrol.com to download manuals.