

Step Right Up - Circus Rings

Featuring fabrics from the Step Right Up collection by Suzy Ultman



48" square

Quilt designed by Lisa Swenson Ruble



901 E. 14th Avenue
North Kansas City, MO 64116
(816) 421-2000
www.pbsfabrics.com

Quilt designed by Lisa Swenson Ruble; Love to Color My World

Finished Quilt Size: 48" square
Finished Block Size: 12" square
Number of Blocks: 5

Yardages and Cutting

WOF means width of fabric from selvage to selvage. Remove as little fabric as possible when trimming selvage edges.

Note: Using the templates provided, trace (5) 10" circles, (5) 8" circles and (5) 6" circles onto the paper side of fusible web. Cut out loosely around each circle. Fuse circles to the wrong side of the fabric indicated below; cut out on the drawn line.

1 yard Panel, 120-21357

- Fussy cut (4) 12-1/2" squares

Fat quarter Circus Print, 120-21345

- (1) 12-1/2" square
- (1) 6" circle

Fat quarter Cats on Mint, 120-21346

- (4) 6" circles

1/3 yard Birds on Red, 120-21347

- 5 strips 1-1/2" x WOF

7/8 yard Dogs on White, 120-21349

- 2 strips 12-1/2" x WOF; subcut (4) 12-1/2" squares

1/2 yard Painter's Palette Solid Limelight, 120-102

- 8 strips 1-1/2" x WOF; cut into (2) 1-1/2" x 40-1/2" strips, (4) 1-1/2" x 38-1/2" strips, and (6) 1-1/2" x 12-1/2" strips

1-1/8 yards Painter's Palette Solid Coral, 120-049

- (4) 10" circles
- (1) 8" circle
- 6 strips 2-1/4" x WOF for binding

1 yard Painter's Palette Solids White, 121-000

- (1) 10" circle
- (4) 8" circles
- 5 strips 3-1/2" x WOF

3-1/4 yards backing fabric of choice

- 2 pieces 56" x WOF

Batting

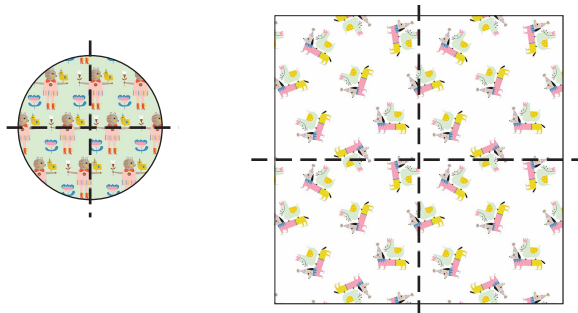
- 1 piece 56" square

Fusible web and applique pressing sheet

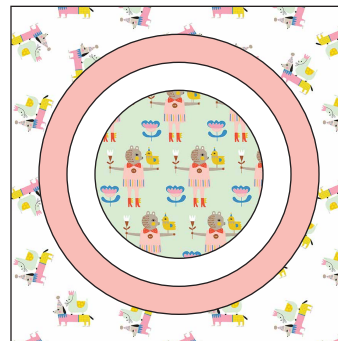
Piecing the Blocks

Use a 1/4" seam allowance for all stitching.

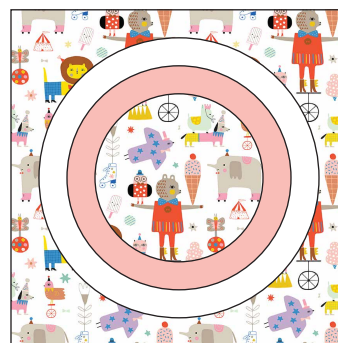
1. Fold and finger press each square and circle in half in both directions to mark the center of each piece. This will help you align the pieces for each block.



2. To make an A block, center and fuse (1) 6" Cats on Mint circle to (1) 8" White circle, matching centers. Center and fuse to (1) 10" Coral circle. Fuse the stacked circles to the center of (1) 12-1/2" Dogs on White. Use a zigzag or other decorative stitch to secure the circles in place. Make (4) A blocks.



3. In the same way, make (1) B block using (1) 6" Circus Print circle, (1) 8" Coral circle and (1) 10" White circle and (1) 12-1/2" Circus Print square.



Completing the Quilt

1. Lay out (2) A blocks and (1) 12-1/2" fussy-cut square alternating with (2) 1-1/2" x 12-1/2" Limelight strips to make the top row. Sew the pieces together. Repeat to make the bottom row.
2. Lay out (1) B block and (2) 12-1/2" fussy-cut squares alternating with (2) 1-1/2" x 12-1/2" Limelight strips to make the center row. Sew the pieces together.
3. Lay out the top, center and bottom rows alternating with (2) 1-1/2" x 38-1/2" Limelight strips. Sew the rows and strips together to complete the quilt center.
4. Sew 1-1/2" x 38-1/2" Limelight strips to opposite sides of the quilt center. Sew 1-1/2" x 40-1/2" Limelight strips to the top and bottom.
5. Trim (2) 1-1/2" x WOF Birds on Red strips to measure 40-1/2" and sew to the sides of the quilt. Sew the remaining (3) 1-1/2" x WOF Birds on Red strips short ends together into a long strip and cut (2) 42-1/2" strips. Sew to the top and bottom of the quilt.
6. Sew the (5) 3-1/2" x WOF White strips short ends together into a long strip and cut (2) 48-1/2" lengths and (2) 42-1/2" lengths. Sew the shorter strips to the sides of the quilt and the remaining strips to the top and bottom.



Quilt Assembly Diagram

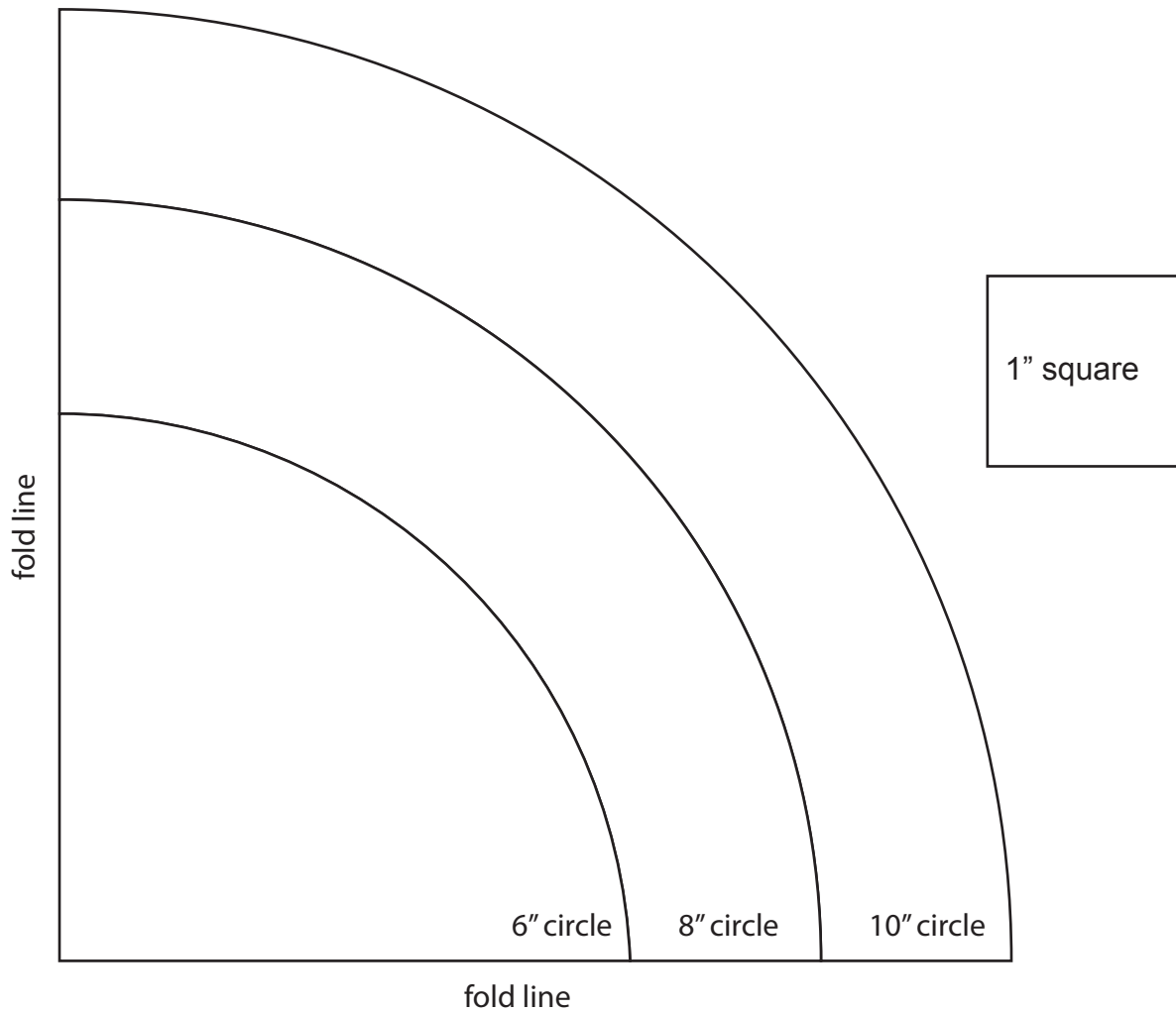
7. Remove the selvedge edges from the backing pieces. Join the pieces on the long edges with a 1/2" seam allowance. Press seam open. Trim to make a 56" square.
8. Layer, baste, and quilt and use the (6) 2-1/4" x WOF Coral strips to bind the quilt.

Circus Rings Templates

Templates are shown at 100%.

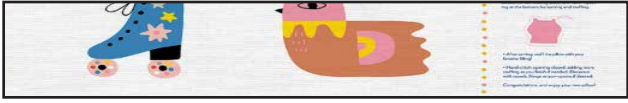
To make the full 10" diameter circle, fold an 11" square of paper in half in both directions, align folded edges with fold lines on the quarter circle template, and trace the curved edge. Cut out and unfold for the 10" diameter circle.

Repeat with 8" and 6" circles, using a square approximately 1" larger than circle diameter.



Step Right Up - Circus Rings

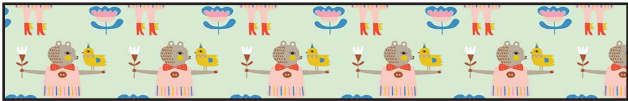
1 Kit 5 Kits 10 Kits
120-21357 Panel
 1 yard 5 yards 10 yards



120-21345 **Circus Print**
 Fat quarter 1-1/4 yards 2-1/2 yards



120-21346 **Cats on Mint**
 Fat quarter 1-1/4 yards 2-1/2 yards



120-21347 **Birds on Red**
 1/3 yard 1-2/3 yards 3-1/3 yards



1 Kit 5 Kits 10 Kits
120-21349 **Dogs on White**
 7/8 yard 4-3/8 yards 8-3/4 yards



121-102 **Painter's Palette Solid Limelight**
 1/2 yard 2-1/2 yards 5 yards



121-049 **Painter's Palette Solid Coral**
 1-1/8 yards 5-5/8 yards 11-1/4 yards



121-000 **Painter's Palette Solid White**
 1 yard 5 yards 10 yards



Backing of choice

3-1/4 yards 16-1/4 yards 32-1/2 yards