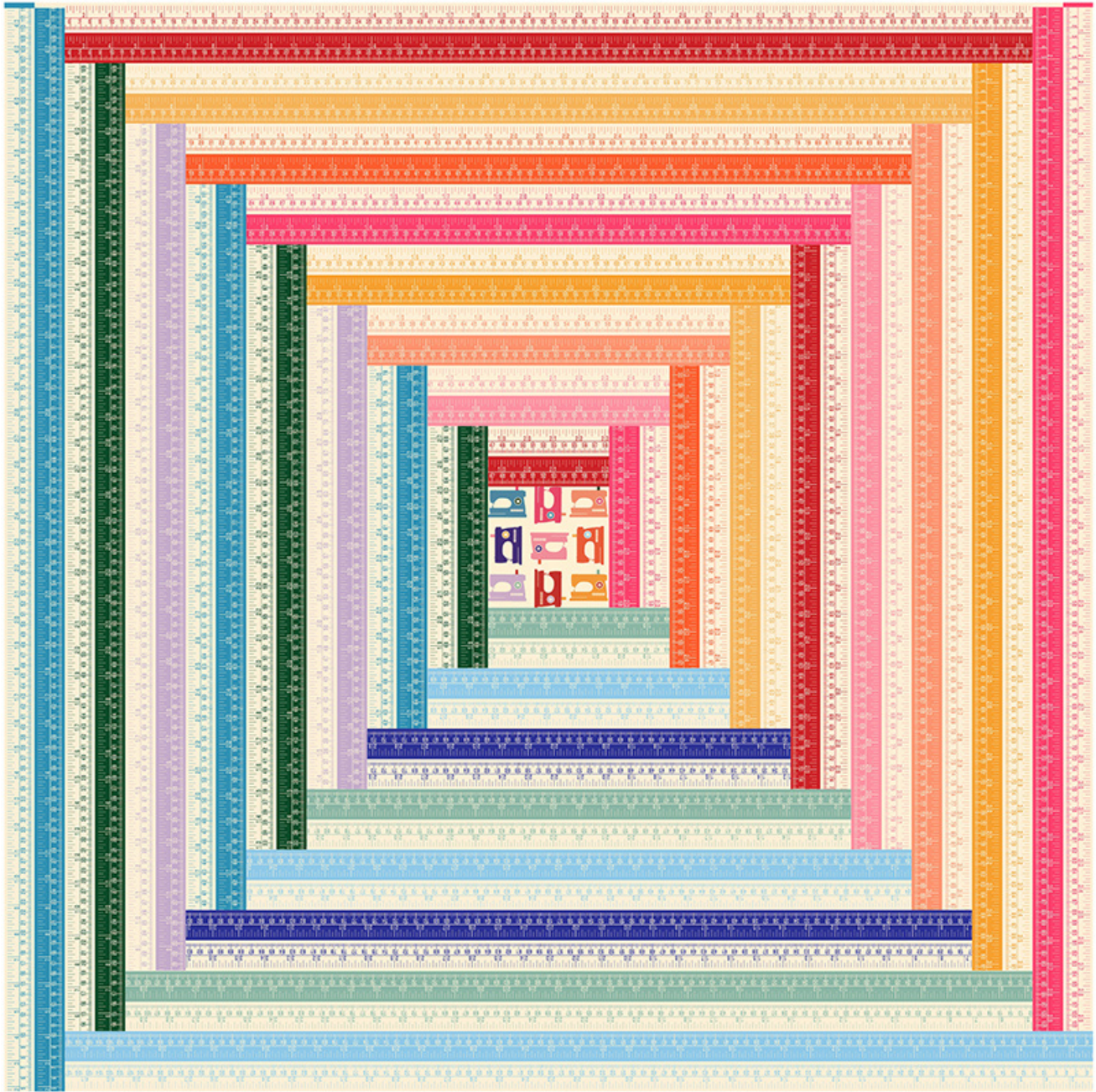


# SEWING MOOD

A Quilt Pattern by

TESSA RAE WILLIAMS for  pbs fabrics™

Featuring Sewing Mood by Hoodie Crescent



Finished size: 42" x 42"

@tessaraewilliams

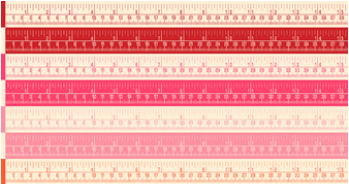
@hoodiescescent

@pbsfabrics

#sewingmoodquilt

# FABRIC REQUIREMENTS

WOF = Width of Fabric



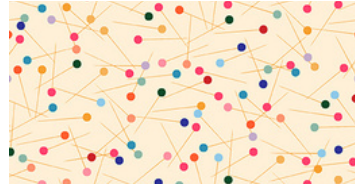
120-21711  
6 yards

Cut (3) WOF  
strips of each  
ruler color



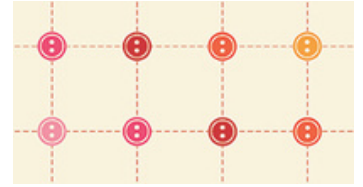
120-21709  
Fat Eighth

Cut (1) 5 1/4" square  
(Fussy cut desired  
motif)



Binding  
120-21725  
1/3 yard

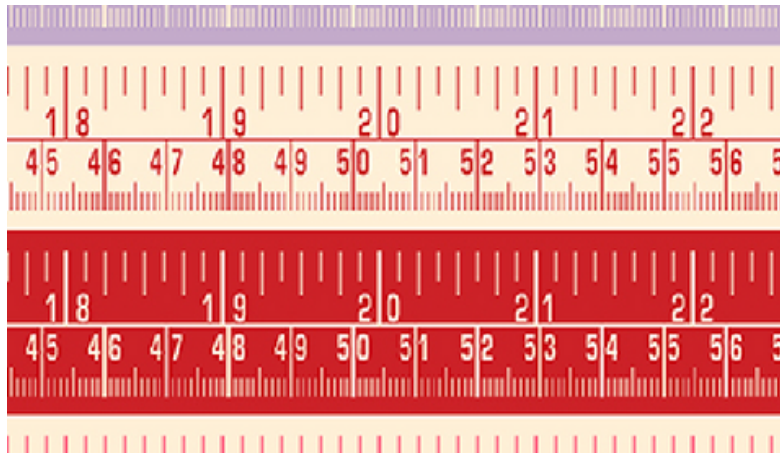
Cut (5)  
2 1/4" x WOF strips



Backing  
120-21721  
1 1/3 yards

# CUTTING RULERS

Each strip consists of two rulers, a cream ruler and a colored ruler. Cut 1/4 inch above the cream ruler, and 1/4 inch below the colored ruler.



Note: If you'd rather, you may cut directly on the line between colors. The edges of each ruler will be taken by seam allowance, but it is less wasteful. Only 3 yards of 120-21711 is needed for this construction

Arrange strips into two groups, warm and cool.

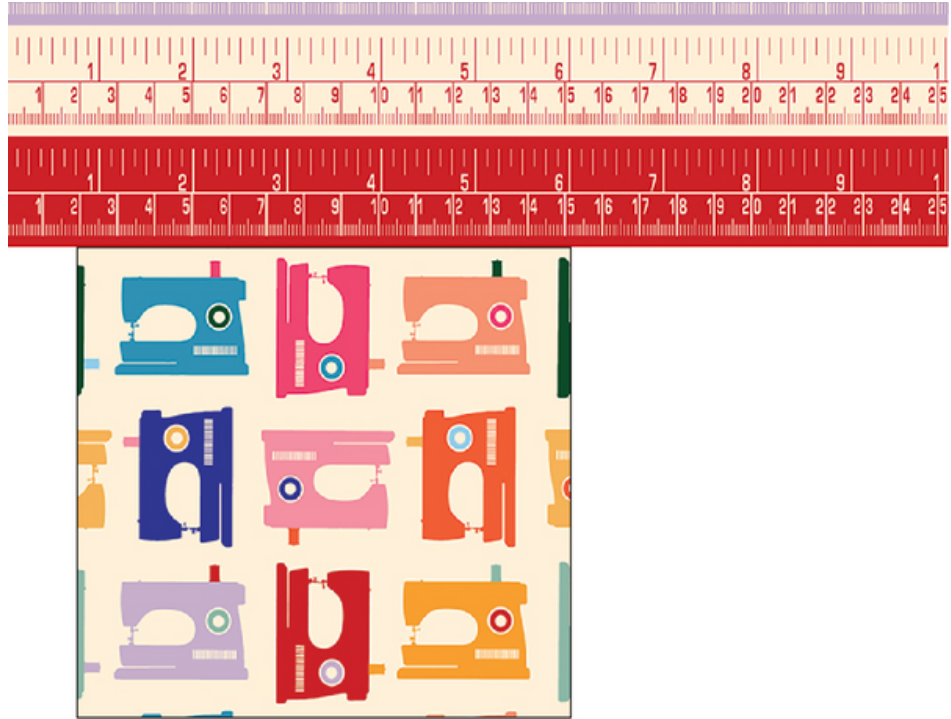
Warm - Red, pink, light pink, orange, coral, gold, yellow-orange

Cool - Sage green, dark green, light blue, cyan, blue, lavender

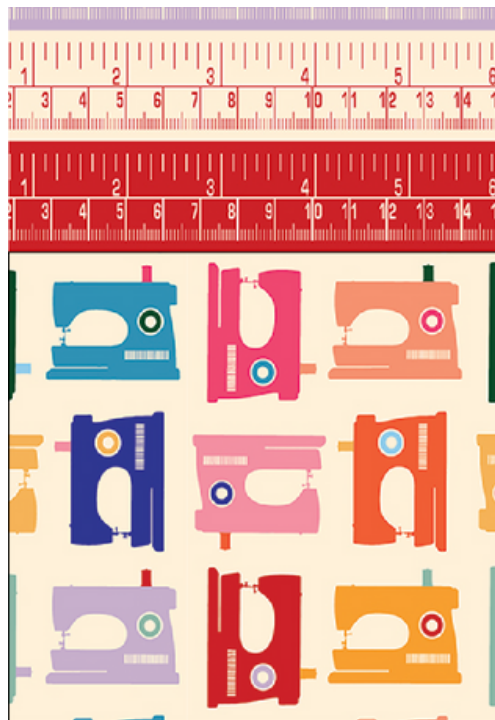


# PIECING

1. Starting with a red strip, sew to the center square. Make sure the colored ruler is on the bottom, and the cream ruler is on the top.



2. Trim excess strip and press seam away from center.



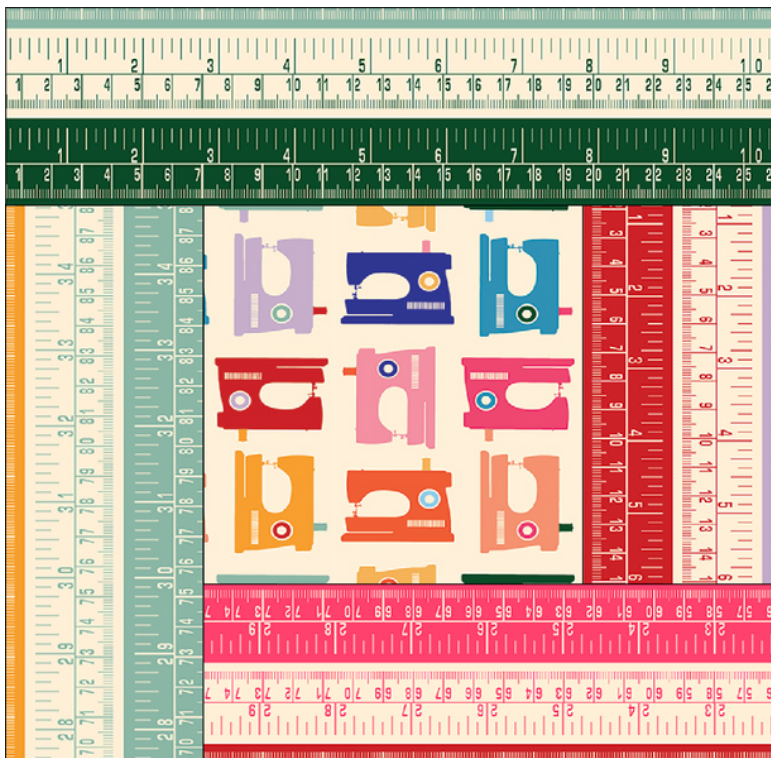
3. Rotate block 90 degrees. Sew a pink strip, again making sure the colored ruler is on the bottom and the cream ruler is on top. Trim the excess strip, and press away from the center.



4. Rotate block 90 degrees. Sew a sage green strip, trim excess, and press away from center.



5. Repeat with a dark green strip.



6. Continue to rotate, sew, trim, and press with the following colors:

Round 2: Light pink, orange, light blue, cyan

Round 3: Coral, gold, blue, lavender

Round 4: Yellow-orange, red, sage green, dark green

Round 5: Pink, light pink, light blue, cyan

Round 6: Orange, coral, blue, lavender

Round 7: Gold, yellow-orange, sage green, dark green


Round 8: Red, pink, light blue, cyan

7. Baste the quilt top, batting, and backing fabric together to make a quilt sandwich.

8. Quilt as desired.

9. Bind using your preferred binding method.

# KIT REQUIREMENTS

	1 Kit	5 Kits	10 Kits
 Fabric A 120-21711	6 yards	12 yards	24 yards
 Fabric B 120-21709	Fat Eighth	Half yard	3/4 yard
 Binding 120-21725	1/3 yard	1 2/3 yards	3 1/3 yards

Note: To use less fabric for the ruler strips (120-21711), cut on the line between ruler colors. The seam allowance will take the edges of each ruler, but will be much less wasteful. Only 3 yards of 120-21711 is needed for this construction.