

INDIGO MEDALLION

A Quilt Pattern by

TESSA RAE WILLIAMS for  pbs fabrics™

Featuring Lula Blue by Erin Borja



Finished size: 40" x 40"

@tessaraewilliams

@erinborjadesign

@pbsfabrics

#indigomedallion

FABRIC REQUIREMENTS

Note: Difference is notated between fat quarter and 1/4 yard.

Fat quarter = 18" x 22". 1/4 yard = 9" x WOF.



Fabric A
120-21770
Fat Quarter



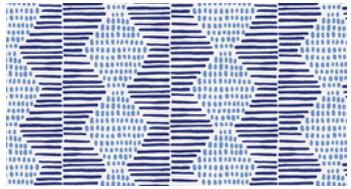
Fabric B
121-037
1/2 yard



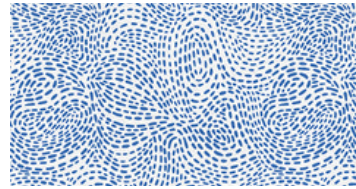
Fabric C
120-21777
5/8 yard



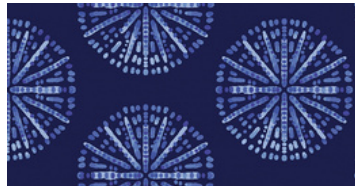
Fabric D
120-21773
Fat Quarter



Fabric E
120-21775
1/2 yard



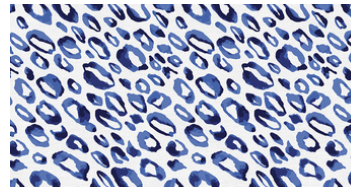
Fabric F
120-21779
3/8 yard



Fabric G
120-21774
Fat Quarter



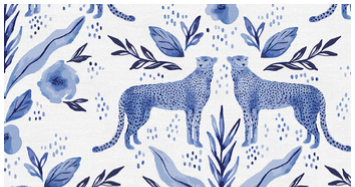
Fabric H
121-001
1/4 yard



Fabric I
120-21772
3/8 yard



Binding
120-21771
1/2 yard



Backing
120-21770
1 1/4 yard

CUTTING DIRECTIONS

Note: Difference is notated between fat quarter and 1/4 yard.

Fat quarter = 18" x 22". 1/4 yard = 9" x WOF.



Fabric A
(1) 12 1/2" square
(Fussy cut
desired motif)



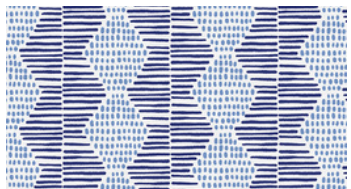
Fabric B
(5) 2 1/2" x WOF
strips
• Subcut one strip
into (8) 2 1/2"
squares
• Set four strips
aside for strip
piecing



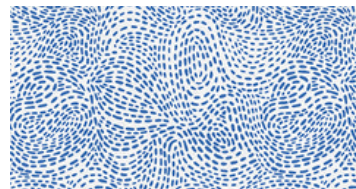
Fabric C
(7) 2 1/2" x WOF
strips
• Subcut three
strips into (40)
2 1/2" strips
• Set four strips
aside for strip
piecing



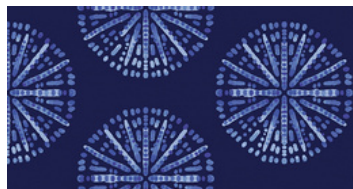
Fabric D
(4) 4 1/2" squares
(Fussy cut
desired motif)



Fabric E
(4) 4 1/2" x 12 1/2"
(Fussy cut
desired motif)



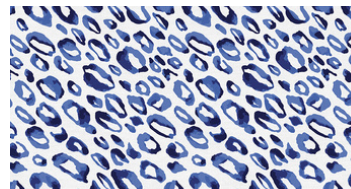
Fabric F
(16) 4 1/2" squares



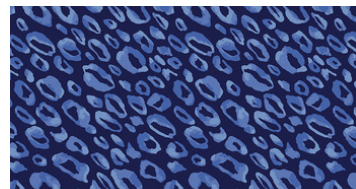
Fabric G
(4) 4 1/2" squares
(Fussy cut desired
motif)



Fabric H
(32) 2 1/2" squares



Fabric I
(4) 2 1/2" x WOF
strips



Binding
(5) 2 1/4" x WOF
strips

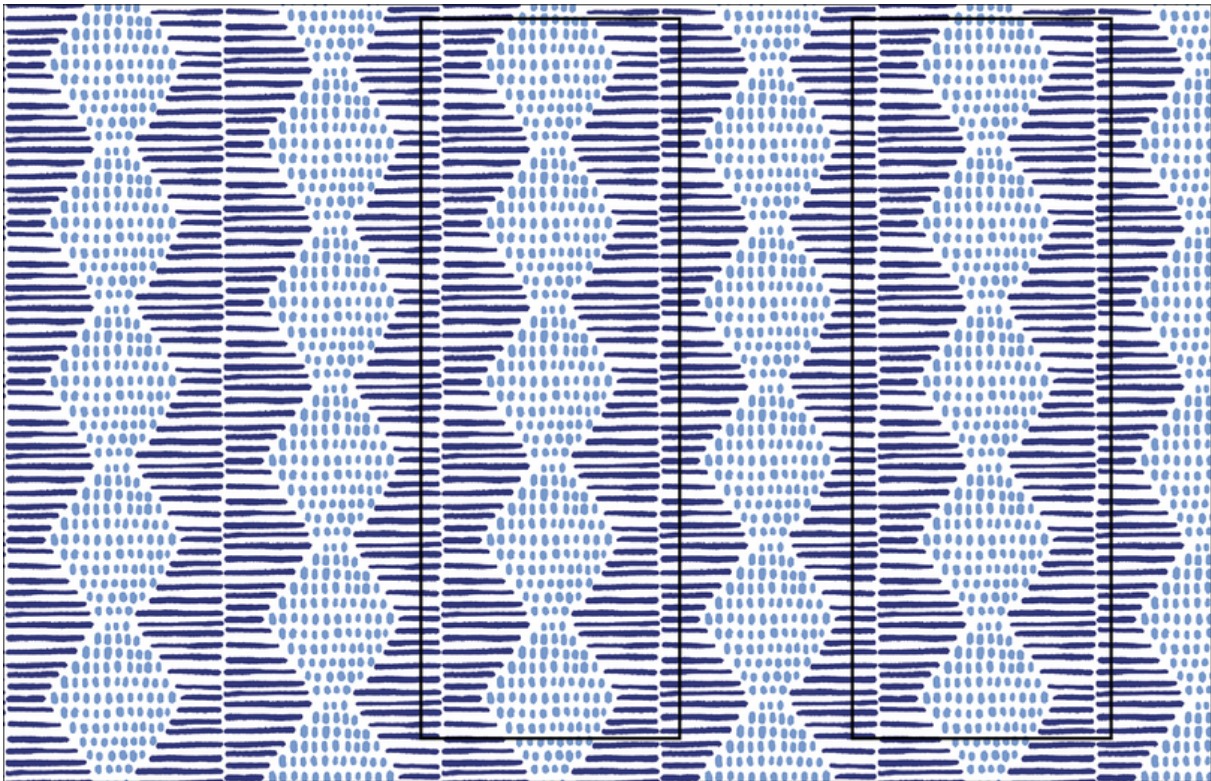
CUTTING DIRECTIONS

Certain blocks in this quilt require you to fussy cut the fabrics from the Lula Blue collection. This means you are cutting a particular motif in the fabric while cutting the particular sized piece.

Fabric A (12 ½" square): Find the vertical center between the two cheetahs. Measure 6 ¼" to one side from this point, cut. Measure 12 ½" to other side. Repeat for horizontal center.

Fabric D (4 ½" squares): Center a flower in each square.

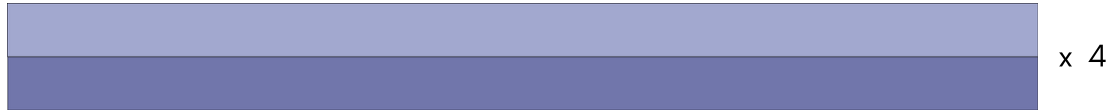
Fabric E (4 ½" x 12 ½"): Center the light blue stripes when cutting.



Fabric G (4 ½" squares): Center a circle motif in each square.

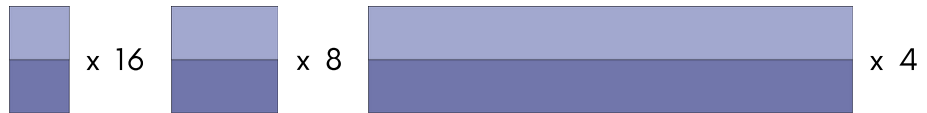
STRIP PIECING

1. Sew one 2 ½" x WOF strip of Fabric B to one 2 ½" x WOF strip of Fabric C. Repeat to make four strip sets. Press seam allowance to dark side.

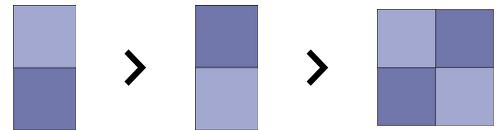


2. Subcut these strip sets into the following widths:

- (16) 2 ½"
- (8) 4 ½"
- (4) 20 ½"



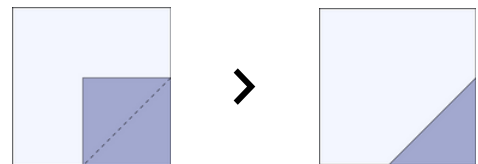
3. Take (2) 2 ½" sections, and flip one upside down. Sew together to make a 4-patch block. Repeat to make eight 4-patch blocks.



BLOCK CONSTRUCTION

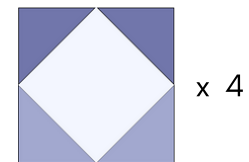
4. Draw a diagonal line on the back of all 2 ½" squares.

5. Sew one 2 ½" Fabric B square to a bottom corner of a 4 ½" Fabric D square, sewing on the drawn line. Trim excess seam allowance, and press open.



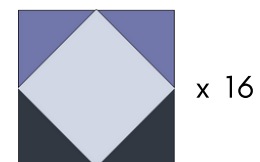
6. Sew another 2 ½" Fabric B square to the other bottom corner.

7. Repeat steps 5-6 with (2) 2 ½" Fabric C squares on the two top corners.



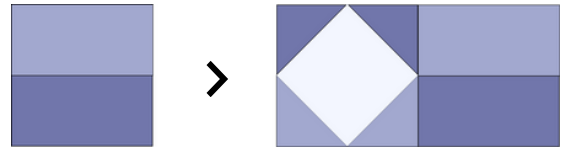
8. Repeat to make 4 **BCD diamond blocks**.

9. Repeat steps 5-7 using (16) 4 ½" Fabric F squares, (32) 2 ½" Fabric C squares, and (32) 2 ½" Fabric H squares. Make 16 **CHF diamond blocks**.

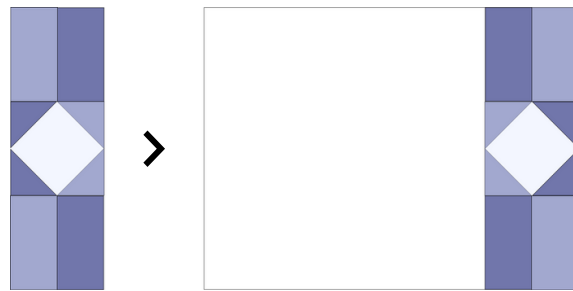


ROUND ONE

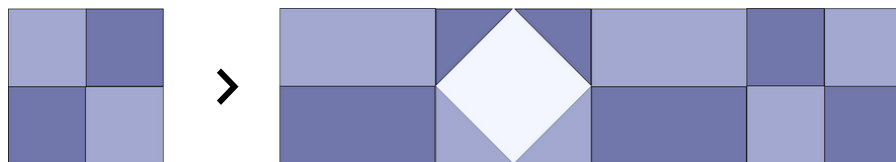
10. Sew a 4 ½" strip set to either side of each **BCD** diamond block, following the diagram for color placement.



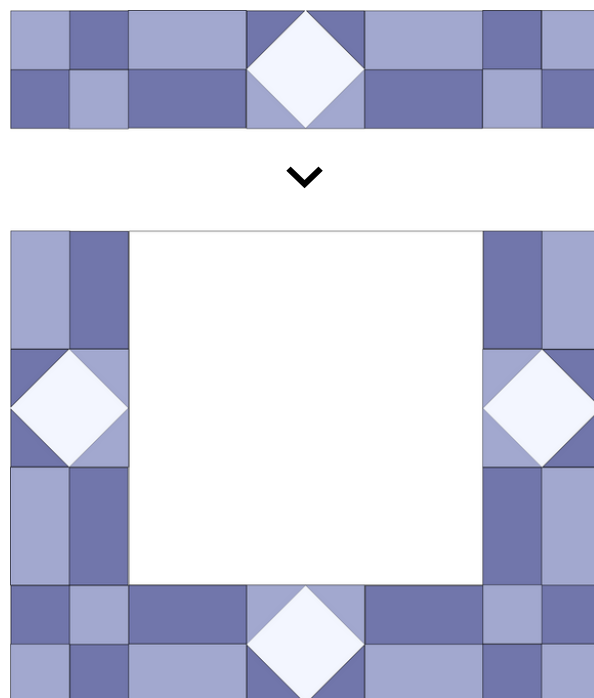
11. Sew two of these sets to the left and right sides of the 12 ½" Fabric A square.



12. For the remaining two sets, sew a 4-patch block on either side, making sure to alternate fabrics.



13. Sew these two sets to the top and bottom.

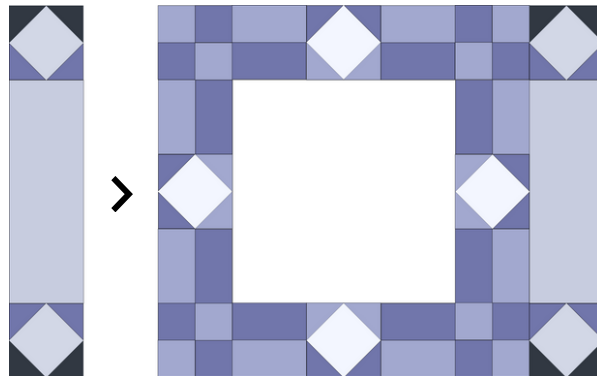


ROUND TWO

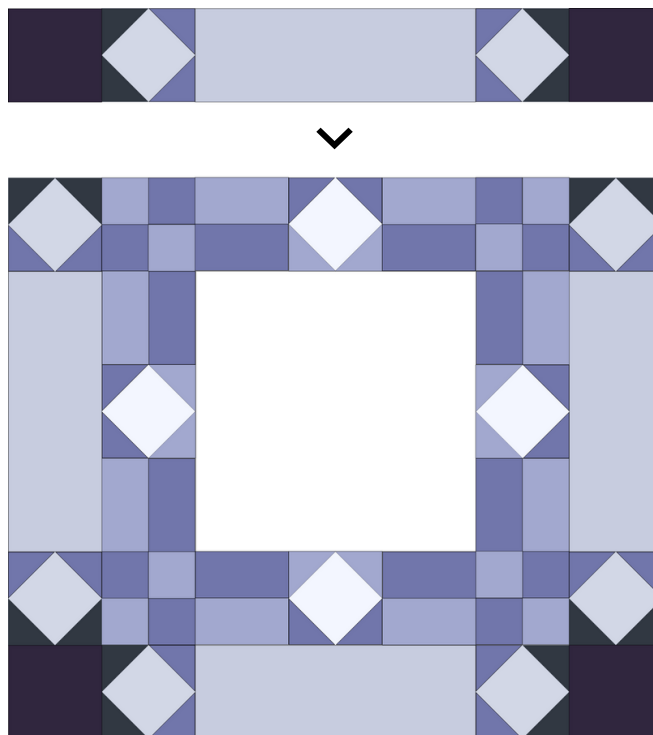
14. Sew a **CHF** diamond block to either end of a Fabric E rectangle. Make sure the Fabric H triangles are on the outer edges. Repeat to make 4 block strips.



15. Sew two of these block strips to the left and right sides of Round One.



16. Sew a Fabric G square to either end of the two remaining block strips. Sew to the top and bottom of Round 1.

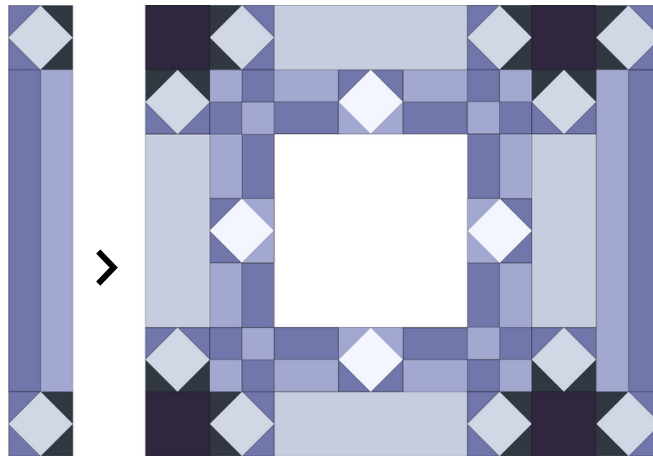


ROUND THREE

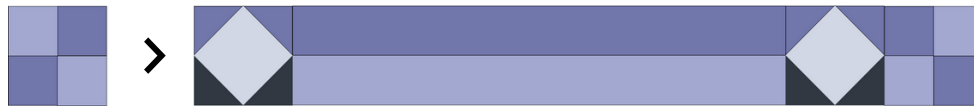
7. Sew a **CHF** diamond block to either end of a 20 1/2" strip set. See diagram for fabric placement. Repeat to make 4 block strips.



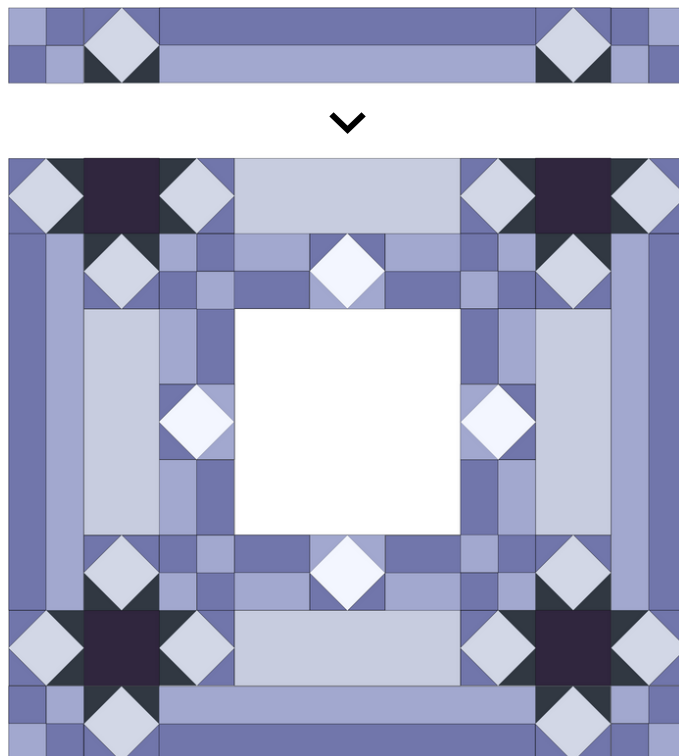
18. Sew two block strips to the left and right sides of Round Two.



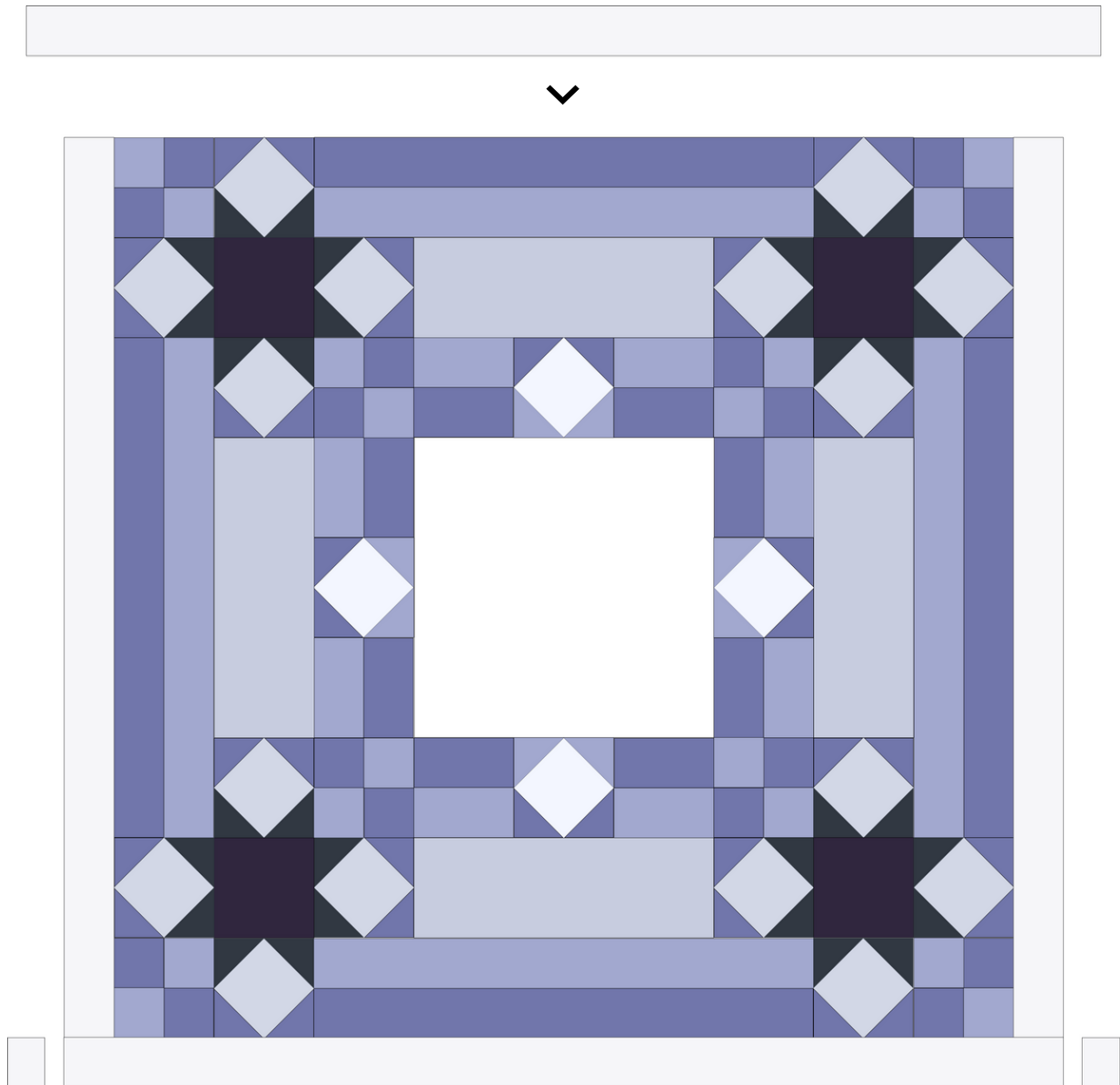
19. Sew a 4-patch block to either end of the two remaining block strips. Make sure to match Fabric C pieces as shown.



20. Sew the two remaining block strips to the top and bottom of Round 3.



21. Sew two strips of Fabric I to the left and right sides of Round Three. Trim off excess fabric. Repeat on the top and bottom.

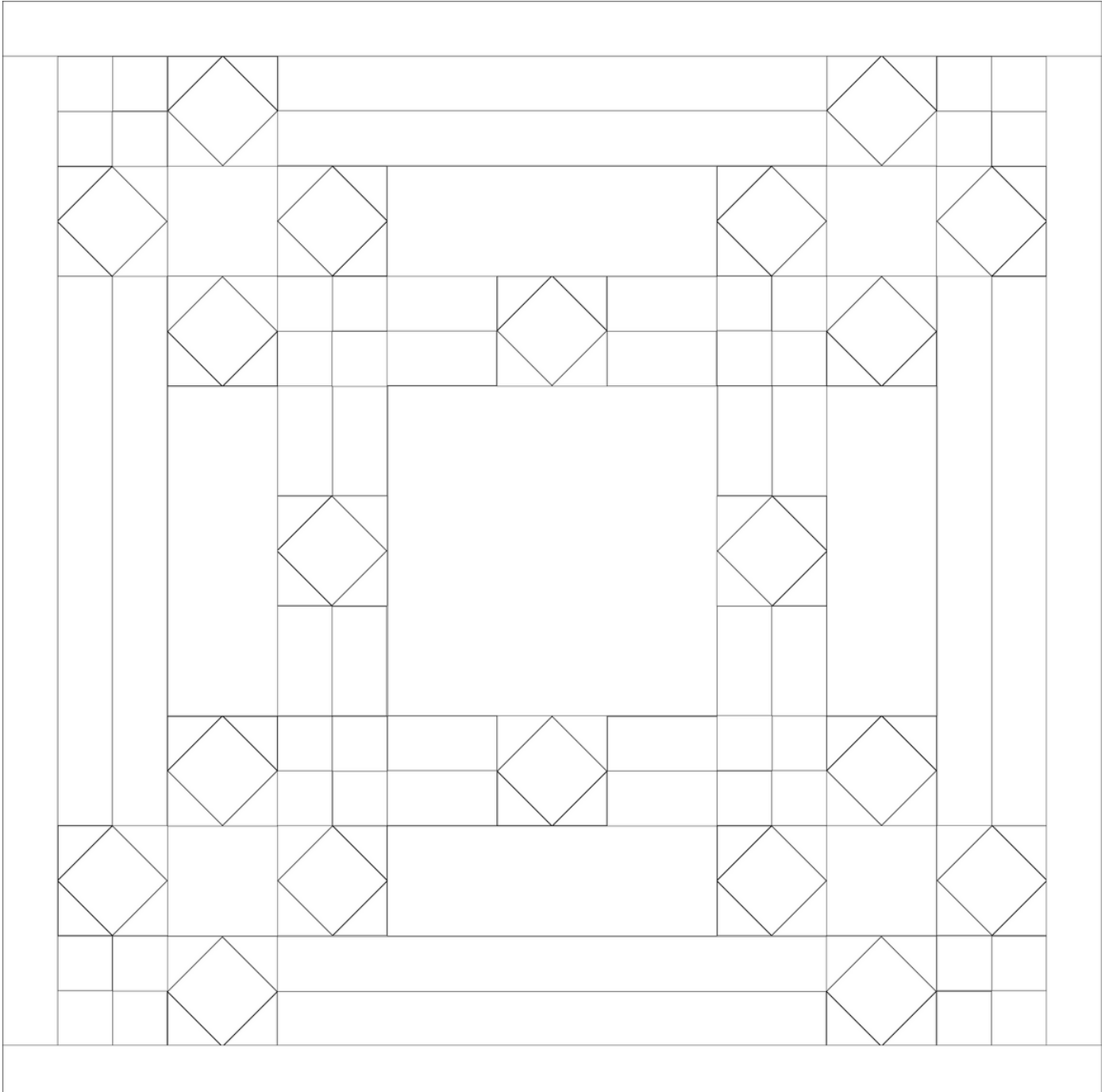


22. Baste the quilt top, batting, and backing fabric together to make a quilt sandwich.

23. Quilt as desired.

24. Bind using your preferred binding method.


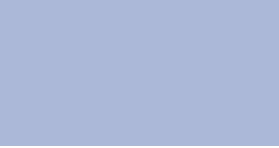


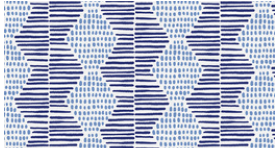
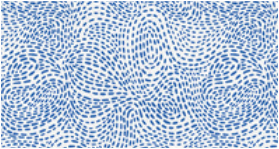
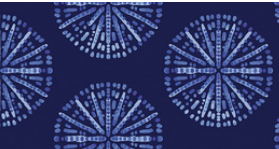

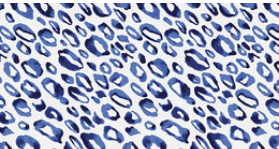
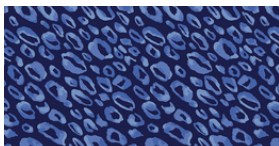
COLORING PAGE



KIT REQUIREMENTS

Note: Difference is notated between fat quarter and 1/4 yard.

Fat quarter = 18" x 22". 1/4 yard = 9" x WOF.

		1 Kit	5 Kits	10 Kits
	Fabric A 120-21770	Fat Quarter	1 ½ yards	2 ½ yards
	Fabric B 121-037	½ yard	2 ½ yards	5 yards
	Fabric C 120-21777	5/8 yard	3 1/8 yards	6 1/4 yards
	Fabric D 120-21773	Fat Quarter	1 ½ yards	2 ½ yards
	Fabric E 120-21775	½ yard	2 ½ yards	5 yards
	Fabric F 120-21779	3/8 yard	1 7/8 yards	3 3/4 yards
	Fabric G 120-21774	Fat Quarter	1 ½ yards	2 ½ yards
	Fabric H 121-001	1/4 yard	1 1/4 yards	2 ½ yards
	Fabric I 120-21772	3/8 yard	1 7/8 yards	3 3/4 yards
	Binding 120-21771 1/3 yard	½ yard	2 ½ yards	5 yards