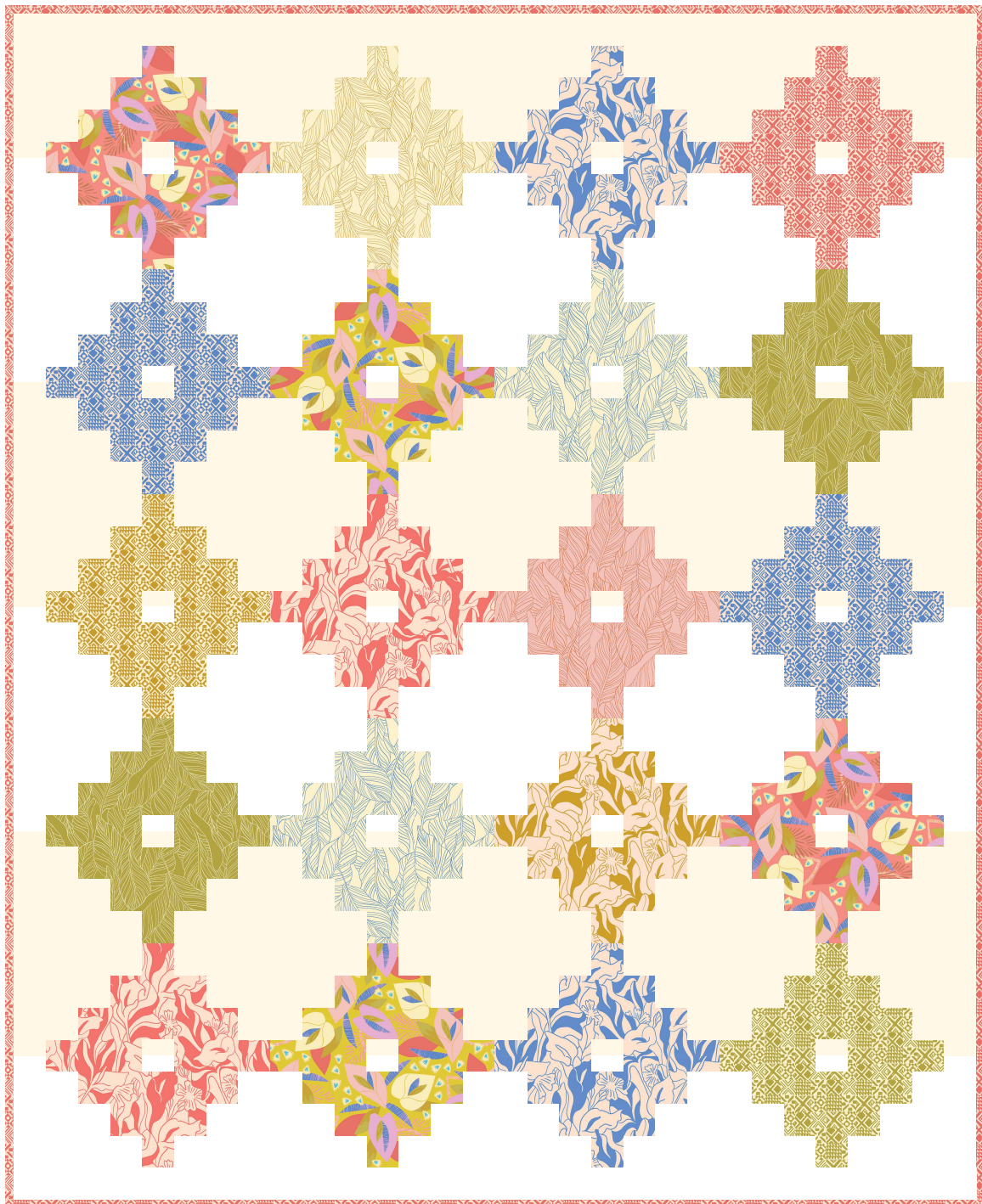


# Lisbon Love— Big Blooms

Featuring fabrics from the Lisbon Love collection by Kasey Free



60" x 74"

Quilt designed by Lisa Swenson Ruble



901 E. 14th Avenue  
North Kansas City, MO 64116  
(816) 421-2000  
[www.pbsfabrics.com](http://www.pbsfabrics.com)

**Finished Quilt Size:** 60" x 74"  
**Finished Block Size:** 14" square  
**Number of Blocks:** 20

## Yardages and Cutting

*WOF means width of fabric from selvage to selvage. Remove as little fabric as possible when trimming selvage edges.*

**Fat eighth Pink Leaf, 120-21360**

**Fat eighth Gold Leaf, 120-21363**

**Fat eighth Green Tile, 120-21365**

**Fat eighth Gold Tile, 120-21367**

**Fat eighth Gold Petal, 120-21371**

From each fabric, cut:

- 3 strips 2-1/2" x 21"; cut into (2) 2-1/2" x 10-1/2" pieces, (4) 2-1/2" x 6-1/2" pieces, and (2) 2-1/2" squares

**Fat quarter Gold Floral, 120-21358**

**Fat quarter Pink Floral, 120-21359**

**Fat quarter Green Leaf, 120-21361**

**Fat quarter Blue Leaf, 120-21362**

**Fat quarter Blue Tile, 120-21366**

**Fat quarter Pink Petal, 120-21368**

**Fat quarter Blue Petal, 120-21370**

From each fabric, cut:

- 6 strips 2-1/2" x 21"; cut into (4) 2-1/2" x 10-1/2" pieces, (8) 2-1/2" x 6-1/2" pieces, and (4) 2-1/2" squares

**1 yard Pink Tile, 120-21264**

- 2 strips 2-1/2" x WOF; cut into (2) 2-1/2" x 10-1/2" pieces, (4) 2-1/2" x 6-1/2" pieces, and (2) 2-1/2" squares
- 8 strips 2-1/4" x WOF for binding

**1-1/2 yards Painter's Palette Solid White, 121-000**

**1-1/2 yards Painter's Palette Solid Honeycomb, 121-014**

From each fabric, cut:

- 17 strips 2-1/2" x WOF; cut into (4) 2-1/2" x 14-1/2" pieces, (2) 2-1/2" x 7-1/2" pieces, (40) 2-1/2" x 6-1/2" pieces, (40) 2-1/2" x 4-1/2" pieces, (40) 2-1/2" squares and (20) 1-1/2" x 2-1/2" pieces. Reserve (2) strips for borders

**4 yards backing fabric of choice**

- 2 pieces 68" x WOF

**Batting**

- 1 piece 68" x 82"

## Piecing the Blocks

*Use a 1/4" seam allowance for all stitching. Press all seams away from white pieces in blocks.*

1. Sort cut print pieces into piles. Each pile should contain (2) 2-1/2" x 10-1/2" pieces, (4) 2-1/2" x 6-1/2" pieces, and (2) 2-1/2" squares, all from the same print.
2. Sew (1) 2-1/2" print square between (1) 2-1/2" x 6-1/2" White piece and (1) 2-1/2" x 6-1/2" Honeycomb piece. Make (2).



3. Sew (1) 2-1/2" x 6-1/2" print piece between (1) 2-1/2" x 4-1/2" White piece and (1) 2-1/2" x 4-1/2" Honeycomb piece. Make (2).



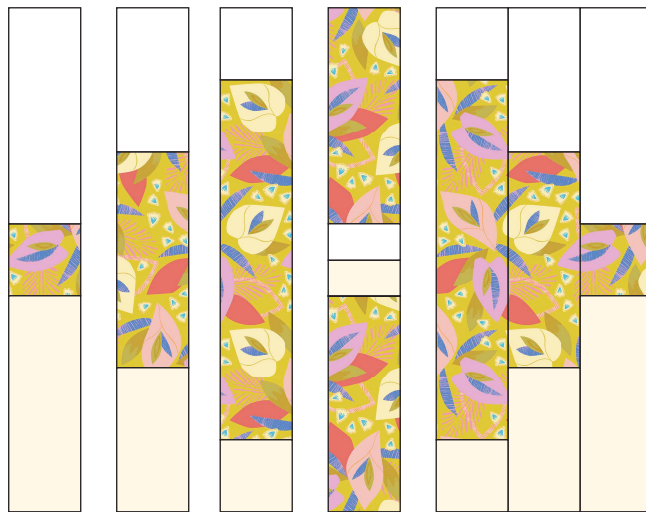
4. Sew (1) 2-1/2" x 10-1/2" print piece between (1) 2-1/2" White square and (1) 2-1/2" Honeycomb square. Make (2).



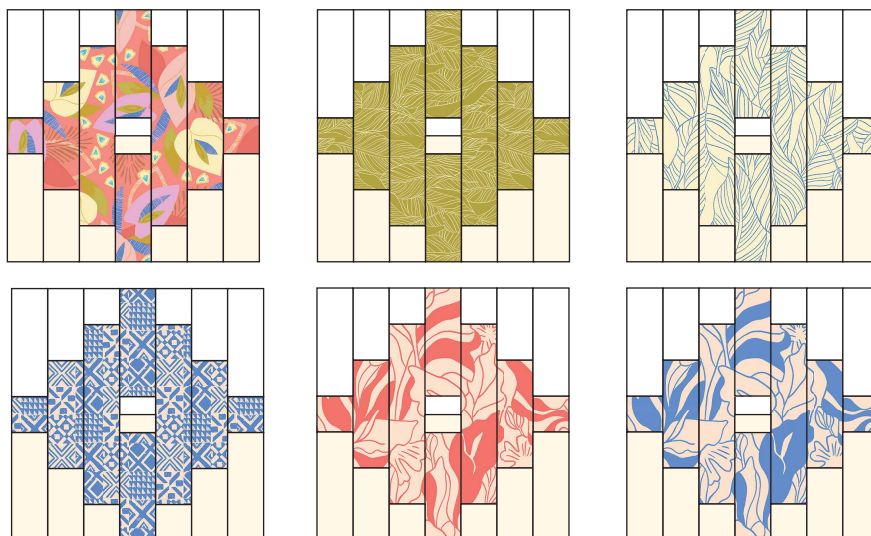
5. Sew (1) 1-1/2" x 2-1/2" White piece to (1) 1-1/2" x 2-1/2" Honeycomb piece. Sew this unit between (2) 2-1/2" x 6-1/2" print pieces. Make (2).



6. Lay out the pieced units from steps 2-5 as shown. Sew the pieced units together to complete a 14-1/2" square block.

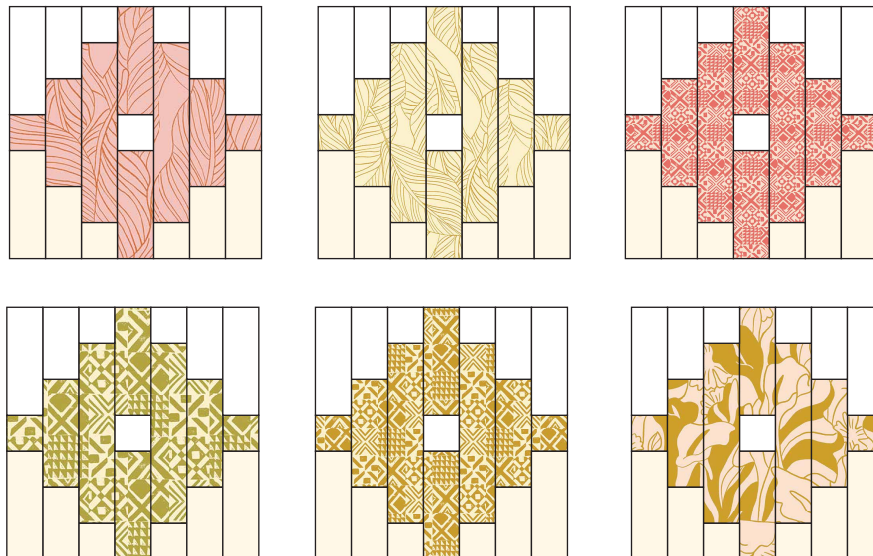


7. In the same way, make (2) blocks each using the fabrics shown above and below.





8. In the same way, make (1) block each using the fabrics shown below.



## Completing the Quilt

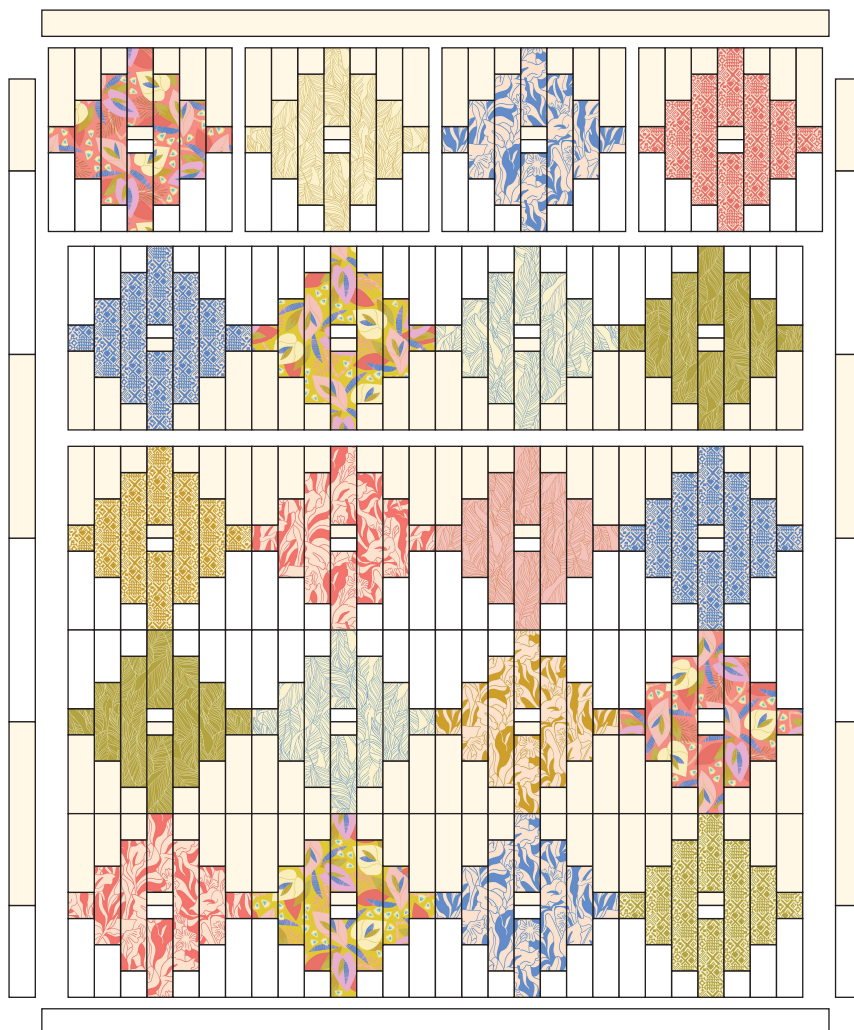
1. Referring to the Quilt Assembly Diagram, lay out the blocks into (5) rows of (4) blocks each. Sew the blocks into rows and join the rows to complete the quilt center.

2. To make the side pieced borders, sew together (2) each 2-1/2" x 14-1/2" White and Honeycomb pieces and (1) each 2-1/2" x 7-1/2" White and Honeycomb pieces as shown. Make (2). Aligning the White and Honeycomb sections as shown, sew to the sides of the quilt center.

3. Sew the (2) 2-1/2" x WOF Honeycomb strips short ends together into a long strip. Measure the quilt lengthwise across the center and cut (1) strip to that length. Sew to the top of the quilt. Repeat with the (2) 2-1/2" x WOF White strips to make and add the bottom border.

4. Remove the selvedge edges from the backing pieces. Join the pieces on the long edges with a 1/2" seam allowance. Press seam open. Trim to make a 68" x 82" backing piece.

5. Layer, baste and quilt. Use the (8) 2-1/4" x WOF Pink Tile strips to bind the quilt.



**Quilt Assembly Diagram**

# Lisbon Love — Big Blooms

1 kit                      5 kits                      10 kits  
**120-21360**                      **Pink Leaf**  
**Fat eighth**                      **5/8 yard**                      **1-1/4 yards**



**120-21363**                      **Gold Leaf**  
**Fat eighth**                      **5/8 yard**                      **1-1/4 yards**



**120-21365**                      **Green Tile**  
**Fat eighth**                      **5/8 yard**                      **1-1/4 yards**



**120-21367**                      **Gold Tile**  
**Fat eighth**                      **5/8 yard**                      **1-1/4 yards**



**120-21371**                      **Gold Petal**  
**Fat eighth**                      **5/8 yard**                      **1-1/4 yards**



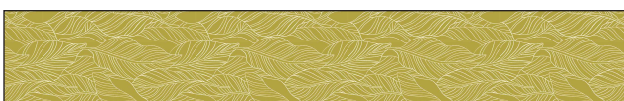
**120-21358**                      **Gold Floral**  
**Fat quarter**                      **1-1/4 yards**                      **2-1/2 yards**



**120-21359**                      **Pink Floral**  
**Fat quarter**                      **1-1/4 yards**                      **2-1/2 yards**



**120-21361**                      **Green Leaf**  
**Fat quarter**                      **1-1/4 yards**                      **2-1/2 yards**



1 kit                      5 kits                      10 kits  
**120-21362**                      **Blue Leaf**  
**Fat quarter**                      **1-1/4 yards**                      **2-1/2 yards**



**120-21366**                      **Blue Tile**  
**Fat quarter**                      **1-1/4 yards**                      **2-1/2 yards**



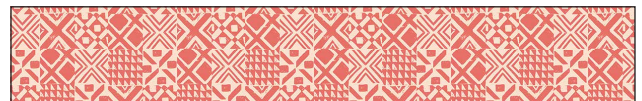
**120-21368**                      **Pink Petal**  
**Fat quarter**                      **1-1/4 yards**                      **2-1/2 yards**



**120-21370**                      **Blue Petal**  
**Fat quarter**                      **1-1/4 yards**                      **2-1/2 yards**



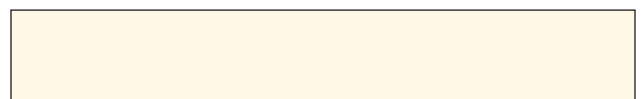
**120-21364**                      **Pink Tile**  
**1 yard**                      **5 yards**                      **10 yards**



**121-000**                      **Painter's Palette Solid White**  
**1-1/2 yards**                      **7-1/2 yards**                      **15 yards**



**121-014** **Painter's Palette Solid Honeycomb**  
**1-1/2 yards**                      **7-1/2 yards**                      **15 yards**



**Backing of Choice**  
**4 yards**                      **20 yards**                      **40 yards**