

Hats for Cats — Cat's Meow

Featuring fabrics from the Hats for Cats collection



52" x 66"

Quilt designed by Lisa Swenson Ruble



901 E. 14th Avenue
North Kansas City, MO 64116
(816) 421-2000
www.pbsfabrics.com

Finished Quilt Size: 52" x 66"
Finished Block Size: 8" square
Number of Blocks: 8

Yardages and Cutting

WOF means width of fabric from selvage to selvage. Remove as little fabric as possible when trimming selvage edges.

1/3 yard Cat Life print, 120-208001

- 1 strip 6-1/2" x WOF; trim to (1) 6-1/2" x 38-1/2" strip

1/3 yard Brown Paws, 120-208401

1/3 yard Tan Knit, 120-208601

From each fabric, cut:

- 1 strip 4-1/2" x WOF; cut into (4) 4-1/2" x 8-1/2" pieces
- 1 strip 2-3/4" x WOF; cut into (4) 2-3/4" x 4" pieces and (8) 2-1/4" squares

3/4 yard Cats in Hats, 120-208101

- 2 strips 10-1/2" x WOF; trim to (2) 10-1/2" x 38-1/2" strips

1-1/8 yards Green/Brown Ovals, 120-208701

- 7 strips 2-1/4" x WOF for binding
- 9 strips 1-1/2" x WOF; trim (4) strips to (4) 1-1/2" x 38-1/2" strips. Reserve remaining (5) strips for border

1/8 yard Painter's Palette Solid Blush, 121-119

- 2 strips 1-1/2" x WOF; trim to (2) 1-1/2" x 38-1/2" strips

2-1/8 yards Painter's Palette Solid White, 121-000

- 1 strip 5" x WOF; cut into (8) 5" x 4-1/2" pieces
- 6 strips 4-1/2" x WOF for border
- 7 strips 2-1/2" x WOF; cut 2 strips into (6) 2-1/2" x 8-1/2" pieces. Reserve remaining strips for border
- 1 strip 2-1/4" x WOF; cut into (8) 2-1/4" x 4" pieces
- 5 strips 1-1/2" x WOF; cut 1 strip into (8) 1-1/2" squares and trim remaining (4) strips to 1-1/2" x 38-1/2"

4-1/4 yards backing fabric of choice

- 2 pieces 74" x WOF

Batting

- 1 piece 60" x 74"

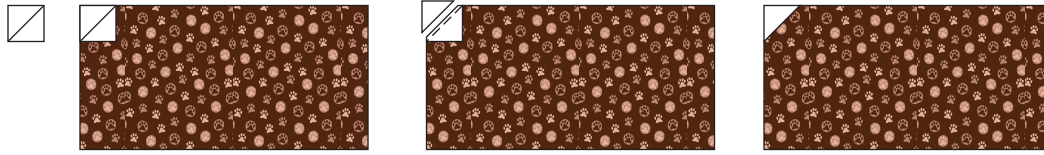
Piecing the Blocks

Use a 1/4" seam allowance for all stitching.

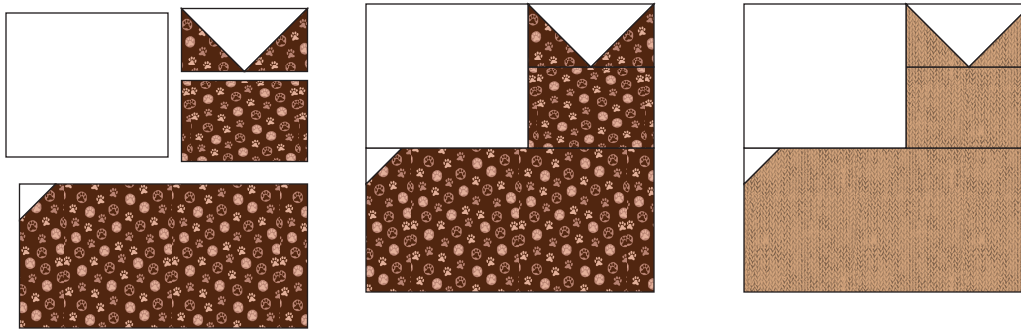
1. Draw a diagonal line on the wrong side of (2) 2-1/4" Brown Paws squares. Position a square right sides together on (1) end of a 2-1/4" x 4" White piece. Sew on the drawn line, trim seam allowance to 1/4", and press open. Repeat on the opposite end to make a 2-1/4" x 4" flying geese unit for cat ears.



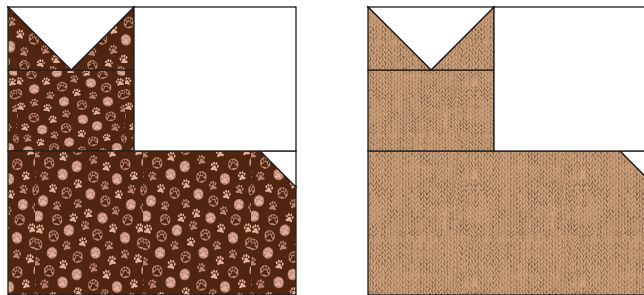
2. Draw a diagonal line on the wrong side of (1) 1-1/2" White square. Position on the upper left corner of (1) 8-1/2" x 4-1/2" Brown Paws piece. Sew on the line, trim seam allowance to 1/4" and press open to make a cat body.



3. Sew the cat ears to (1) 4" x 2-3/4" Brown Paws piece to make a cat head. Sew (1) 5" x 4-1/2" White piece to the left side. Sew the cat body to the bottom to make an 8-1/2" square Brown Paws cat block. Make (2). In the same way, make (2) Tan Knit cat blocks.

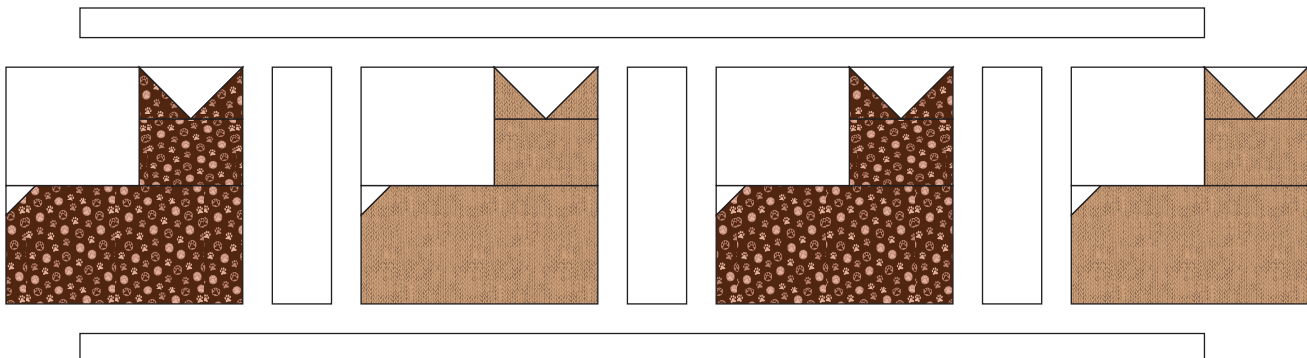


4. In the same way, make (2) each Brown Paws and Tan Knit cat blocks in reverse.



Completing the Quilt

1. Lay out (2) Brown Paw and (2) Tan Knit cat blocks alternating with (3) 2-1/2" x 8-1/2" White pieces. Sew into a row. Sew 1-1/2" x 38-1/2" White strips to the top and bottom. Make a second row using the cat blocks in reverse as shown in the Quilt Assembly Diagram.



2. Referring to the Quilt Assembly Diagram for order, lay out (2) cat rows, (2) 10-1/2" x 38-1/2" Cats in Hats strips, (2) 1-1/2" x 38-1/2" Blush strips, (4) 1-1/2" x 38-1/2" Green/Brown Ovals strips, and (1) 6-1/2" x 38-1/2" Cat Life strip. Sew the rows together to complete the quilt center.

3. Sew the (5) 2-1/2" x WOF White strips short ends together into a long strip. Measure the quilt lengthwise along the center and cut (2) strips to that length. Sew to the sides of the quilt. Measure the quilt widthwise across the center and cut (2) strips to that length. Sew to the top and bottom of the quilt.

4. Sew the (5) 1-1/2" x WOF Green/Brown Ovals strips short ends together into a long strip and add the second border in the same manner.

5. Sew the (6) 4-1/2" x WOF White strips short ends together into a long strip and add the outer border in the same manner.

6. Remove the selvedge edges from the backing pieces. Join the pieces on the long edges with a 1/2" seam allowance. Press seam open. Trim to make a 60" x 74" backing piece.

7. Layer, baste and quilt. Use the (7) 2-1/4" x WOF Green/Brown Ovals strips to bind the quilt.



Quilt Assembly Diagram

Hats for Cats — Cat's Meow

1 kit 5 kits 10 kits

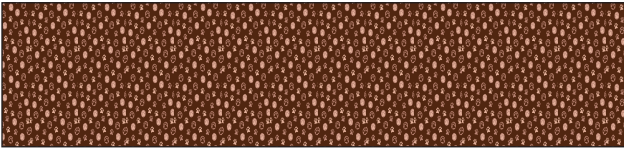
120-208001 Cat Life

1-1/8 yards 5-5/8 yards 11-1/4 yards



120-208401 Brown Paws

1/3 yard 1-2/3 yards 3-1/3 yards



120-208601 Tan Knit

1/3 yard 1-2/3 yards 3-1/3 yards



120-208101 Cats in Hats

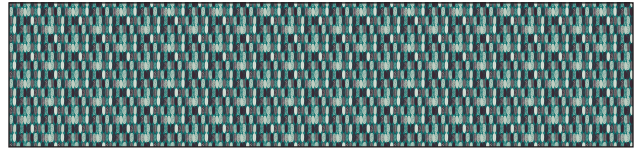
3/4 yard 3-3/4 yards 7-1/2 yards



1 kit 5 kits 10 kits

120-208701 Green/Brown Ovals

1-1/8 yards 5-5/8 yards 11-1/4 yards



121-119 Painter's Palette Solid Blush

1/8 yard 5/8 yard 1-1/4 yards



121-000 Painter's Palette Solid White

2-1/8 yards 10-5/8 yards 21-1/4 yards



Backing of Choice

4-1/4 yards 21-1/4 yards 42-1/2 yards