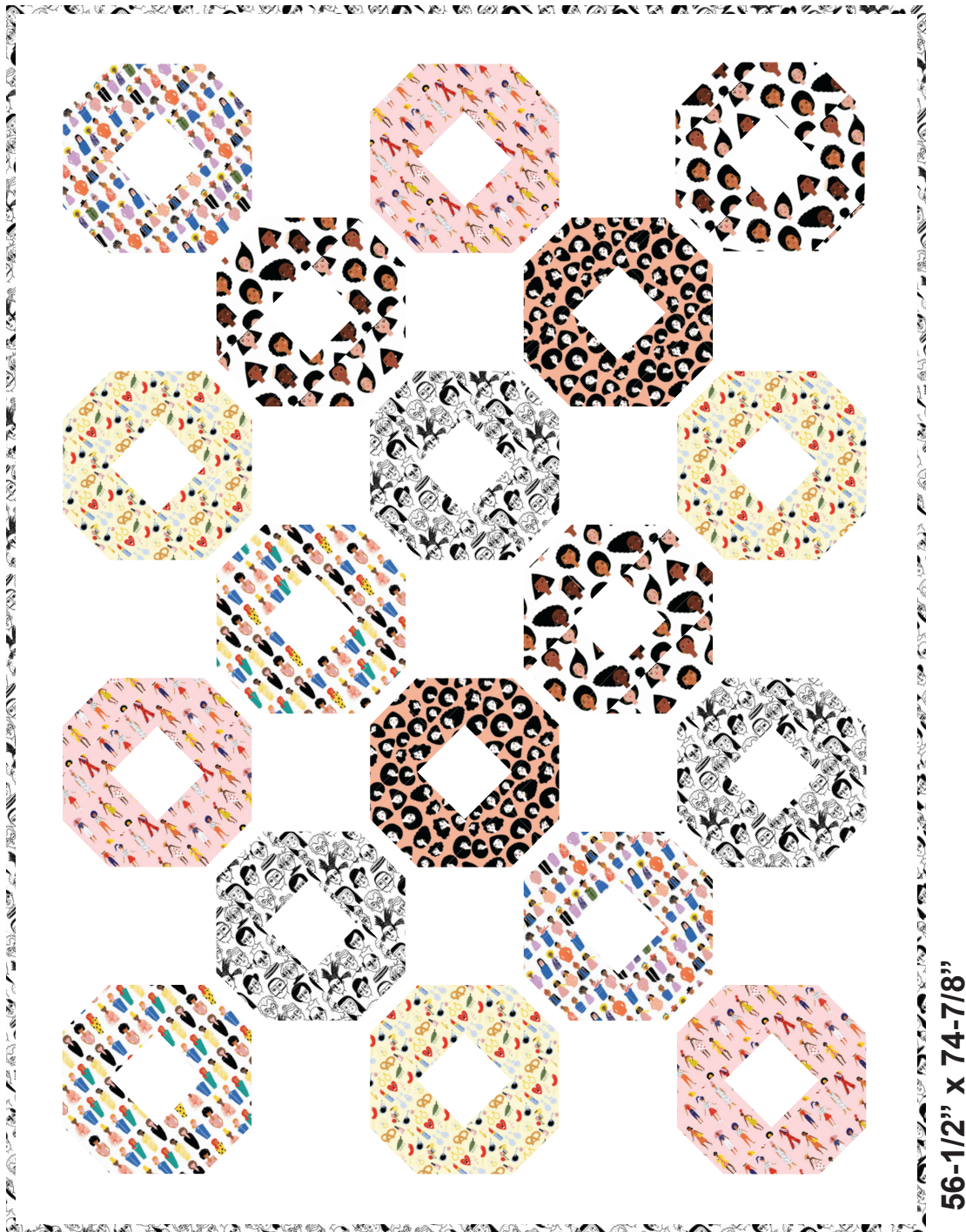


Friends & Faces — Connections

Featuring fabrics from the Friends & Faces collection by Carolyn Suzuki



Quilt designed by Lisa Swenson Ruble



901 E. 14th Avenue
North Kansas City, MO 64116
(816) 421-2000
www.pbsfabrics.com

Finished Quilt Size: 56-1/2" x 74-7/8"
Finished Block Size: 12" square
Number of Blocks: 18

Yardages and Cutting

WOF means width of fabric from selvage to selvage. Remove as little fabric as possible when trimming selvage edges.

3/8 yard Faces on Tan, 120-21473

3/8 yard People with Yellow, 120-21474

3/8 yard People with Purple, 120-21477

From each fabric, cut:

- 2 strips 4-1/2" x WOF; cut into (4) 4-1/2" x 12-1/2" pieces and (4) 4-1/2" squares

1/2 yard Yellow Print, 120-21476

1/2 yard People on Pink, 120-21478

1/2 yard Faces on White, 120-21479

From each fabric, cut:

- 3 strips 4-1/2" x WOF; cut into (6) 4-1/2" x 12-1/2" pieces and (6) 4-1/2" squares

1-1/8 yards Black & White Heads, 120-21475

- 3 strips 4-1/2" x WOF; cut into (6) 4-1/2" x 12-1/2" pieces and (6) 4-1/2" squares
- 7 strips 2-1/4" x WOF for binding

3-3/8 yards Painter's Palette Solid White, 121-000

- 2 strips 19-5/8" x WOF; cut into (3) 19-5/8" squares and (16) 4-1/2" squares. Cut each 19-5/8" square diagonally in half twice to make setting triangles

- 1 strip 10-3/4" x WOF; cut into (2) 10-3/4" squares and (4) 4-1/2" squares. Cut each 10-3/4" square diagonally in half once to make corner triangles

- 8 strips 4-1/2" x WOF; cut into (70) 4-1/2" squares

- 17 strips 1-1/2" x WOF; cut (2) 1-1/2" x 40-1/2" strips, (2) 1-1/2" x 14-1/2" pieces, and (24) 1-1/2" x 12-1/2" pieces. Reserve (6) strips for long sashing strips

4-3/4 yards backing fabric of choice

- 2 pieces 83" x WOF

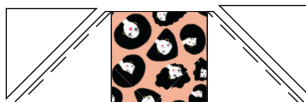
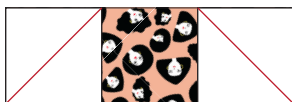
Batting

- 1 piece 65" x 83"

Piecing the Blocks

Use a 1/4" seam allowance for all stitching. Press all seams toward the prints in blocks and sashing in rows.

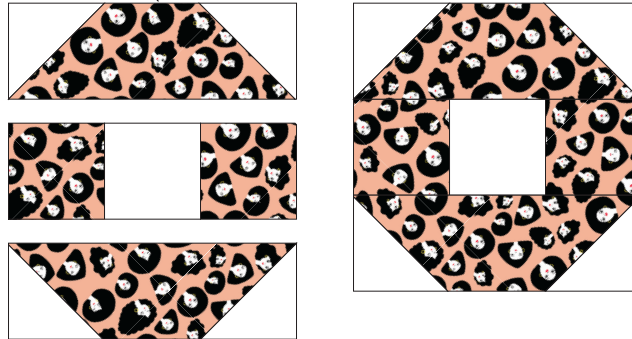
1. Draw a diagonal line on the wrong side of (2) 4-1/2" White squares. Position the marked squares on both ends of (1) 4-1/2" x 12-1/2" Faces on Tan piece. Stitch on the marked lines, trim seam allowance to 1/4" and press open. Make (2) outer row units.



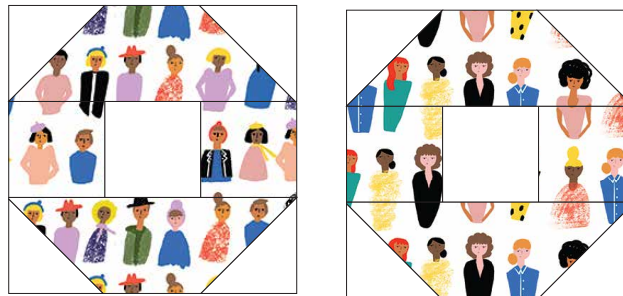
2. Sew 4-1/2" Faces on Tan squares to opposite sides of (1) 4-1/2" White square to make a center row.



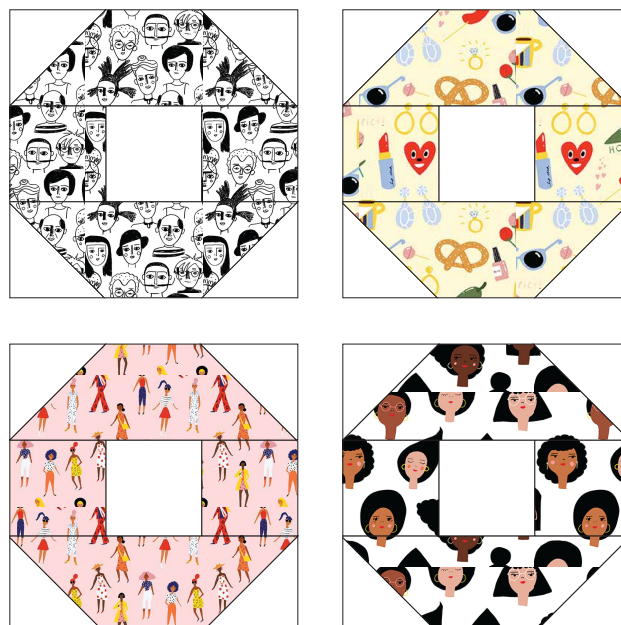
3. Sew row units to opposite sides of the center row to make a 12-1/2" square Faces on Tan block. Make (2) Faces on Tan blocks.



4. In the same way, make a total of (2) blocks each using the following prints: People with Purple and People with Yellow.

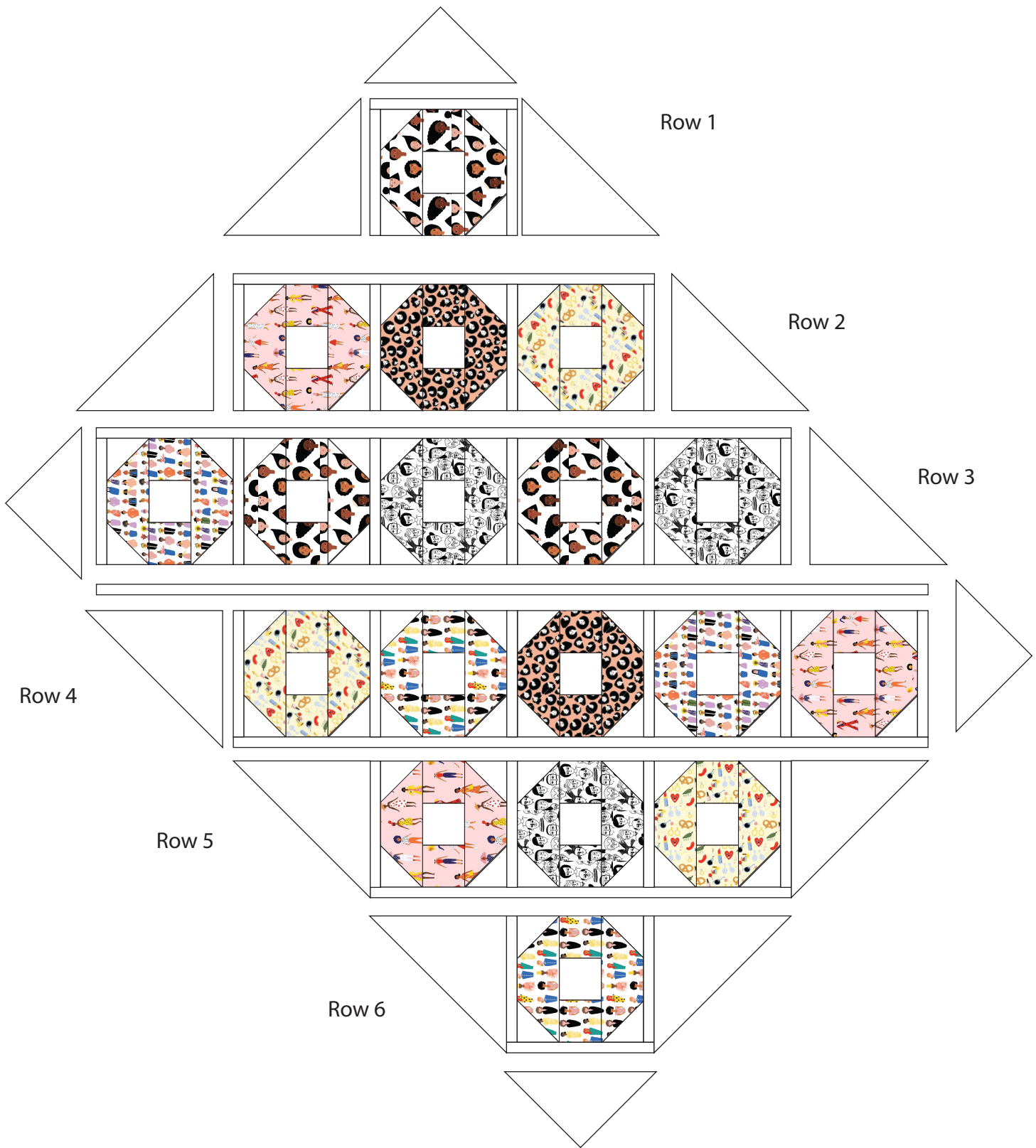


5. In the same way make a total of (3) blocks each using the following prints: Black & White Heads, Yellow Print, People on Pink, and Faces on White.



Completing the Quilt

1. Referring to the Quilt Layout Diagram on the following page, lay out the (18) blocks alternating with (24) 1-1/2" x 12-1/2" White pieces. Sew the blocks and pieces together in each diagonal row.
2. Sew the remaining (6) 1-1/2" x WOF White strips short ends together into a long strip. Cut (1) 79-1/2" length and (2) 66-1/2" lengths.
3. Rows 1 and 6. Sew 1-1/2" x 14-1/2" White strips to the block in Row 1. Sew 19-5/8" White setting triangles to the top and bottom of the block. Repeat to make Row 6.
4. Rows 2 and 5. Sew (1) 1-1/2" x 40-1/2" White strip to the blocks in Row 2. Sew 19-5/8" White setting triangles to opposite ends of the row. Repeat to make Row 5.
5. Rows 3 and 4. Sew (1) 1-1/2" x 66-1/2" White strip to the blocks in Row 3. Sew (1) 19-5/8" White setting triangle to the bottom of the row. Repeat to make Row 4, except sew the triangle to the top. Note: Set aside (2) remaining 19-5/8" White triangles for another project.
6. Sew Rows 3 and 4 to opposite long sides of the 1-1/2" x 79-1/2" White strip. Sew Rows 1 and 2 to the opposite long edge of Row 3, and add Rows 5 and 6 to the opposite long edge of Row 4. Sew 10-3/4" White corner triangles to all (4) corners of the quilt top.
7. Remove the selvedge edges from the backing pieces. Join the pieces on the long edges with a 1/2" seam allowance. Press seam open. Trim to make a 65" x 83" backing piece.
8. Layer, baste and quilt. Use the (7) 2-1/4" x WOF Black & White Heads strips to bind the quilt.



Quilt Assembly Diagram

Friends & Faces — Connections

1 kit 5 kits 10 kits
 120-21473 Faces on Tan
 3/8 yard 1-7/8 yards 3-3/4 yards



120-21474 People with Purple
 3/8 yard 1-7/8 yards 3-3/4 yards



120-21477 People with Yellow
 3/8 yard 1-7/8 yards 3-3/4 yards



120-21476 Yellow Print
 1/2 yard 2-1/2 yards 5 yards



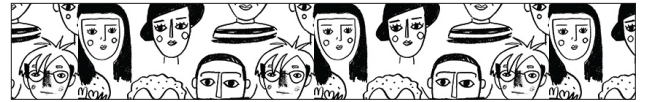
1 kit 5 kits 10 kits
 120-21478 People on Pink
 1/2 yard 2-1/2 yards 5 yards



120-21479 Faces on White
 1/2 yard 2-1/2 yards 5 yards



120-21475 Black & White Heads
 1-1/8 yards 5-5/8 yards 11-1/4 yards



121-000 Painter's Palette Solid White
 3-3/8 yards 16-7/8 yards 33-3/4 yards



Backing of Choice
 4-3/4 yards 23-3/4 yards 47-1/2 yards