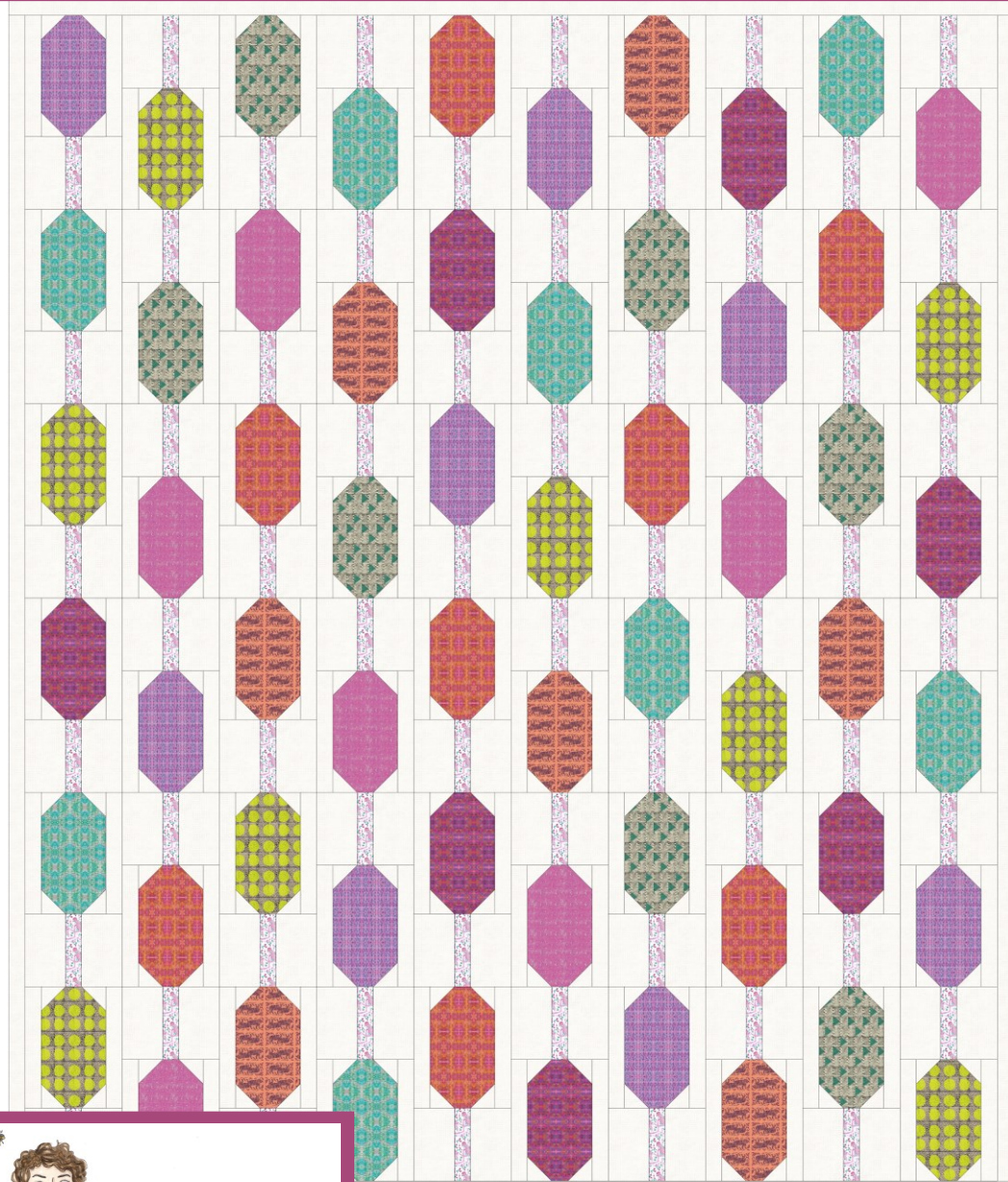


Beaded Curtains

#125



A Quilt Pattern
size 62" x 74"
Designed by Jennifer Long



Beaded Curtains

A FREE Quilt Pattern Designed

By Jennifer Long

For

Paintbrush Studio Fabrics.

62" x 74"

Thank you for downloading my Beaded Curtains Quilt Pattern. I am so honored that this design has inspired you and I am looking forward to seeing your finished quilt! I wanted to design a quilt pattern that would show off all the lovely prints in Sumana Ghosh Witherspoon's Indian Summer with Paintbrush Studio. This is a fun, easy and strikingly, beautiful quilt! Come join me as we pull back the curtains to witness the magic behind.

If you share on social media, I would really appreciate it if you used the hashtags

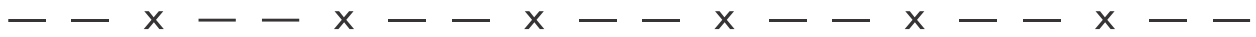
#BeadedCurtainsQuilt #IndianSummerFabric #PaintbrushStudio and #BeeSewInspired.

Thank you for letting a little piece of my heart into your sewing room!

Sincerely,

Jennifer Long





Beaded Curtains



Finished quilt size 62" x 74"

© 2020 Jennifer Long, All Rights Reserved. Bee Sew Inspired.

Pattern questions please direct to beesewinspired@yahoo.com

This pattern is NOT FOR RESALE without prior consent from Bee Sew Inspired.

Instructions:

Please read through all the directions first before starting. Measurements have all included a 1/4" seam allowance. Sew with right sides together, unless otherwise stated. Press all seams in the direction of the arrows on the diagrams. Yardage is based on a 42" width of fabric.

WOF: Width of Fabric;

LOF: Length of Fabric;

RST: Right Sides Together

HST: Half-Square-Triangle

Fabric Requirements:

- ✂ ¼ yard of each of the 8 Paintbrush Studio Indian Summer prints: 120-21665, 120-21666, 120-21667, 120-21668, 120-21669, 120-21671, 120-21672, 120-21673
- ✂ 3/8 yard of 120-21674 "connecting string" print
- ✂ 3 ¾ yard of 121-121 Linen Painter's Palette Solid background fabric
- ✂ ½ yard of 120-21665 for backing
- ✂ ½ yard of 120-21671 for binding



— — x — — x — — x — — x — — x — — x — —

Cutting Instructions:

✂ From EACH of the 8 Paintbrush Studio Indian Summer prints:

◆ Cut 8 - 4 ½" x 8" rectangles (A)

Note: you will have 4 extra unused rectangles.



✂ From 120-21674 "connecting string" fabric:

◆ Cut 60 - 1 ½" x 5" rectangles (B)

✂ From 121-121 Linen Painter's Palette Solid background fabric:

◆ Cut 120 - 1 ½" x 8" rectangles (C)

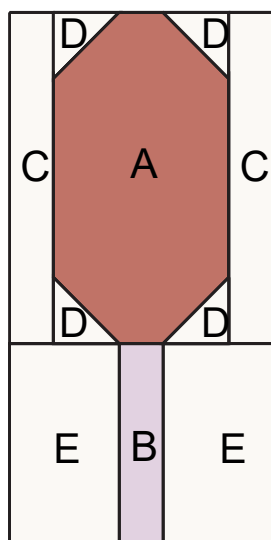
◆ Cut 240 - 2 ½" squares (D)

◆ Cut 120 - 3" x 5" rectangles (E)

◆ Cut 7 - 1 ½" strips of fabric for borders

Beaded Curtain Block:

Unfinished Block size: 6 ½" x 12 ½"



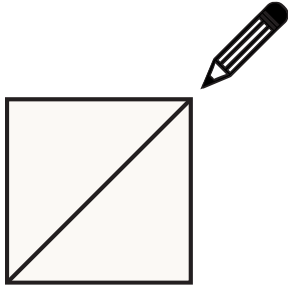
Letter	Piece	Cutting Directions per block (width x height)
A	Bead fabric (8 prints)	Cut 1 - 4 ½" x 8" rectangle of each of the 8 prints
B	String fabric	Cut 1 - 1 ½" x 5" rectangle
C	Background fabric	Cut 2 - 1 ½" x 8" rectangles
D		Cut 4 - 2" squares
E		Cut 2 - 3" x 5" rectangles



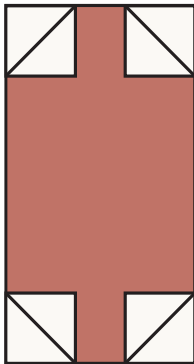
Block Assembly:

Assemble the Beaded Curtain Block in the following order:

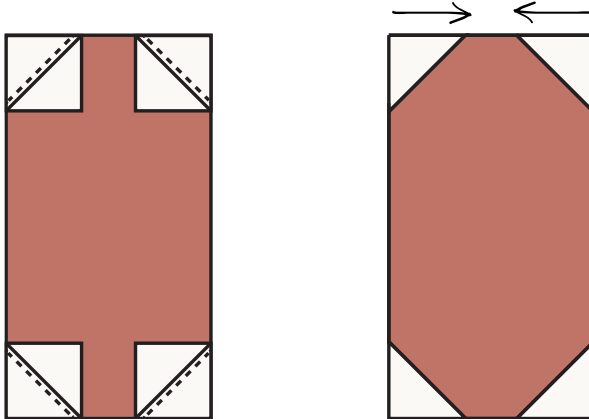
- ✂ Draw a diagonal line on each of your 4 background D-squares from one corner to the opposite corner.



- ✂ Place a drawn D-square on each corner of your main A-rectangle, right-sides together, as shown below. Pin in place. Sew along the drawn line.

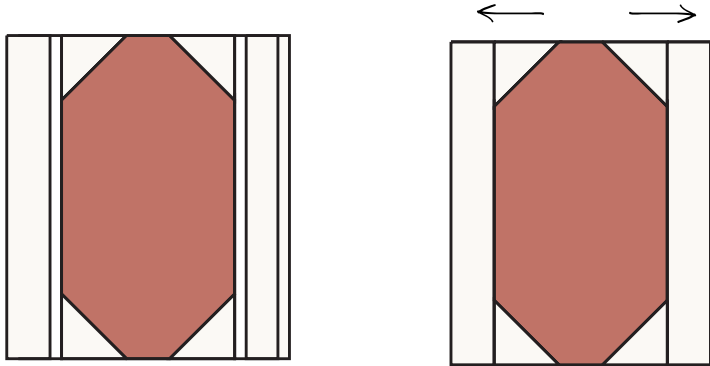


- ✂ Using your ruler and rotary cutter, trim a 1/4" seam allowance on the outside of each stitched triangle seam. Press seams in towards the printed bead fabric.

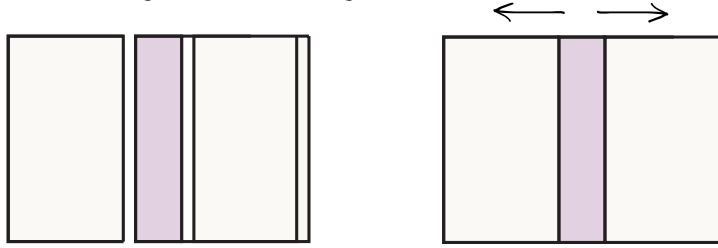




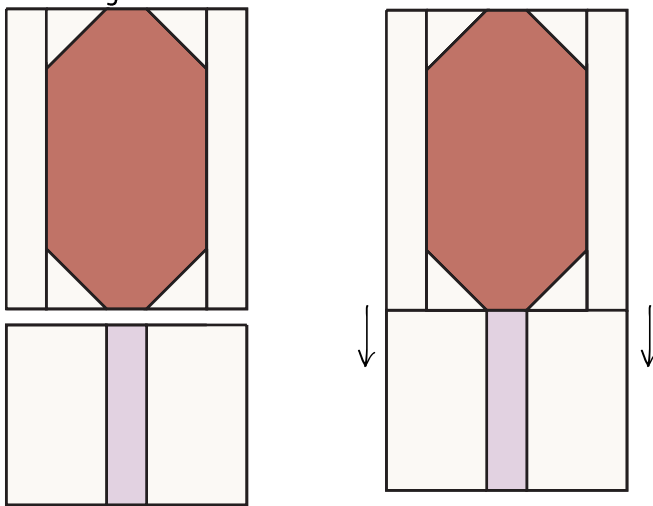
✂ Sew a background C-rectangle on either side of your beaded block. Press seams outwards. Set aside.



✂ Sew a background E-rectangle on either side of the B string block. Press seams outwards.

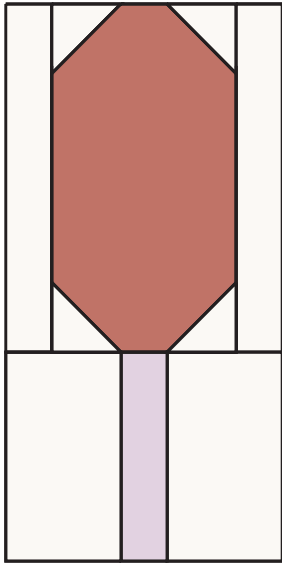


✂ Sew the Bead unit (C-A-C) to the String unit (E-B-E) as shown below. Press seams towards the string unit.





✂ Your Beaded Block is complete!

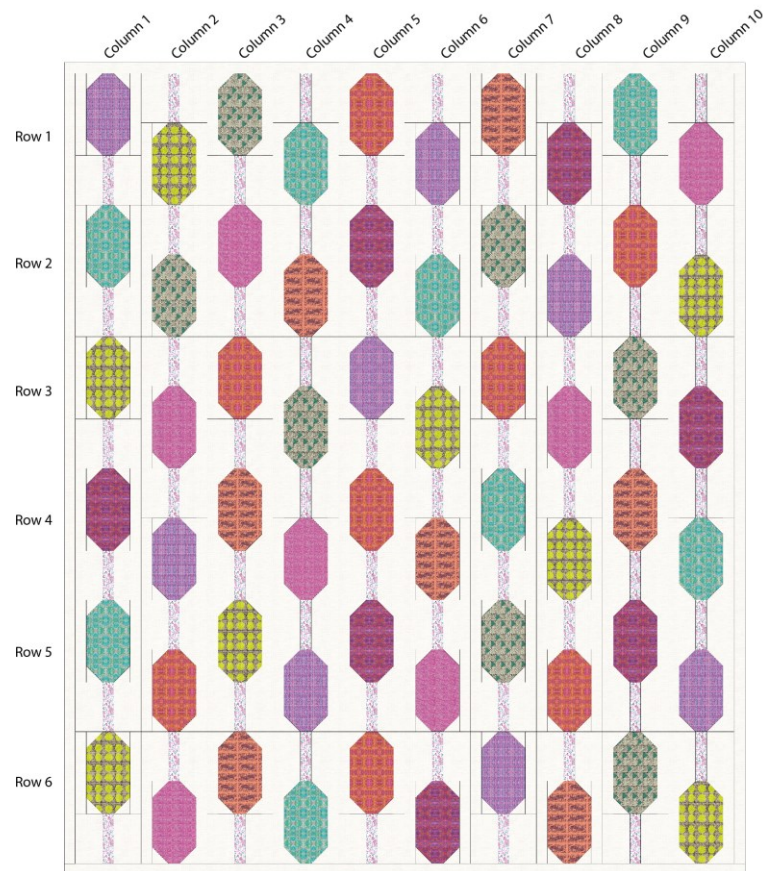


✂ Make 60 Beaded Blocks repeating this process. Please note you will have 4 unused A-rectangle fabrics that were cut. You can follow the cover diagram when choosing which 4 to leave out, or you can simply sew your favorite prints first!



— — X — — X — — X — — X — — X — — X — —

Quilt Layout:



✂ On your design wall, or open space on the floor, layout your Beaded Curtain quilt blocks. You can follow the diagram above to have the same scrappy look as the sample cover quilt, or create your own. Continue playing with the layout until you are satisfied with how the overall quilt looks. Note: the blocks on even columns are flipped 180 degrees.

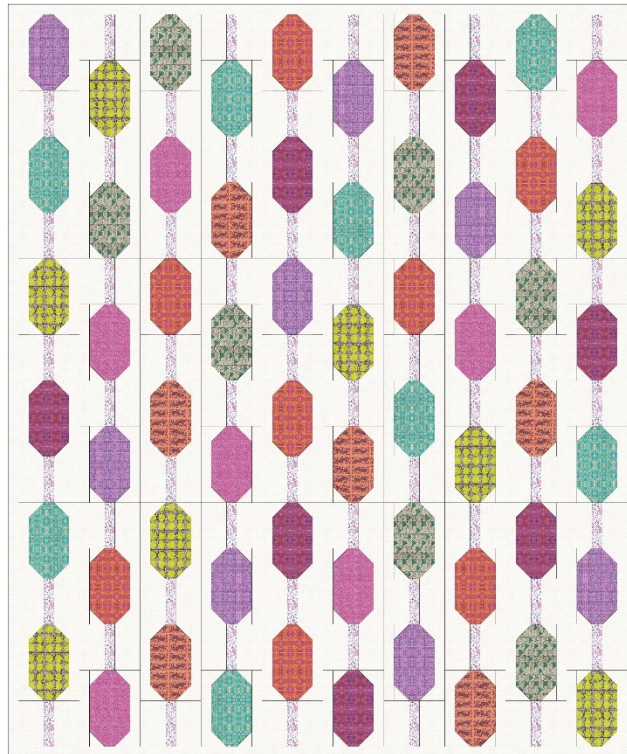
Note: You can also use the coloring page at the end of this pattern to find the color layout you like best!

- ✂ Sew all 10 blocks in Row 1 together. Press to one side.
- ✂ Sew all 10 blocks in Row 2 together. Press to the opposite side.
- ✂ Continue sewing the remaining rows together, alternating the direction you press each row.
- ✂ Pin and sew Row 1 and 2 together. Make sure to pin at all your intersecting seams so they match and the center of your "bead" meets the center of your "string."
- ✂ Repeat this process for Rows 3 and 4, as well as Rows 5 and 6.
- ✂ Continue the pinning and sewing process for Rows 2 to 3, and Rows 4 to 5.

— — x — — x — — x — — x — — x — — x — —

Sewing on the Borders:

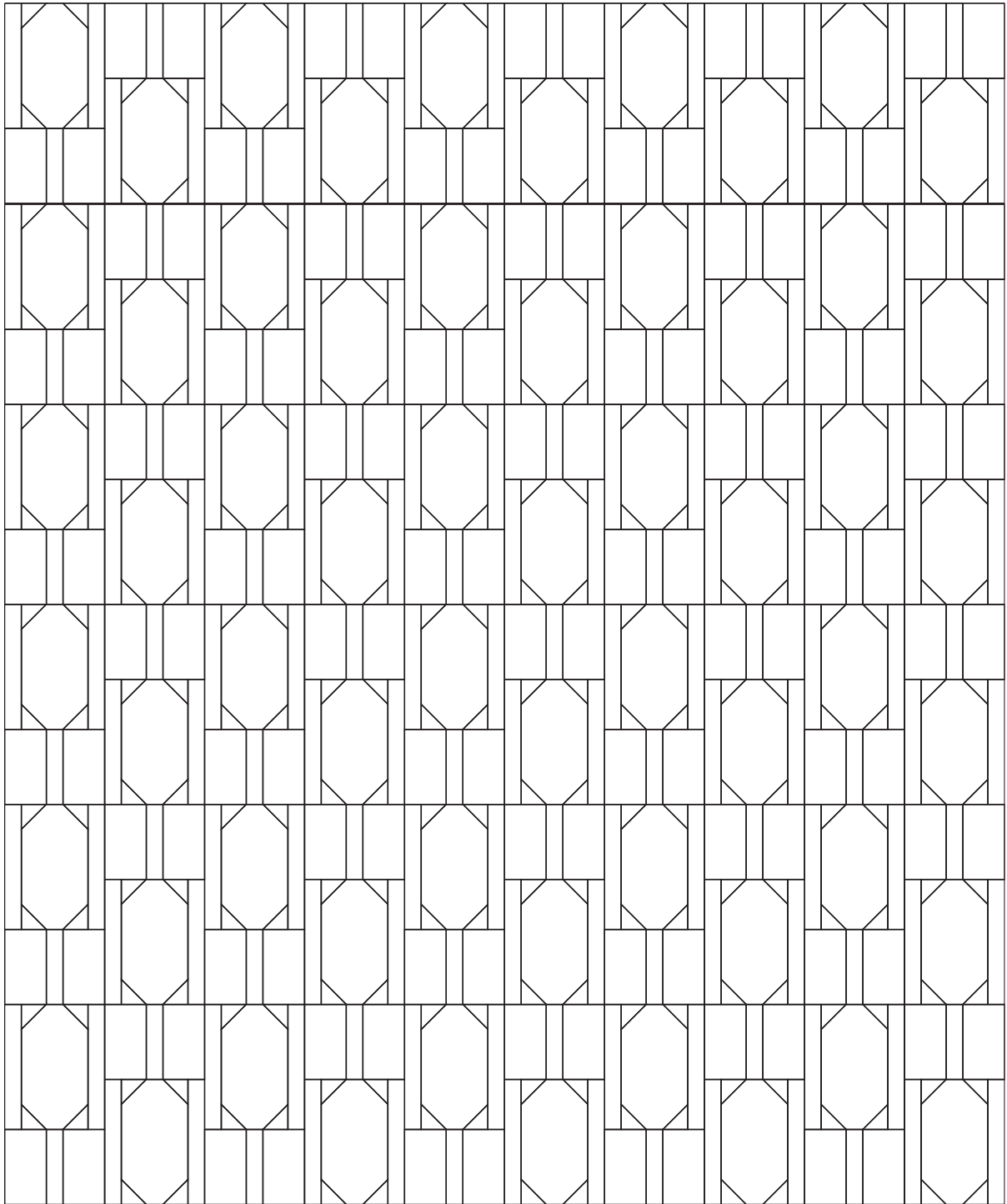
- ✂ Sew the 7 - $\frac{1}{2}$ " background border strips together to make 1 one strip. Press seams in one direction.
- ✂ Sew the borders along the vertical edges first. You can pre-cut them to measure 72 $\frac{1}{2}$ " each, or you can place a pin at 72 $\frac{1}{2}$ " on the border strip. When you sew, this will give you a little grace for your quilt measurements.
- ✂ Press the vertical strips towards the outside.
- ✂ Repeat this process with the remaining two horizontal border strips. They should each measure 62" or you can use the pinning method as above.
- ✂ Press the horizontal strips towards the outside.



- ✂ You're quilt top is complete!!!
- ✂ Layer your backing, batting and quilt top. Quilt as desired. Bind the edges with your favorite binding method.



Beaded Curtain Coloring Page:





For more inspirations and FREE, live video tutorials,
come and join our quilting community on Facebook at

INSPIRED QUILTING

<https://www.facebook.com/groups/244232940336815>

©2020 Jennifer Long, Bee Sew Inspired

Beaded Curtain Quilt Pattern

Free Pattern for Paintbrush Studio

If you have any pattern questions please email me at beesewinspired@yahoo.com.

<https://instagram.com/beesewinspired>

<https://facebook.com/beesewinspired>

