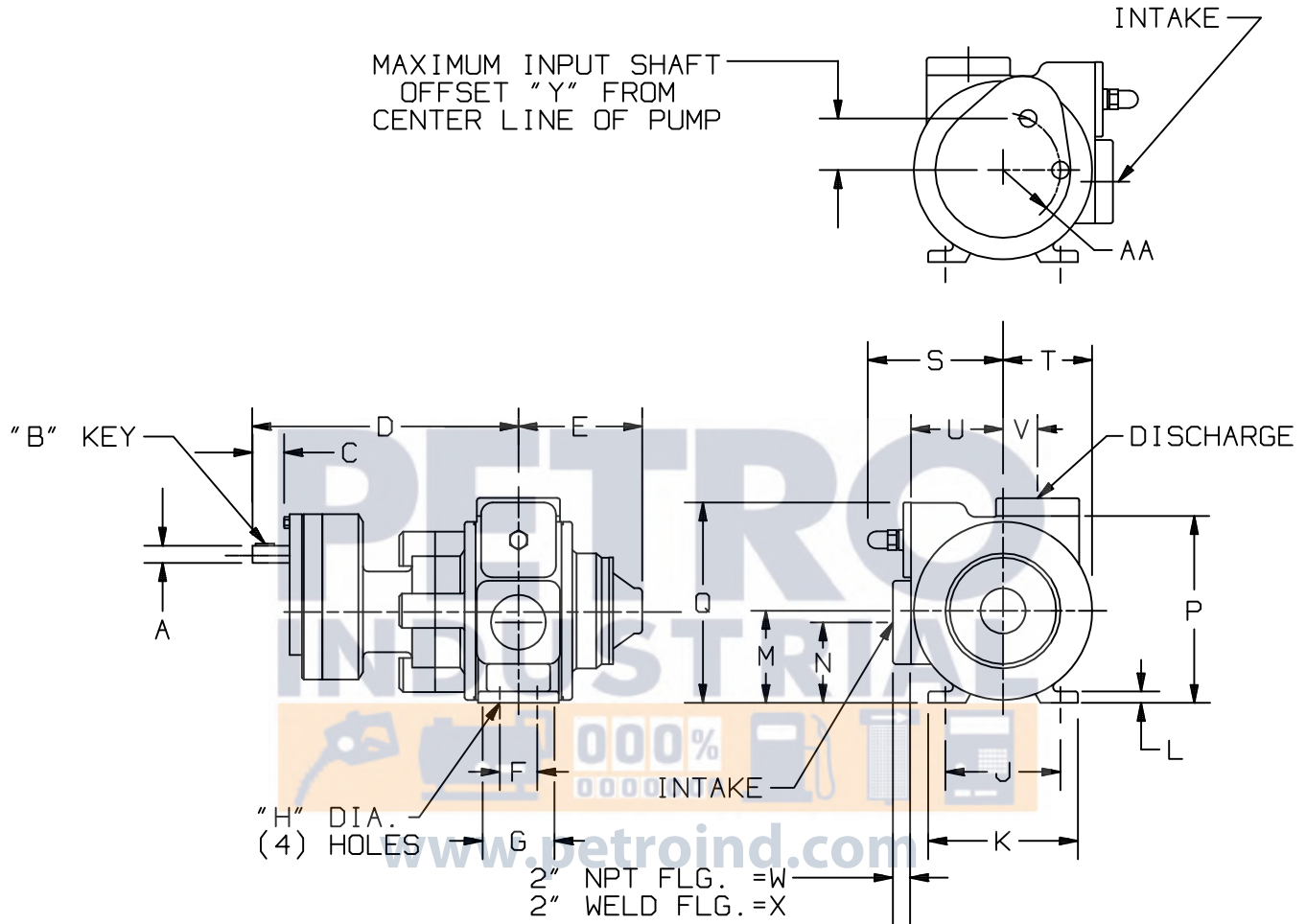


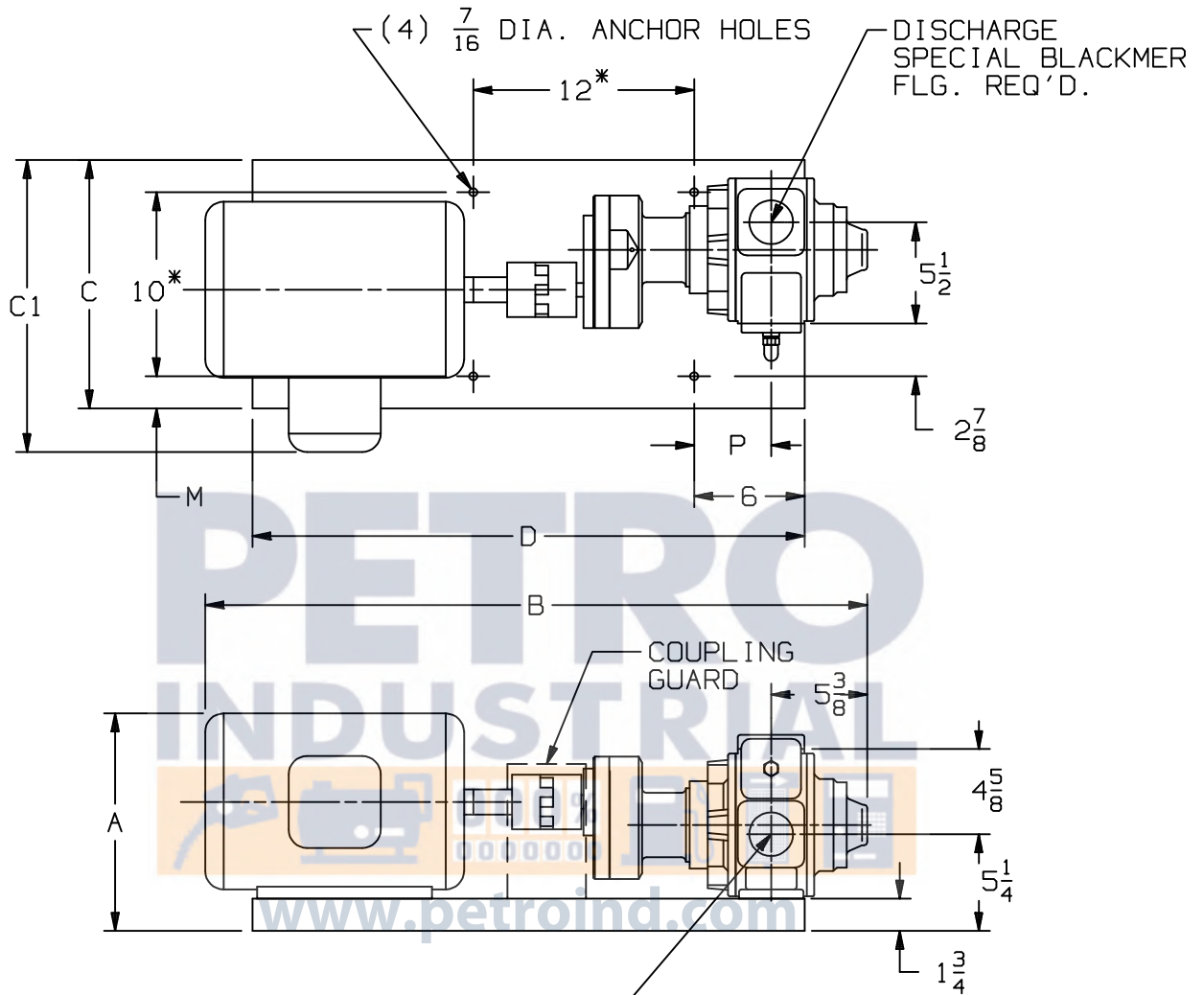
RIGHT HAND ROTATION. FOR LEFT HAND ROTATION, SHAFT PROJECTION IS OPPOSITE THAT SHOWN.



MOTOR			UNITS	DIMENSIONS									
FRAME SIZE				A	B	C	D	E	F	G	H	J	K
			IN	3/4	3/16	1 3/8	11 9/16	5 1/4	1 5/8	3 1/2	7/16	5	6 1/2
			MM	19,1	4,8	35,9	293,7	133,3	41,3	88,9	11,1	127	165,1
				L	M	N	P	Q	R	S	T	U	V
			IN	1/2	4	3 1/2	8 1/8	8 11/16	—	5 7/8	3 7/8	4	1 1/2
			MM	12,7	101,6	88,9	206,4	220,6	—	149,2	98,4	101,6	38,1
				W	X	Y	Z	AA	BB	CC	DD	EE	FF
			IN	3/4	1 3/16	2 1/4	—	2 1/2	—	—	—	—	—
			MM	19,1	30,2	57,2	—	63,5	—	—	—	—	—
				GG	HH					PUMP WEIGHT	WITH STD. FLANGES		
			IN	—	—					LBS	110		
			MM	—	—					KG	50		

TYPE	SIZE	UNIT STYLE
GX RIGHT HAND ROTATION	2B	GX

DIMENSIONS 101-105	
Section	101
Effective	February 2003
Replaces	March 1999
Page 2/3	



UNIT DIMENSION LESS FLANGES

* TOLERANCE $\pm \frac{1}{8}$

TOLERANCE ON OTHER DIMENSIONS $\pm \frac{1}{4}$

"A" DIMENSION LESS EYEBOLT

FLG. HT: 2" NPT- $\frac{3}{4}$

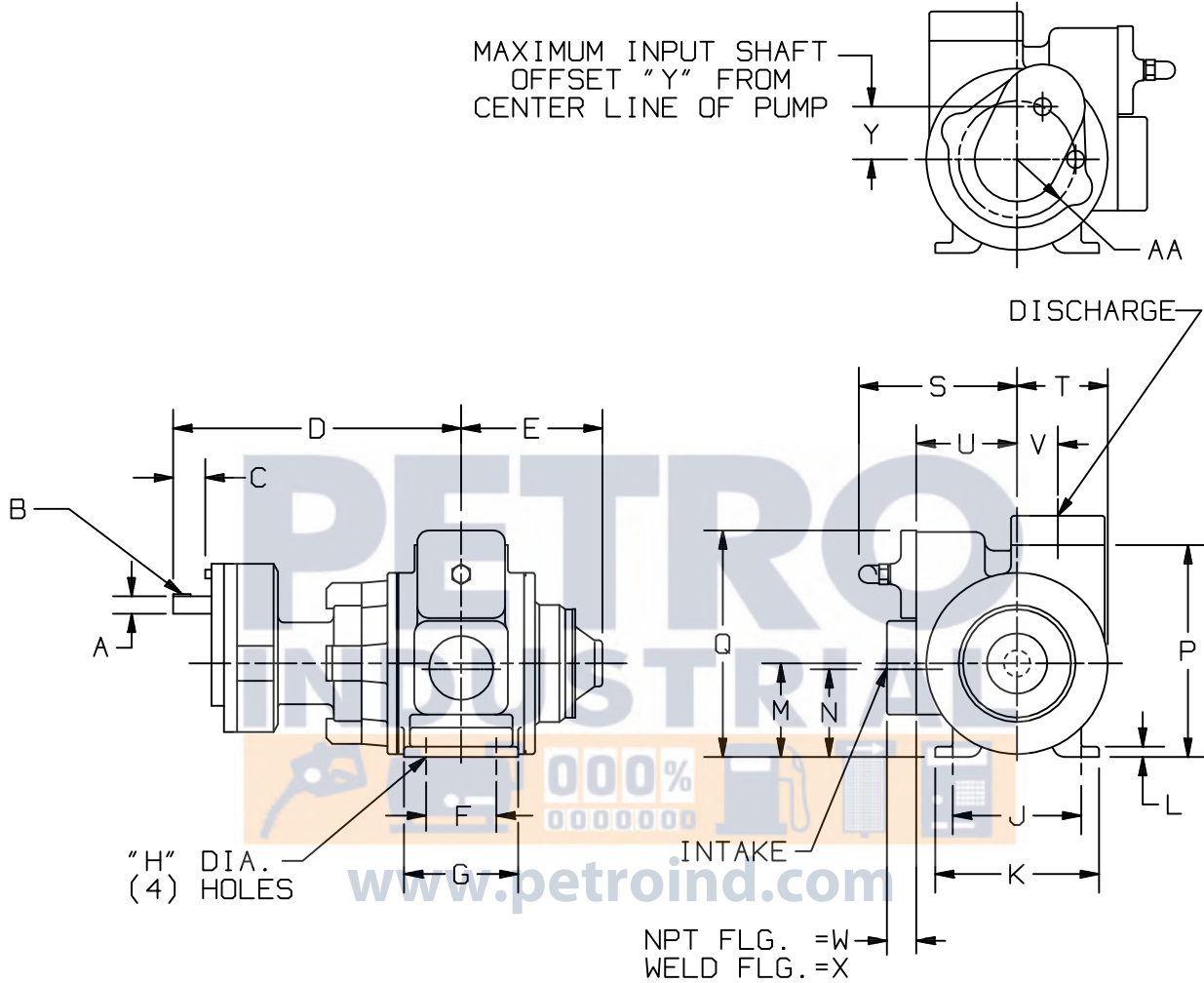
2" WELD-1 $\frac{3}{16}$

MOTOR			BASE NO.	DIMENSIONS								
FRAME SIZE				A	B	C	C1	D	M	P		
143T			901631	9 1/8	30	13	—	28	1 1/2	2 3/4		
145T			901631	9 1/8	31	13	—	28	1 1/2	2 3/4		
182T			901632	11 3/8	32 3/4	13	—	28	1 1/2	2 3/4		
184T			901632	11 3/8	33 3/4	13	—	28	1 1/2	2 3/4		
213T			901633	12 7/8	36 7/8	13 1/2	16	30	1 3/4	4 1/4		
215T			901633	12 7/8	38 3/8	13 1/2	16	30	1 3/4	4 1/4		

TYPE	SIZE	UNIT STYLE
GX	2.5B	PO

DIMENSIONS 101-106	
Section	101
Effective	February 2003
Replaces	October 1995
Page 1/3	

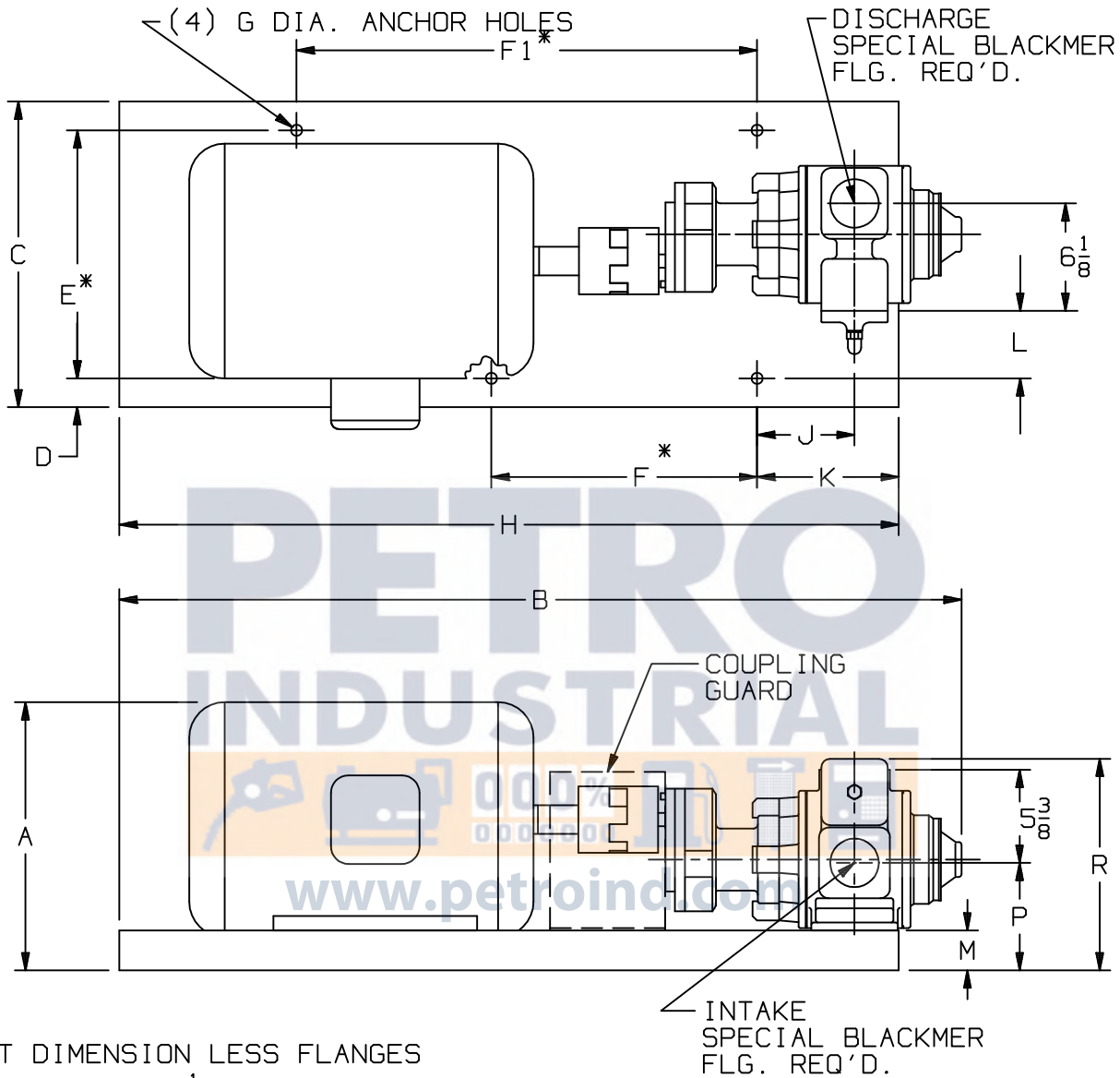
RIGHT HAND ROTATION. FOR LEFT HAND ROTATION, SHAFT PROJECTION IS OPPOSITE THAT SHOWN.



MOTOR			UNITS	DIMENSIONS									
FRAME SIZE				A	B	C	D	E	F	G	H	J	K
			IN	3/4	3/16	1 3/8	12 5/16	6	3	4 7/8	7/16	5 1/2	7
			MM	19,1	4,8	34,9	312,7	152,4	76,2	123,8	11,1	139,7	177,8
				L	M	N	P	Q	R	S	T	U	V
			IN	7/16	4	3 3/4	9 1/16	9 5/8	—	6 13/16	3 7/8	4 5/16	1 3/4
			MM	11,1	101,6	95,3	230,2	244,5	—	173	98,4	109,5	44,4
				W	X	Y	Z	AA	BB	CC	DD	EE	FF
			IN	1 3/16	1 1/4	2 1/4	—	2 1/2	—	—	—	—	—
			MM	30,2	31,8	57,1	—	63,5	—	—	—	—	—
				GG	HH					PUMP WEIGHT	WITH STD. FLANGES		
			IN	—	—					LBS	130		
			MM	—	—					KG	59		

TYPE	SIZE	UNIT STYLE
GX RIGHT HAND ROTATION	2.5B	GX

DIMENSIONS 101-106	
Section	101
Effective	February 2003
Replaces	MARCH 1999
Page 2/3	



UNIT DIMENSION LESS FLANGES

* TOLERANCE $\pm \frac{1}{8}$

TOLERANCE ON OTHER DIMENSIONS $\pm \frac{1}{4}$

"A" DIMENSION LESS EYEBOLT

FLG. HT: $2\frac{1}{2}$ " NPT- $1\frac{3}{16}$

$2\frac{1}{2}$ " WELD- $1\frac{1}{4}$

MOTOR			BASE NO.	DIMENSIONS														
FRAME SIZE				A	B	C	D	E	F	F1	G	H	J	K	L	M	P	R
143T			901634	9 1/2	31	13	1 1/2	10	12	12	7/16	28	3 1/2	6	2 5/8	1 3/4	5 1/2	11 3/8
145T			901634	9 1/2	31 5/8	13	1 1/2	10	12	12	7/16	28	3 1/2	6	2 5/8	1 3/4	5 1/2	11 3/8
182T			901635	11 3/8	35 5/8	13	1 1/2	10	12	12	7/16	28	3 1/2	6	2 5/8	1 3/4	5 1/2	11 3/8
184T			901635	11 3/8	37	13	1 1/2	10	12	12	7/16	28	3 1/2	6	2 5/8	1 3/4	5 1/2	11 3/8
213T			901636	12 7/8	38 1/4	14 3/4	2 3/8	10	12	12	7/16	33	3 1/2	6	2 5/8	1 3/4	5 1/2	11 3/8
215T			901636	12 7/8	39 3/4	14 3/4	2 3/8	10	12	12	7/16	33	3 1/2	6	2 5/8	1 3/4	5 1/2	11 3/8
254T			901365	15 1/4	48 1/4	17 1/4	1 5/8	14	15	26	5/8	44	5 1/2	8	3 7/8	2 1/4	6	12 1/2
256T			901365	15 1/4	48 1/4	17 1/4	1 5/8	14	15	26	5/8	44	5 1/2	8	3 7/8	2 1/4	6	12 1/2

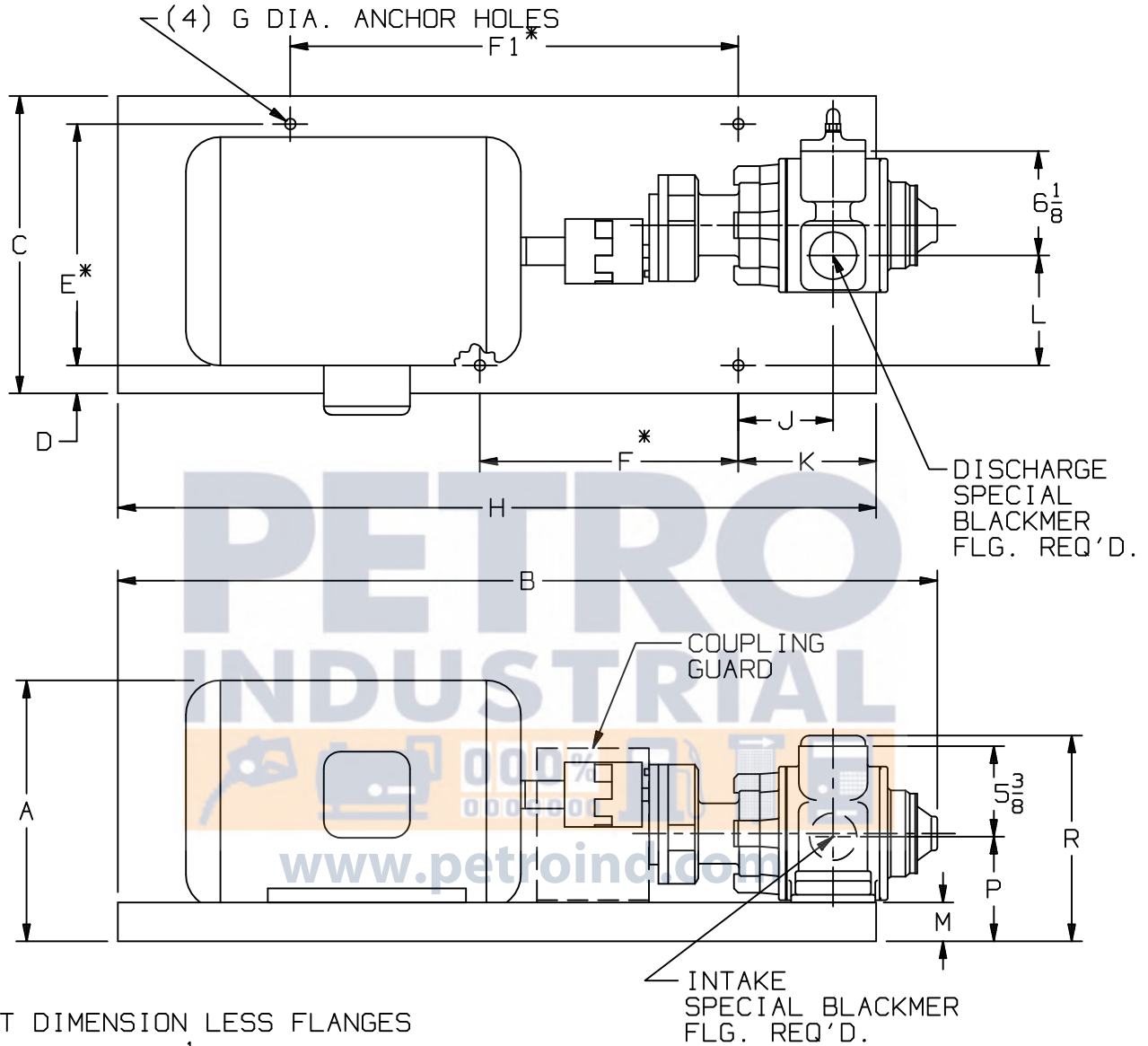
DIMENSIONS 101-106

Section 101
 Effective February 2003
 Replaces March 1999
 Page 3/3

TYPE
 GX
 LEFT HAND
 ROTATION

SIZE
 2.5B

UNIT
 STYLE
 GX



UNIT DIMENSION LESS FLANGES

* TOLERANCE $\pm \frac{1}{8}$

TOLERANCE ON OTHER DIMENSIONS $\pm \frac{1}{4}$

"A" DIMENSION LESS EYEBOLT

FLG. HT: $2\frac{1}{2}$ " NPT- $1\frac{3}{16}$

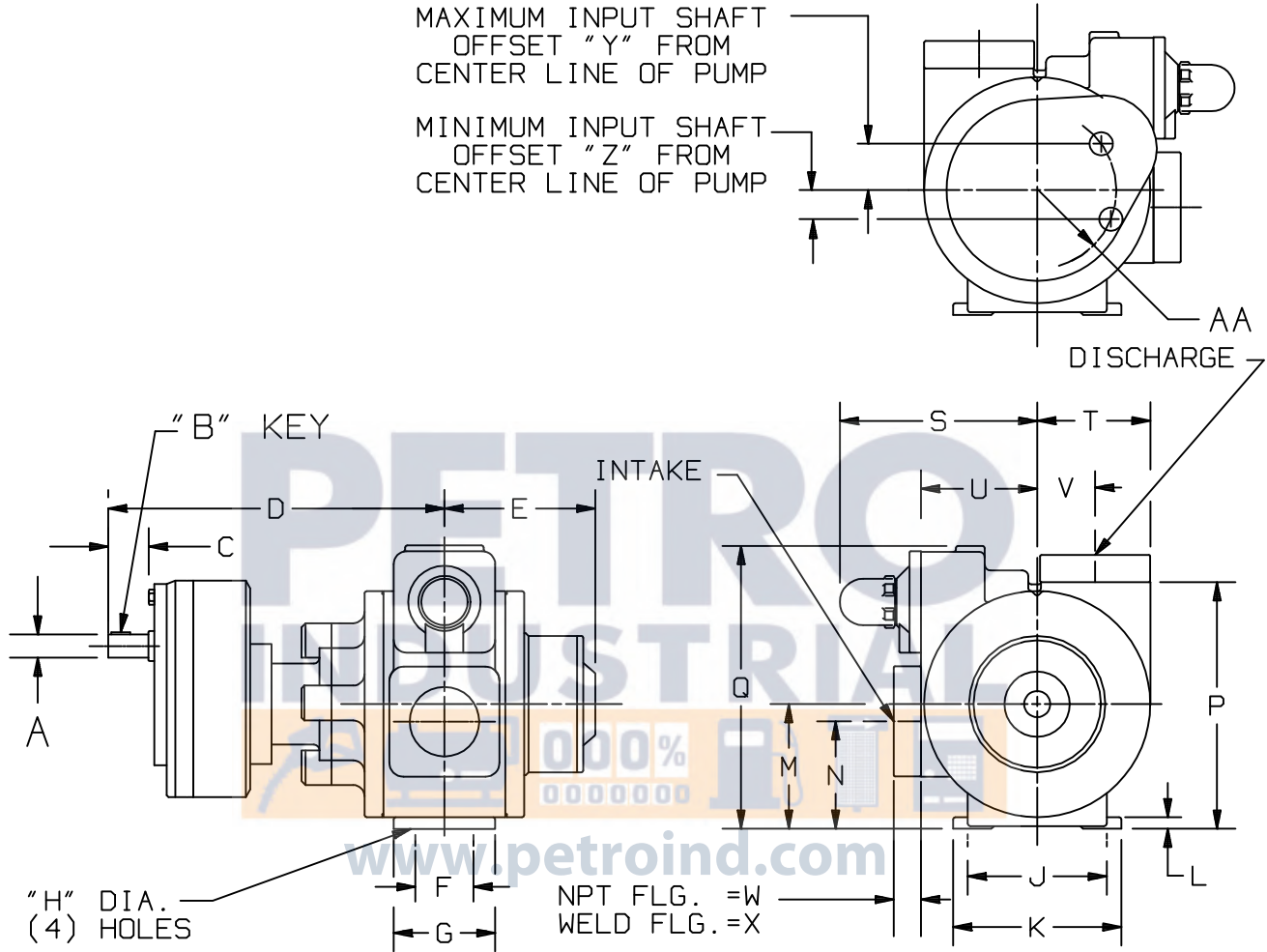
$2\frac{1}{2}$ " WELD- $1\frac{1}{4}$

MOTOR			BASE NO.	DIMENSIONS														
FRAME SIZE				A	B	C	D	E	F	F1	G	H	J	K	L	M	P	R
143T			901634	9 1/2	31	13	1 1/2	10	12	12	7/16	28	3 1/2	6	5 1/8	1 3/4	5 1/2	11 3/8
145T			901634	9 1/2	31 5/8	13	1 1/2	10	12	12	7/16	28	3 1/2	6	5 1/8	1 3/4	5 1/2	11 3/8
182T			901635	11 3/8	35 5/8	13	1 1/2	10	12	12	7/16	28	3 1/2	6	5 1/8	1 3/4	5 1/2	11 3/8
184T			901635	11 3/8	37	13	1 1/2	10	12	12	7/16	28	3 1/2	6	5 1/8	1 3/4	5 1/2	11 3/8
213T			901636	12 7/8	38 1/4	14 3/4	2 3/8	10	12	12	7/16	33	3 1/2	6	5 1/8	1 3/4	5 1/2	11 3/8
215T			901636	12 7/8	39 3/4	14 3/4	2 3/8	10	12	12	7/16	33	3 1/2	6	5 1/8	1 3/4	5 1/2	11 3/8
254T			901365	15 1/4	48 1/4	17 1/4	1 5/8	14	15	26	5/8	44	5 1/2	8	6 3/8	2 1/4	6	12 1/2
256T			901365	15 1/4	48 1/4	17 1/4	1 5/8	14	15	26	5/8	44	5 1/2	8	6 3/8	2 1/4	6	12 1/2

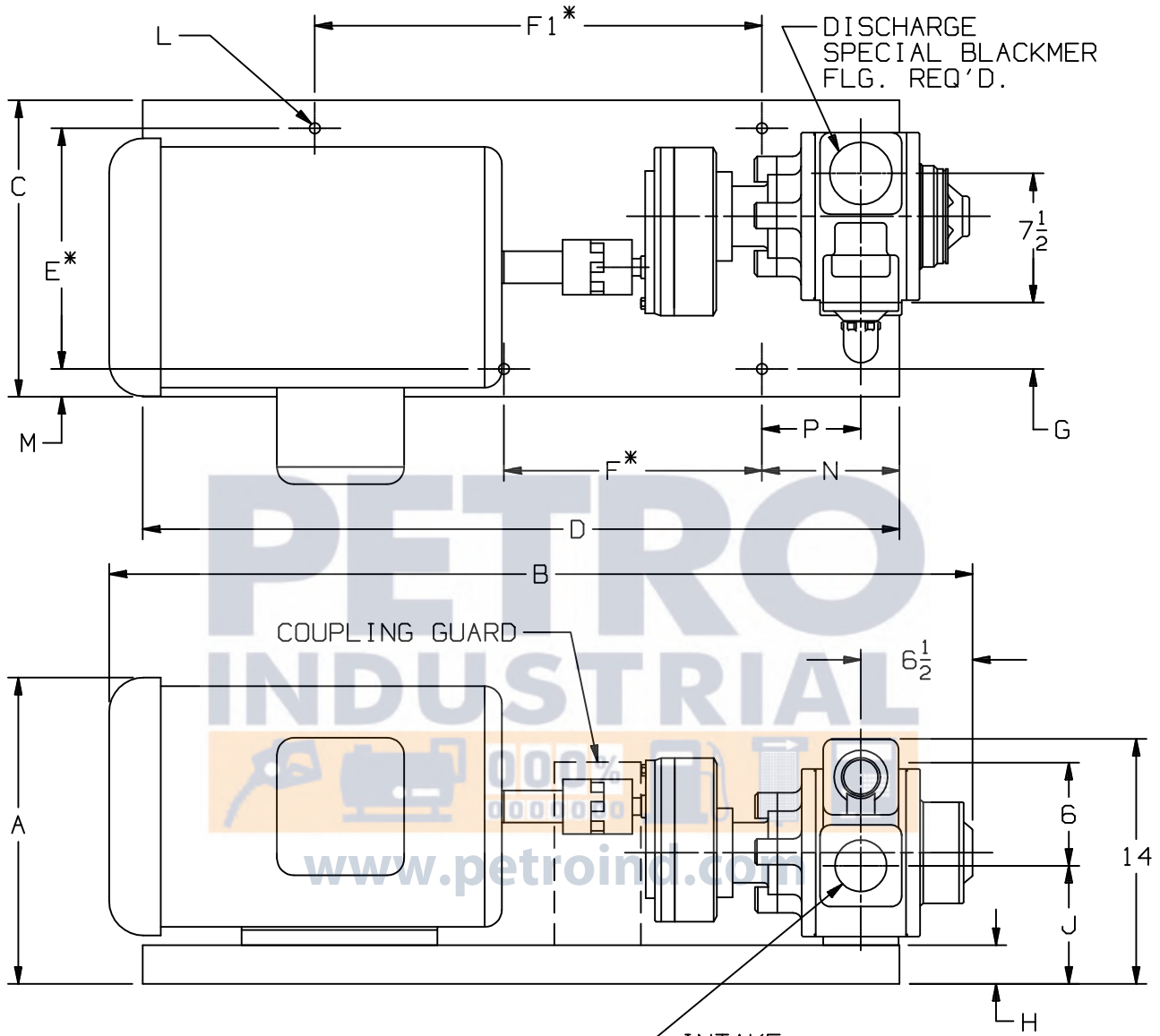
TYPE	SIZE	UNIT STYLE
GX	3E	PO

DIMENSIONS 101-107	
Section	101
Effective	February 2003
Replaces	October 1995
Page 1/3	

RIGHT HAND ROTATION. FOR LEFT HAND ROTATION, SHAFT PROJECTION IS OPPOSITE THAT SHOWN.



MOTOR			UNITS	DIMENSIONS									
FRAME SIZE				A	B	C	D	E	F	G	H	J	K
			IN	1	1/4	1 3/4	14 1/2	6 3/8	2 1/2	4 3/8	5/8	6	7 1/4
			MM	25,4	6,4	44,5	368,3	161,9	63,5	111,1	15,9	152,4	184,2
				L	M	N	P	Q	R	S	T	U	V
			IN	1/2	5 3/8	4 5/8	10 5/8	12 1/4	—	8 9/16	4 7/8	5	2 1/2
			MM	12,7	136,6	117,5	269,9	311,2	—	217,5	123,8	127	63,5
				W	X	Y	Z	AA	BB	CC	DD	EE	FF
			IN	1 1/8	1 3/16	2	1 1/4	3 3/8	—	—	—	—	—
			MM	28,6	30,2	50,8	31,8	9,5	—	—	—	—	—
				GG	HH					PUMP WEIGHT	WITH STD. FLANGES		
			IN	—	—					LBS	230		
			MM	—	—					KG	104		



UNIT DIMENSION LESS FLANGES

* TOLERANCE $\pm \frac{1}{8}$

TOLERANCE ON OTHER DIMENSIONS $\pm \frac{1}{4}$

"A" DIMENSION LESS EYEBOLT

FLG. HT: 3" NPT-1 $\frac{1}{8}$

3" WELD-1 $\frac{3}{16}$

FRAME SIZE	MOTOR	UNITS	DIMENSIONS													
			A	B	C	D	E	F	F1	G	H	J	L	M	N	P
182T		901770	10 $\frac{7}{8}$	37 $\frac{3}{8}$	14 $\frac{3}{4}$	33	11 $\frac{1}{4}$	12	12	2 $\frac{3}{8}$	1 $\frac{3}{4}$	6 $\frac{3}{8}$	$\frac{7}{16}$	1 $\frac{3}{4}$	6	3 $\frac{1}{8}$
184T		901770	10 $\frac{7}{8}$	38 $\frac{3}{8}$	14 $\frac{3}{4}$	33	11 $\frac{1}{4}$	12	12	2 $\frac{3}{8}$	1 $\frac{3}{4}$	6 $\frac{3}{8}$	$\frac{7}{16}$	1 $\frac{3}{4}$	6	3 $\frac{1}{8}$
213T		901770	12 $\frac{3}{8}$	40 $\frac{7}{8}$	14 $\frac{3}{4}$	33	11 $\frac{1}{4}$	12	12	2 $\frac{3}{8}$	1 $\frac{3}{4}$	6 $\frac{3}{8}$	$\frac{7}{16}$	1 $\frac{3}{4}$	6	3 $\frac{1}{8}$
215T		901770	12 $\frac{3}{8}$	41 $\frac{5}{8}$	14 $\frac{3}{4}$	33	11 $\frac{1}{4}$	12	12	2 $\frac{3}{8}$	1 $\frac{3}{4}$	6 $\frac{3}{8}$	$\frac{7}{16}$	1 $\frac{3}{4}$	6	3 $\frac{1}{8}$
254T		901676	14 $\frac{3}{4}$	45 $\frac{1}{8}$	17 $\frac{1}{4}$	44	14	15	26	4 $\frac{7}{16}$	2 $\frac{1}{4}$	6 $\frac{7}{8}$	$\frac{5}{8}$	1 $\frac{5}{8}$	8	5 $\frac{1}{2}$
256T		901676	14 $\frac{3}{4}$	46 $\frac{7}{8}$	17 $\frac{1}{4}$	44	14	15	26	4 $\frac{7}{16}$	2 $\frac{1}{4}$	6 $\frac{7}{8}$	$\frac{5}{8}$	1 $\frac{5}{8}$	8	5 $\frac{1}{2}$

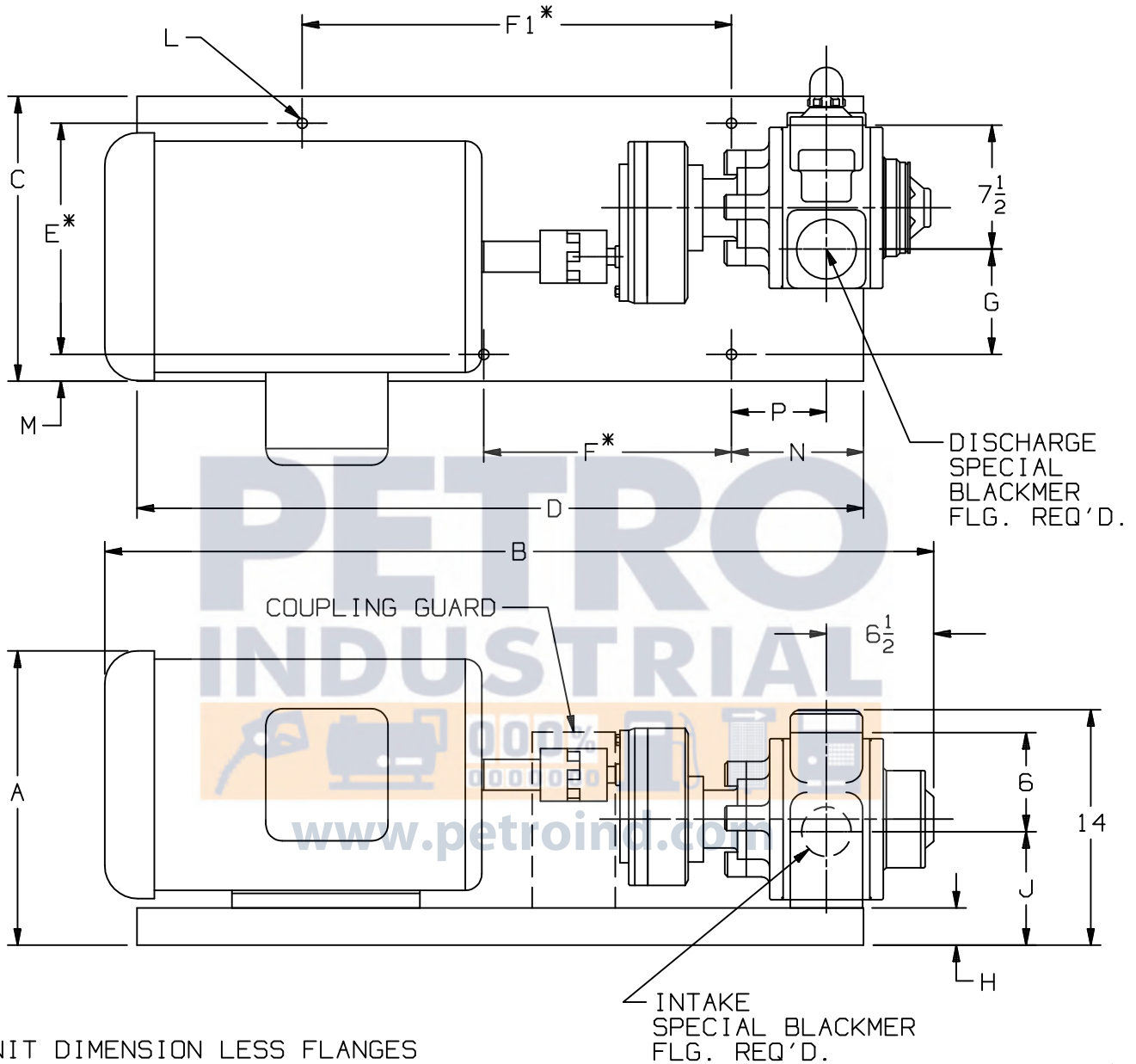
DIMENSIONS 101-107

Section 101
 Effective February 2003
 Replaces June 2002
 Page 3/3

TYPE
 GX
 LEFT HAND
 ROTATION

SIZE
 3E

UNIT
 STYLE
 GX



UNIT DIMENSION LESS FLANGES

* TOLERANCE $\pm \frac{1}{8}$

TOLERANCE ON OTHER DIMENSIONS $\pm \frac{1}{4}$

"A" DIMENSION LESS EYEBOLT

FLG. HT: 3" NPT-1 $\frac{1}{8}$

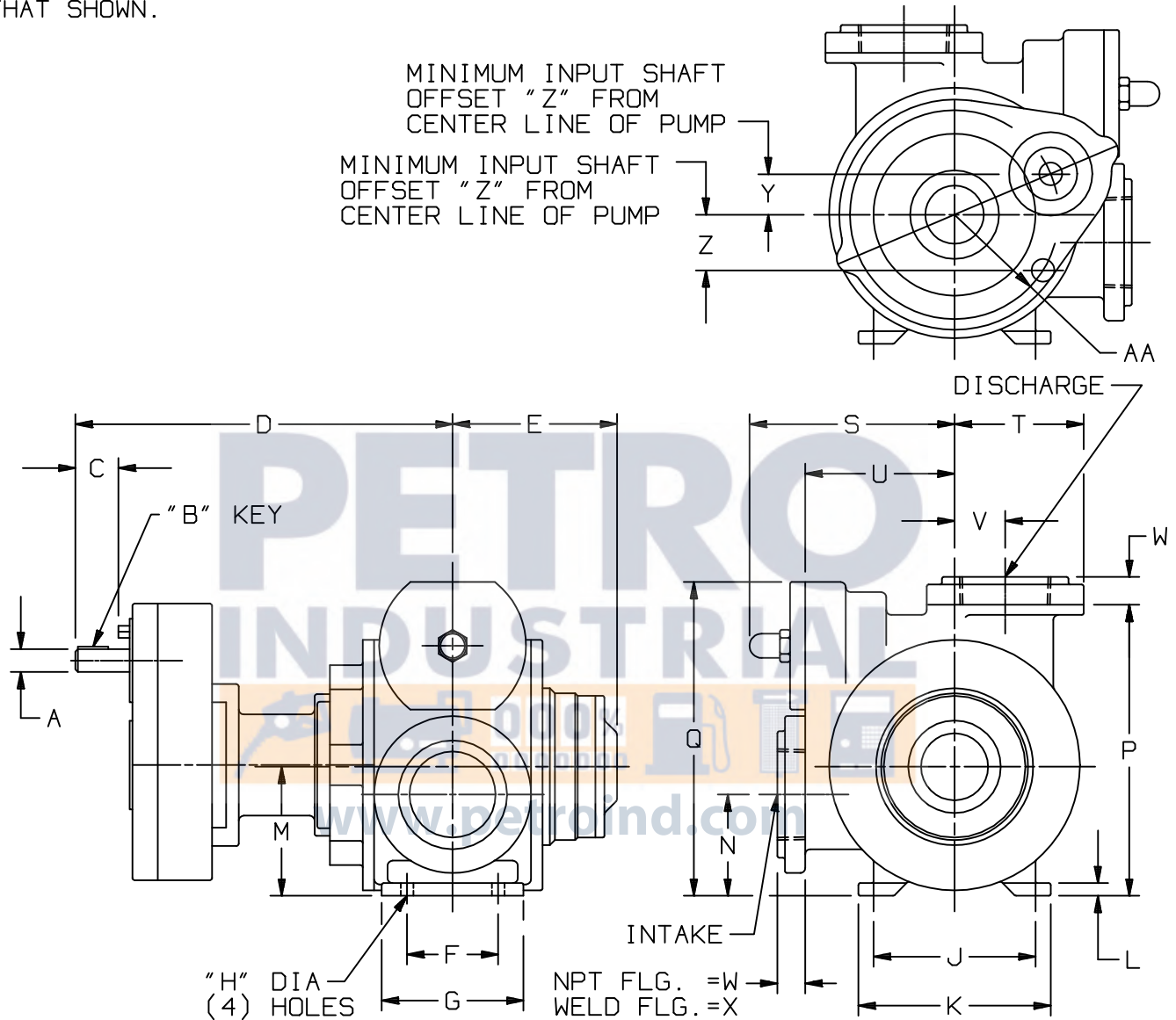
3" WELD-1 $\frac{3}{16}$

FRAME SIZE	MOTOR	UNITS	DIMENSIONS													
			A	B	C	D	E	F	F1	G	H	J	L	M	N	P
182T		901770	10 $\frac{7}{8}$	37 $\frac{3}{8}$	14 $\frac{3}{4}$	33	11 $\frac{1}{4}$	12	12	4 $\frac{7}{8}$	1 $\frac{3}{4}$	6 $\frac{3}{8}$	$\frac{7}{16}$	1 $\frac{3}{4}$	6	3 $\frac{1}{8}$
184T		901770	10 $\frac{7}{8}$	38 $\frac{3}{8}$	14 $\frac{3}{4}$	33	11 $\frac{1}{4}$	12	12	4 $\frac{7}{8}$	1 $\frac{3}{4}$	6 $\frac{3}{8}$	$\frac{7}{16}$	1 $\frac{3}{4}$	6	3 $\frac{1}{8}$
213T		901770	12 $\frac{3}{8}$	40 $\frac{7}{8}$	14 $\frac{3}{4}$	33	11 $\frac{1}{4}$	12	12	4 $\frac{7}{8}$	1 $\frac{3}{4}$	6 $\frac{3}{8}$	$\frac{7}{16}$	1 $\frac{3}{4}$	6	3 $\frac{1}{8}$
215T		901770	12 $\frac{3}{8}$	41 $\frac{5}{8}$	14 $\frac{3}{4}$	33	11 $\frac{1}{4}$	12	12	4 $\frac{7}{8}$	1 $\frac{3}{4}$	6 $\frac{3}{8}$	$\frac{7}{16}$	1 $\frac{3}{4}$	6	3 $\frac{1}{8}$
254T		901676	14 $\frac{3}{4}$	45 $\frac{1}{8}$	17 $\frac{1}{4}$	44	14	15	26	7	2 $\frac{1}{4}$	6 $\frac{7}{8}$	$\frac{5}{8}$	1 $\frac{5}{8}$	8	5 $\frac{1}{2}$
256T		901676	14 $\frac{3}{4}$	46 $\frac{7}{8}$	17 $\frac{1}{4}$	44	14	15	26	7	2 $\frac{1}{4}$	6 $\frac{7}{8}$	$\frac{5}{8}$	1 $\frac{5}{8}$	8	5 $\frac{1}{2}$

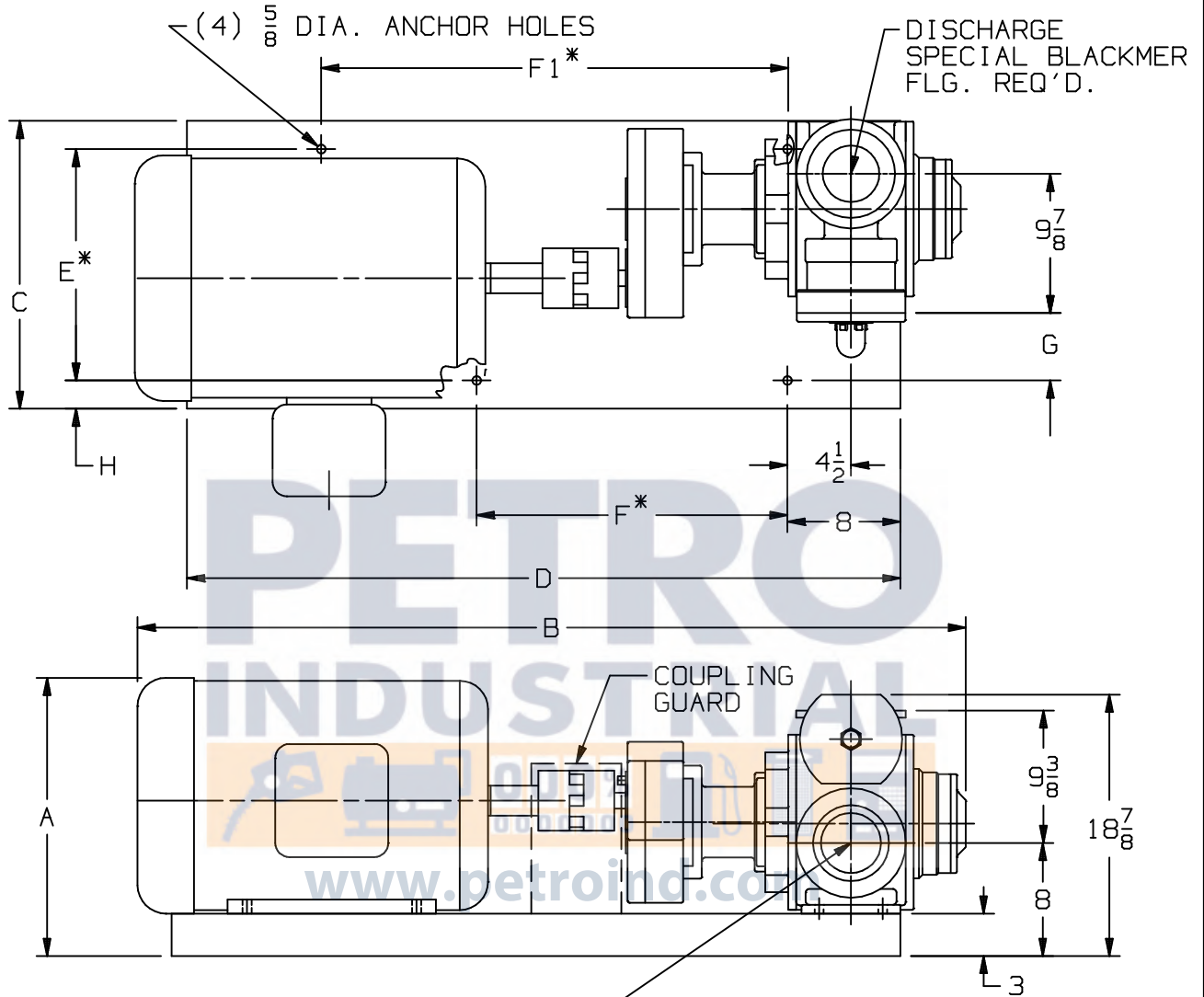
TYPE	SIZE	UNIT STYLE
GX	4B	PO

DIMENSIONS 101-108	
Section	101
Effective	February 2003
Replaces	October 1995
Page	1/3

RIGHT HAND ROTATION. FOR LEFT HAND ROTATION, SHAFT PROJECTION IS OPPOSITE THAT SHOWN.



MOTOR		UNITS	DIMENSIONS									
FRAME SIZE			A	B	C	D	E	F	G	H	J	K
		IN	1 1/8	1/4	2 1/8	18 5/8	8 1/8	4 1/2	7	5/8	8	9 1/2
		MM	28,6	6,4	54	473,1	206,4	114,3	177,8	15,9	203,2	241,3
			L	M	N	P	Q	R	S	T	U	V
		IN	5/8	6 3/8	5	14 3/8	15 1/2	—	10 1/8	6 3/8	7 3/8	2 1/2
		MM	15,9	177,8	127,0	365,1	393,7	—	257,2	161,9	187,3	63,5
			W	X	Y	Z	AA	BB	CC	DD		WEIGHT WITHOUT FLANGES
		IN	1 3/8	3	2	2 3/4	5 5/32	—	—	—	LBS	430
		MM	34,9	76,2	50,8	69,9	131	—	—	—	KG	195



UNIT DIMENSION LESS FLANGES

* TOLERANCE $\pm \frac{1}{8}$

TOLERANCE ON OTHER DIMENSIONS $\pm \frac{1}{4}$

"A" DIMENSION LESS EYEBOLT

MOTOR			DIMENSIONS											
FRAME SIZE		BASE NO.	A	B	C	D	E	F	F1	G	H	J	K	L
213T		901650	14 1/4	48 3/8	19 5/8	43	14	15	26	3	2 7/8			
215T		901650	14 1/4	48 3/8	19 5/8	43	14	15	26	3	2 7/8			
254T		901653	16 3/8	52 1/4	19 5/8	43	14	15	26	3	2 7/8			
256T		901653	16 3/8	54	19 5/8	43	14	15	26	3	2 7/8			
284T		901498	18	56	20 3/8	50 1/2	16 3/8	22	33	4 3/4	2			
286T		901498	18	57 1/2	20 3/8	50 1/2	16 3/8	22	33	4 3/4	2			
324T		901498	20	59 5/8	20 3/8	50 1/2	16 3/8	22	33	4 3/4	2			
326T		901498	20	61 1/8	20 3/8	50 1/2	16 3/8	22	33	4 3/4	2			

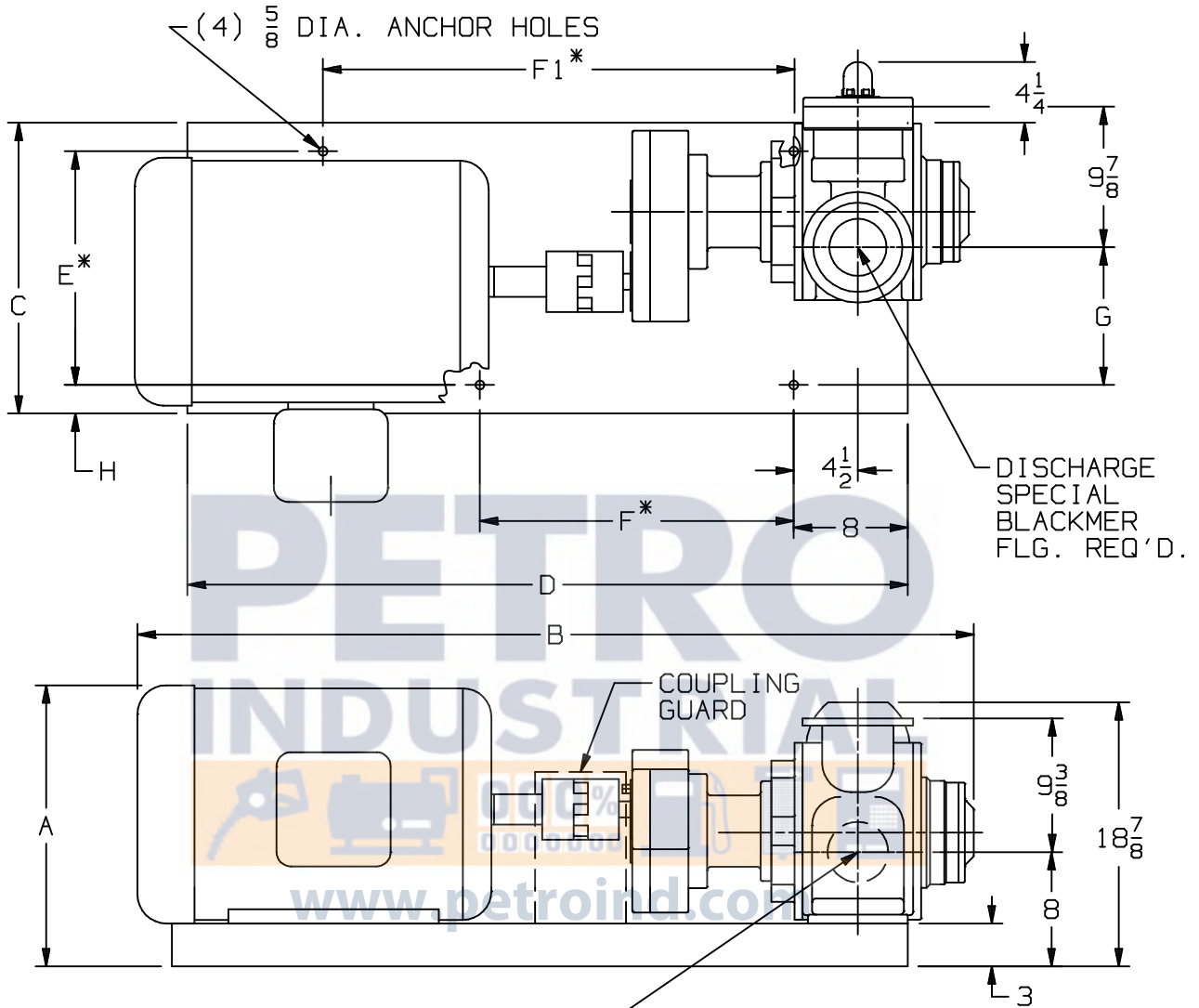
DIMENSIONS 101-108

Section 101
 Effective April 2003
 Replaces February 2003
 Page 3/3

TYPE
 GX
 LEFT HAND
 ROTATION

SIZE
 4B

UNIT
 STYLE
 GX



UNIT DIMENSION LESS FLANGES

* TOLERANCE $\pm \frac{1}{8}$

TOLERANCE ON OTHER DIMENSIONS $\pm \frac{1}{4}$

"A" DIMENSION LESS EYEBOLT

INTAKE
 SPECIAL BLACKMER FLG.
 REQ'D.

FLG. HT: 4" NPT-1 $\frac{3}{8}$

4" WELD-3

MOTOR			BASE NO.	DIMENSIONS											
FRAME SIZE				A	B	C	D	E	F	F1	G	H	J	K	L
213T			901650	14 1/4	48 3/8	19 5/8	43	14	15	26	7 7/8	2 7/8			
215T			901650	14 1/4	48 3/8	19 5/8	43	14	15	26	7 7/8	2 7/8			
254T			901653	16 3/8	52 1/4	19 5/8	43	14	15	26	7 7/8	2 7/8			
256T			901653	16 3/8	54	19 5/8	43	14	15	26	7 7/8	2 7/8			
284T			901498	18	56	20 3/8	50 1/2	16 3/8	22	33	9 5/8	2			
286T			901498	18	57 1/2	20 3/8	50 1/2	16 3/8	22	33	9 5/8	2			
324T			901498	20	59 5/8	20 3/8	50 1/2	16 3/8	22	33	9 5/8	2			
326T			901498	20	61 1/8	20 3/8	50 1/2	16 3/8	22	33	9 5/8	2			