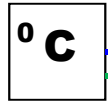


T5020 wiring Diagram. This shows all connections for Standard Tank Gauge set-up.

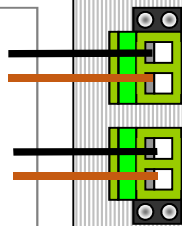
A12 , A14, A16 Sensors 2016 JUNE

VIEW FROM BACK OF CIRCUIT BOARD

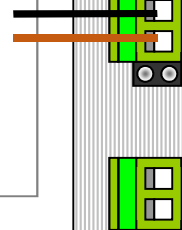
TEMPERATURE sensor input
From May 2016 Temperature Tank sensor "TP" is required for product measurement. This is a Thermistor Circuit and only OLE Sensors should be used



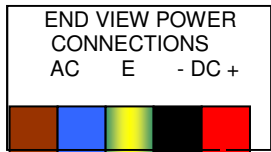
H Alarm is an input for a mechanical High or Low "B8" Alarm. Also used for "B2" Water bottom sensors (Fit Jumper for this Option)



B Alarm is an input for a mechanical float switch Bund or water Bottom Alarm. Set NC, (normally closed). (Fit Jumper for this Option) "B8"

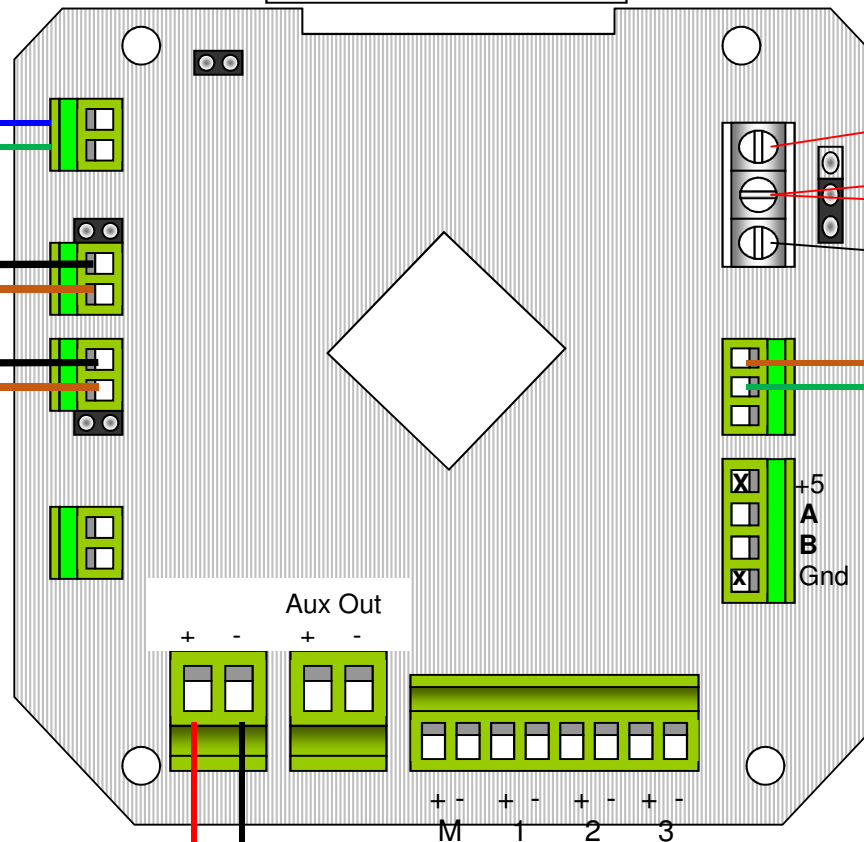


MAINS POWER SUPPLY.
Units are supplied with either 24vdc direct connection, or 100/240 Vac power supply.

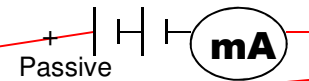


Power supply connections can be made by REMOVING the mounting bracket screws temporarily. UP to 6 T4020 Gauges can be powered from one power supply. T4020-EG

Optional 12-24vdc Client supplied power connection



OUTPUT Analogue 4-20 milliamp.
Passive = Externally Powered
Loop = Powered by T4020



Brown = +V

Green = SIG

For Standard Sensor

- A12 = 3 meters
- A14 = 5 meters
- A16 = 10 meters
- (white wire is not used)

See additional wiring diagram Eex.

Alarms. Outputs provide Supply voltage (12 or 24vdc) when activated.
M = Master Alarm, set 95% Rising, and can be acknowledged from the front panel.
 B (Bund or Water Bottom) alarm also acknowledged here.
 1 = 85% Rising (Same as M but not Acknowledgeable
 2 = 25% Falling.
 3 = 15% Falling as standard
 These are Factory set on request OR with the Configuration Kit / lead by the user.