

# PETRO INDUSTRIAL



petroind.com



## SOLENOID VALVE PETRO EX'D' RATED FLAMEPROOF SCR BSP

Brass or 316 SS Body Options

Item code: B55ED/S55ED-SUP1

Ideal for hazardous area environments. Carry the following approvals; Ex d I Mb, Ex d II T5 Gb, Ex tb IIIC T85 c Db IP66, IECEx SIM 13.0009.

### FEATURES:

- EX'D' Rated - Flameproof.
- Normally Closed - Power to Open.
- Viton seat.
- 0-10 BAR pressure range.
- Vacuum to 27"Hg.
- Media temperature range of -10°C to 40°C.
- Scr BSP.
- IP66 Weatherproof Rated.
- Pressure Rating AC Power - 0 - 10 bar.
- Pressure Rating DC Power - 0 - 7 bar.
- Temperature -10 to 40°C.
- Choice of Brass or 316 Stainless Steel Body.
- Viton Seals.
- Stainless Steel Electrical Housing.

# PETRO INDUSTRIAL



petroind.com



## BRASS RANGE:

Model	Port Size BSP	Orifice Ømm	CV	Media Pressure	Media Temperature
B55ED-3-4-*V	3/8	4	0.58	0 to 10 BAR	-10°C to 40°C
B55ED-3-6-*V		6	0.79	0 to 5 BAR	
B55ED-3-8-*V		8	0.97	0 to 2 BAR	
B55ED-4-6-*V	1/2	6	0.79	0 to 5 BAR	
B55ED-4-8-*V		8	0.97	0 to 2 BAR	
B55ED-3-15-*V	3/8	15	4.50	0 to 10 BAR	
B55ED-4-15-*V	1/2	15	4.50	0 to 10 BAR	
B55ED-5-20-*V	3/4	20	9.30	0 to 10 BAR	
B55ED-6-25-*V	1	25	13.2	0 to 10 BAR	
B55ED-7-35-*V	1 1/4	35	26.0	0 to 10 BAR	
B55ED-8-35-*V	1 1/2	35	26.0	0 to 10 BAR	
B55ED-9-50-*V	2	50	48.0	0 to 7 BAR	

## 316 STAINLESS STEEL RANGE:

Model	Port Size BSP	Orifice Ømm	CV	Media Pressure	Media Temperature
S55ED-3-4-*V	3/8	4	0.58	0 to 10 BAR	-10°C to 40°C
S55ED-3-6-*V		6	0.79	0 to 5 BAR	
S55ED-3-8-*V		8	0.97	0 to 2 BAR	
S55ED-4-6-*V	1/2	6	0.79	0 to 5 BAR	
S55ED-4-8-*V		8	0.97	0 to 2 BAR	
S55ED-3-15-*V	3/8	15	4.50	0 to 10 BAR	
S55ED-4-15-*V	1/2	15	4.50	0 to 10 BAR	
S55ED-5-20-*V	3/4	20	9.30	0 to 10 BAR	
S55ED-6-25-*V	1	25	13.2	0 to 10 BAR	
S55ED-7-35-*V	1 1/4	35	26.0	0 to 10 BAR	
S55ED-8-35-*V	1 1/2	35	26.0	0 to 10 BAR	
S55ED-9-50-*V	2	50	48.0	0 to 7 BAR	

\*Voltages available; 12vDC, 24vDC, 24vAC, 110vAC, 240vAC, 415vAC



Series FP

## SOLENOID HOUSING

Flameproof & (DIP) Dust Ignition Protection

This robust all Stainless Steel Solenoid Housing has been designed to suit a broad range of hazardous environments and applications. It is resistant to most of the common corrosive chemicals including seawater. This Housing will be suitable for underground mining applications when registered with the various state authorities.

### Technical Details

The enclosure is approved by "Standards Australia" certificate Aus Ex 02.2545X and complies to the following standards:

- Exd I/IIC TS Flameproof Enclosure AS2380.1-1989 & AS2380.2-1991.
- DIP A21TA TS Combustible Dust ASINZS 61241.1.1-1999.
- IP66 Weatherproof rating.

A terminal strip and earth tag permit electrical connection within the enclosure, removing the need for a separate approved junction box.

### Application

This housing can be fitted to a variety of different valve bodies.

<b>2 way:</b>	Brass	Series 855 Normally closed
	Stainless steel	Series S55 Normally closed
	High Pressure brass	Series 875 Normally closed
<b>3 way:</b>	Series 8107	Normally closed
	Series 8108	Normally open

### Electrical

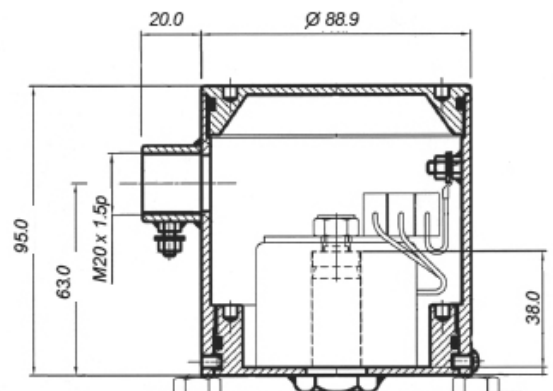
An approved cable gland has to be fitted to the M20 boss as part of the compliance approval. The cable entry position can be rotated 36(1) by loosening two socket screws at the base of the housing. A third tamper proof screw prevents total unscrewing of the housing.

### Coils

Continuously rated for temperature class T5 which is based on an ambient and medium temperature of 4(1)c.

### Voltage

12v and 24v DC  
 24v, 110v, 220v, 230v, 240v to suit 50Hz or 60Hz supply  
 120v (60Hz only)  
 415v (50Hz only)  
 Wattages vary with voltage and are available on request.



### Materials

Housing lid, body and base.	316L stainless steel
Operator tube.	304 stainless steel
Armature.	430F stainless steel
Shading ring.	Copper or Silver
Earth terminal, washer and nut.	316 stainless steel

### Mounting

The housing can be mounted in any attitude but is best when mounted upright as shown in the drawing provided. A special stainless steel pin spanner is available as a tamper-proof way to remove or replace the lid. Weight ...add 1.9 Kg to that of the valve.