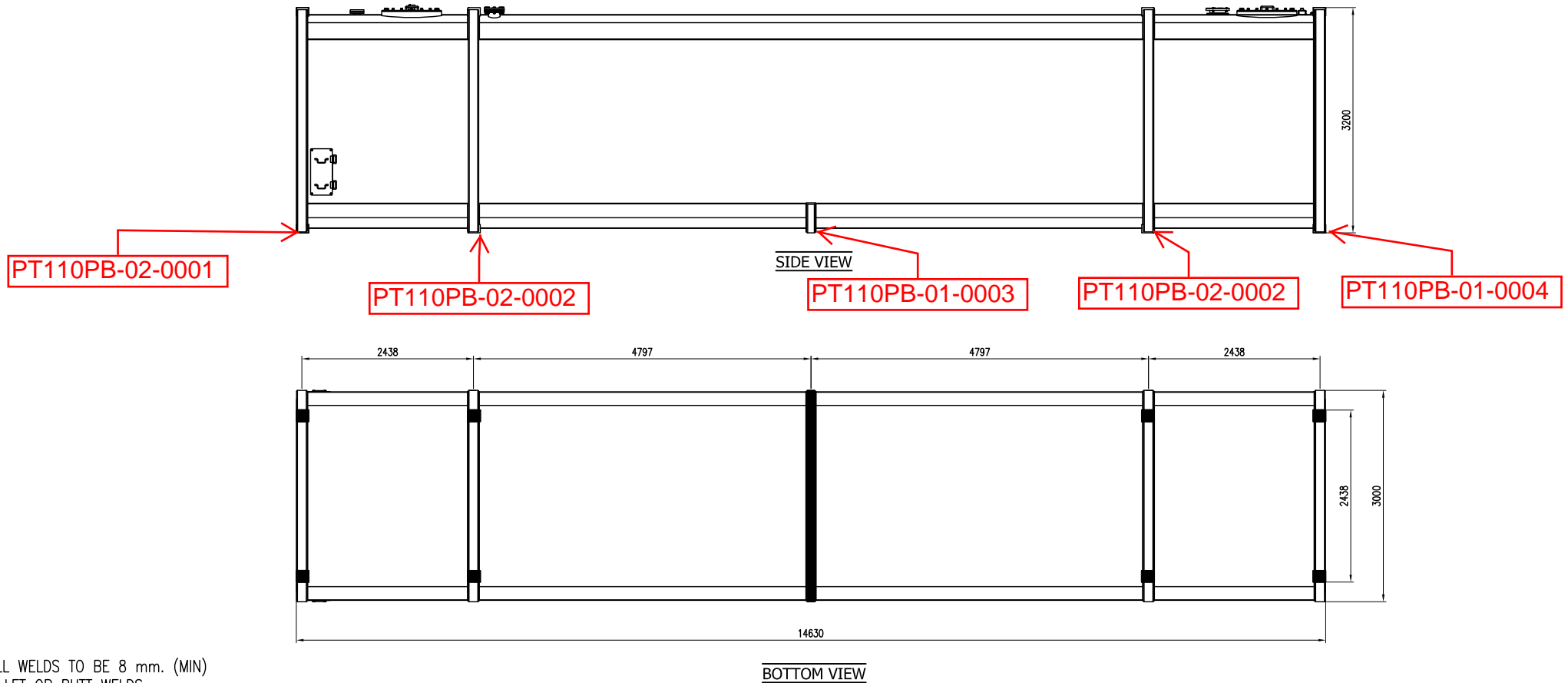



PT110PB FOOTING LAYOUT

DO NOT SCALE

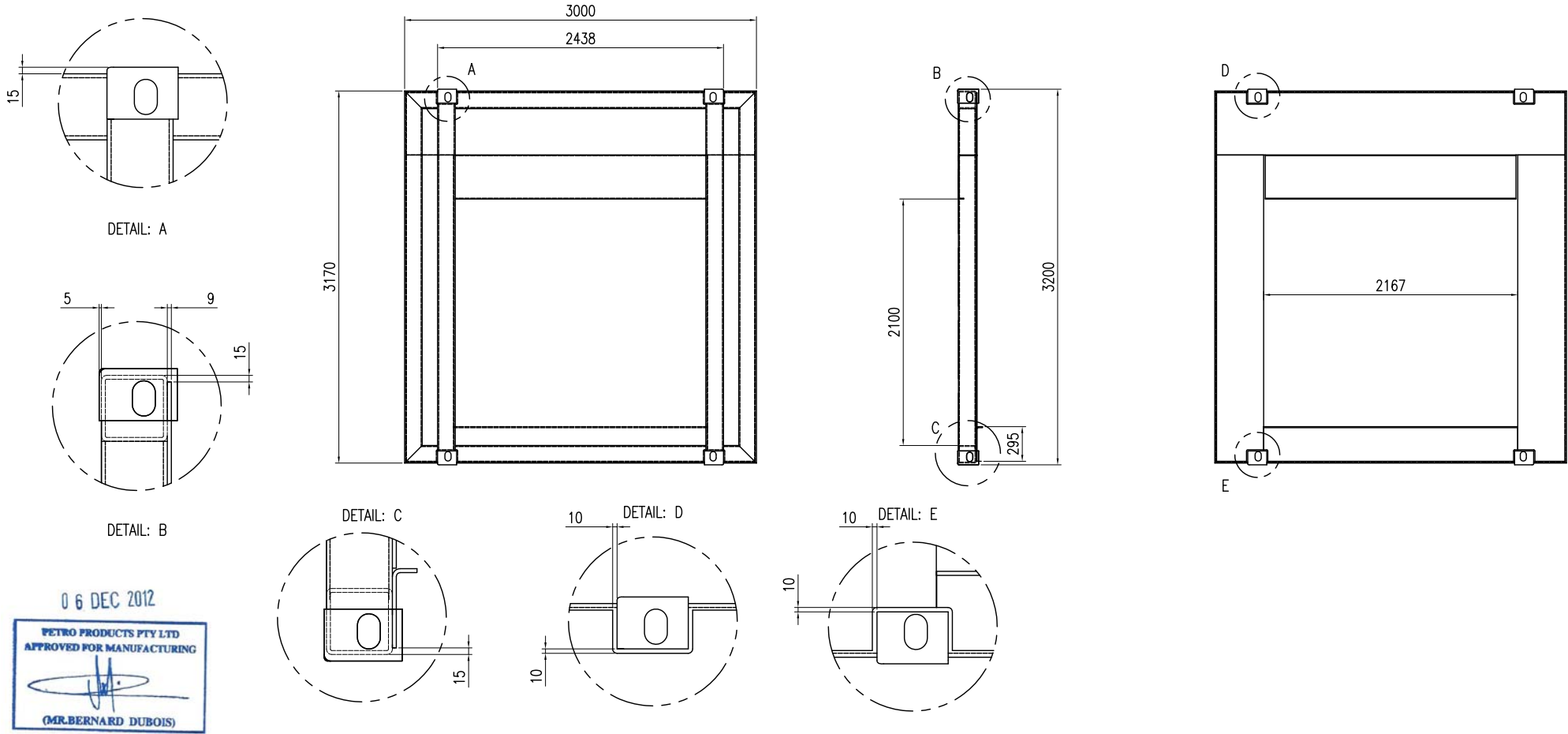


ALL WELDS TO BE 8 mm. (MIN)
 FILLET OR BUTT WELDS
 UNLESS STATED
 OTHERWISE
 ALL WELDS TO BE : AS1554
 INTERSTITIAL LEAKAGE TEST AT 35 KPA

TANK MUST BE SUPPORTED ON ALL POINTS

MATERIAL		TOLERANCES:	CK.	10/11/2012		TITLE			
		ALL DIMENSION IN MM	DESIGN/CHECKED:	DATE:			PT110PB FOOTING LAYOUT		
			AY.	10/11/2012					
			APPROVED:	DATE:					
			CONFIGURED:	DATE:	DRAWING NO:	PT110PB-00-0000			
					SCALE:	APPR MASS	SHEET: 1 OF 1	REV-00	A3

DO NOT SCALE



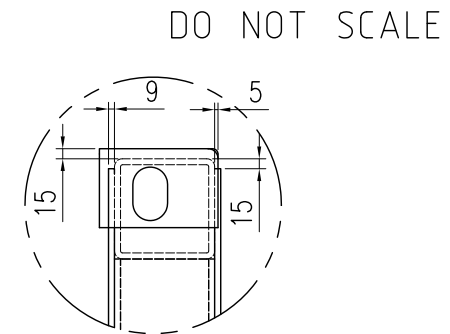
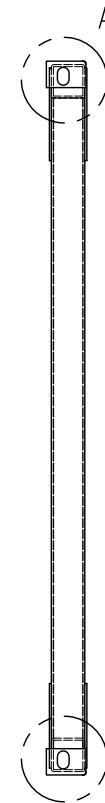
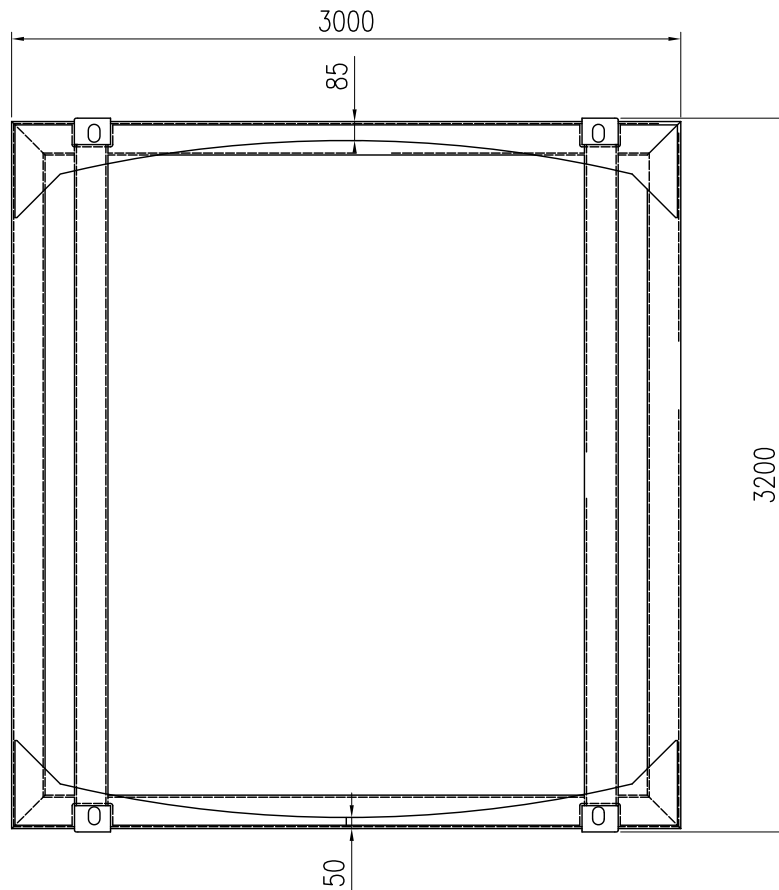
06 DEC 2012
 PETRO PRODUCTS PTY LTD
 APPROVED FOR MANUFACTURING
 (MR. BERNARD DUBOIS)

ALL WELDS TO BE 8 mm. (MIN)
 FILLET OR BUTT WELDS
 UNLESS STATED
 OTHERWISE
 ALL WELDS TO BE : AS1554
 INTERSTITIAL LEAKAGE TEST AT 35 KPA

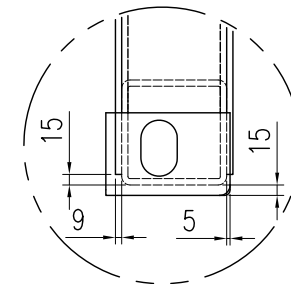
Qty = 1 PCS/SET

PART	FINISH	TOLERANCES: ALL DIMENSION IN MM	DRAW: CK.	DATE: 10/11/2012	TITLE PETRO INDUSTRIAL ROLLER DOOR FRAME ASSEMBLY
	MATERIAL			DESIGN/CHECKED: AY.	
		APPROVED:	DATE:	DRAWING NO: PT110-02-0001	
		CONFIGURED:	DATE:	SCALE: APPR MASS SHEET: OF REV-00	

A3



DETAIL: A



DETAIL: B

06 DEC 2012

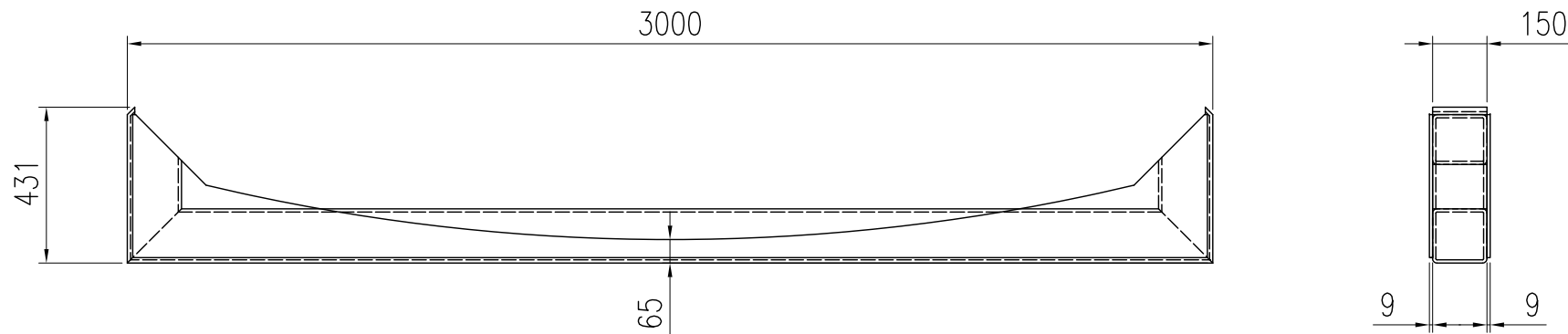


ALL WELDS TO BE 8 mm. (MIN)
 FILLET OR BUTT WELDS
 UNLESS STATED
 OTHERWISE
 ALL WELDS TO BE : AS1554
 INTERSTITIAL LEAKAGE TEST AT 35 KPA

Qty = 2 PCS/SET

PART	FINISH	TOLERANCES: ALL DIMENSION IN MM	DRAW: CK.	DATE: 10/11/2012		TITLE
			DESIGN/CHECKED: AY.	DATE: 10/11/2012		SUPPORT FRAME FOR 48"ASSEMBLY
MATERIAL			APPROVED:	DATE:		DRAWING NO: PT110-02-0002
			CONFIGURED:	DATE:		SCALE:

DO NOT SCALE



06 DEC 2012



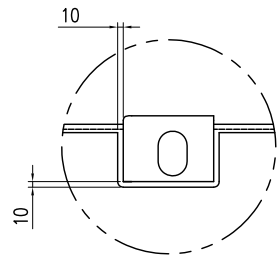
ALL WELDS TO BE 8 mm. (MIN)
 FILLET OR BUTT WELDS
 UNLESS STATED
 OTHERWISE
 ALL WELDS TO BE : AS1554
 INTERSTITIAL LEAKAGE TEST AT 35 KPA

Qty = 1 PCS/SET

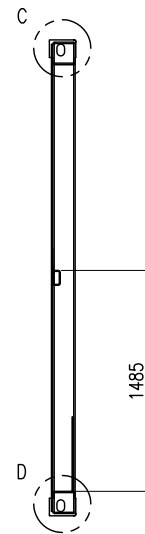
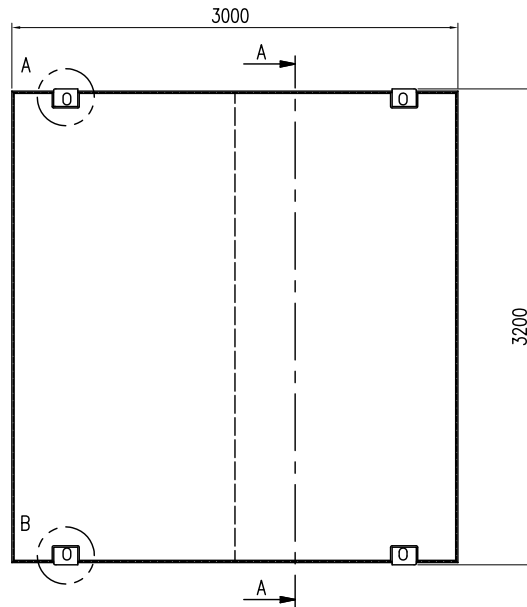
PART	FINISH	TOLERANCES: ALL DIMENSION IN MM	DRAW: CK.	DATE: 10/11/2012		TITLE
			DESIGN/CHECKED: AY.	DATE: 10/11/2012		MIDDLE FRAME ASSEMBLY
MATERIAL			APPROVED:	DATE:		DRAWING NO: PT110 -02-0003
			CONFIGURED:	DATE:		SCALE: APPR MASS SHEET: OF REV-00

A4

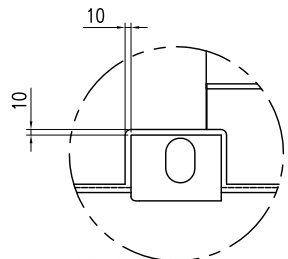
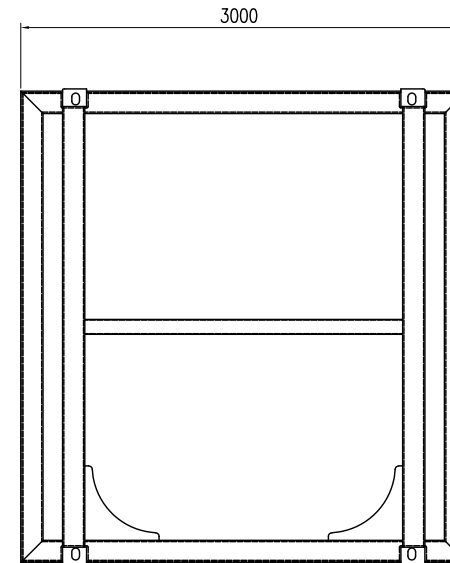
DO NOT SCALE



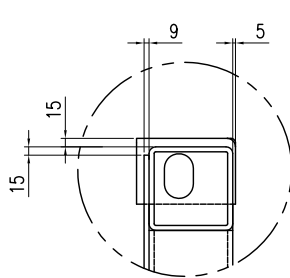
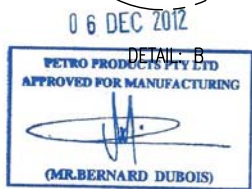
DETAIL: A



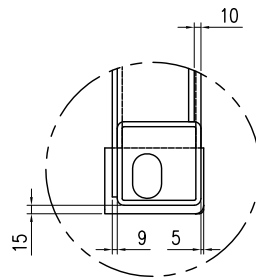
SECTION: A-A



DETAIL: B



DETAIL: C



DETAIL: D

Qty = 1 PCS/SET

ALL WELDS TO BE 8 mm. (MIN)
 FILLET OR BUTT WELDS
 UNLESS STATED
 OTHERWISE
 ALL WELDS TO BE : AS1554
 INTERSTITIAL LEAKAGE TEST AT 35 KPA

PART	FINISH	TOLERANCES: ALL DIMENSION IN MM	DRAW: CK.	DATE: 10/11/2012	TITLE PETRO INDUSTRIAL REAR FRAME ASSEMBLY
			DESIGN/CHECKED: AY.	DATE: 10/11/2012	
MATERIAL			APPROVED:	DATE:	DRAWING NO: PT110 -02-0004
			CONFIGURED:	DATE:	
				SCALE:	APPR MASS SHEET: OF REV-00

A3