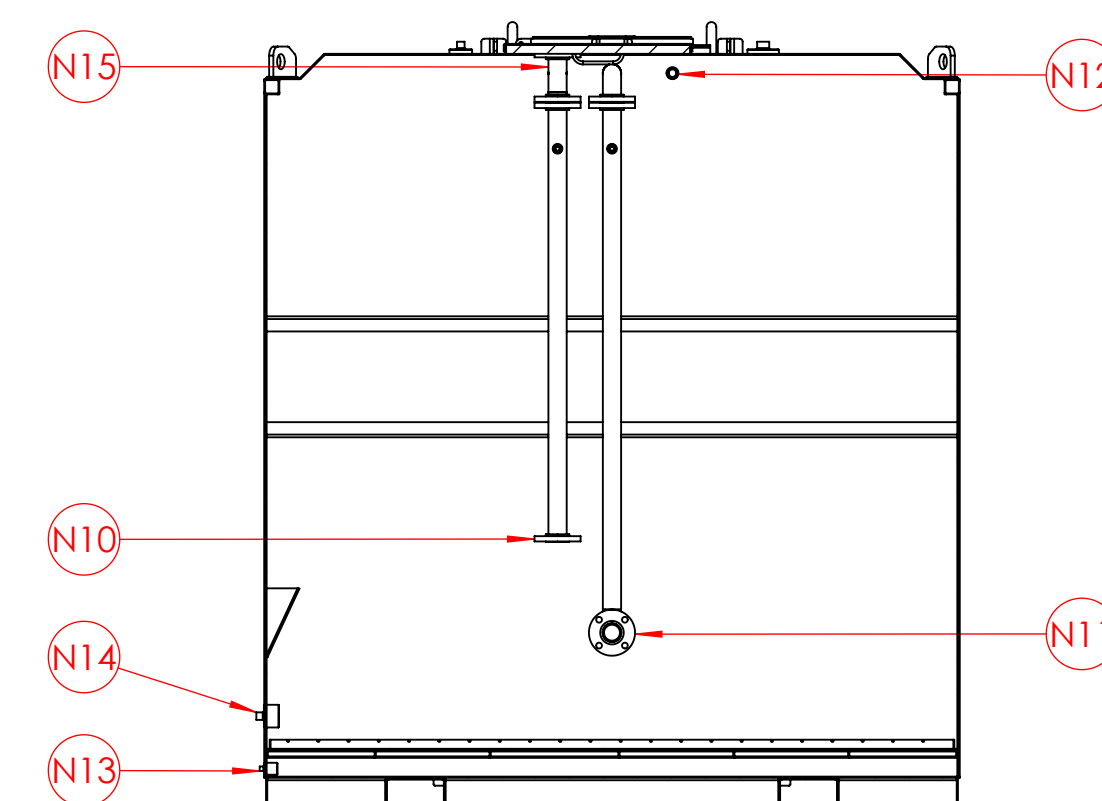
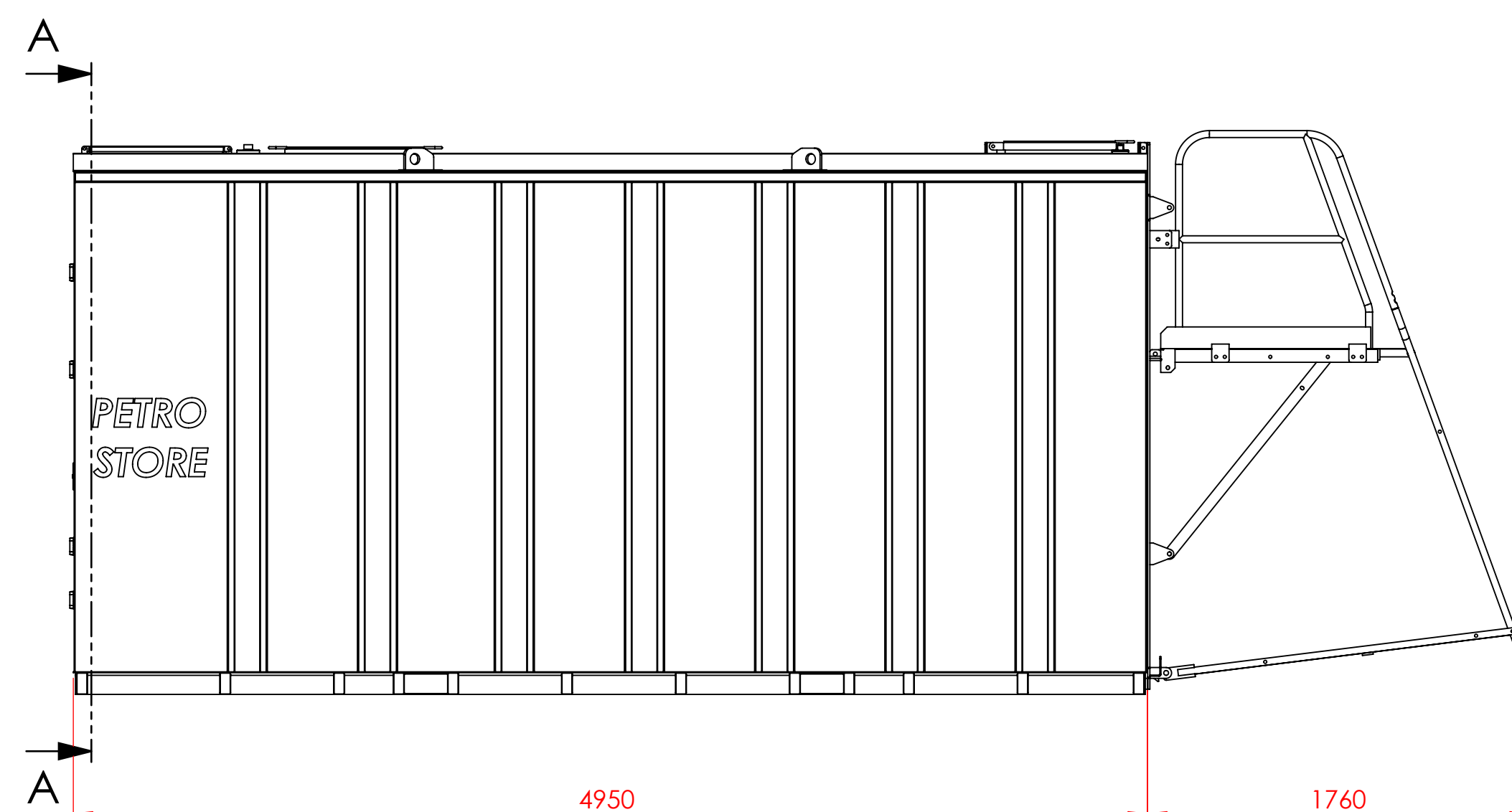
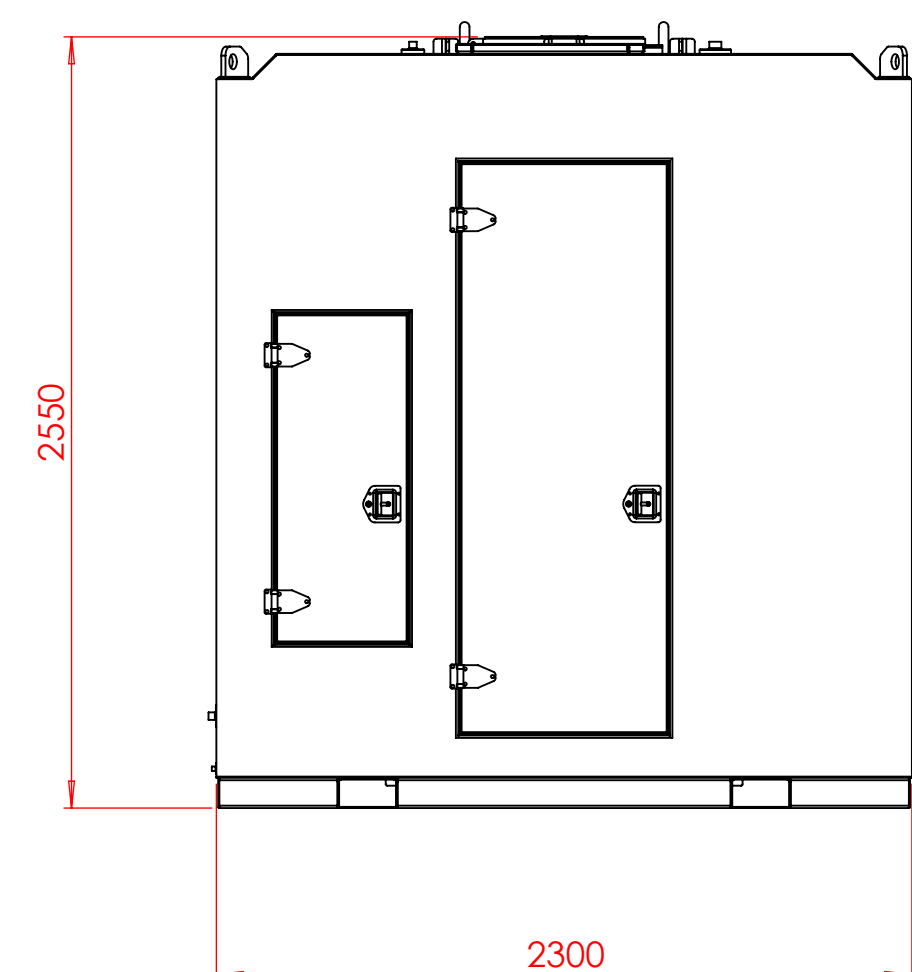


Nozzle Schedule		
Nozzle ID	Connection Type	Service
N1	DN50 - ISO4144 - BSP Socket	Spare (c/w 316SS plug)
N2	DN50 - ISO4144 - BSP Socket	Disptick
N3	DN50 - ISO4144 - BSP Socket	Interstitial dipstick
N4	DN50 - ISO4144 - BSP Socket	Spare (c/w 316SS plug)
N5	DN80 - ISO4144 - BSP Socket	Submersible pump socket
N6	DN50 - ISO4144 - BSP Socket	Interstitial vent
N7	DN50 - ISO4144 - BSP Socket	Tank vent (free-to-air)
N8	DN50 - ISO4144 - BSP Socket	Instrumentation (c/w 316SS plug)
N9	DN50 - ISO4144 - BSP Socket	Instrumentation (c/w 316SS plug)
N10	DN50 - ANSI 150 - Flange	Primary suction spool
N11	DN50 - ANSI 150 - Flange	Primary fill spool
N12	DN25 - ISO4144 - BSP Socket	De-watering/sludge
N13	DN25 - ISO4144 - BSP Socket	Drain Socket (c/w 316SS plug)
N14	DN50 - ISO4144 - BSP Socket	Wiring Socket (c/w 316SS plug)
N15	DN50 - ANSI 150 - Flange	Primary prime point
M1	Flanged (OD=650, ID=500)	Manway



SECTION A-A



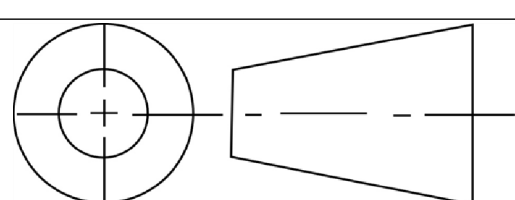
Tank Specifications	
Design code	AS1692, AS1940, AS1657
Built to	AS4100, AS1554
Plate thickness/material	6mm/4mm SS400
Pressure test	35kPa
External dimensions	4950mm x 2300mm x 2550mm
Gross Volume	22000 L
Safe Fill Level	20000 L
N.D.T	MPT/DPT
Tare Weight	4500 KG



COPYRIGHT NOTICE


This drawing remains property of Petro Industrial Pty Ltd
and is not intended for distribution

THIRD ANGLE PROJECTION



DRAWING SIZE: A1		
SCALE 1:25	DRAWING NUMBER: PS22 - GA Cover	REV.

[illegible]

TITLE: PS22 - GA Cover		THIRD ANGLE PROJECTION			
DRAWN BY:	CHECK DRW:	DRAWING SIZE: A1			
CLIENT:	PROJECT NO:	SCALE 1:25	DRAWING NUMBER: PS22 - GA Cover	REV.	