



## Electronic K900 PULSE METER

Item code: K900-CATA

Oval gear electronic flow meters in acetal resin for controlling the non commercial dispensing of low, medium and high viscosity fluids compatible with construction materials. Body with aluminium measuring chamber. Inbuilt suction filter. Free contact signal pulser (reed switch), single channel.



Oval Gears

### FEATURES:

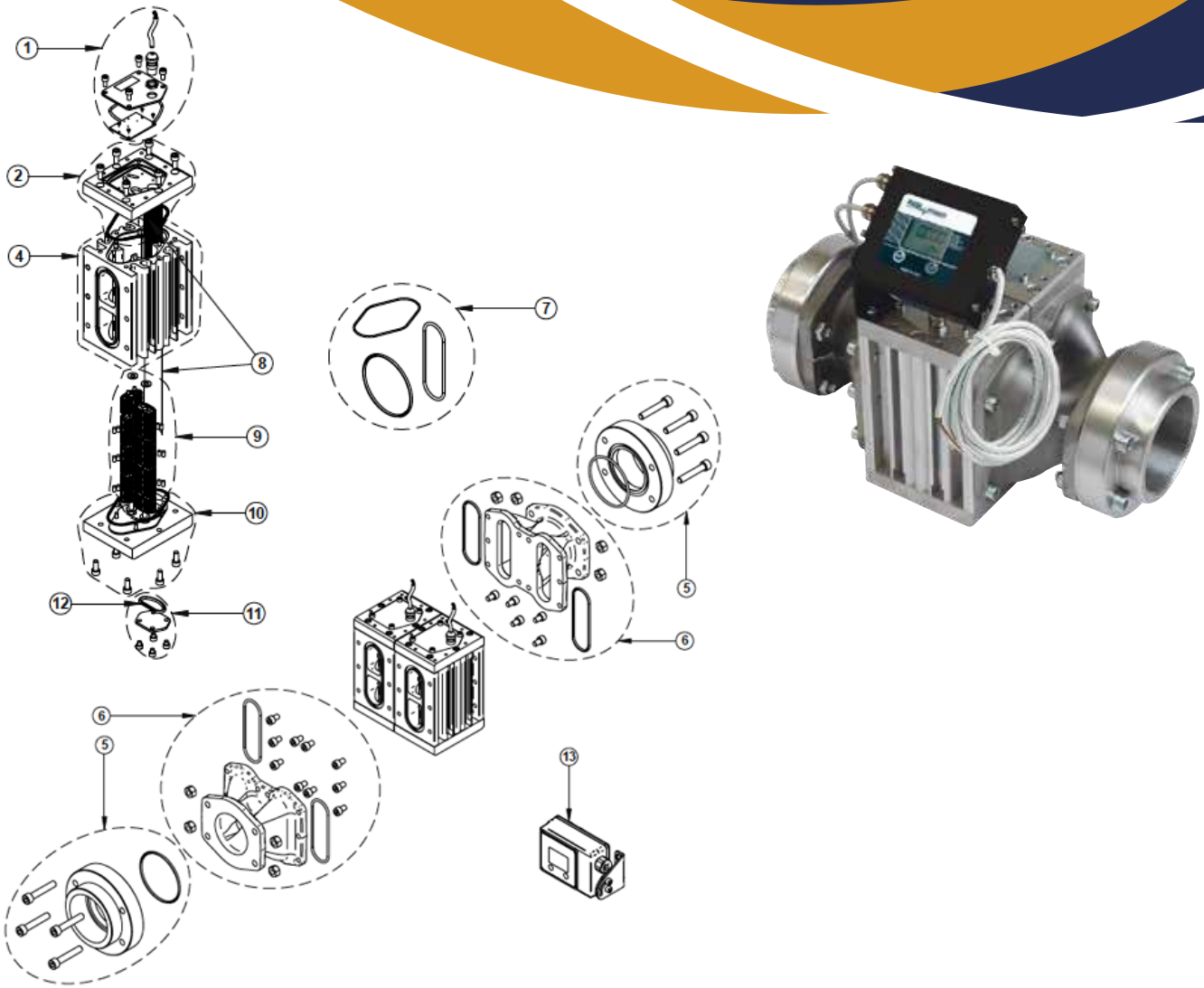
- 5 digit partial Total (h=11.5 mm) with floating point from 0.001 to 999.99.
- 8 digit non resettable Total (h=5 mm) from 1 to 99999999.
- Resettable Total. Flow rate indication.
- Repeatability 0.2 %.
- Loss of pressure <0.5 bar at maximum flow rate.
- Accuracy: +/- 0.5%.
- I/O 3".
- Fluid Viscosity: 5-5000 cSt.
- Max Fluid Temperature - +60°C.
- Weight: 12kg.
- Packaging: 400 x 290 x 200mm.

### TECHNICAL DATA:

Code	Description	Fluids (type)	Flow Rate		Pulser		Pressure		Battery 2 x 1,5V	Flange	Inlet Outlet BSP	Inlet Filter
			lpm	gpm	ppl	ppg	bar	psi				
F0049900B	K900	Bio-Diesel Diesel	50-500	13,2-132	-	-	20	284	Yes	Yes	3"	Yes
F0049903B	K900 GAL / NPT				-	-						
F0049902B	K900 Pulser				10	38						

Upon request available in NPT version.

Display power supply 4-12 Vdc, 1.2 Amp. Type of output signal: open collector max 50 V, 1.2 Amp, single channel.



## SPARE PARTS LIST COD. F0049900A K900 METER 3IN BSP

Pos.	Material Code	Description	Qty	UM
0001	R13823000	KIT COVER PULSER CARD K700/K900	1	PC
0002	R13824000	KIT CARD SLOT COVER K700/900 PULSER	1	PC
0004	R13825000	KIT METER BODY K700/K900 w/PINS	1	PC
0005	R11423000	KIT FLANGE K900 3in GAS	2	PC
0006	R11424000	KIT MANIFOLD K900	2	PC
0007	R13828000	KIT O-RINGS K700/K900 PULSER	2	PC
0008	R13829000	KIT FILTERS K700/K900 PULSER	1	PC
0009	R13830000	KIT GEARS COMPLETE W/MAGNETS and PINS	1	PC
0010	R13831000	KIT COVER K700/K900 PULSER	1	PC
0011	R13832000	KIT COVER 46x36 Thick.=3 FILTER ACCESS	1	PC
0012	R10431000	O-RING 4106 (D.26,57 S.3,53)	1	PC
0013	R1146400A	KIT K900 DISPLAY WITHOUT PULS OUT	1	PC