

# PETRO INDUSTRIAL



petroind.com



SSM 2018

## PIUSI FLUIDS SELF SERVICE MANAGEMENT 2018

Item code: F00773010 (USB)

F00773210 (WEB)

The new Self Service Management 2018 interface answers once more to the needs you've always had. But better. More intuitive, and more flexible. What PIUSI offers you is the possibility of continuing to work with the Self Service Management 1.0 range, but giving you more potential and more efficiency.

### SSM 2018 SYSTEM:

#### DISPENSING DEVICE RANGE



#### DATA TRANSFER

LAN CONNECTION

Global

WI-FI CONNECTION

Connection

MANAGER KEY

Devices

USB CONVERTER

#### SOFTWARE

ADMINISTER THE SITE

Managing

PROCESS THE REPORTS

Configuring

CONFIGURE SSM 2018



# PETRO INDUSTRIAL



petroind.com



Self Service Management 2018 dialogues with the Self Service 1.0 dispensing devices.

## High-performance instruments featuring:



Local memory



PC interface  
for data  
management



Multiuser control  
panel for user  
identification



Dispensing  
operation  
storage



Dispensing  
quantity  
preselection



Consumption  
monitoring

## HARDWARE DEVICES:



### SELF SERVICE MC

- Up to 90 l/min.
- Water filter.
- Manages 80 users.



### SELF SERVICE FM

- Up to 90 l/min.
- Printer.
- OCIO level indicator.
- Water filter.
- Manages 120 users.



### CUBE 70 MC

- Up to 70 l/min.
- Manages 120 users.
- Also in DC version.



### MC BOX

- Manages 120 users.
- Also in DC version.

# PETRO INDUSTRIAL



petroind.com



## DATA TRANSFER:

The PW-LAN, PW-WiFi, Manager Key (red) and PW 14 are the four connection methods through which your devices can dialogue with Self Service Management 2018. Four convenient tools for transferring the data on your fuel dispensers to your new software.



### PW-LAN

A network card that allows the RS485 signal to be converted for connection to a LAN, through a simple and intuitive interface.



### PW-WIFI

A Wi-Fi network card that allows the RS485 signal to be converted for connection to an existing Wi-Fi network.



### MAGNETIC KEYS



USB Key Reader



Red Manager Key

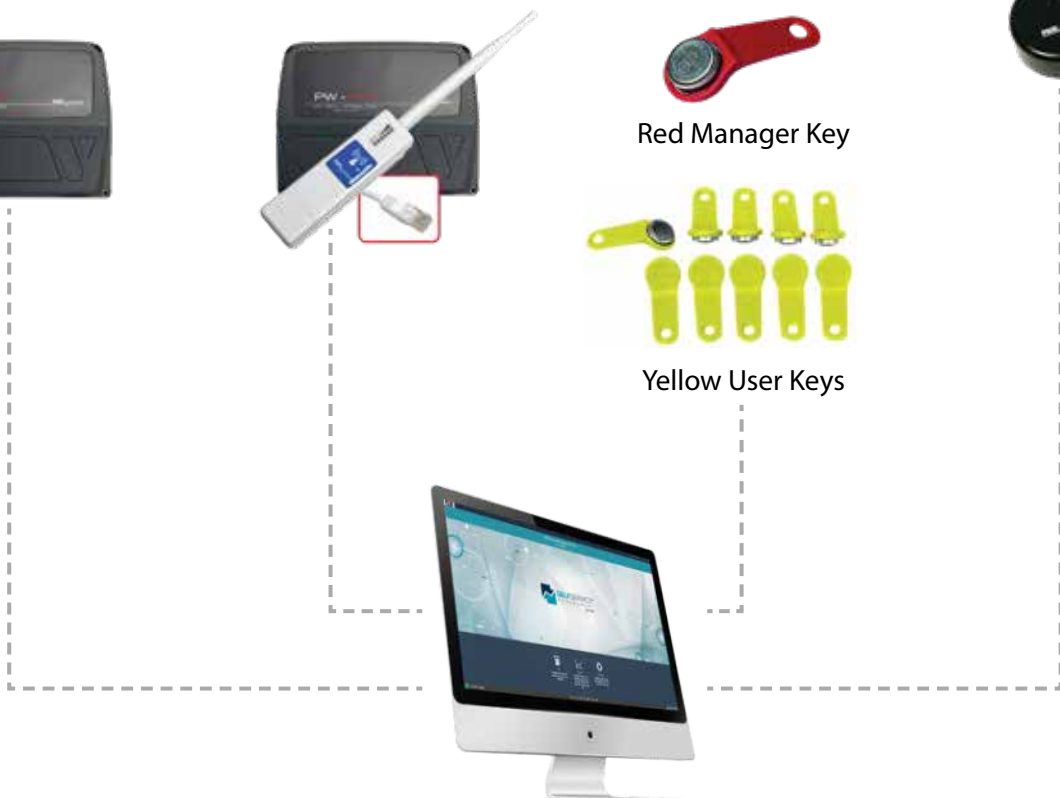


Yellow User Keys



### PW 14

Connection via RS485 cable with USB converter.



# PETRO INDUSTRIAL



petroind.com



## CONFIGURE

Assign the necessary parameters to your devices.

## MANAGE

Select or delete the device from your site.

## SOFTWARE – SITE:

In the "Site" section you can enter every parameter useful for identifying your devices. Conveniently enter the name of the device through a free field, the serial number of your fuel dispenser and select the family of devices it belongs to.

- Detailed icons that illustrate your devices so they can be recognised at first glance.
- Complete overview of your installed devices.
- Unique code to identify the newly configured device.
- Coloured bands that describe and advise of the state of activity of the devices.

## SSM 2018 OPTIONS

Self Service Management 2018 is available with a single licence type and can be purchased in two ways:

- The kit with USB key allows the software to be used with the key connected to the PC.
- The kit with web download allows the software to be downloaded from the piusi.com portal.

Get on with your job every day more accurately, conveniently and safely with the fuel dispensers and control panels of the 1.0 range.

## MINIMUM SYSTEM REQUIREMENTS

- Intel® Pentium® 4 or AMD Athlon® 64 processor (2 GHz or faster).
- Microsoft® Windows® Vista with Service Pack 2, Microsoft® Windows® 7 with Service Pack 1, Windows 8, Windows 8.1 or Windows 10.
- 2 GB of RAM.
- 20 GB of available hard-disk space (cannot install on removable flash storage devices).
- 1280 x 700 display.
- Microsoft® SQL 2012 R2 Service Pack 2 Express (included).
- Internet connection and registration are necessary for required software activation (only for Web Edition), membership validation, software updates and access to online services.

# PETRO INDUSTRIAL



petroind.com



## SOFTWARE – REPORT:

The new interface demonstrates its new edge in the “Report” section: an extremely convenient dialogue window allows you to set the parameters that interest you and read reports in the order you prefer.

- Pop-up parameter selection window.
- Calendar for selecting the period of interest.
- Full-screen, clear, detailed graphics.
- Ability to export data to .pdf, .xlsx or .txt.



**CHOOSE**  
the type of grouping to  
view in the results.

**SELECT**  
the dates, the devices  
and the drivers for which  
you want reports.

**EXPORT**  
data conveniently in  
your preferred file format.

# PETRO INDUSTRIAL



petroind.com



## SOFTWARE – SETTINGS:

From the “Settings” section you can configure the characteristics of your software to better meet your requirements. In addition to standards settings such as language, units of measurements and system preferences, here you can also enter the site owner details and define the data backup methods.

But above all you can choose the connection type through which Self Service Management 2018 will dialogue with your devices.

- Clear, simple icons, to make everything more intuitive.
- Overview of functions of the menu options.
- Selection of the global connection between software and devices.



### ASSIGN

the most appropriate account type to each user.



### COMMUNICATE

through the manager key, PW 14, PW LAN or PW WIFI.

# PETRO INDUSTRIAL



petroind.com



## SOFTWARE – SETTINGS:

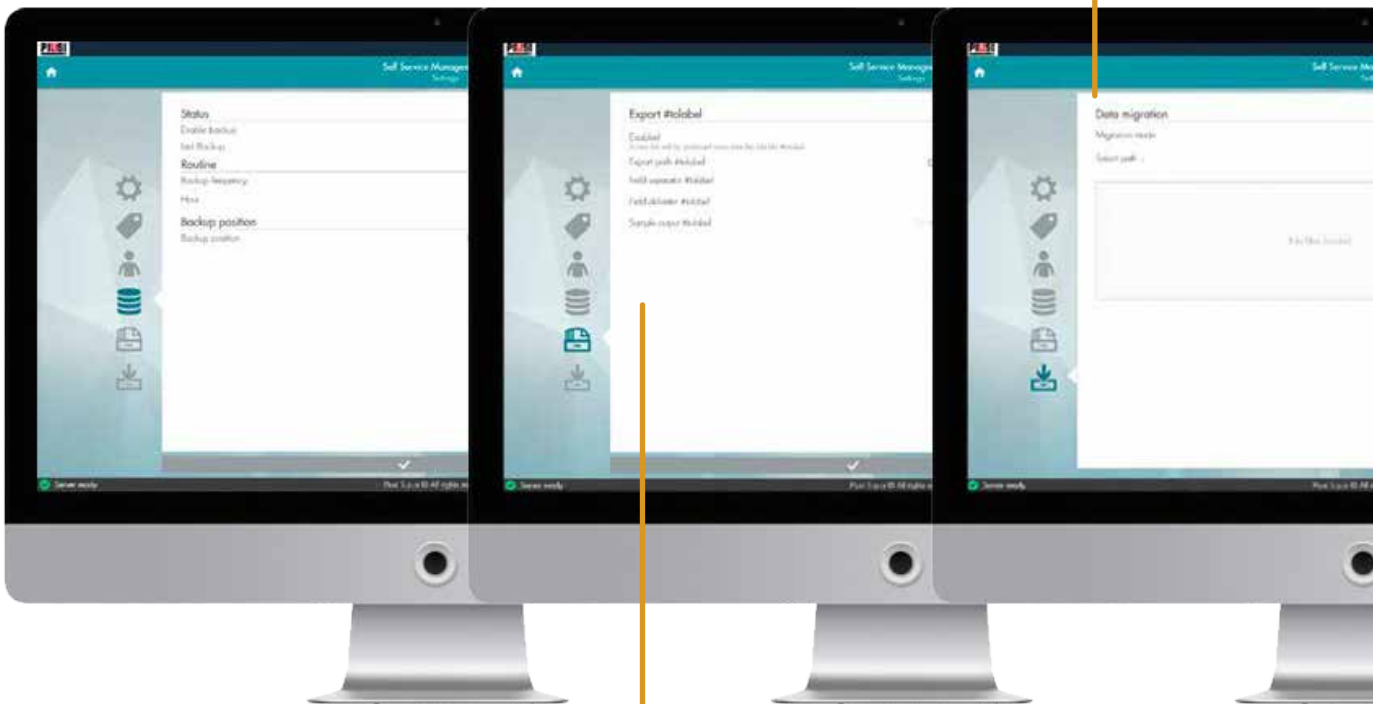
With Self Service Management 2018, not only do you not waste time, naturally you don't lose even a single data item from before the new software is installed either.

Self Service Management 2018 gives you the possibility of transferring your old data conveniently and quickly and combining it with the new data. You can also export the data from your dispensing operations automatically, just by activating the function.

Select and load the data generated by your previous Self Service Management to the new software

- Enable or disable automatic export of dispensing operations to .csv file.
- and select your preferred path for saving the files.

**COMBINE**  
the data from the previous software with the new Self Service Management 2018.



**EXPORT**  
the data on dispensing operations.

# PETRO INDUSTRIAL



petroind.com











## RANGE OF HARDWARE:

	Code	Description	Fluids	Users	Flow-Rate		Voltage		
					l/min	gpm	AC V./Hz DC Volt	Power Watt	Amp. max.
<b>SELF SERVICE MC</b>									
	F0073801C	SELF SERVICE 70 MC F	Diesel	80	70	18	230/50	900	4,2
	F0074101C	SELF SERVICE 100 MC F			90	24		1150	5,7
	F00738060	SELF SERVICE 70 MC F • printer			70	18		900	4,2
	F00738B0C	SELF SERVICE 70 MC • tank			70	18		900	4,2
	F00741B0C	SELF SERVICE 100 MC • tank			90	24		1150	5,7
<b>SELF SERVICE FM</b>									
	F0073900B	SELF SERVICE 70 FM	Diesel	120	70	18	230/50	550	3,3
	F0074200B	SELF SERVICE 100 FM			90	24		1150	5,7
	F00739B0B	SELF SERVICE 70 FM • tank			70	18		550	3,3
	F00742B0B	SELF SERVICE 100 FM • tank			90	24		1150	5,7
<b>CUBE 70 MC</b>									
	F0059400C	CUBE 70 MC	Diesel	50	70	18	230/50	900	4,2
	F0059413B	CUBE 70 MC • DC 12 V			56	15	12	300	35
	F0059414B	CUBE 70 MC • DC 24 V			70	18	24	420	25
	F0059415B	CUBE 70 MC • 120 UT		120	70	18	230/50	550	3,3
	F00594220	CUBE 70 MC • 12 V - 120 UT			56	15	12	300	35
<b>MC BOX</b>									
	F1398000C	MC BOX • ANY FLUIDS	Any	80	-	-	230/50	35	6,5
	F1398003C	MC BOX • ANY FLUIDS 120 V			-	-	120/60		
	F1398005B	MC BOX • ANY FLUIDS			-	-	230/50		
	F1398006B	MC BOX • ADBLUE®	Urea	120	-	-	230/50	10	50
	F1398001B	MC BOX • 12 V	Any		-	-	12		
	F1398002B	MC BOX • 24 V			-	-	24		





## ACCESSORIES:

	Code	Description
	F12262010	KIT KEY READER
	F13292000	PW 14
	F1271004A	PW-WIFI
	F12710050	PW-LAN
	F15904000	USER KEY (yellow key • 10 pcs)
	F12496000	MANAGER KEY (red key • 1 pc)
	F1270800C	PEDESTAL (for CUBE 70 MC)
	R12737000	KIT WALL SUPPORT (for CUBE 70 MC)