

PETRO INDUSTRIAL



petroind.com



240V AC

CUBE 90 DIESEL PUMP

Item code: F00592000-CATA

The Piusi Cube 90 Cabinet Style diesel transfer pump has been developed to have a higher flow and is therefore a 90lpm version of the industry renowned Piusi Cube 56 & Cube 70 Fuel Dispensers.

FEATURES:

- Diesel fuel dispenser commercial use.
- Sturdy structure designed for different applications: can be fixed to walls, tanks cisterns, drums, special pedestals.
- Self-priming vane pump fitted with bypass, installed on anti-vibration supports.
- Mechanical seal. Induction motor fitted with thermal motor overload protection.
- Nutating-disk displacement flow meter with mechanical readout system - Piusi K44.
- 4m of 1" id diesel fuel hose.
- 90lpm at pump flow rate – in 110V or 230V AC.
- Automatic nozzle with swivel connection - Piusi A120.
- Integrated nozzle holder with stop/start pump lever.
- Intake mesh filter.
- Power 700W - 4.9 amp.
- Pump Model used Panther 90.
- Meter Model Used - K44.
- Inlet 1" (DN25) Female BSP.

PRODUCT RANGE:

Code	Description	Flow Rate		Voltage			Pump mod.	Meter mod.	Nozzle type	Hose		H ₂ O Filter	Inlet BSP
		Lpm	Gpm	AC V./Hz DC Volt	Power Watt	Amp max.				m	Ø		
F00592000	Cube 90/44	90	23,8	230/50	700	4,9	Panth 90	K44	A120	4	1"	No	1"

DIMENSIONS: (without Pedestal)

Width	Depth	Height	Weight	Packaging (mm)	Height (with Pedestal)
378mm	429,5mm	297mm	21kg	400 x 400 x 460	1325mm

PETRO INDUSTRIAL



petroind.com



ON REQUEST:



Water Captor



PIUSI Drum Connector:
Code: F17163000



2" Quick Coupling
Code: R08930000



Pedestal
Code: F1270800C



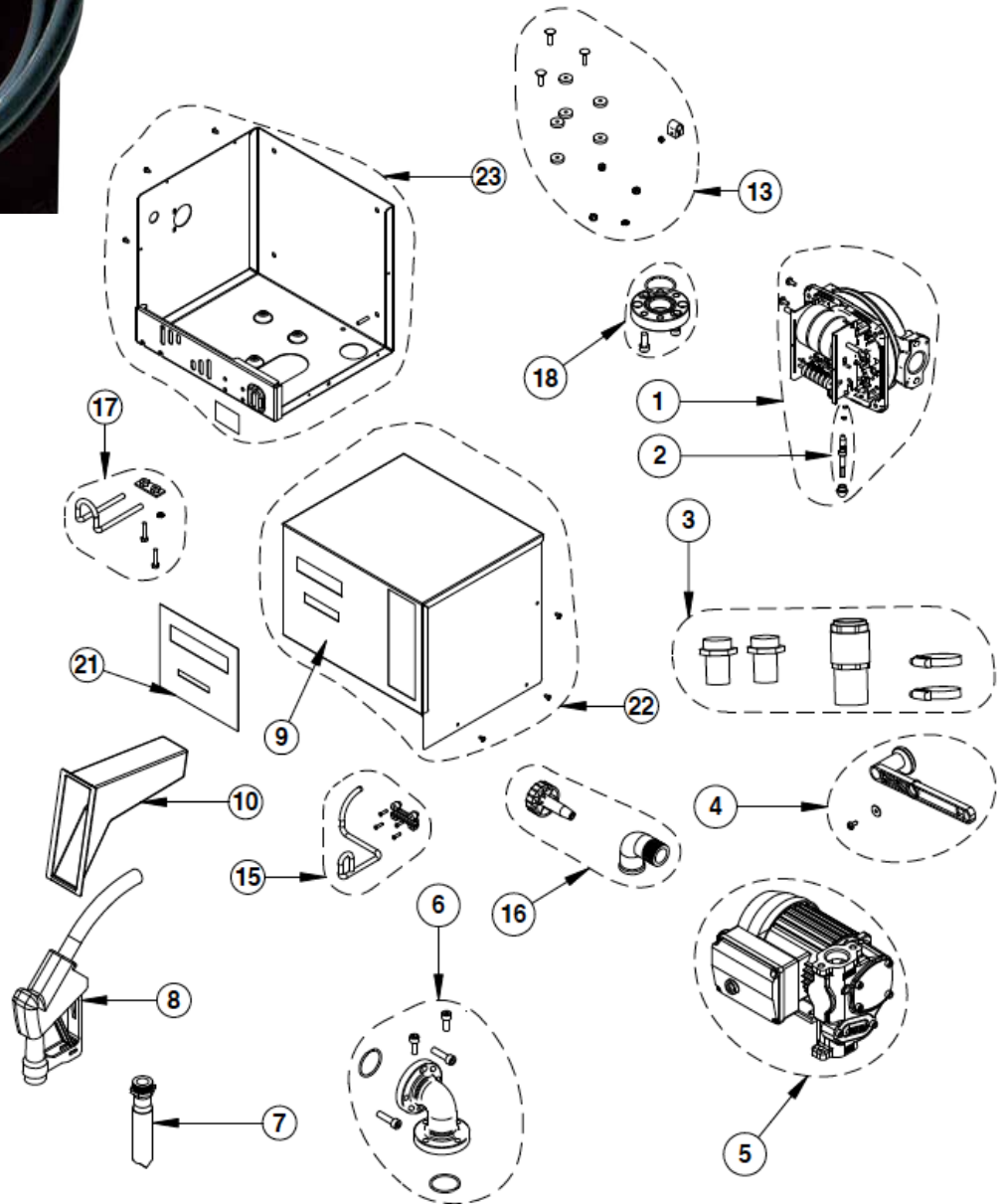
Kit Wall / Tank Support – Code: R12737000



PETRO INDUSTRIAL



petroind.com





SPARE PARTS LIST COD. F00592000 CUBE 90/44 230V/50HZ

Pos.	Material Code	Description	Qty	UM
0001	R18205000	KIT METER K44 FOR CUBE	1	PC
0002	R12717000	KIT BY-PASS SCREW+OR K33/K44 CUBE	1	PC
0004	R10611800A	LEVER FIXING SYSTEM CUBE MC, KIT	1	PC
0005	R20030000	KIT PUMPING UNIT CUBE 90	1	PC
0006	R10824000	KIT FLANGED + ELBOW + OR + SCREW	1	PC
0007	F08977000	DIESEL HOSE 025 L – 4m CRIMPED 1" x 1"	1	PC
0008	F00610020	AUTOMATIC NOZZLE 120 1in F BLACK	1	PC
0010	R0873500B	NOZZLE SEAT CUBE 50	1	PC
0013	R12723000	KIT PUMP FIXING CUBE 70/33	1	PC
0015	R1270000A	KIT LEVER NOZZLE CUBE 56	1	PC
0016	R12634000	KIT KNOB + ELBOW	1	PC
0017	R12701000	KIT HOSE SUPPORT CUBE 56	1	PC
0018	R09180000	FLANGE KIT 1" BSP	1	PC
0021	R20029000	LABEL CUBE 90/K44	1	PC
0022	R14921000	KIT COVER CUBE 70/56 RAL 5015	1	PC
0023	R14920000	KIT BASE + SIDE CUBE 70/56 RAL 5015	1	PC

SPARE PARTS LIST COD. R20030000 KIT PUMPING UNIT CUBE 90

Pos.	Material Code	Description	Qty	UM
0010	R10361000	CHAMBER COVER KIT	1	PC
0020	R11461000	CHAMBER COVER GASKET KIT	1	PC
0030	R13282000	KIT ROTOR w/KEY FOR PANTHER AC/DC	1	PC
0040	R11737000	MOTOR SHAFT SEAL KIT PANTHER 56/72	1	PC
0050	R15798000	FILTER COVER KIT	1	PC
0060	R15431000	FILTER COVER GASKET	1	PC
0070	R10363000	PANTHER FILTER KIT	1	PC
0080	R20009000	KIT BY-PASS PBT	1	PC
0090	R11702000	ANTISIPHON KIT	1	PC
0100	R20024000	PUMP-BODY PANTHER 90 AC	1	PC
0110	R18127000	KIT 5 VANES PPS + 5 SPRINGS	1	PC
0130	R08535000	0,5 HP ENGINE FAN COVER KIT	1	PC
0150	R09180000	FLANGE KIT 1" BSP	1	PC
0160	R17396000	SWITCH FOR PANTHER INSIDE CUBE	1	PC
0170	R08534000	0,5 HP ENGINE FAN KIT	1	PC
0180	R1392100A	CONDENSER 14µF 540V MOTOR 0.5/0.7 HP	1	PC
0190	R12799000	KIT TOOL FOR REPLACING MECHANICAL SEAL	1	PC