

PETRO INDUSTRIAL



OPSM DOCUMENTATION PACKAGE

PETRO Global Coverage

Strategically Located

PETRO Industrial is a truly global brand, with company owned branches positioned strategically worldwide.



Certifications

We have been the first amongst our competitors to fully invest in our systems and processes and obtain independent, third party certification in accordance to the internationally recognised Quality Standard - ISO9001: 2015. We are proud to say that PETRO industrial has, and continues to pass all of the audits and scrutiny applied by SAI Global with flying colours. This leads to the certification of our Quality Systems and Processes.



PETRO Industrial is a market leading commercial refuelling equipment solutions supplier. With a wide range of in-house capabilities, there is no project the team of PETRO Refuelling Specialists can not handle.



PETRO'S CAPABILITIES

We are a Projects Business by nature, offering tailor made, turnkey fuel storage solutions to our customers. PETRO's extensive capabilities allow for projects to be managed solely during the design, development, manufacturing, delivery and commissioning stages of a project.

PARTS & SPARES

We offer a wide range of parts and spares both online and over the phone.



DESIGN & ENGINEERING

The in-house, engineering and drafting team has the capability to prototype, develop and tailor projects prior to production.



MANUFACTURING & FABRICATION

Direct factory integration, as well as on-shore manufacturing and fabrication, with no middle man.



FUEL TANK SUPPLY

PETRO Industrial is an industry-leading fuel tank supplier and industry-leading provider of self-bunded fuel tank solutions.



ONSITE TANK MAINTENANCE

Our after-sales service is second to none, with fuel tank maintenance services on offer to maintain your fuel tank's reliability and functionality.



ONSITE INSTALLATION

Our fuel tank installation experts offer market-leading onsite installation and commissioning.



SITE COMPLIANCE

We are experts in site compliance during all stages of the project. Pre-installation, during installation and post-installation.



TANK FARMS

We provide modular, scalable, intelligently designed self-bunded tank farms, for the bulk storage of diesel, ULP, lubricants and other liquids.

PETRO On-Site Tank Maintenance Service.



REFUELING YOUR MACHINERY WITH CONTAMINATED FUEL CAN BE CATASTROPHIC

Allow our qualified PETRO maintenance staff to maintain and service your investment and prolong its longevity while you focus on running your business.

Any downtime or breakage on your equipment is profit down the drain. Keep your fuel clean and keep your machinery running.

We'll make sure everything is performing like it should. Your tank is like your vehicle, regular maintenance keeps the wheels turning or in this case, the fuel flowing.

THE MAINTENANCE SERVICE PLANS INCLUDE, BUT ARE NOT LIMITED TO:

- Inspect tank structural integrity and signs of damage
- Test tank contents for water
- Inspect all tank accessories and maintain as required
- Inspect & service pumping equipment and filteration screens in pumps and nozzles
- Check and calibrate flow meters - flow rates up to 120lpm - commercial
- Remove vent and perform operational inspection
- Tighten all bolts & fittings and inspect for leakage
- Clean/drain tank pump bay bund
- Calibrate tank gauging
- Full PETRO maintenance service report provided



CONTENTS

Company Values	5
Quality Guarantee	6
Quality Assurance ISO 9001: 2015	7
SCU DATASHEET and GA DRAWING	8
SCU IN-GROUND INSTALLATION	11
SCU ON-GROUND INSTALLATION	12
Petro Warranty Policy	17

COMPANY VALUES



Ooze Enthusiasm

We have fire in our belly. We will infect our customers, our suppliers, our staff and our stakeholders with our positive, fire in the belly, attitude to our commercial interactions.



Ethics

It's about respect. We will always do the right thing. We respect ourselves, our suppliers, our stakeholders, our employees and yes, our customers. We will do the right thing, and in return we expect the right thing to be done by us.



Make a Buck

We are not in it for the good of our health. We are here to provide an acceptable return to all of our stakeholders for their support and involvement in our business.



Make it Happen

Appoint staff who create an environment of accountability and continuous improvement. We have drive and do what we say we are going to do.



One Step Ahead

Ensuring we are a competitive and innovative company. We are adaptable, entrepreneurial and innovative and ultimately bottom line focused.



Thanks, But No Thanks

We will say no to customers, suppliers, employees and stakeholders who do not fit the culture of our business. We don't want to be everything to everyone. We want to be the best to those who want to be the best with us.



Right & Safe

We will strive to get the job done Right first time, every time but we will not compromise the Safety of our staff, our suppliers or our customers in doing so.



QUALITY GUARANTEE

As an industry leader in the design, manufacture, assembly, supply and installation of Commercial Petroleum Equipment, PETRO Industrial has again raised the bar. We are the first amongst our peers to firstly invest in our systems and processes and secondly obtain independent, third party certification to the internationally recognised Quality Standard – ISO9001:2015.

We are proud to announce that PETRO Industrial has passed all of the audits and scrutiny applied by SAI Global leading to the certification of our Quality Systems and Processes to ISO9001:2015.

What does this mean to you?

We are not a Fly-by-Nighter

The barriers to entry in our industry are coming down. Anyone can traipse up to China, engage a factory, and import equipment into the market. Would you rather deal with a fly-by-night company who probably won't be there to support the product into the future, or a strong, well managed company such as PETRO who constantly invests in our people, our systems and our processes? if it was my money I know who I would deal with.

We Learn from Mistakes

If we make a mistake we have a formal system in place to record this, and a process to ensure we don't make the same mistake twice. We will actively seek feedback from you and we will strive to further improve ourselves so that the customer experience with PETRO just keeps on getting better.

First Time Every Time

We recognise that you want us to get it right first time, every time. The only way we will achieve this is to document how we do stuff and ensure that we stick to these systems and processes developed.

They will be Back

This is only the beginning of the process. We are in the process of training internal auditors to check, double-check and indeed triple-check our systems and processes. In addition, SAI Global will be back to independently audit us regularly to ensure we are sticking to the rules!!

Don't be tempted by the 'cheap tank'. Compare us with the others. We have a strong balance sheet, we pay our bills on time, every time, we are run by the guys who originally kicked off these self funded tanks in the Australian market and we invest strongly in our people, our systems and our processes. We will be there to support whatever we sell you - long term – will they be?



Quality
ISO 9001

QUALITY ASSURANCE ISO 9001: 2015



**CERTIFICATE
OF REGISTRATION**

This is to certify that:
Petro Industrial Pty Ltd
ABN 25 141 299 587

Factory 2 - 106 Potassium Street Narangba QLD 4504 AUSTRALIA

operates a

QUALITY MANAGEMENT SYSTEM

which complies with the requirements of

ISO 9001:2015

for the following scope

The supply of petrochemical storage and dispensing solutions, including compliance referencing, assembling, testing and distribution of products.

Certificate No: QMS40346

Issued: 28 January 2021

Originally Certified: 12 February 2014

Expires: 8 February 2024

Current Certification: 27 January 2021

Frank Camasta
Global Head of Technical Services
SAI Global Assurance



WWW.JAS-ANZ.ORG/REGISTER

Registered by:
SAI Global Certification Services Pty Ltd (ACN 108 716 660) 680 George Street Sydney NSW 2000 Australia with SAI Global Pty Limited 680 George Street Sydney NSW 2000 Australia ("SAI Global") and subject to the SAI Global Terms and Conditions for Certification. While all due care and skill was exercised in carrying out this assessment, SAI Global accepts responsibility only for proven negligence. This certificate remains the property of SAI Global and must be returned to SAI Global upon its request. To verify that this certificate is current please refer to SAI Global On-Line Certification register at <http://register.saiglobal.com/>





SCU DATASHEET and GA DRAWING

Overview:

A copy of the above is included below:

Factory 2-106 Potassium Street , PO Box 407
Narangba QLD 4504 AU
P: +61 (0) 7 3204 9558
F: +61 (0) 7 3293 4852

sales@petroindustrial.com.au

8 of 19





SPILL CONTAINMENT UNIT

Item code: SCU

The PETRO Spill Containment Unit (SCU) has been designed as a portable spill pad to be used on temporary project sites. The PETRO SCU is designed to capture small spills at the refueling point located near the bulk tank farm facility. Over time it is these ongoing small releases to the environment that does most damage and leaves an expensive environmental mess to clean up.

The PETRO SCU can be connect to a portable bag separator, or it can be combined with a full Oily Water Separator module for longer term project requirements. We can custom manufacture the SCU to suit your project site. Ramps are available for on ground applications. The PETRO SCU can be installed on ground, or in the ground. The weight capacity of the unit is 80T

FEATURES:

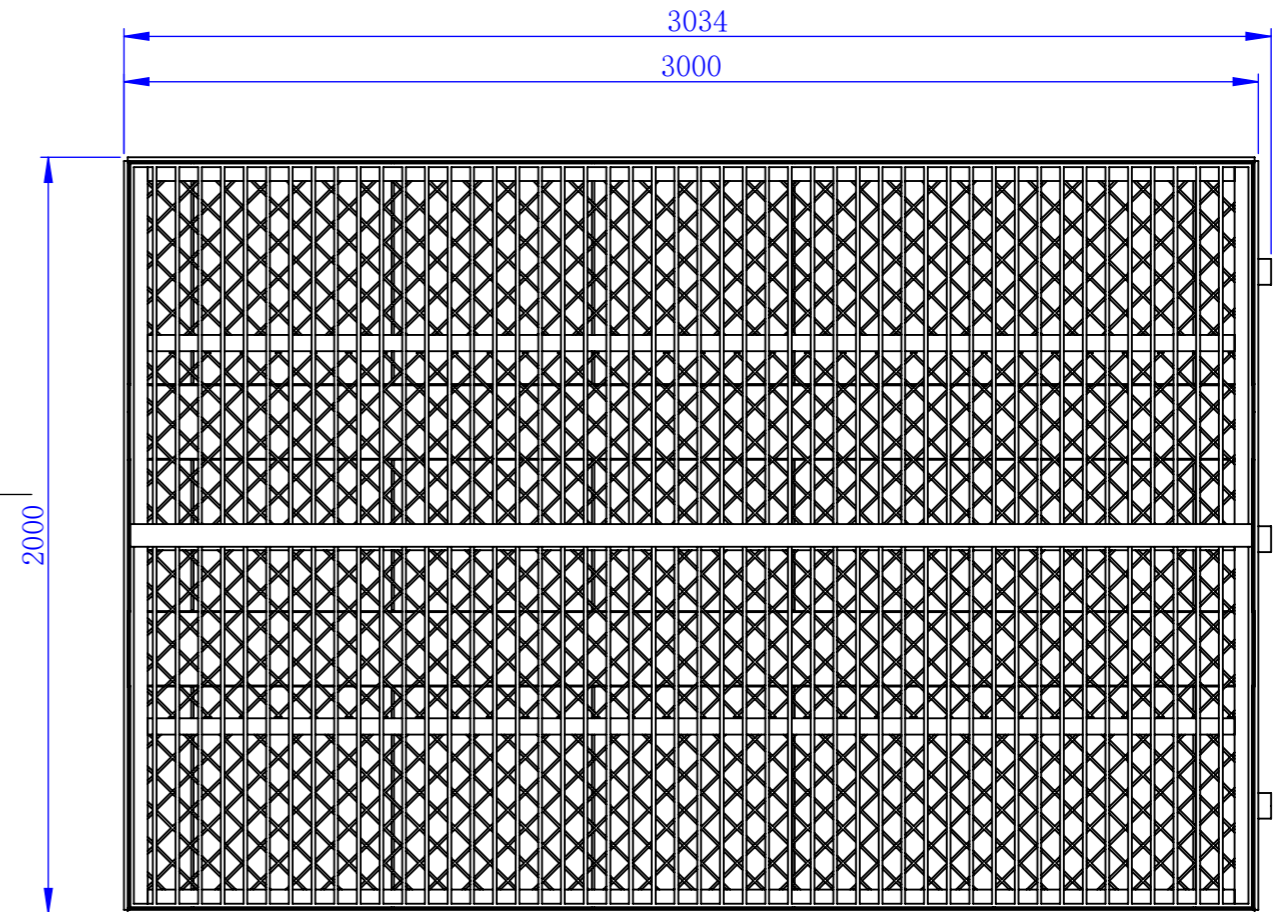
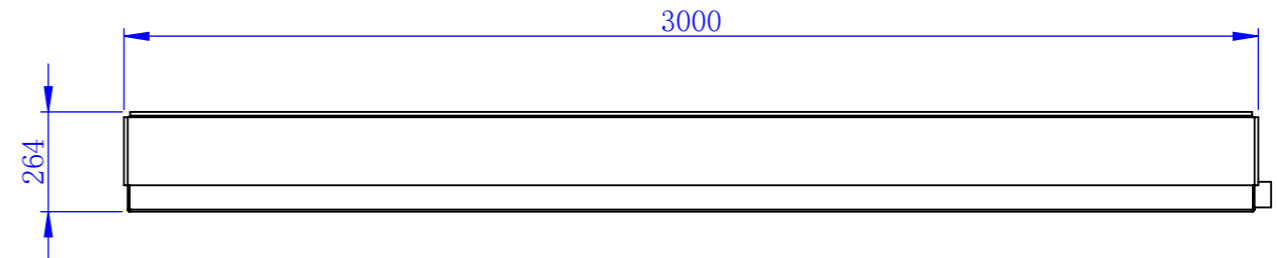
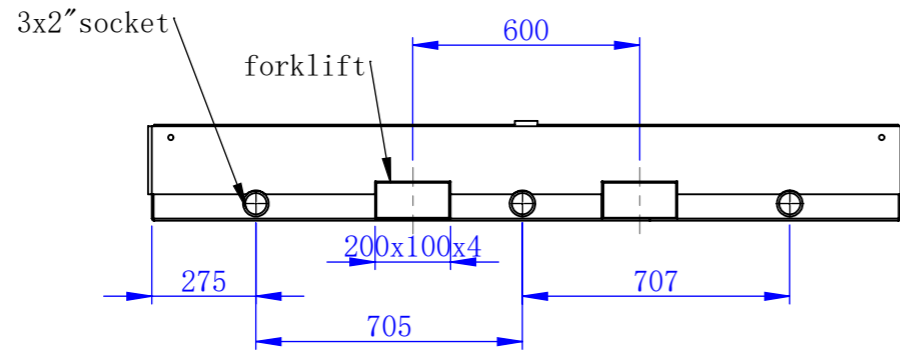
- Portable, Heavy Duty, Galvanised Unit.
- Designed to capture spills at fill point.
- Perfect for projects / construction work.
- Removable heavy duty galvanised grating.
- Multiple bung drain points for connection to site plumbing or separator systems.
- Modular design, able to be linked to form larger spill pads.
- Optional Ramps are available for on ground applications.
- Available for Hire, Rent to Buy or Purchase.

AVAILABLE ON REQUEST:

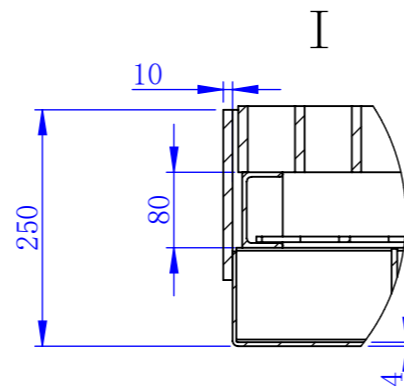
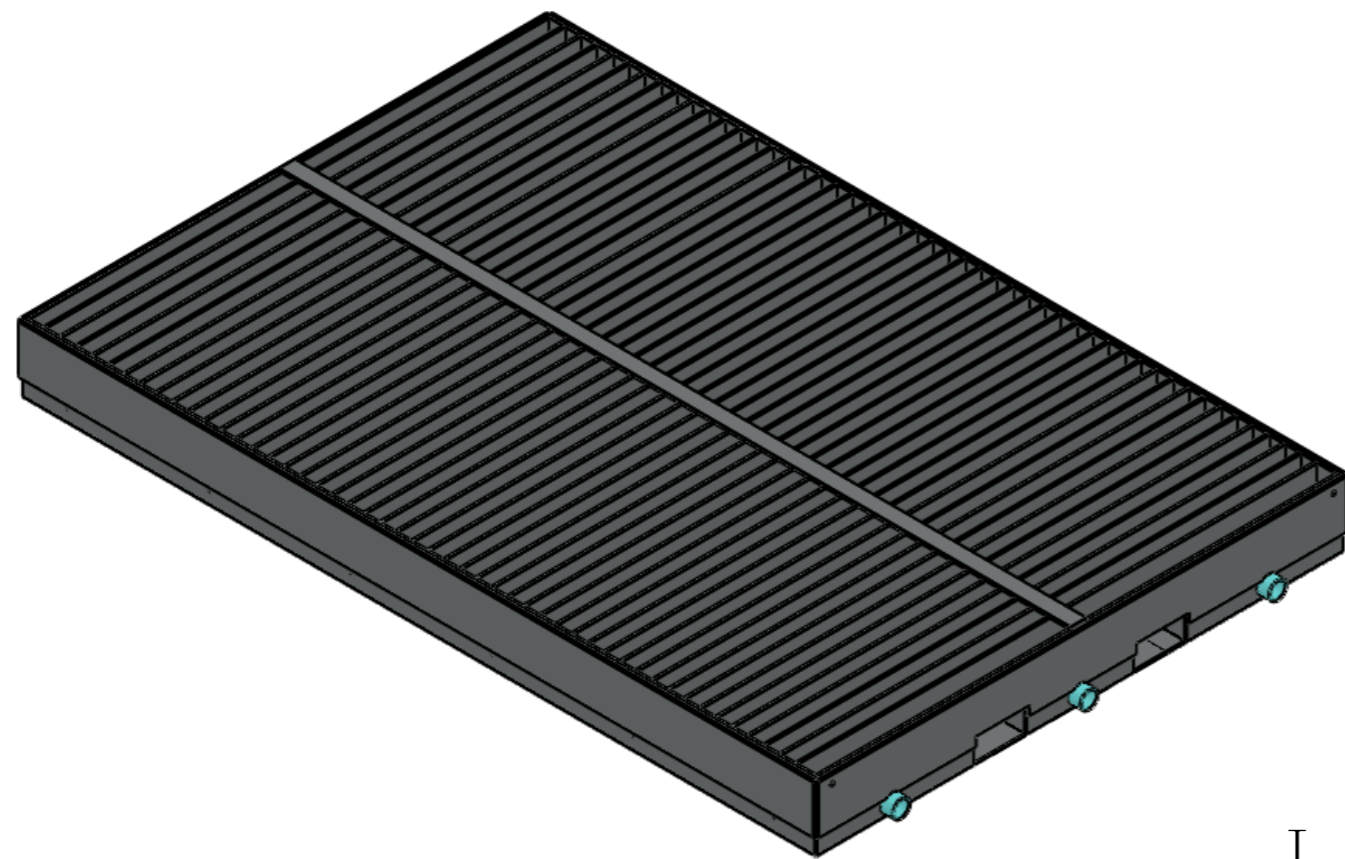
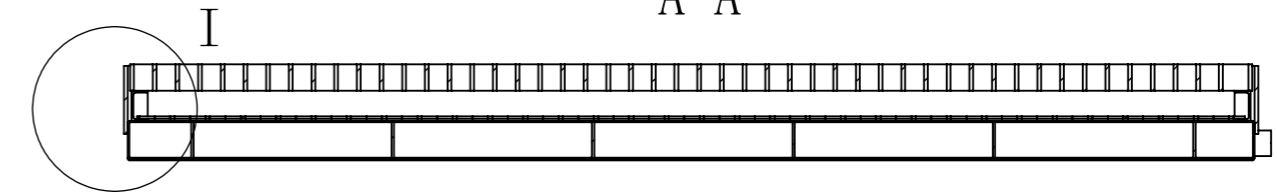


DO NOT SCALE FROM DRAWING. IF IN DOUBT: ASK

UNLESS OTHERWISE SPECIFIED, ALL DIMENSIONS ARE IN MILLIMETRES



A-A



THIRD ANGLE PROJECTION

COPYRIGHT © 2006
THE CONTENTS OF THIS DRAWING
REMAINS THE PROPERTY OF PETRO
Industrial.
CONTENTS MAY NOT BE
COPIED OR REPRODUCED UNLESS
PREVIOUSLY AUTHORIZED

	NAME	DATE
DRAWN		2022/1/20
CHK'D		
APPV'D		



TOLERANCE U.N.O.
0 = -1.0
0.0 = -0.4
0.00 = -0.1

MATERIAL:
WEIGHT: 1239.33 Kg

DWG NO. / PART NO. SCU	JOB NO.
CLIENT:	
TITLE:	
SCALE: N.T.S.	SHEET 1 OF 1
10 of 19	SHEET SIZE A3
	REVISION 01

SCU IN-GROUND INSTALLATION

Procedure for Standard Size SCU 3,000mm x 2,000mm x 264mm

1. Ensure installation area is flat and even
2. Excavate area to the above dimensions with all sides buried except the 3x2" sockets.
 - a. For multiple SCU installation increase excavation area. E.g. 2 x SCUs would equal 3,000mm x 4,000mm x 264mm
3. Place SCU in hole using forklift or slings through forklift tyne pockets

SCU IN-GROUND MAINTENANCE

Procedure:

1. Ensure SCU is checked on a weekly basis for liquid
2. Ensure contents of SCU is emptied once the level reaches the top of the 2" socket/s
3. Attach a Bund Discharge Filter or a Oil/Water Separator to capture the petrochemical content. These petrochemical capture solutions are available from PETRO Industrial on 07 3204 9558 or sales@petroindustrial.com.au





SCU ON-GROUND INSTALLATION

Procedure for Standard Size SCU 3,000mm x 2,000mm x 264mm

1. Ensure installation area is flat and even
2. Place SCU down using Forklift or lifting slings through forklift tyne pockets
 - a. For multiple SCU installation place adjacent units parallel down the long side (3m) and secure using bracket covering bolt holes on adjacent SCUs
3. Place SCU Ramps next to SCU adjacent to the long side (3m) (available as an option from PETRO Industrial on 07 3204 9558 or sales@petroindustrial.com.au)

SCU ON-GROUND MAINTENANCE

Procedure:

1. Ensure SCU is checked on a weekly basis for liquid
2. Ensure contents of SCU is emptied once the level reaches the top of the 2" socket/s
3. Attach a Bund Discharge Filter or a Oil/Water Separator to capture the petrochemical content. These petrochemical capture solutions are available from PETRO Industrial on 07 3204 9558 or sales@petroindustrial.com.au

Factory 2-106 Potassium Street, PO Box 407
Narangba QLD 4504 AU

P: +61 (0) 7 3204 9558
F: +61 (0) 7 3293 4852

sales@petroindustrial.com.au

12 of 19





SCU RISK ASSESSMENT:

Workplace / Equipment:

Risk Assessor:

Specific Task Related to Hazard:

Assessment Date:

Section 1 Hazards: Potential HAZARDS						
	Y	N		Y	N	
Work Environment			Radiation			Environmental
Adequate access			Ionizing radiation			Spills
Air-conditioning			Non-ionizing radiation			Damage
Confined spaces			Kinetic Energy			Contamination
Lighting			The body hitting objects			Hazardous Substance
Mental stress			Hit by moving objects			Liquids
Ergonomics			Explosion			Fumes
Temperature / Weather Effects			Penetrating objects			Gases
Heat			Vibration			Vapours / mists
Cold			Acoustic / noise			Solids
Rain / flood			Energy			Manual Handling
Wind			Electrical			Lifting / carrying
Pressure (diving / altitude)			Gravity			Pushing / pulling
Lighting			Falls / trips / slips			Posture
Smoke			Falling objects			Reaching / overstretching
Health and Security			Mechanical			Repetitive movement
Food			Vehicles			Bending
Poisoning or contamination			Mobile and fixed plant			Miscellaneous
Intoxication			Powered equipment			Working at heights
Dehydration			Non-powered equipment			Cuts / lacerations
Violence						
Working alone						
Bites / stings						



Section 2 Summary of Identified Hazards

1		6	
2		7	
3		8	
4		9	
5		10	

Any specific circumstances (describe):

Persons at risk (list):

Section 3 Risk Assessment

(List identified hazards and detail measures taken to address the hazards) This form is to be expanded electronically or additional information attached where required

Controls to be considered from the following hierarchy of control

1. Elimination (is it necessary?)
2. Substitution
3. Isolation (restrict access)
4. Engineering (guarding, redesign)
5. Administration (training, SOP's,)
6. Personal Protective Equipment (PPE) eg (gloves, leather apron, coveralls, respirator) etc

Identified Hazards Exposure	Risk Rating	Required Controls	Controls Implemented	
			Y	N
Adequate access to PT Tank		Allow at least 600mm clear access to hatches		
Confined Space		Ensure monitored confined space entry procedures are in place		
Heat and Cold		Avoid exposure to +50 deg. C and Below 20 deg. C		
Poisoning/Contamination		Ensure controls advised in product Safety Data Sheet are followed		
Electricity		Prestart checks for wear and Earth PT Series Tank		
Spills - Liquid		Filling and Fuelling procedure in place – Spill Kit – Gloves and Glasses		
Work at Heights		Ensure Work at Heights procedure in place prior to PT Tank top access		



sales@petroindustrial.com.au

P: +61 (0) 7 3204 9558
F: +61 (0) 7 3293 4852

Factory 2-106 Potassium Street, PO Box 407
Narangba QLD 4504 AU

Section 4 Implementation Plan (Complete at commissioning)

Control Option	Resources	Person(s) Responsible	Proposed Implementation Date

Section 5 Comments and Endorsements

Comments: The PETRO PT Tank is a self bunded unit that requires regular checks for wear / damage of external surfaces and Bund. Regular maintenance schedule is to be implemented.

Assessment Approval:

I am satisfied that the risks are not significant and/or adequately controlled and that resources required will be provided.

Name: Position Title:

Signature: Date:



PRIORITISING HAZARDS AND RISKS

Consequence	Likelihood			
	Very Likely	Likely	Unlikely	Highly Unlikely
Life Threatening	High	High	High	Medium
Detrimental	High	High	Medium	Medium
Harmful	High	Medium	Medium	Low
Negligible	Medium	Medium	Low	Low

HAZARD CONSEQUENCE RATING TABLE

Life Threatening	Hazard may cause death or total loss of one or more bodily functions (eg. loss of: or use an arm, an eye, huge financial loss etc).
Detrimental	Hazard may cause severe injury, illness or permanent partial loss of one or more bodily functions (eg. noise induced hearing loss), or serious property damage, loss of production capability.
Harmful	Hazard may cause a reportable incident ie. an incident that results in the employee being unable to undertake their normal duties for 7 days or more, or significant property damage, high financial loss.
Negligible	Hazard may cause minor injury, illness or property damage, first aid treatment only or no injury, low financial loss.

PROBABILITY RATING TABLE

Very Likely	Exposure to hazard likely to occur frequently.
Likely	Exposure to hazard likely to occur but not frequently.
Unlikely	Exposure to hazard unlikely to occur.
Highly Unlikely	Exposure to hazard so unlikely that it can be assumed that it will not happen.



PETRO WARRANTY POLICY

1. PETRO Industrial warrants that each new and unused item of equipment (hereinafter called the Product) is of good workmanship and is free from mechanical defects, provided that:
 - The Product is installed and operated in accordance with the printed instructions as provided by PETRO Industrial.
 - The Product is used under normal operating conditions for which it is designed.
 - The Product is not subject to misuse, negligence or accident.
 - The Product receives proper care, lubrication, protection and maintenance under the supervision of suitably qualified personnel.
 - This warranty only applies where the product is maintained as per the PETRO Industrial's Tank Maintenance Schedule. This Maintenance Schedule covers the following:
 - Tank surface cleaning and paint protection
 - External valves, sockets, filtration and venting
 - Pump bay dispensing equipment
2. This warranty expires 12 months after shipment by PETRO Industrial to the first user.
3. This warranty does not apply to:
 - Fluids
 - Filters
 - Fuses
 - Bulbs
 - And other consumable or normally wearing type items unless found to be defective prior to use.
4. PETRO Industrial does not warrant the following components:
 - Engines (Gasoline or Diesel)
 - Compressors (Air or Freon)
 - Storage Batteries
 - Engine Starters
 - Generators
 - Alternators
 - Regulators
 - Governors
 - Transmissions
 - Any other Product having its own inherent warranty.

Many of the foregoing components are warranted directly by the manufacturer and are serviced by a worldwide network of distributors and others authorised to handle claims for component manufacturers. A first user's claim should be presented directly to such an authorized component service outlet. In the event any component manufacturer has warranted its component to PETRO Industrial and will not deal directly with a first user, then PETRO Industrial will cooperate with the first user in the presentation of a claim to such manufacturer.

Under no circumstances does PETRO Industrial assume any liability for any warranty claim against or warranty



work done by, or on behalf, of any manufacturer of the foregoing components.

PETRO WARRANTY POLICY

5. PETRO Industrial extends this warranty only to the purchaser of new Products from PETRO Industrial or one of its authorised distributors. The products purchased under this warranty are intended for use exclusively by the buyer and its employees and by no other persons and, therefore, there shall be no third party beneficiary to this warranty.
6. A claim of defects in any Product covered by this warranty must be in writing and is subject to PETRO Industrial inspection and judgment. PETRO Industrial's liability is limited to repair only. PETRO Industrial will replace the defective product, F.O.B. factory, once the purchaser, at its expense, has returned the defective product to PETRO Industrial's nominated shipping place. Replacement and exchange parts will be warranted for the remainder of the original warranty, or for a period of ninety days, whichever is the greater.
7. Under no circumstances whatsoever shall PETRO Industrial and its authorised distributors be liable for any special or consequential damages, whether based on goodwill, lost resale profits, work stoppage, impairment of other goods or otherwise, and whether arising out of breach of any express or implied warranty, breach of contract, negligence or otherwise, except only as may be required by applicable law.
8. Continued use of Product (s) after discovery of a defect voids all warranties.
9. Except as authorised in writing, this warranty does not cover any equipment that has been altered by any party other than PETRO Industrial.
10. There are no warranties, which extend beyond the description of the face hereof. PETRO Industrial makes no warranties, express or implied, of merchant ability or fitness for a particular purpose.
11. PETRO Industrial neither assumes nor authorises any person for PETRO Industrial any liability in connection with the Products sold, and there are no oral agreements or warranties collateral to or affecting this written warranty.
12. The laws of the State of Queensland, Australia hereunder shall govern this warranty and all undertakings of PETRO Industrial.

Warning

At all times, safety must be considered an important factor in the installation, servicing and operation of the product. Skilled and technically qualified personnel should always be employed for such tasks.

PETRO Contact Information

AUSTRALIA

Australia HQ

Factory 2, 106 Potassium Street

PO Box 407

Narangba QLD 4504

P: 1300 987 789

F: +61 (0) 7 3293 4852

E: sales@petroindustrial.com.au

PETRO INDUSTRIAL



petroind.com