

**Advantages**

- Incorporates an "ON/OFF" power switch.
- Relay energized with 240 Volt dispenser/hook signal.
- Franklin Fueling Systems is an ISO 9001 certified manufacturer.
- Consult factory for applicable approvals.



**Single-Phase Control Box**

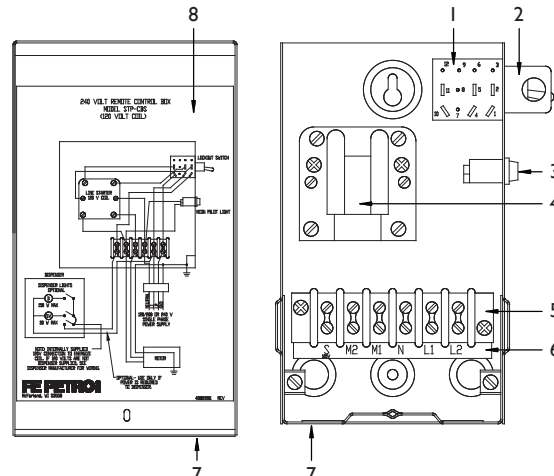
The FE Petro standard single-phase control box latches line power to the submersible when the relay is energized by a dispenser signal. Compatible with FE Petro and competitive makes of single-phase, fixed speed submersible turbines up to 2 hp.



Part Number	Description
400818922	STP-CBBS, single-phase control box, with switch and lockout, 240 Volt coil
402313921	STP-DHIB-CBBS, combo dispenser hook isolation with factory wired STP-CBBS

- Notes:
1. CBS models are compatible for use on all single-phase FE Petro submersibles and competitive makes.
  2. One CBS required per submersible, relay rated for 30 Amps up to 2 hp.
  3. Incorporates pump "ON" indicator light.
  4. Relay rated for 240 Volt pumps up to 2 hp, 30 Amps.

**STP-CBBS Repair Parts and Accessories**



Item	Part Number	Description
1	403274001	Power switch for CBS and CBBS models
2	400574001	Power switch bracket
3	400158902	Light assembly, 240 Volt
4	400215933	Relay, 30A, 240 Volt coil
5	400278006	Six position terminal strip
6	402410002	CBS terminal strip label
7	400817901	Cover and enclosure
8	400819001	CBS wiring diagram