

FILL-RITE®

H-SERIES TECHNICAL DATA SHEET

SERIES: FR1200, FR2400, FR4200, FR4400, FR600, SD1200, SD600

A series of fuel transfer pumps with UL/cUL certifications that are compatible with gasoline, diesel, fuel blends such as biodiesel up to 20% and gasoline with up to 15% ethanol, mineral spirits, and kerosene.

PRODUCT PARTS	PRODUCT MATERIALS
Pump Housing	Cast Iron
Rotor	Powdered Iron
Vane	Sintered Bronze
Strainer Mesh	Stainless Steel
Wetted	Buna-N, Fluorocarbon, Ceramic, Cork, Thermoset, Steel, Stainless Steel

	DESCRIPTION		FR1200	FR4200	SD1200	FR4400	FR2400	FR600	SD600
MOTOR	VOLTAGE, SUPPLY (DC/AC)		12V DC			24V DC		115V AC / 60HZ	
	POWER (HP)		1/4 TH					1/6 TH	
	AMPS (FULL LOAD)		26	28	26	18	15	2.5	
	AMPS (RATED)		20	19	20	13	10	2.0	
	RPM		2600 RPM					2000 RPM	
	POWER CORD*	LENGTH	5.5m		4.5m	5.5m		NOT INCLUDED	
		AWG	12						
	DUTY CYCLE		30 MINUTES (ON), THEN 30 MINUTES (OFF)						
	THERMAL PROTECTION (MOTOR)		YES						
	RECOMMENDED CIRCUIT PROTECTION		30 AMP			20 AMP		15 AMP	

*Power cord not included in pump only models.

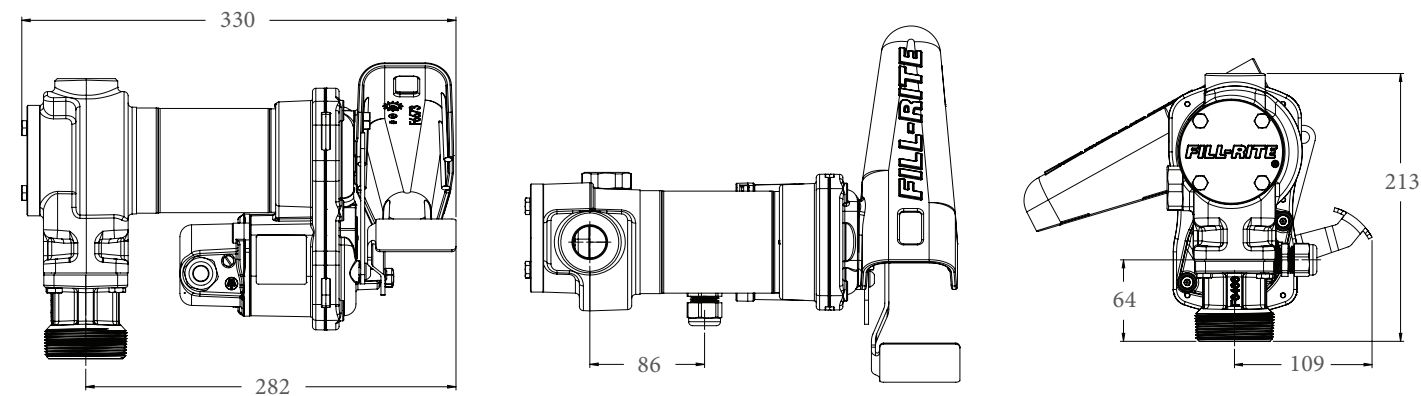
	DESCRIPTION		FR1200	FR4200	SD1200	FR4400	FR2400	FR600	SD600
PUMP	MAXIMUM GPM		15	20	13	20	15		13
	BYPASS PRESSURE		16 PSI						
	MINIMUM DRY VAC		5 IN-HG						
	AT SEA LEVEL 70° F (21.1° C)	SUCTION LIFT	2.4m MAXIMUM						
		OUTLET HEAD	11.2m MAXIMUM						
	INLET		25mm NPT						
	OUTLET		19mm NPT	25mm NPT	19mm NPT	25mm NPT	19mm NPT		
	MOUNT		2" NPT INLET BUNG						
	WARRANTY		LIMITED LIFETIME WARRANTY†			1 YEAR	LIMITED LIFETIME WARRANTY†		

H-SERIES MODEL INFORMATION: FR1200, FR2400, FR4200, FR4400, FR600, SD1200, SD600

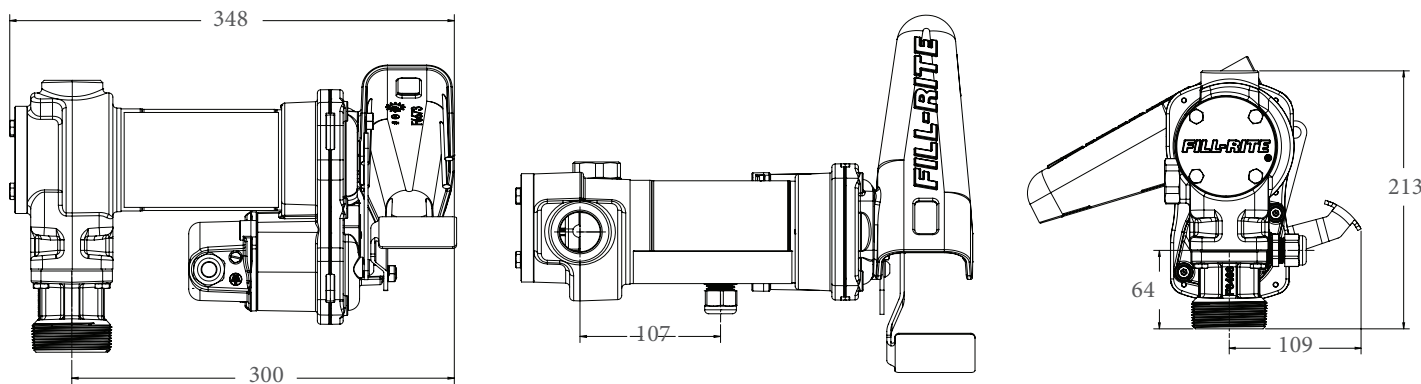
MODEL NUMBER	NOZZLE	HOSE	METER	INLET TUBE	POWER CORD	SPECIAL	VOLTAGE	OUTLET
FR1204H	PUMP ONLY MODEL						12V DC	19mm
FR1210H	MANUAL	3.6m		METAL, TELESCOPING, 508 - 876mm	12 AWG AT 5.5m			
FR1210HA	AUTO GASOLINE	3.6m						
FR1210HA1	AUTO DIESEL	3.6m						
FR1210HARC	AUTO ARCTIC	4.5m				SWIVEL		
FR1210HN								
FR1211H	MANUAL	3.6m	807C					
FR1211HL	MANUAL	3.6m	807CL					
FR1211HLN			807CL					
FR1211HN			807C					
FR1219H	MANUAL	3.6m	TT10AN					
FR2404H	PUMP ONLY MODEL						24V DC	
FR2410H	MANUAL	3.6m		METAL, TELESCOPING, 508 - 876mm	12 AWG AT 5.5m			
FR2411H	MANUAL	3.6m	807C					
FR2411HL	MANUAL	3.6m	807CL					
FR4204H	PUMP ONLY MODEL						12V DC	25mm
FR4210H	MANUAL	3.6m		METAL, TELESCOPING, 508 - 876mm	12 AWG AT 5.5m			
FR4210HARC	AUTO ARCTIC	5.5m				SWIVEL		
FR4210HB	ULTRA HI-FLOW	3.6m						
FR4210HD	AUTO DIESEL	3.6m						
FR4210HDS	AUTO DIESEL	3.6m				SWIVEL		
FR4210HBFQ	ULTRA HI-FLOW	5.5m			10 AWG AT 7.6m WITH CLAMPS	FILTER		
FR4210HN					12 AWG AT 5.5m			
FR4211H	MANUAL	3.6m	901C					
FR4211HL	MANUAL	3.6m	901CL					
FR4211HLN			901CL					
FR4211HN			901C					
FR4219H	MANUAL	3.6m	TT10AN					
FR4406H	PUMP ONLY MODEL						24V DC	
FR4410H	MANUAL	3.6m		METAL, TELESCOPING, 508 - 876mm				
FR604H	PUMP ONLY MODEL						115V AC	19mm
FR610H	MANUAL	3.6m UL		METAL, TELESCOPING, 508 - 876mm				
FR610HA	AUTOMATIC	3.6m UL						
SD1202H	MANUAL	3m		PVC, 387 - 743mm	12 AWG AT 4.5m		12V DC	
SD1202HA	AUTOMATIC	3m			12 AWG AT 4.5m			
SD602H	MANUAL	3.6m UL		PVC, 387 - 1099mm			115V AC	

DIMENSIONAL DATA INFORMATION

FR1200, FR2400, FR4400, FR600, SD1200, and SD600 (Dimensions displayed in mm)

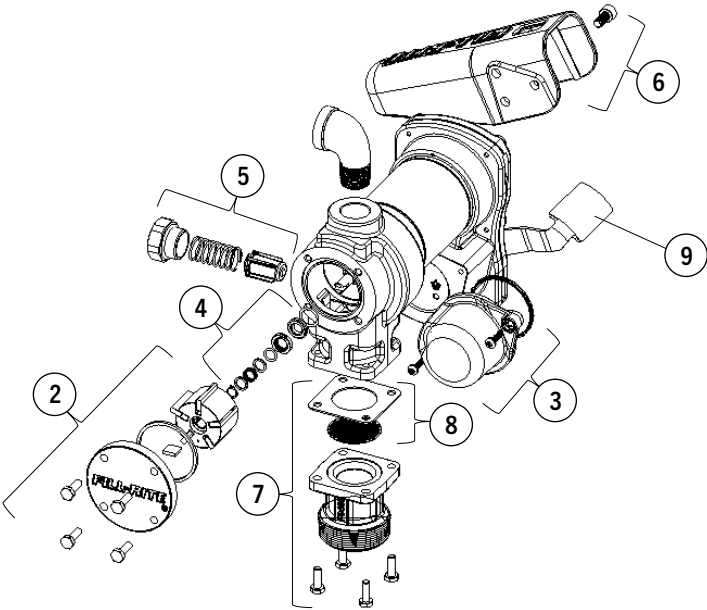


FR4200 (Dimensions displayed in mm)



KIT INFORMATION

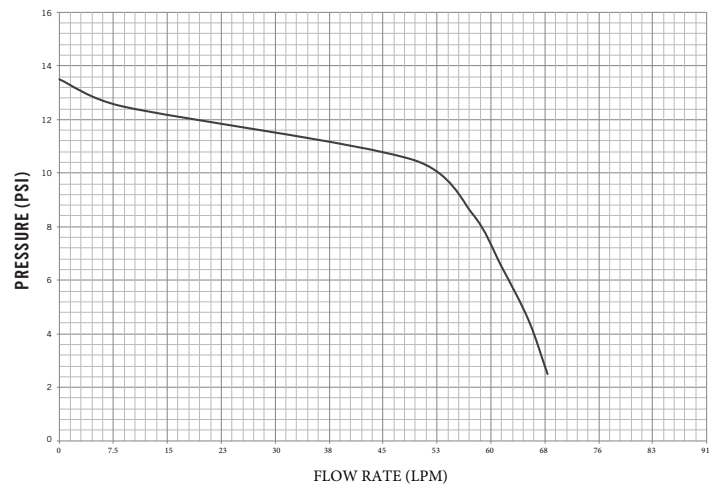
#	Kit	Description	Parts
1	KIT120BD*	BioDiesel Kit*	O-ring seal, bypass valve poppet, bypass cap seal, inlet seal
2	KIT120RGG	Rotor and Vane Kit	Rotor cover, rotor, vanes, rotor key, O-ring seal, attaching hardware
3	KIT120JCH	Junction Cover Kit	Junction cover, seal, fasteners
4	KIT120SL	Seal Kit	O-ring, shaft seals, retainer clip
5	KIT120BV	Bypass Service Kit	Bypass valve, valve spring, bypass cap, O-ring seal
6	KIT120NB	Nozzle Boot Kit	Nozzle boot, attaching hardware
7	KIT120BG	Inlet Flange Kit	Inlet flange (bung), attaching hardware, inlet seal, screen
8	KIT120SG	Inlet Gasket and Screen	Gasket for inlet (bung) and screen
9	KIT120SWH	Switch Lever Kit	Switch lever, mounting hardware



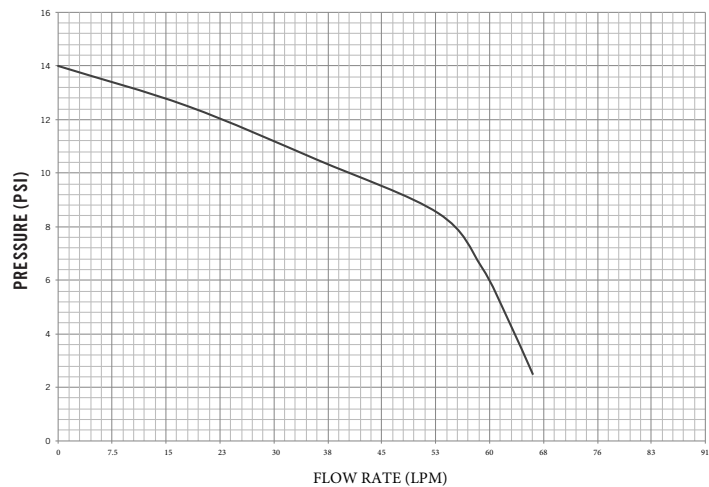
*KIT120BD not called out in diagram to the right

PERFORMANCE CURVES: FR1200, FR2400, FR4200, FR4400, and FR600 SERIES

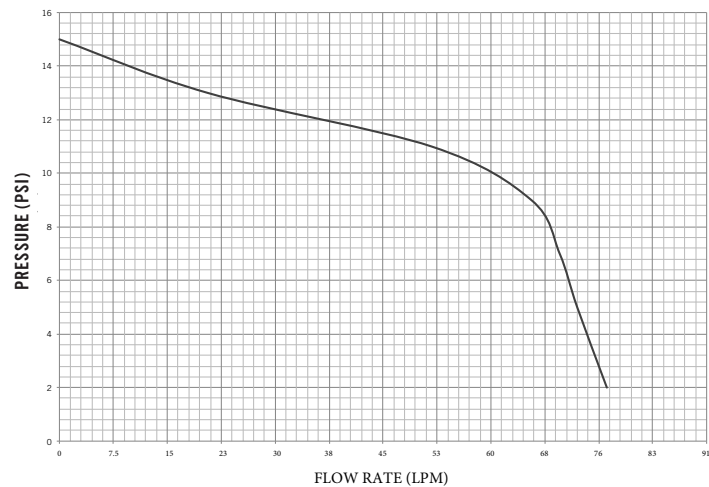
PERFORMANCE CURVE: 1200 SERIES (12V DC)



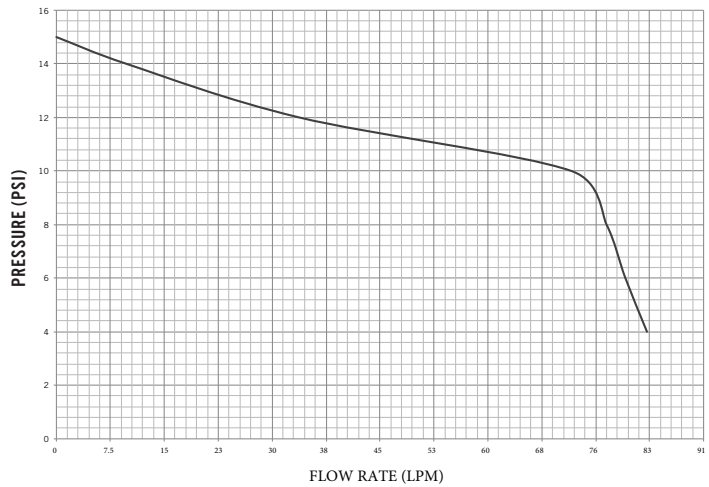
PERFORMANCE CURVE: 2400 SERIES (24V DC)



PERFORMANCE CURVE: 4200 SERIES (12V DC)



PERFORMANCE CURVE: 4400 SERIES (24V DC)



PERFORMANCE CURVE: 600 SERIES (115V AC)

