

# PETRO INDUSTRIAL



## CORE SOLUTION

Gearboxes & Reservoirs

---

## CORE SOLUTION

The CORE Solution covers the functions you need for total fluid management of your gearbox or reservoir. It combines our AB Breather and AD Drain mounts into a closed system. Allowing you to combine sampling excellence with other condition monitoring functions you need to keep your equipment reliable.

### With the CORE Solution you can:

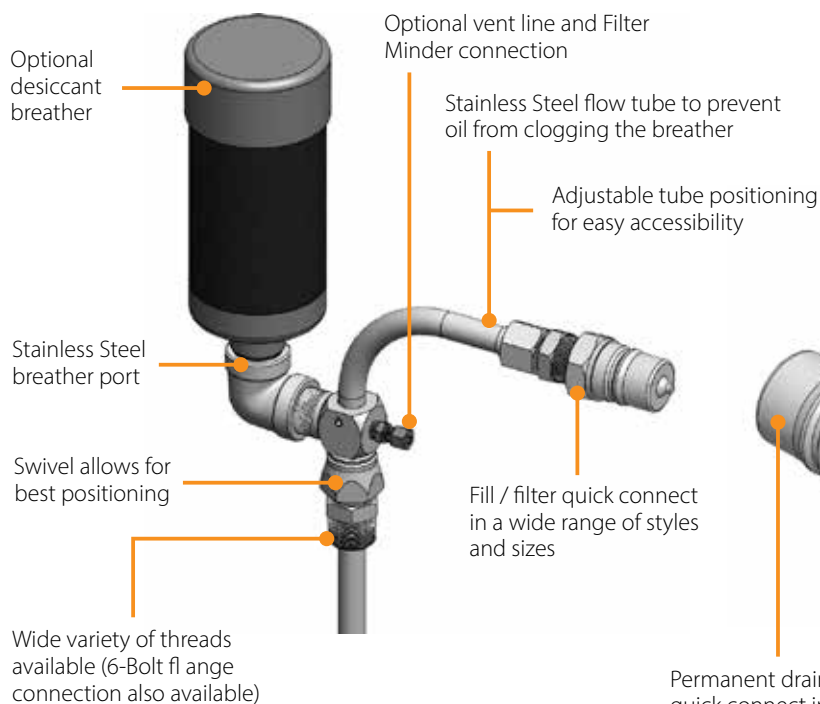
- Get best practice sampling.
- Drain your oil.
- Perform in-service filtering through a closed system.
- Complete visual oil analysis inspections.
- Protect your system from particles and moisture contamination.
- Detect oil level and discoloration.
- Electronically detect oil level, temperature, and moisture.
- Easy oil top ups.

## For the Top

### The AB Mount

#### Options not shown:

- Oil Mist Coalescer.
- Filter Minder.
- Oil Sampling.

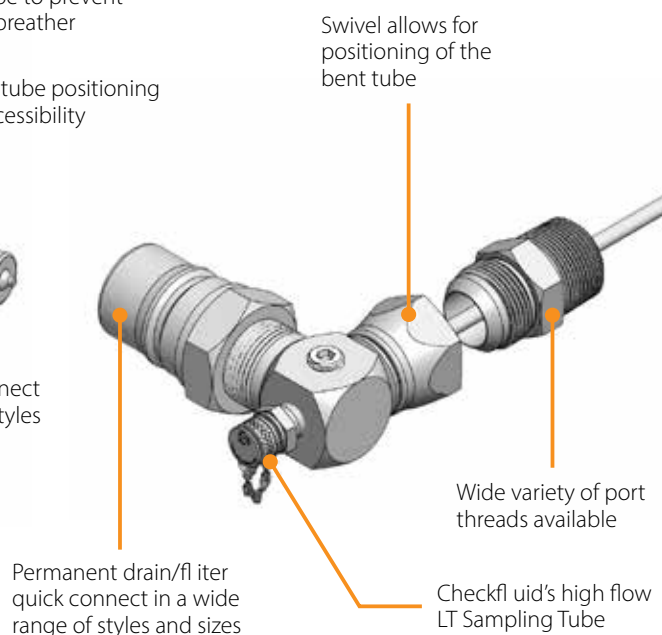


## For the Bottom

### The AD Mount

#### Options not shown:

- Sight level gauge.
- Bottom Sediment & Water Sight Glass.
- Moisture, Temperature and Level Sensor.



## WHAT COULD THE CORE DO FOR YOU?

### BACKGROUND

- The company wanted to stop opening up their system for oil samples.
- Due to the dirty environment they were getting outside particles into their system from their old sampling method.
- They also wanted to be able to filter without shutting the machine down as it was halting production.

#### AB Breather Mount with:

- Quick Connect
- Desiccant Breather

### THE CORE WAS INSTALLED

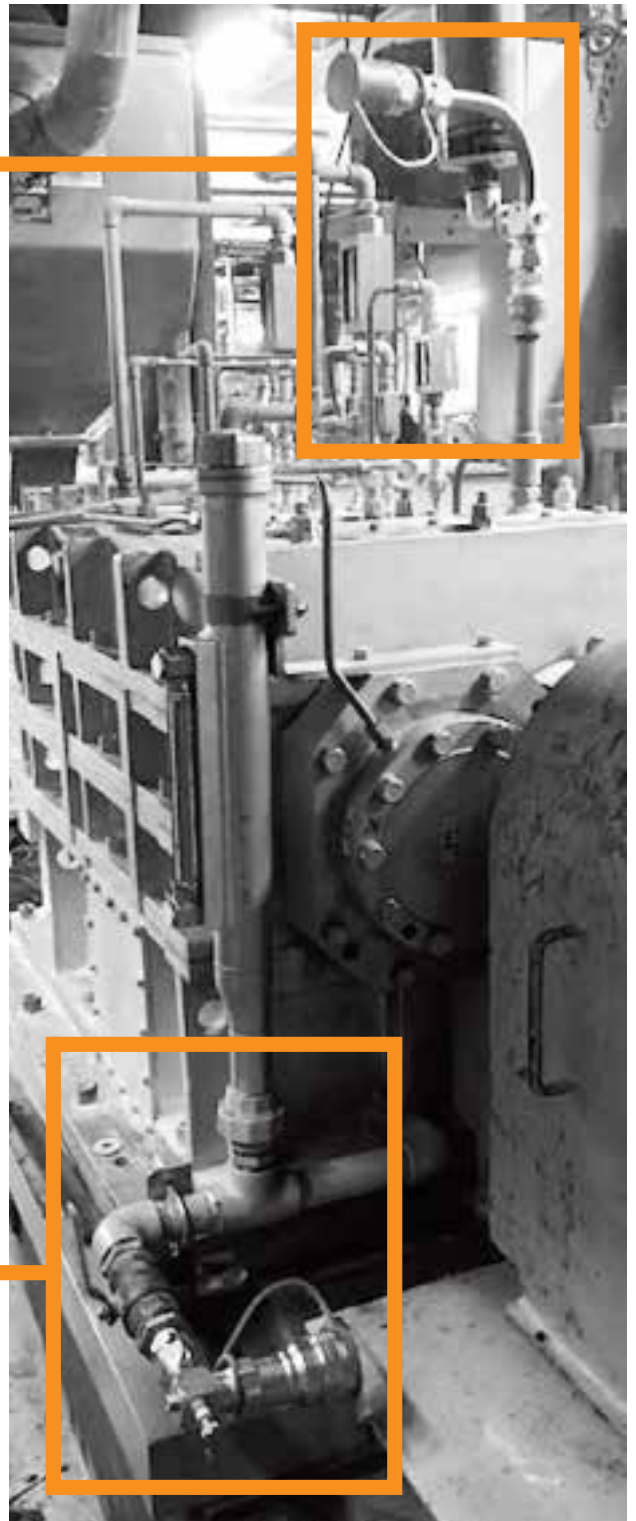
- They can now run their oil through a filter cart while the gearbox is running.
- They don't have to open the system up to sample or shutdown.

### RESULTS

"It would cost roughly \$5000 per hour to shut down our gearboxes in lost production, filtering while running keeps our lubricant clean and we can save up to \$15,000 on a 3 hour filter cycle. We are also experiencing significantly cleaner samples by taking them from the AD Drain Mount, keeping the machine closed means no particles from production getting into the system."

#### AD Drain Mount with:

- LT Sampling Tube
- Quick Connect



## PETRO Contact Information

### AFRICA

#### South Africa

Factory 14 Bentonite Street  
Alrode, Alberton, Johannesburg  
South Africa  
P: +27 (0)11 864 7758  
F: +27 (0) 11 864 1649  
E: sales@petroindustrial.co.za

### AUSTRALIA

#### Eastern Australia

Factory 2, 106 Potassium Street  
PO Box 407  
Narangba QLD 4504  
P: +61 (0) 7 3204 9558  
F: +61 (0) 7 3293 4852  
E: sales@petroindustrial.com.au

### MIDDLE EAST

#### Dubai

Office LB17233, Lobby Building 17  
Jebel Ali Free Zone  
PO Box 18602  
Dubai, United Arab Emirates  
P: +971 488 76688  
F: +971 488 76932  
E: salesuae@petroind.com

### Western Australia

173 Mulgul Road  
Malaga WA 6090  
P: +61 (0) 8 6305 0855  
F: +61 (0) 8 6305 0319  
E: info@petroperth.com.au

# PETRO INDUSTRIAL



[petroind.com](http://petroind.com)