

PETRO INDUSTRIAL



petroind.com



110% Self Bunded

BAFFLED PC CUBE SERIES

Suitable for the storage and dispensing of Diesel, Kerosene, Lubricants, Petrol and Waste Oil.

The PC Cube is a market leading self bunded tank, with versatile under-hatch connections and an intelligent design certified for lifting when full (Up to PC6.6).



FEATURES:

- Unique tank in tank design approved to UL142 / ULCS601 / AS1940, AS1692, AS1170, AS4100, AS1554.1 / BS799 / PPG2.
- Certified Crane Lifting Points (Up to and including PC6.6)
- Removable manway for ease of maintenance.
- The outer tank will hold 110% of the inner tank's capacity.
- UN31A/Y approved for the transport of Dangerous Goods by Road, Rail and Sea, Packaging Groups II & III. (PC0.66 - PC2.25)
- Lockable hatch lid with access for hoses, under hatch sockets and suction spears can operate with the hatch closed.
- Additional 50mm (2") hose entry and exit sockets on top of tank.
- Secure under-hatch generator hose suction and return points, to accommodate up to 3 generators.
- 4 x way forklift pockets.
- Incremental dipstick.
- Stackable - 3-high empty and 2-high when full.
- Supplied with all required statutory decals.
- Movable when full



We are proud to announce that **PETRO Industrial** has passed all of the audits and scrutiny applied by SAI Global, leading to the certification of our Quality Systems and Processes to **ISO9001:2015**.

View online at:
www.petroind.com





PRODUCT RANGE:

Please see the range of PETRO PC Cube Self Bunded Tanks below:

Code	Gross Volume (L)	Safe Fill Level (L)	External Dimensions (L x W x H) (mm)	Tare Weight (kg)
PC 0.66	660	600	1374 x 1086 x 810	451
PC 1.1	1100	1000	1374 x 1086 x 1270	594
PC 2.25	2250	2000	2294 x 1086 x 1270	885
PC 3.3	3300	3000	2294 x 1546 x 1270	1096
PC 4.5	4500	4000	2294 x 2084 x 1270	1328
PC 6.6	6600	6000	2966 x 2294 x 1270	1809
PC 8.8	8800	8000	3916 x 2294 x 1270	2170
PC 11	11000	10000	4876 x 2294 x 1270	2689

COMES WITH:

- 1 x 25mm (1") Suction Spear
- 2 x 13mm (1/2") Suction Spear
- 3 x 40mm (1 1/2") Return Point
- 1 x Spare 80mm (3") Socket
- 4 x Spare 50mm (2") Socket Top of Tank
- 50mm (2") Fill Point - Splash Fill Only
- Incremented Dip Stick (Select Models)
- Statutory Signage
- 4 Way Forklift Pockets
- Certified Lift Full Crane Lugs on Each Corner (Up to and including PC6.6)
- Finish Painted PETRO White Marine Specification

PETRO INDUSTRIAL



petroind.com



CERTIFICATIONS



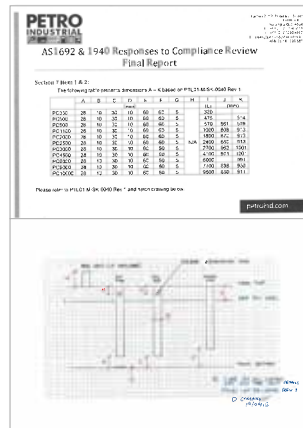
Certificate of Compliance #20121129-MH49493 for UL 142, ULC-S601, and ULC-S653.



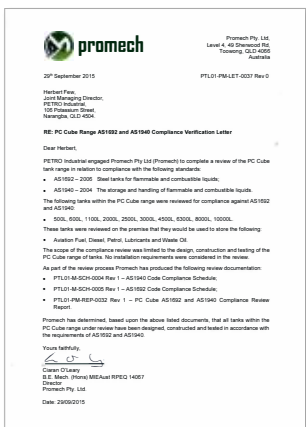
WS10 Proof Load Test Certificate Nata v2.2, #1,548. Accreditation No. 17109. Accredited for Compliance with ISO/IEC 17025.



Decals manufactured to comply with AS1319 and AS2700.



Internal Piping Dimensions Compliance Review Final Report. AS1962 and AS1940.



Cube Range AS1692 and AS1940 Compliance Verification.