

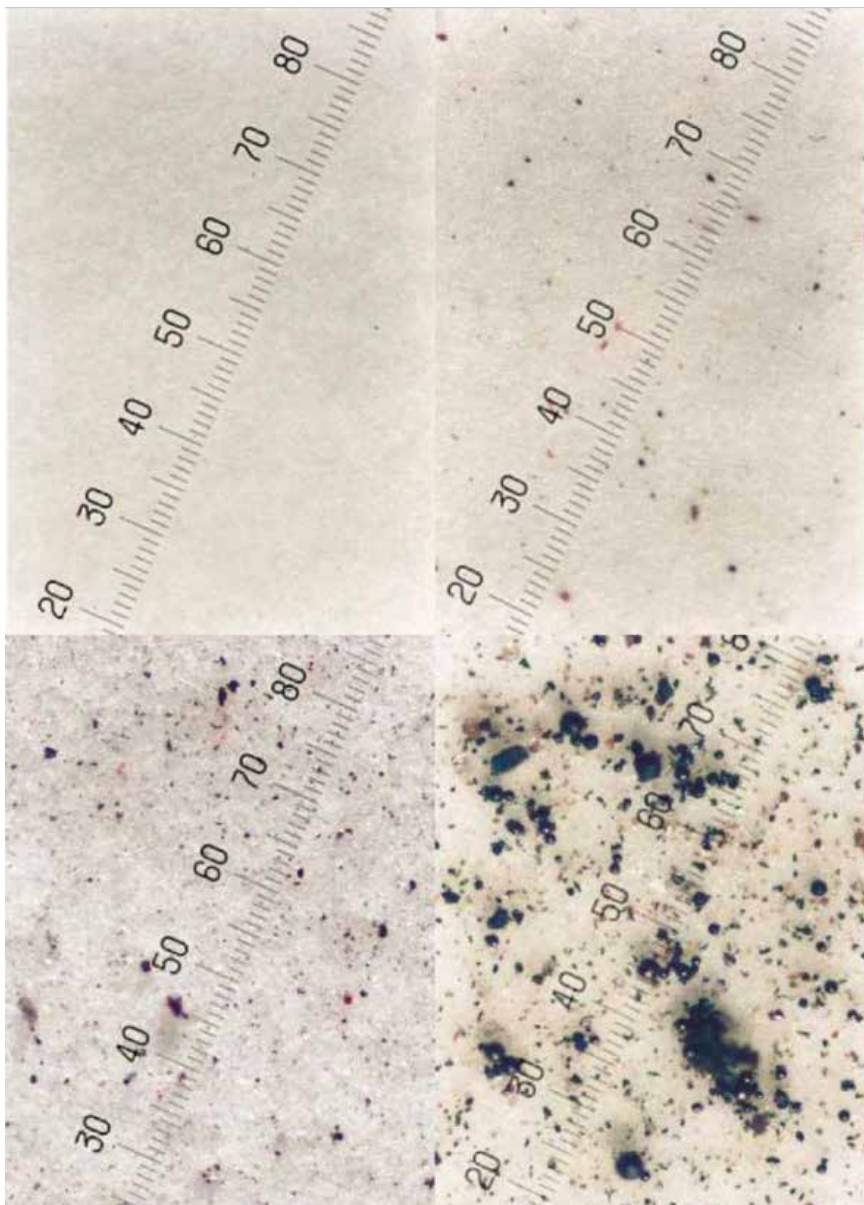
PETRO INDUSTRIAL



petroind.com



FLUID CLEANLINESS REFERENCE IMAGES





This Fluid Cleanliness Reference is a valuable tool for performing system fluid analysis. Combined with the Pall Patch Test Kit, this reference allows you to estimate the amount of contamination in a hydraulic fluid or lubrication oil.

Although it is not possible to determine exact particle counts using these reference images, it is possible for trained technicians to view these comparisons of actual patches and generally class the levels of contamination in a fluid sample.

The examples in this Fluid Cleanliness Reference were prepared from actual field samples and laboratory equipment similar to the Pall Portable Patch Test Kit.

ISO 4406 codes, NAS 1638 classes and AS4059E classes are given based on particle counts performed on fluid samples for each reference image.

Images of the 1.2 μ m membranes are at 100x magnification and 100mL fluid volume filtered.

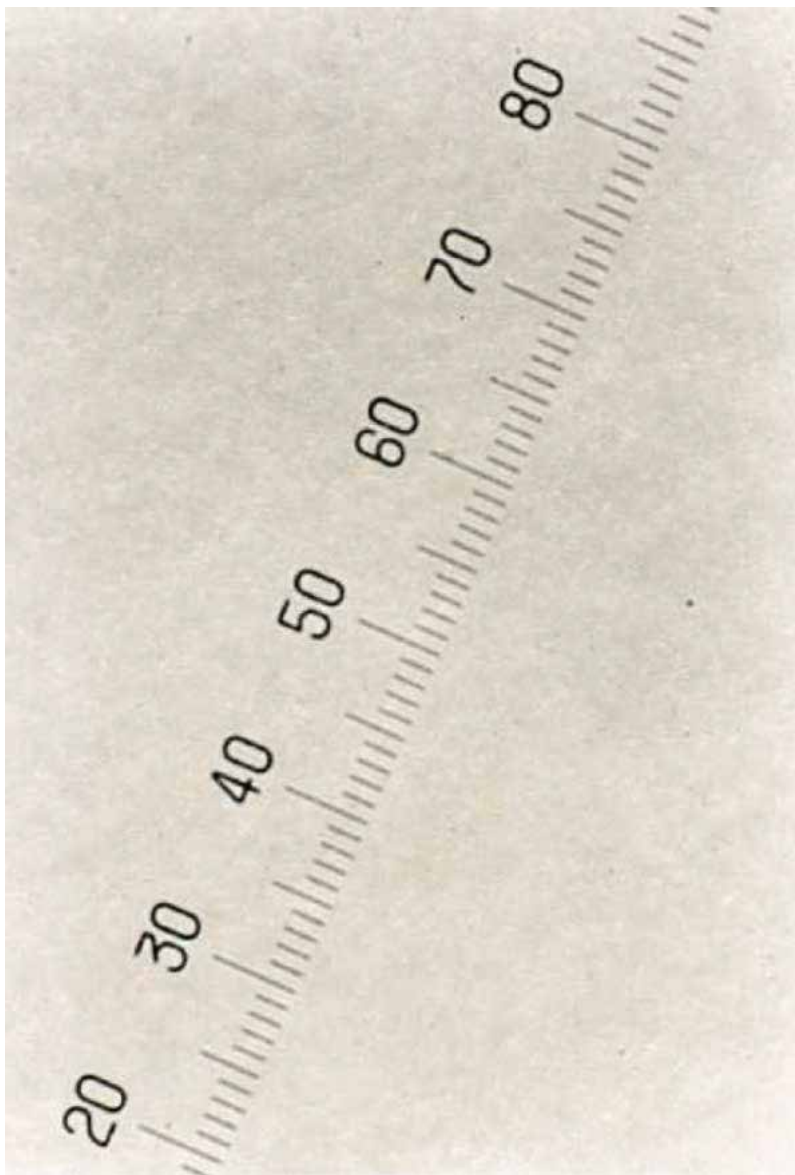


ISO4406 code 12/10/07

NAS1638 class 1 & AS4059E Table 1 class 1

AS4059E Table 2 class 1B/1C

Note: Image of membrane at 100x magnification & 100mL fluid volume filtered



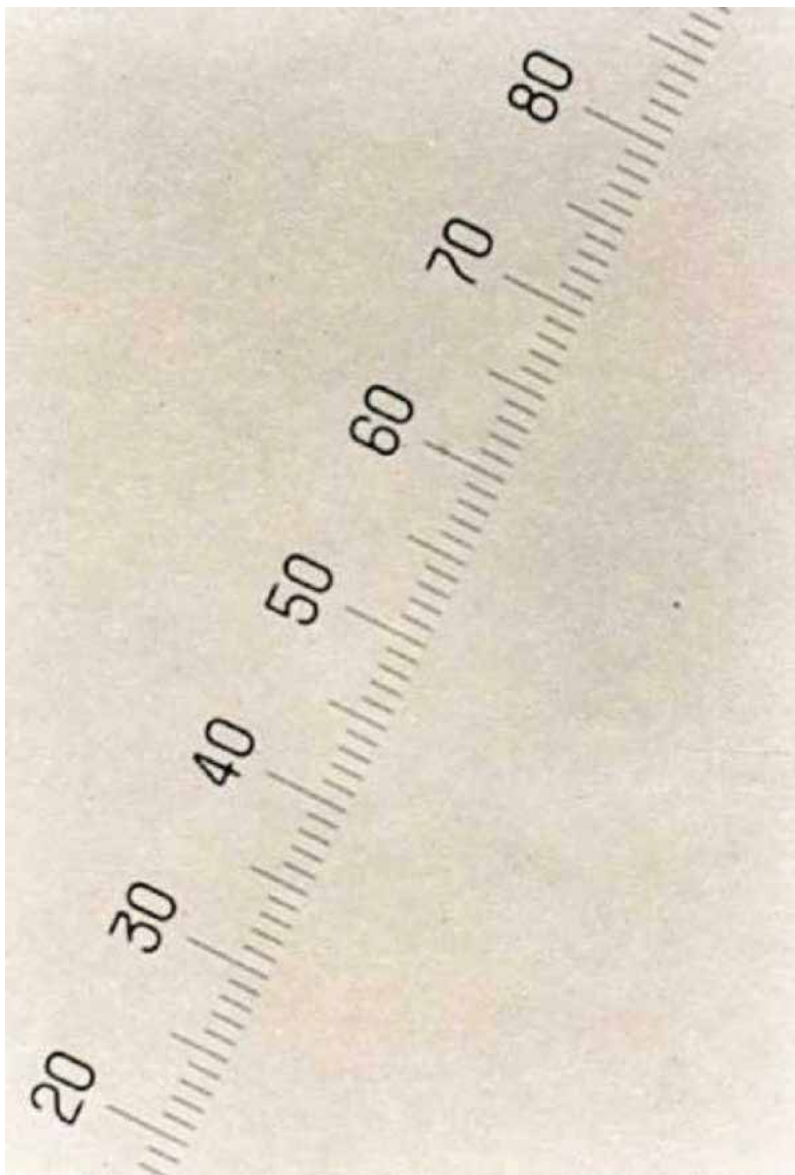


ISO4406 code 13/11/08

NAS1638 class 2 & AS4059E Table 1 class 2

AS4059E Table 2 class 2B/2C

Note: Image of membrane at 100x magnification & 100mL fluid volume filtered



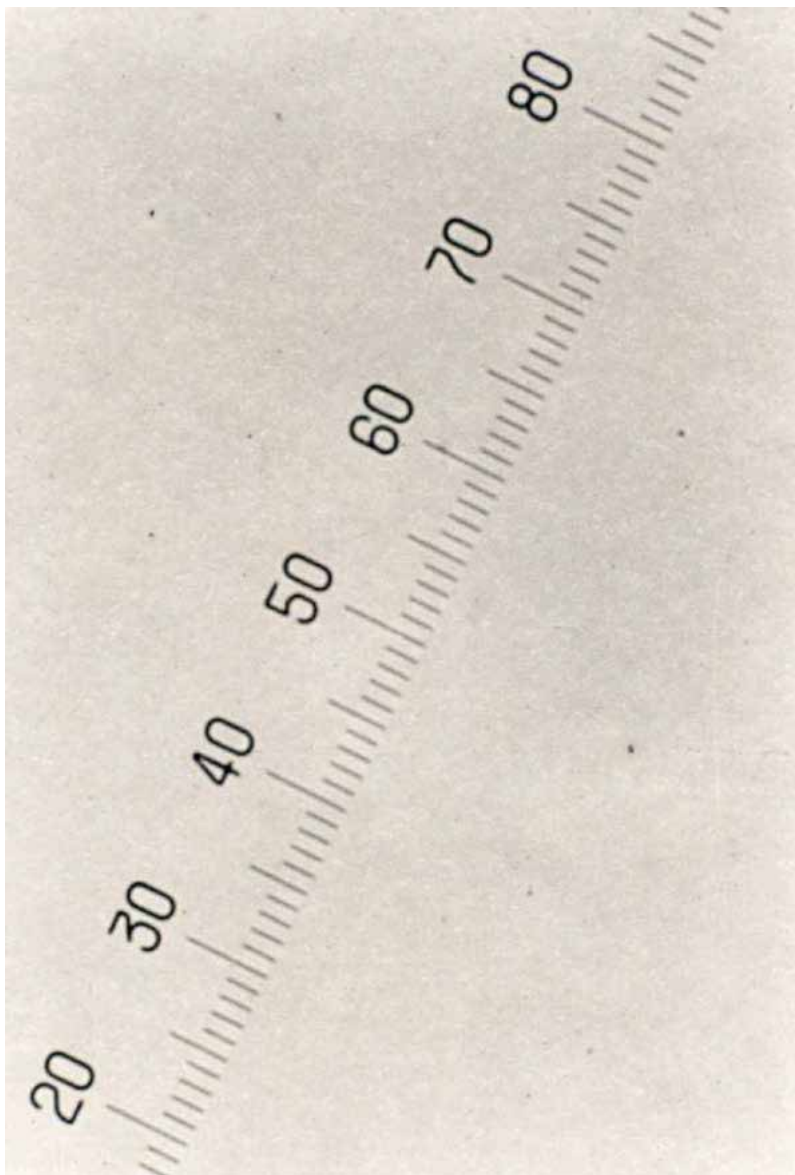


ISO4406 code 14/12/09

NAS1638 class 3 & AS4059E Table 1 class 3

AS4059E Table 2 class 3B/3C

Note: Image of membrane at 100x magnification & 100mL fluid volume filtered



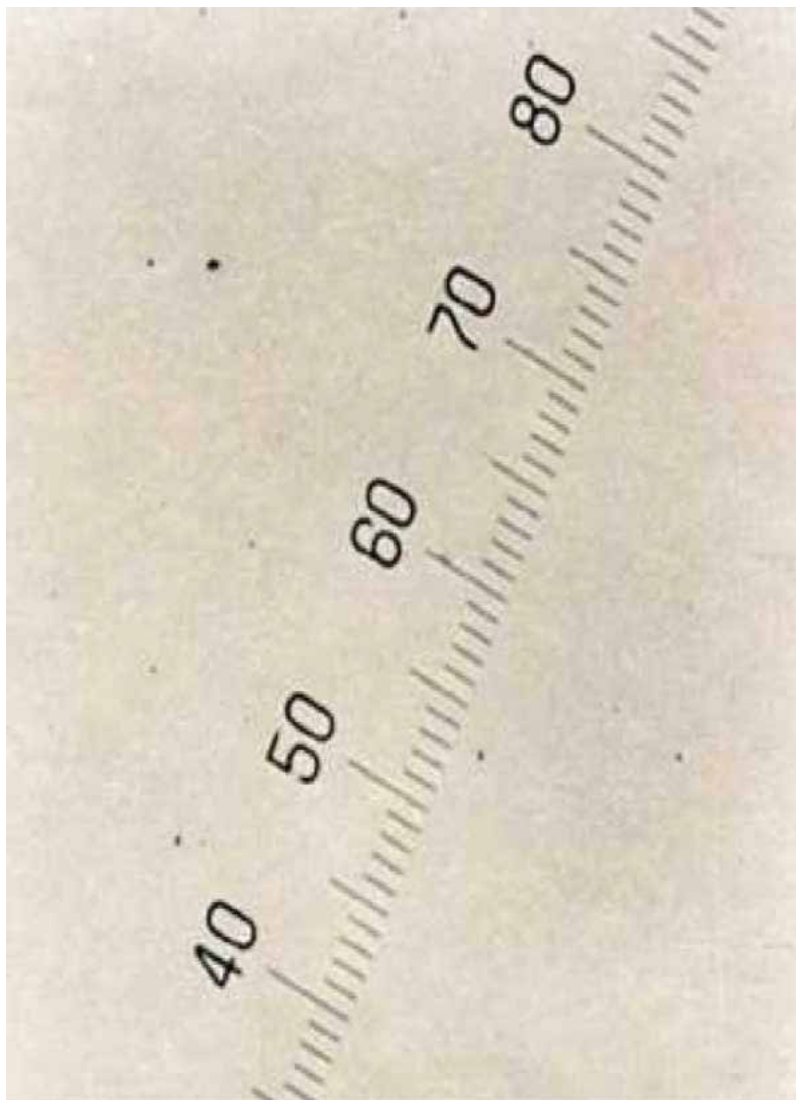


ISO4406 code 15/13/10

NAS1638 class 4 & AS4059E Table 1 class 4

AS4059E Table 2 class 4B/4C

Note: Image of membrane at 100x magnification & 100mL fluid volume filtered



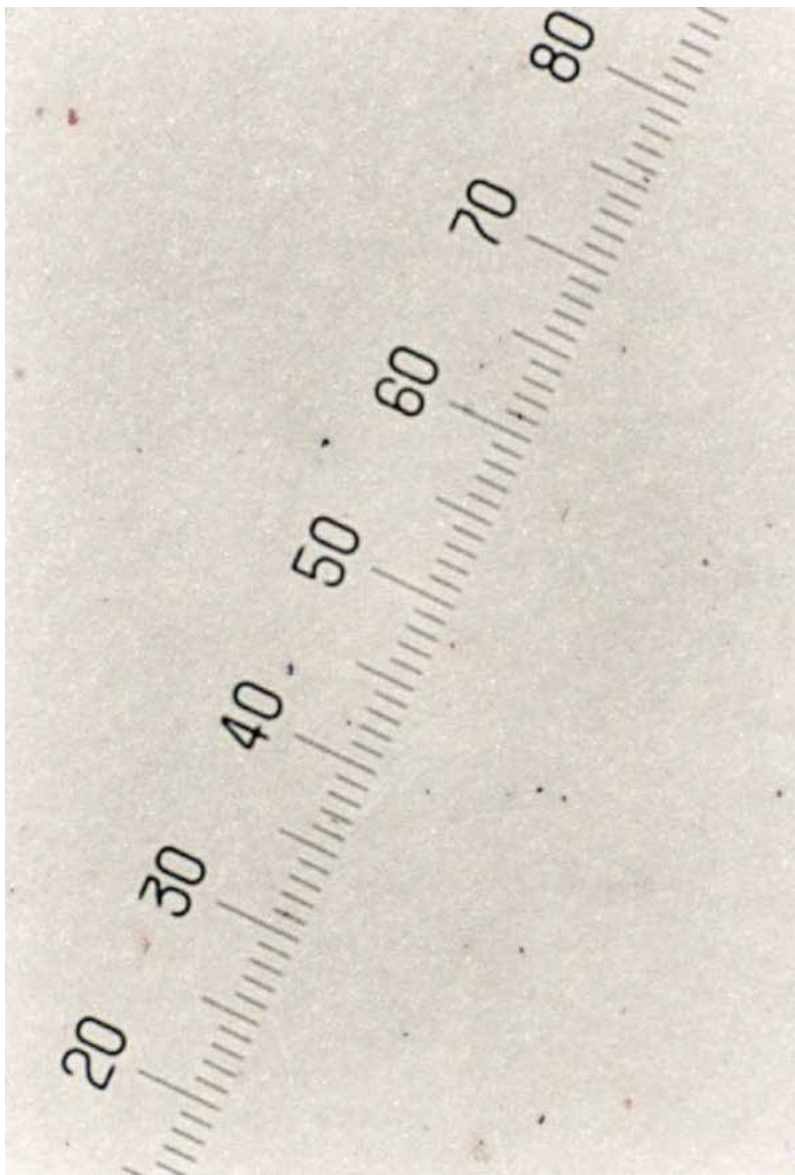


ISO4406 code 16/14/11

NAS1638 class 5 & AS4059E Table 1 class 5

AS4059E Table 2 class 5B/5C

Note: Image of membrane at 100x magnification & 100mL fluid volume filtered



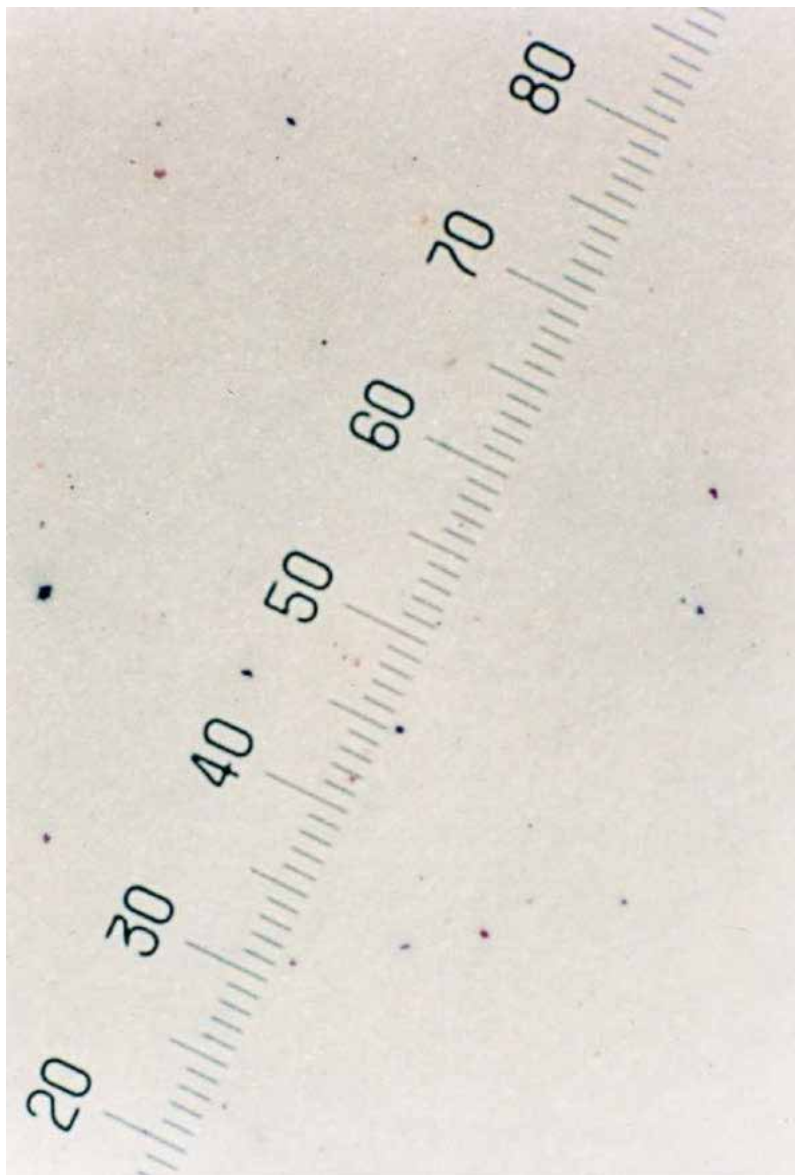


ISO4406 code 17/15/12

NAS1638 class 6 & AS4059E Table 1 class 6

AS4059E Table 2 class 6B/6C

Note: Image of membrane at 100x magnification & 100mL fluid volume filtered



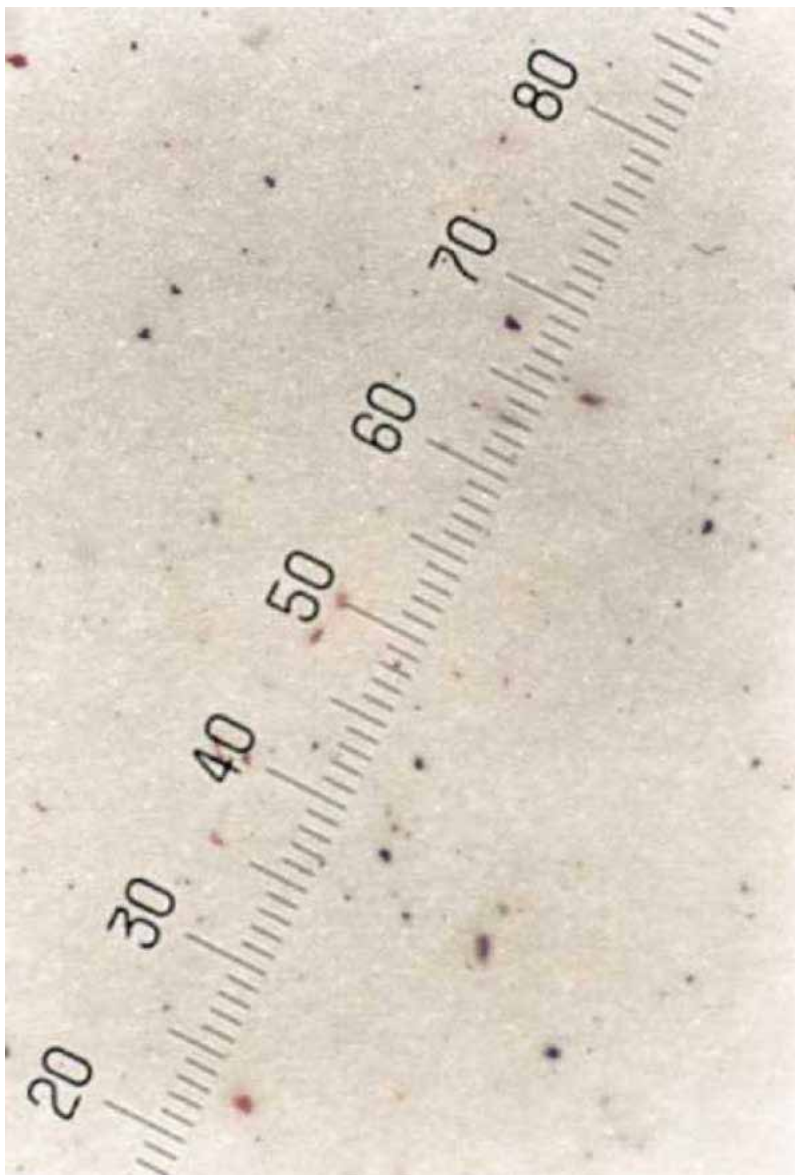


ISO4406 code 18/16/13

NAS1638 class 7 & AS4059E Table 1 class 7

AS4059E Table 2 class 7B/7C

Note: Image of membrane at 100x magnification & 100mL fluid volume filtered





ISO4406 code 19/17/14

NAS1638 class 8 & AS4059E Table 1 class 8

AS4059E Table 2 class 8B/8C

Note: Image of membrane at 100x magnification & 100mL fluid volume filtered



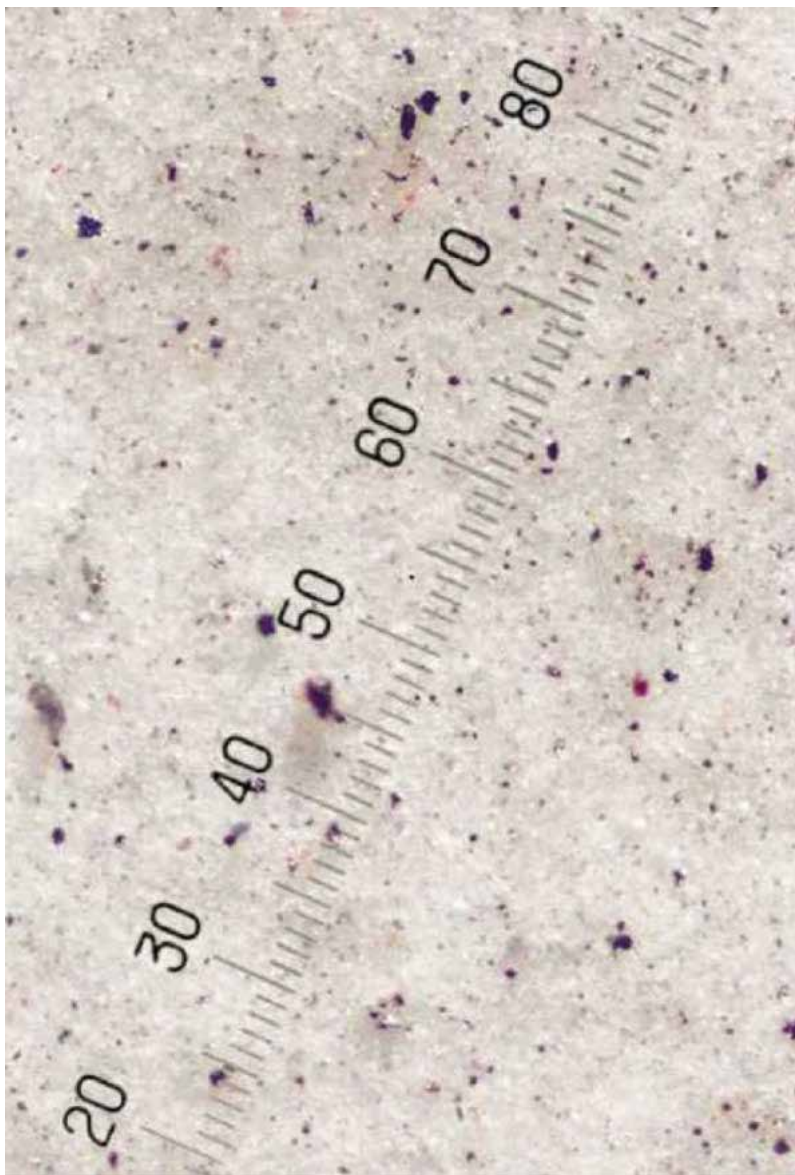


ISO4406 code 21/18/15

NAS1638 class 9 & AS4059E Table 1 class 9

AS4059E Table 2 class 9B/9C

Note: Image of membrane at 100x magnification & 100mL fluid volume filtered



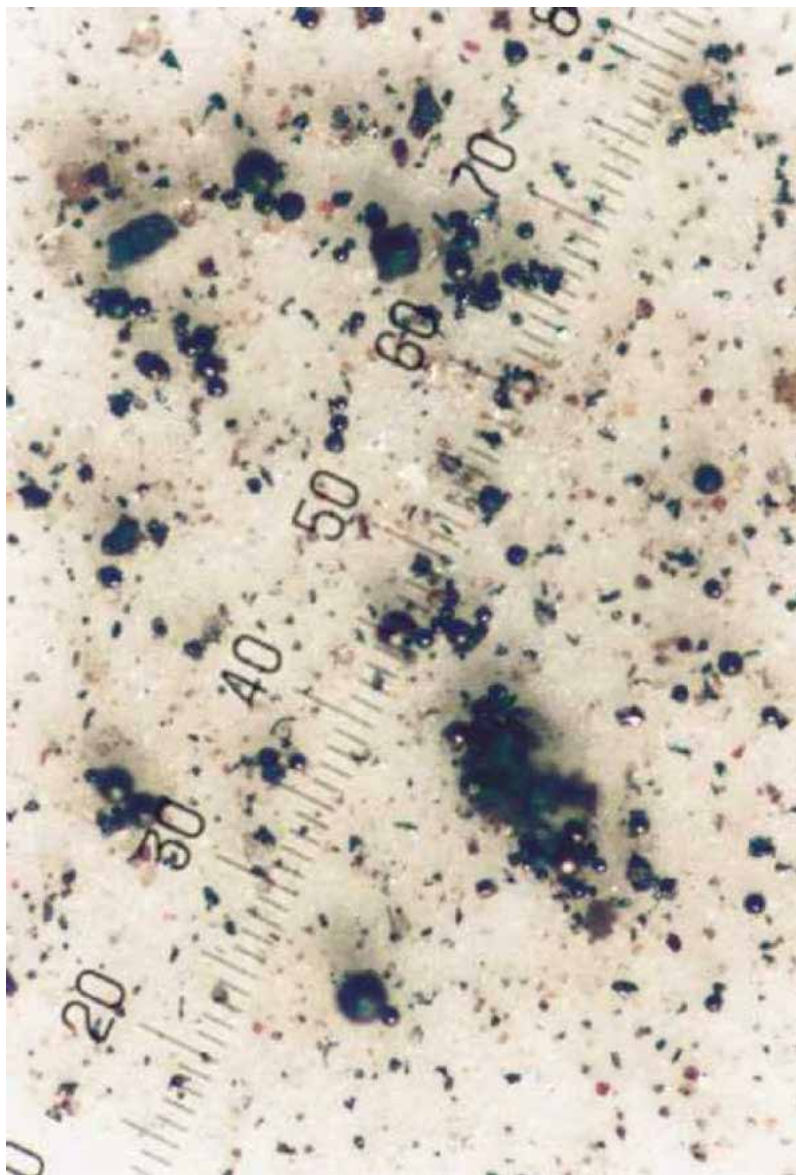


ISO4406 code 22/19/15

NAS1638 class 10 & AS4059E Table 1 class 10

AS4059E Table 2 class 10B/10C

Note: Image of membrane at 100x magnification & 100mL fluid volume filtered



PETRO Contact Information

AFRICA

South Africa

Factory 1 - 16 Bentonite Street
Alrode, Alberton, Johannesburg
South Africa
P: +27 (0)11 864 7758
F: +27 (0) 11 864 1649
E: sales@petroindustrial.co.za

AUSTRALIA

Eastern Australia

Factory 2, 106 Potassium Street
PO Box 407
Narangba QLD 4504
P: 07 3204 9558
F: 07 3293 4852
E: sales@petroindustrial.com.au

UAE

Dubai

Office LB17330, Lobby Building 17
Jebel Ali Free Zone
PO Box 18602
Dubai, United Arab Emirates
P: +971 488 76688
F: +971 488 76932
E: salesuae@petroind.com

Western Australia

2 Competition Way
Wangara WA 6065
P: 08 6305 0855
F: 08 6305 0319
E: sales@petroindustrial.com.au

PETRO INDUSTRIAL



petroind.com