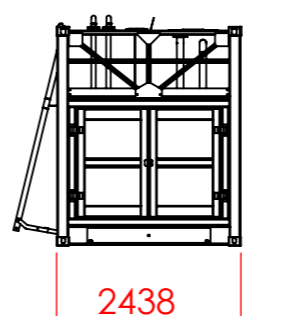
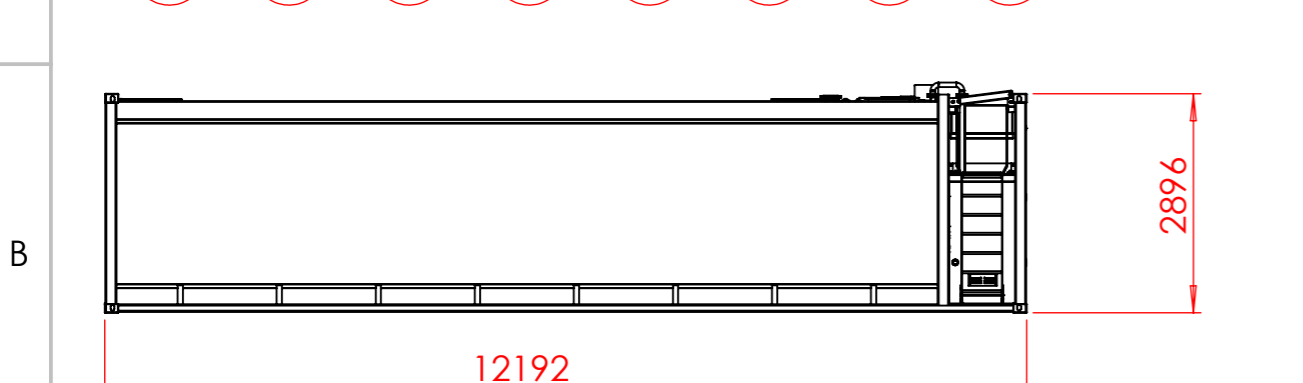
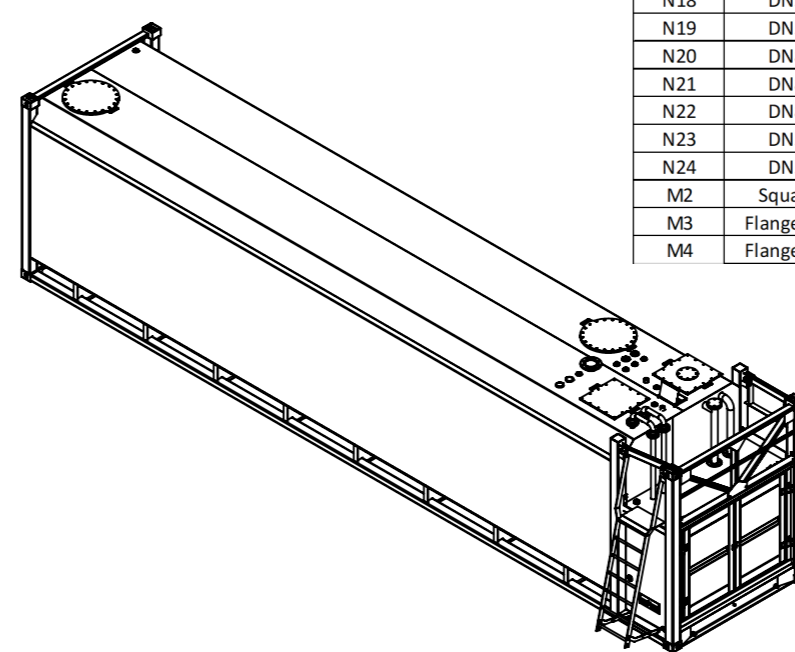
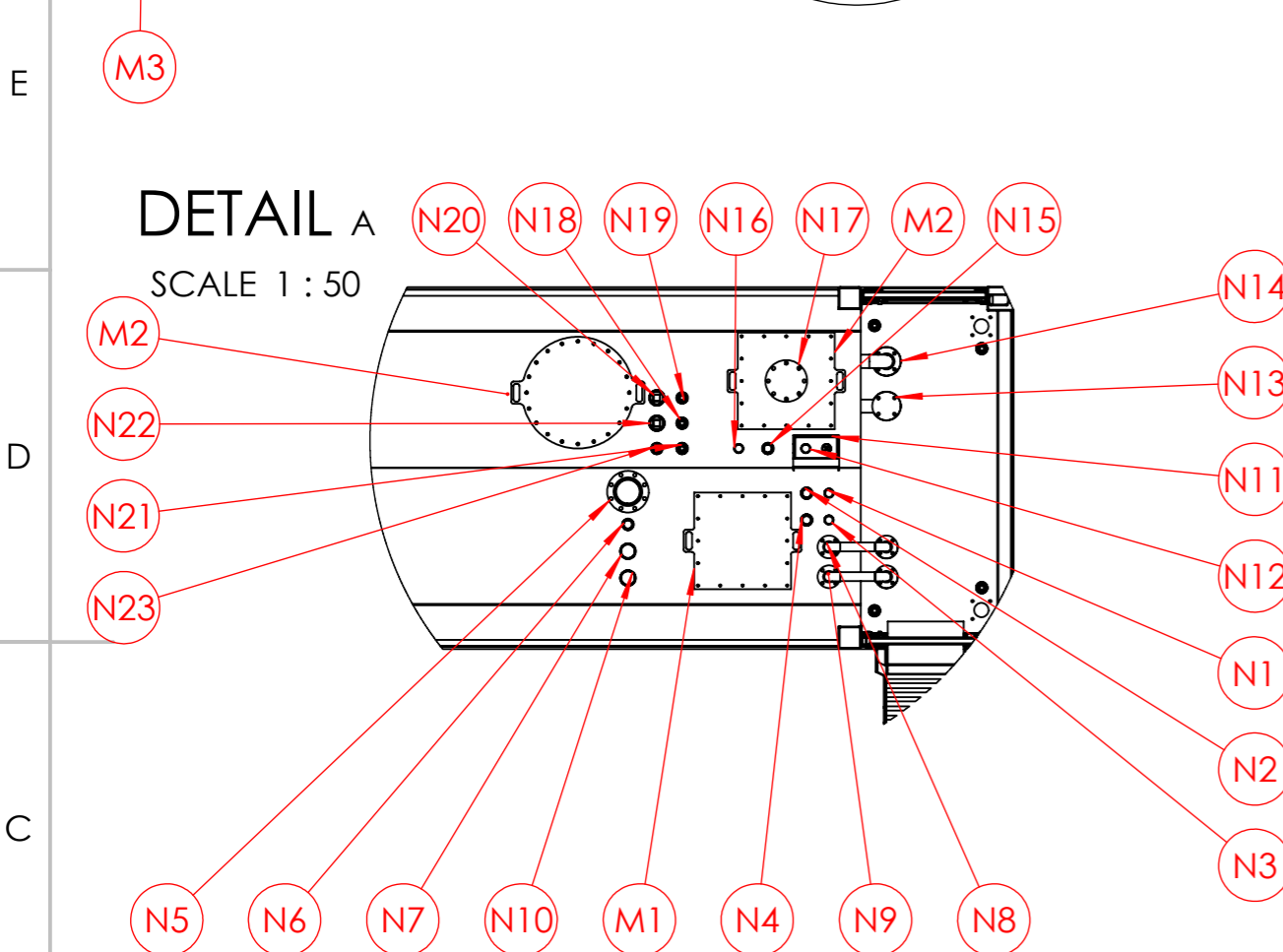
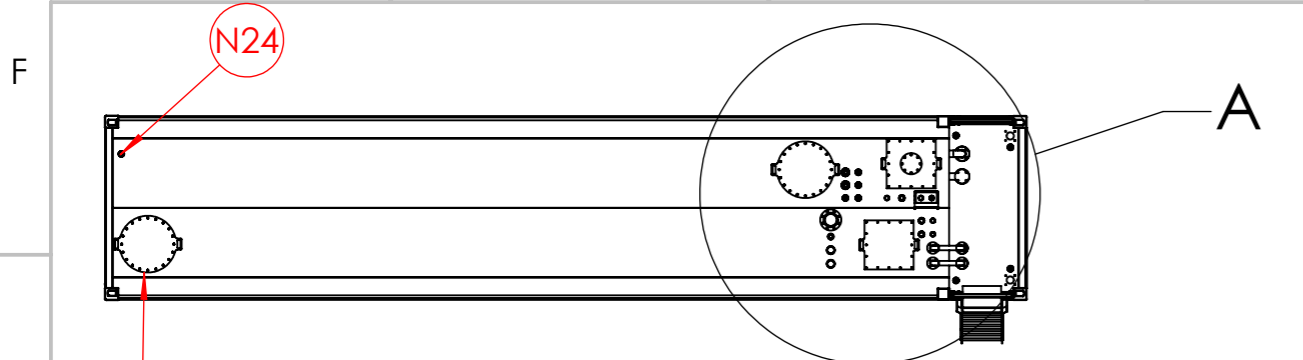


8 7 6 5 4 3 2 1



Nozzle ID	Connection Type	Service
AdBlue Tank		
N1	DN50 - ISO4144 - BSP Male	AdBlue Interstitial Dip (Capped)
N2	DN50 - ISO4144 - BSP Male	AdBlue Dip (Capped)
N3	DN50 - ISO4144 - BSP Socket	AdBlue Spare (Plugged)
N4	DN50 - ISO4144 - BSP Socket	AdBlue Spare (Plugged)
N5	DN280 ANSI 150 Flange	AdBlue AdBlue Pump Access Blind Flange
N6	DN50 - ISO4144 - BSP Male	AdBlue Spare (Plugged)
N7	DN80 - ISO4144 - BSP Socket	AdBlue Spare (Plugged)
N8	DN50 ANSI 150 Flange	AdBlue Primary Fill (c/w Ball Valve, Check Wafer, Type F camlock and Dust cap)
N9	DN50 ANSI 150 Flange	AdBlue Primary Suction (c/w Foot valve/anti syphon valve)
N10	DN80 - ISO4144 - BSP Socket	AdBlue Spare (Plugged)
M1	Square Flange (L,W=650mm)	AdBlue Primary Manway
Diesel Tank		
N11	DN50 - ISO4144 - BSP Male	Diesel Dip (Capped)
N12	DN50 - ISO4144 - BSP Male	Diesel Interstitial Dip (Capped)
N13	DN80 ANSI 150 Flange	Diesel Primary Suction with Prime Point
N14	DN80 ANSI 150 Flange	Diesel Primary Fill with Prime Point (c/w Ball Valve, Check Wafer, Type F camlock and Dust cap)
N15	DN50 - ISO4144 - BSP Socket	Diesel Interstitial Vet (Capped)
N16	DN50 - ISO4144 - BSP Socket	Secondary suction With Foot valve/Anti-syphon (Plugged)
N17	DN280 ANSI 150 Flange	Inspection Hatch
N18	DN50 - ISO4144 - BSP Socket	Diesel Spare (Plugged)
N19	DN50 - ISO4144 - BSP Socket	Diesel Spare (Plugged)
N20	DN80 - ISO4144 - BSP Socket	Diesel Spare (Plugged)
N21	DN80 - ISO4144 - BSP Socket	Diesel Spare (Plugged)
N22	DN80 - ISO4144 - BSP Socket	Diesel Spare (Plugged)
N23	DN50 - ISO4144 - BSP Socket	Diesel Spare (Plugged)
N24	DN50 - ISO4144 - BSP Socket	Diesel Spare (Plugged)
M2	Square Manway (L,W=650mm)	Diesel Primary Access
M3	Flanged (OD=750mm, ID=600mm)	Diesel Secondary Access
M4	Flanged (OD=750mm, ID=600mm)	Diesel Tertiary Access

<b>LTAB68</b>	
Tank Data	
DESIGN CODE	AS 1940
BUILT TO	AS1693, CAT.3
PLATE THICKNESS - Diesel	6MM/6MM Q235B
PLATE THICKNESS - AdBlue	3mm SS304
EXTERNAL DIMENSIONS	12192mm x 2438mm x 2896mm
GROSS VOLUME	59665L / 7368L
SAFE VOLUME	56680L / 7000L
TARE WEIGHT	14104KG

**PETRO INDUSTRIAL**  
 14 Business DR  
 PO Box 407  
 Narangba QLD 4504  
 p: 07 3204 9558  
 e: sales@petroindustrial.com.au

Customer Sign Off

Name:		Company:		Position:		Signature:		COPYRIGHT NOTICE This drawing remains property of Petro Industrial Pty Ltd and is not intended for distribution	
REV	DATE	REVISION DESCRIPTION	CHKD	APPR	DATE	REFERENCE DRAWING	TITLE: LTAB68	DRAWN BY:	CHECK DRW:
MATERIAL: Diesel - Q235B. ABlue - SS304							DRAWING SIZE: A3		
FINISH: RAL9003: Single White							CLIENT:		PROJECT NO:
PAGE: 1 OF 1							SCALE 1:100		DRAWING NUMBER: LTAB68

8 7 6 5 4 3 2 1