

# PETRO INDUSTRIAL

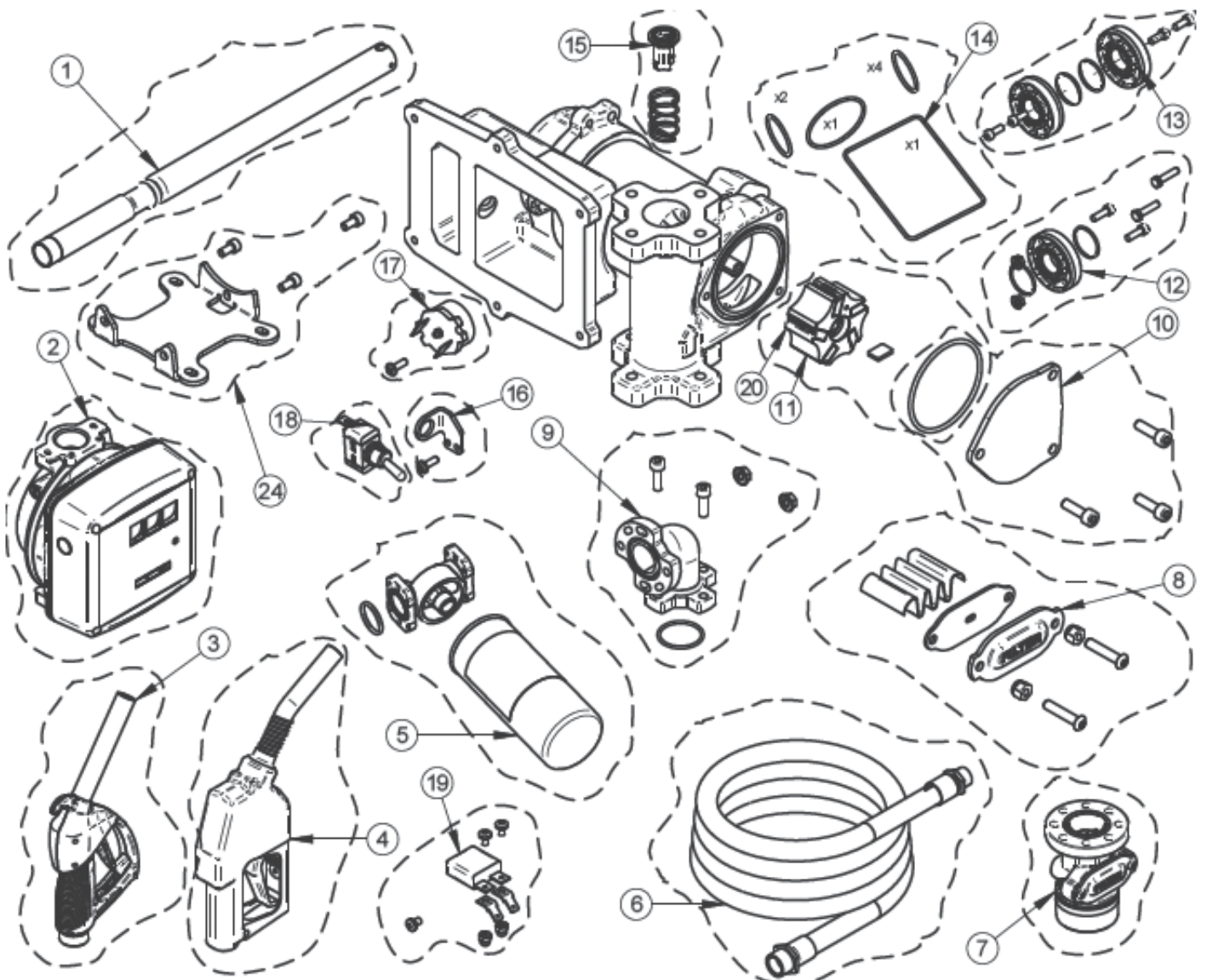


petroind.com



**PIUSI**

## EX50 PUMP 12V DC 50LPM



**SPARE PARTS LIST COD. F00372010 (EX) DRUM EX50 12 V DC ATEX /AUTO/F/4MT**

Pos.	Material Code	Description	Qty	UM
0001	F08934020	TELESCOPIC STEEL PIPE 1"BSP 1100 MM	1	PC
0003	F00613020	(Ex) AUTOMATIC NOZZLE 60 1in ATEX	1	PC
0005	F18796000	HEAD BSP+WATER CAPTOR FILTER-CARTR. (£)	1	PC
0006	F18151000	GASOLINE HOSE D.20 L=4m 1'x1'-PARKER	1	PC
0007	F17163000	2" BSP DRUM CONNECTOR WITH VALVE	1	PC
0008	R18792000	KIT FILTER DRUM-CONNECTOR (£)	1	PC
0009	F18791000	KIT MANIFOLD+SCREWS+O-RING EX50 (£)	1	PC
0010	R18794000	KIT COVER CHAMBER EX50 ATEX (£)	1	PC
0011	R18090000	KIT ROTOR w/KEY FOR EX50 UL-ATEX	1	PC
0014	R18801000	KIT GASKETS\O-RINGS PUMP EX50 (£)	1	PC
0015	R18793000	KIT BY-PASS PUMP EX50 NEW (£)	1	PC
0016	R1732600A	BRACKET FOR SWITCH - PUMP EX50	1	PC
0017	R17095000	PHENOLIC THERMAL PROTECTOR	1	PC
0018	R17027000	SWITCH EX50 (£)	1	PC
0020	R18700000	KIT NR. 5 BLADES + NR. 5 SPRING EX50	1	PC
9015	R18805000	KIT BY-PASS PUMP EX50 "OLD" (£)	1	PC

**SPARE PARTS LIST COD. F00372000 (EX) DRUM EX50 12 V DC ATEX /MAN/F/4MT**

Pos.	Material Code	Description	Qty	UM
0001	F08934020	TELESCOPIC STEEL PIPE 1"BSP 1100 MM	1	PC
0003	00065003A	SELF 3000 1in GAS UNLEADED SPOUT W/O LOC	1	PC
0005	F18796000	HEAD BSP+WATER CAPTOR FILTER-CARTR. (£)	1	PC
0006	F18151000	GASOLINE HOSE D.20 L=4m 1'x1'-PARKER	1	PC
0007	F17163000	2" BSP DRUM CONNECTOR WITH VALVE	1	PC
0008	R18792000	KIT FILTER DRUM-CONNECTOR (£)	1	PC
0009	F18791000	KIT MANIFOLD+SCREWS+O-RING EX50 (£)	1	PC
0010	R18794000	KIT COVER CHAMBER EX50 ATEX (£)	1	PC
0011	R18090000	KIT ROTOR w/KEY FOR EX50 UL-ATEX	1	PC
0014	R18801000	KIT GASKETS\O-RINGS PUMP EX50 (£)	1	PC
0015	R18793000	KIT BY-PASS PUMP EX50 NEW (£)	1	PC
0016	R1732600A	BRACKET FOR SWITCH - PUMP EX50	1	PC
0017	R17095000	PHENOLIC THERMAL PROTECTOR	1	PC
0018	R17027000	SWITCH EX50 (£)	1	PC
0020	R18700000	KIT NR. 5 BLADES + NR. 5 SPRING EX50	1	PC
9015	R18805000	KIT BY-PASS PUMP EX50 "OLD" (£)	1	PC

**SPARE PARTS LIST COD. F00374010 (EX) DRUM EX50 230V/50 ATEX /AUTO/F/4MT**

Pos.	Material Code	Description	Qty	UM
0001	F08934020	TELESCOPIC STEEL PIPE 1"BSP 1100 MM	1	PC
0004	F00613020	(Ex) AUTOMATIC NOZZLE 60 1in ATEX	1	PC
0005	F18796000	HEAD BSP+WATER CAPTOR FILTER-CARTR. (£)	1	PC
0006	F18151000	GASOLINE HOSE D.20 L=4m 1'x1'-PARKER	1	PC
0007	F17163000	2" BSP DRUM CONNECTOR WITH VALVE	1	PC
0008	R18792000	KIT FILTER DRUM-CONNECTOR (£)	1	PC
0009	F18791000	KIT MANIFOLD+SCREWS+O-RING EX50 (£)	1	PC
0010	R18794000	KIT COVER CHAMBER EX50 ATEX (£)	1	PC
0011	R18090000	KIT ROTOR w/KEY FOR EX50 UL-ATEX	1	PC
0014	R18801000	KIT GASKETS\O-RINGS PUMP EX50 (£)	1	PC
0015	R18793000	KIT BY-PASS PUMP EX50 NEW (£)	1	PC
0016	R1732600A	BRACKET FOR SWITCH - PUMP EX50	1	PC
0018	R17027000	SWITCH EX50 (£)	1	PC
0020	R18700000	KIT NR. 5 BLADES + NR. 5 SPRING EX50	1	PC
9015	R18805000	KIT BY-PASS PUMP EX50 "OLD" (£)	1	PC

**SPARE PARTS LIST COD. F00375000 (EX) DRUM EX50 33 12 V DC ATEX /MAN/F/4M**

Pos.	Material Code	Description	Qty	UM
0001	F08934020	TELESCOPIC STEEL PIPE 1"BSP 1100 MM	1	PC
0002	F00570010	(Ex) K33 METER VER.B ATEX	1	PC
0003	00065003A	SELF 3000 1in GAS UNLEADED SPOUT W/O LOC	1	PC
0005	F18796000	HEAD BSP+WATER CAPTOR FILTER-CARTR. (£)	1	PC
0006	F18151000	GASOLINE HOSE D.20 L=4m 1'x1'-PARKER	1	PC
0007	F17163000	2" BSP DRUM CONNECTOR WITH VALVE	1	PC
0008	R18792000	KIT FILTER DRUM-CONNECTOR (£)	1	PC
0009	F18791000	KIT MANIFOLD+SCREWS+O-RING EX50 (£)	1	PC
0010	R18794000	KIT COVER CHAMBER EX50 ATEX (£)	1	PC
0011	R18090000	KIT ROTOR w/KEY FOR EX50 UL-ATEX	1	PC
0012	F18802000	KIT CONNECTION PUMP EX50 - K33 (£)	1	PC
0014	R18801000	KIT GASKETS\O-RINGS PUMP EX50 (£)	1	PC
0015	R18793000	KIT BY-PASS PUMP EX50 NEW (£)	1	PC
0016	R1732600A	BRACKET FOR SWITCH - PUMP EX50	1	PC
0017	R17095000	PHENOLIC THERMAL PROTECTOR	1	PC
0018	R17027000	SWITCH EX50 (£)	1	PC
0020	R18700000	KIT NR. 5 BLADES + NR. 5 SPRING EX50	1	PC
9015	R18805000	KIT BY-PASS PUMP EX50 "OLD" (£)	1	PC

**SPARE PARTS LIST COD. F00371000 (EX) EX50 12 V DC ATEX**

Pos.	Material Code	Description	Qty	UM
0010	R18794000	KIT COVER CHAMBER EX50 ATEX (£)	1	PC
0011	R18090000	KIT ROTOR w/KEY FOR EX50 UL-ATEX	1	PC
0013	F18176000	KIT FLANGE EX50 BSP (£)	1	PC
0014	R18801000	KIT GASKETS\O-RINGS PUMP EX50 (£)	1	PC
0015	R18793000	KIT BY-PASS PUMP EX50 NEW (£)	1	PC
0016	R1732600A	BRACKET FOR SWITCH - PUMP EX50	1	PC
0017	R17095000	PHENOLIC THERMAL PROTECTOR	1	PC
0018	R17027000	SWITCH EX50 (£)	1	PC
0020	R18700000	KIT NR. 5 BLADES + NR. 5 SPRING EX50 1 PC	1	PC
0024	R18089000	KIT FOOT PLATE PUMP EX50 (£)	1	PC
9015	R18805000	KIT BY-PASS PUMP EX50 "OLD" (£)	1	PC

**SPARE PARTS LIST COD. F00373000 (EX) EX50 230V/50HZ ATEX**

Pos.	Material Code	Description	Qty	UM
0010	R18794000	KIT COVER CHAMBER EX50 ATEX (£)	1	PC
0011	R18090000	KIT ROTOR w/KEY FOR EX50 UL-ATEX	1	PC
0013	F18176000	KIT FLANGE EX50 BSP (£)	1	PC
0014	R18801000	KIT GASKETS\O-RINGS PUMP EX50 (£)	1	PC
0015	R18793000	KIT BY-PASS PUMP EX50 NEW (£)	1	PC
0016	R1732600A	BRACKET FOR SWITCH - PUMP EX50	1	PC
0018	R17027000	SWITCH EX50 (£)	1	PC
0020	R18700000	KIT NR. 5 BLADES + NR. 5 SPRING EX50 1 PC	1	PC
0024	R18089000	KIT FOOT PLATE PUMP EX50 (£)	1	PC
9015	R18805000	KIT BY-PASS PUMP EX50 "OLD" (£)	1	PC

# PETRO Contact Information

## AFRICA

### South Africa

Factory 1 - 16 Bentonite Street  
Alrode, Alberton, Johannesburg  
South Africa  
P: +27 (0)11 864 7758  
F: +27 (0) 11 864 1649  
E: sales@petroindustrial.co.za

## AUSTRALIA

### Eastern Australia

Factory 2, 106 Potassium Street  
PO Box 407  
Narangba QLD 4504  
P: 07 3204 9558  
F: 07 3293 4852  
E: sales@petroindustrial.com.au

## UAE

### Dubai

Office LB17330, Lobby Building 17  
Jebel Ali Free Zone  
PO Box 18602  
Dubai, United Arab Emirates  
P: +971 488 76688  
F: +971 488 76932  
E: salesuae@petroind.com

### Western Australia

2 Competition Way  
Wangara WA 6065  
P: 08 6305 0855  
F: 08 6305 0319  
E: sales@petroindustrial.com.au

# PETRO INDUSTRIAL



[petroind.com](http://petroind.com)