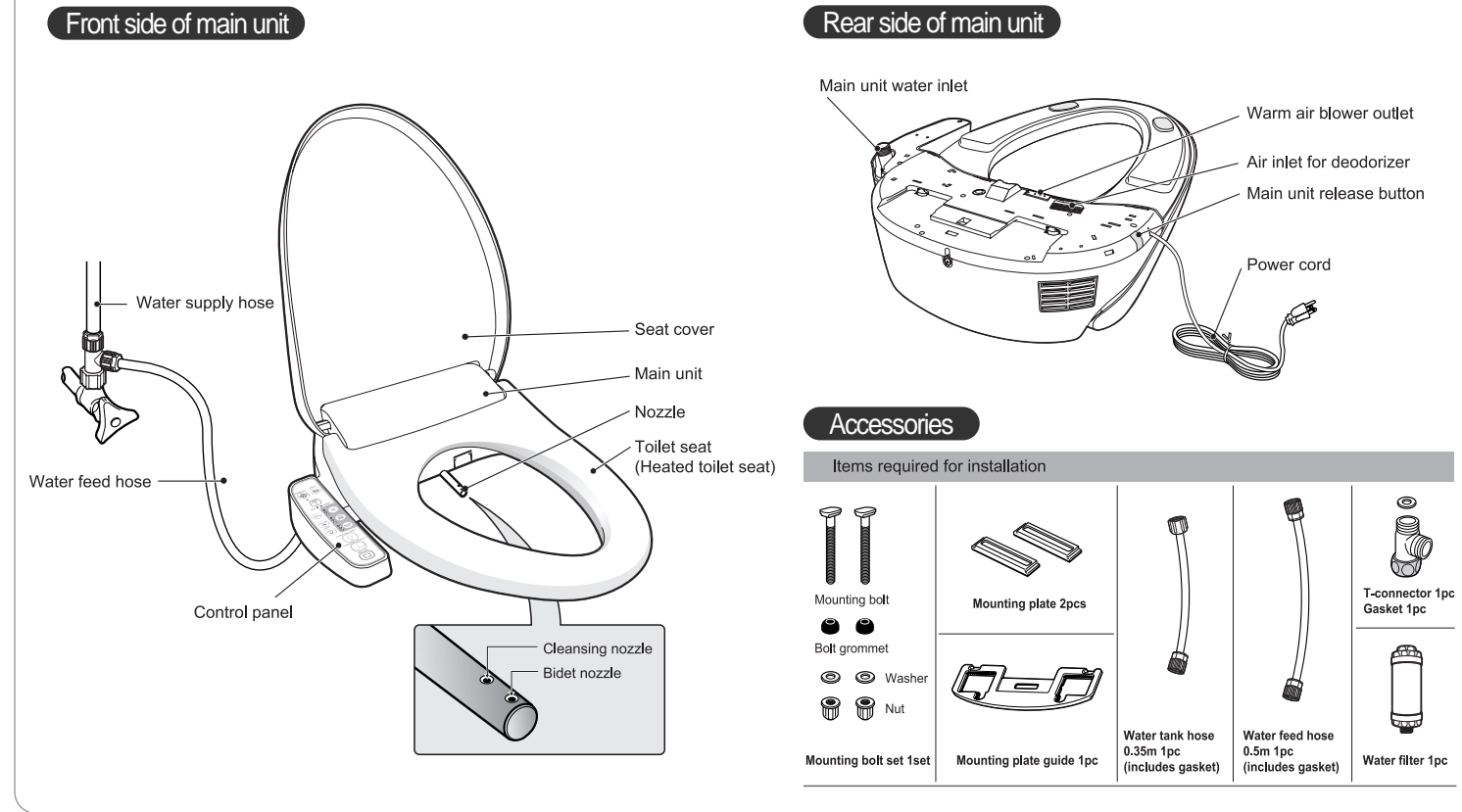


novita

Instruction and Installation Manual

BN300 series (BN310/ BN310S/ BN330/ BN330S/ BN350/ BN350S)

Name of components



Safety Instructions

• These instructions are intended to ensure the safety of users and to prevent property damage. • Please read the contents carefully and use the product correctly.

- WARNING** If the instruction is not followed, it may lead to death or injury of the person who failed to follow it.
- CAUTION** If the instruction is not followed, it may lead to injury and/or property damage.
- Acts prohibited** Users are required not to do any acts under this sign.
- Forced instruction** Users are required to strictly follow the instructions with this marking.

Exemption from liability

- Manufacturer takes no responsibility for any damages resulting from natural disasters such as earthquakes, lightning and wind damage and flooding, fires not caused by the manufacturer or the bidet product covered by this manual, other accidents, consumer mistakes and/or misuse and abuse of the product or the use of the product under abnormal condition.
- Manufacturer takes no responsibility for any incidental damages resulting from the use of the product or inability to use the product (lost profits or suspension of business, etc.).
- Manufacturer takes no responsibility for any damages resulting from the failure to observe the contents contained in this manual.

Safety warning

- WARNING** Never connect to electrical outlet for any product which has not been installed to toilet bowl and to which water supply hose has not been connected.
 - It may lead to a fire or malfunction.
- WARNING** Solely use an electrical outlet of AC120V with rated current of 15A or higher.
 - This product is for 120V only.
 - There is a risk of heat generation or fire outbreak.
 - Make sure that the power plug is securely connected to the outlet.
- WARNING** Never connect the power plug of other product in the toilet such as ventilator or any electrical heater to the outlet to which bidet power plug is connected.
- WARNING** Never try to use a malfunctioning product as is. This product is only intended to be used in toilet room and should not be used for any other purpose.
 - If a malfunctioning product is used as is, it may lead to a fire, electric shock or water leakage. Please make a service call to A/S center before using it.
- WARNING** Never place the product in water.
 - It may lead to a malfunction or electric shock.
- WARNING** For water supply, use city water only. Never connect industrial water or recycled water supply to the product.
 - Otherwise, it may lead to skin irritation, skin disorder and cystitis. Furthermore, it may also cause a malfunctioning of the product.
- WARNING** Never use damaged power cord, plug or loose electrical outlet.
 - In such cases, contact the customer service center for a replacement or repair. Otherwise, it may result in a fire or electric shock.

- Disassembly Prohibited** Never disassemble, modify or repair the product on your own. Please be careful so that no foreign materials may get into the product.
 - Otherwise, it may lead to a fire, electric shock or injury.
 - For repair of the product, please contact the customer service center.
- Never place unit in water** Never water the main unit or power plug. Never place the product in the place where a lot of moisture exists.
 - Otherwise, it may result in a fire or electric shock. (Warranty service is not available if a malfunction has been caused due to the failure to follow this instruction)
- Ground properly connected** Use AC120V/60Hz electrical outlet which is properly grounded. Ground must be connected to prevent electric leakage or electric shock.
 - If not properly grounded, it may result in a malfunction and electric shock.
 - If your electrical outlet is not grounded, contact a utility company or electric service company in your area.
- Never touch the power plug with wet hands.**
 - If wet hands are used to insert or disconnect power plug to/from electric outlet, an electric shock or injury may be caused.
- Unplug the power cord** Be sure to disconnect the power plug from the electrical outlet for safety when cleaning the product or removing the product from toilet bowl.
 - Otherwise, it may lead to a malfunction and electric shock.
- No fire source** Never place, or throw into, lit cigarette or other fire source close to the product.
 - Otherwise, it may lead to a fire or malfunction.
- Keep the power plug dust-free** by removing the dust using a dry cloth.
- Make sure that a child would not put his/her hands or other objects into nozzle or warm air outlet.**
 - It may lead to burn.
 - It may lead to a fire or electric shock.
 - It may lead to a malfunctioning of the product.

Before installation

- Remove the existing toilet seat.**
 - Remove the seat by untightening the nut using a tool.

Note

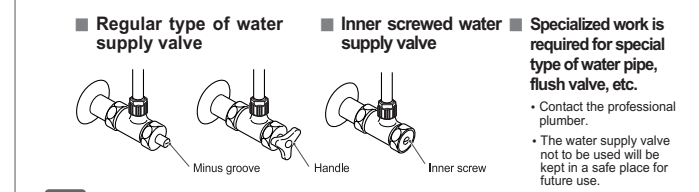
 - Keep the removed seat, seat cover, nuts, etc. in the safe place for future use just in case.
- Close the water supply valve.**
 - Rotate the water supply valve to the right hand side to close so that water may not come out.
- Separate the water tank hose.**
 - Rotate the water tank hose to the left hand side to separate.
- Connect the T-connector.**
 - Install the T-connector to the water supply valve (where the water tank hose was removed).

Caution

 - If excessive force is applied, it may lead to a risk of breakage.

Note

- Check the water supply valve at the toilet room. Additional optional accessories may be required in addition to the standard accessories. If required, contact the shop where the product was purchased.



- Connect the water tank hose.**
 - Water leakage may occur if a gasket is not used in the connections.
 - Hold the T-connector firmly when connecting the hose so the T-connector does not rotate.

Caution

 - For the water tank hose, the existing hose may be used as is. It is an optional item that may be purchased depending on installation environment and consumer needs.

How to install

- Install mounting plate guide to toilet bowl.**
 - Remove bolt grommets, washers and nuts from the mounting bolts and insert the mounting bolts through the mounting plate.
 - Make sure that the difference in flatness of mounting bolt catches the mounting plate guide.
 - Insert mounting bolts through the toilet bowl holes while aligning the bolts with the holes. Then install the grommets, washers, and nuts, in that order.

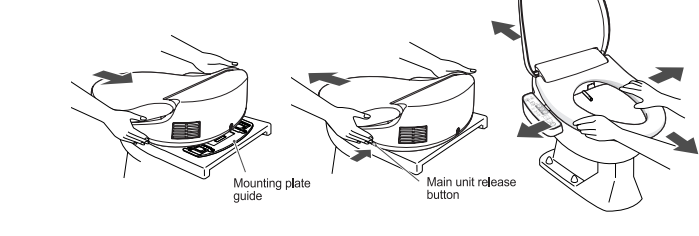
Note

 - Threaded bolts may loosen with time. If loose, retighten the nuts.

Caution

 - When attaching and fixing the main unit, make sure that the center of toilet bowl is aligned to the center of the main unit.
 - Use tools, etc. to firmly tighten.

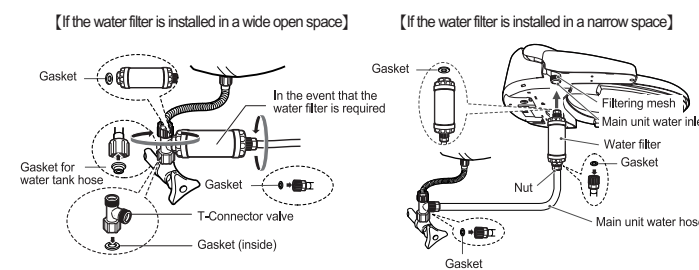
- Install the main unit.**
 - When attaching the bidet to the toilet bowl
 - Push the bidet all the way until click sound is heard while holding the bidet with both hands.
 - Move the bidet back and forth and right to left to check if it will not come off easily.
 - When disconnecting the bidet from toilet bowl.
 - Bidet can be separated easily.
 - Pull the bidet while pressing the main unit release button located on the right hand side of the main unit.



3 Connect the water feed hose.

- Connect the water feed hose to the main unit.**
- Check before connecting the hose to make sure there is a gasket in the hose joint.
 - Water leakage may occur if the gasket is not used.
 - Before attaching the water feed hose, check to make sure the filtering mesh is attached to the main unit water inlet.

How to install a water filter



Check product operation

- Check the operation of the product in the following order.**
- Insert the power plug into electrical outlet.
 - All lamps of control panel are blinking while nozzle is fully extended once and retracted (initial operation).

Caution

 - When inserting power plug, the product remains fully installed. If the plug is inserted with the product is erected, placed on the floor or tilted, malfunctioning may be caused.
 - Wait until automatic water supply is completed.
 - Automatic water supply lasts for 10 seconds in which time "water pressure lamps" blinks one by one.
 - Once the automatic water supply is completed, the product setting is as follows: water pressure medium level, warm water off, warm seat off.
 - As seen to the right side, operate the sitting sensor by pressing down the toilet seat next to the control panel.
 - Once the sitting is detected, clean nozzle for about 5 seconds.
 - Check "cleansing function" operation by pressing "cleansing" button.
 - Use hands or container, etc. when nozzle is extended so that water may not splash around.
 - After confirming that water came out, stop the operation by pressing "stop" button.
 - After nozzle is automatically cleaned three times, it is retracted.

Safety precautions

- CAUTION** When the product is used by any person falling under the following categories, helsh should be taken care of by his or her guardian so that helsh may not tumble down when taking a seat or standing from the seat. Child or elderly, any other person who is unable to take a seat or stand from there on his/her own.
- CAUTION** Never step on and stand on the seat or seat cover or rest excessively against the seat cover. Especially never be seated on the cover.
 - Never step on and stand on the main unit such as the seat or seat cover.
 - The product may be broken or it may cause a malfunction.
 - It may also result in deformation and injury when the product is broken.
- CAUTION** Pay attention to low temperature burn.
 - Low temperature burn may occur even when the skin remains in contact at relatively low temperature for a long time.
 - When the product is used by a child, elderly, patient of a disorder or any person who has difficulty in physical activities, make sure that the water temperature, seat temperature are set to LOW.
 - When the product is used by a healthy person at high temperature, make sure that the temperature is reset to LOW assuming that it may be used next time by a child, elderly or a patient of disorder.
- CAUTION** Make sure that the warm air outlet and nozzle part would not be contaminated with urine.
 - It may lead to bad smell and malfunctioning.
 - If the nozzle spray hole is blocked, remove the foreign material with a soft tooth brush, etc.
- CAUTION** Never try to pull or bend the hose of the connecting pipe forcibly.
 - It may lead to a malfunctioning or electric shock.
- CAUTION** Product will have to be installed in the place where no direct sun ray can reach.
 - Otherwise, it may lead to discoloration or fading of the original exterior color.
- CAUTION** When cleaning the product, never use the detergent (detergent for gas range, sink, toilet bowl, toilet room, acidic detergent, benzene, thinner, cleanser or stain remover, etc.) or spray deodorizer.
 - Otherwise, it may result in discoloration of exterior color, product breakage or electrical safety problems.



