

## ML-FL-25133/ML-FL-25183

## LED FLOOD LIGHT

### DESCRIPTION

This slim but powerful floodlight will transform any landscape lighting environment. Utilizing highly efficient drivers and next generation LEDs, this floodlight family starts at 15W and goes all the way up to 200W. With various mounting options, this floodlight is a workhorse for years to come.



### Specification Features



#### Construction

► Industrial grade die-cast aluminum alloy body is tough on the elements and allow the luminaire to withstand the harshest of conditions.

#### Optical System

► Next generation LEDs combined with the best-in-class UV stabilized commercial grade polycarbonate lens provide the most efficient lighting system. Optical system is engineered to provide professional grade light distribution and uniformity.

#### Electrical

► Long lasting LED coupled with UL Listed Drivers provide an electrical system that will stand the test of time. Universal voltage allow the luminaire to be used in multi-faceted environments

#### Finish

► Luminaire is electrostatically coated with UV stabilized powder coat providing years of worry-free service.

#### Certification

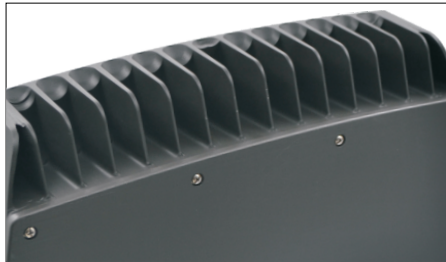
► cUL and UL Listed. Listed for Wet Locations. DLC Premium certified.

### Ordering information

| Model No.              | System Watts | Input Voltage | CRI | Color Temp       | Option       |             | Finish | Starting Temp |
|------------------------|--------------|---------------|-----|------------------|--------------|-------------|--------|---------------|
|                        |              |               |     |                  | Accessories  | Mounting    |        |               |
| ML-FL-25133-147W-4K-UV | 147W         | 120-277V      | 70+ | 3000 K           | 10kv Surge   | Slip Fitter | Bronze | -40°C         |
| ML-FL-25183-187W-4K-UV | 187W         |               |     | 4000 K<br>5000 K | Photocontrol | U Bracket   |        |               |

\* DISCLAIMER: This test report was produced in accordance with IES LM-79 photometric testing protocol for luminaires, using a single representative test fixture. Actual production units may vary from the values reported here by up to ±10%.

**Product Description**

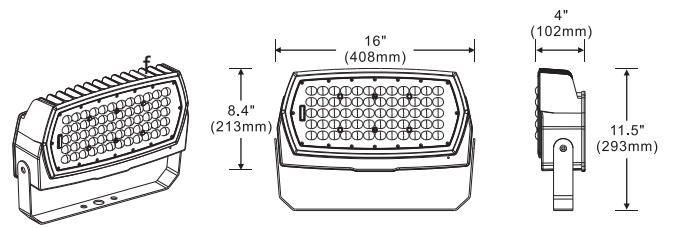


One piece die cast aluminum heatsink provides the most ideal heat dissipation, making the fixture cool to the touch.

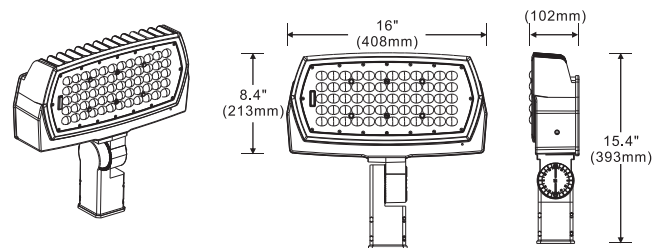
High performance optics provide maximum lighting solution to your needs.

IP 65 for both Optical and Electrical chamber. Standard 4 KV surge protection included.

**Product Dimensions**



ML-FL-25133/25183-U



ML-FL-25133/25183-SF

**Mounting Options**



Slip Fitter



u-Bracket

**Performance Data**

| Model NO.              | System Watts | Beam Angle | Lumens     | Lpw      | B | U | G |
|------------------------|--------------|------------|------------|----------|---|---|---|
| ML-FL-25133-147W-4K-UV | 147 W        | 80×120°    | 18294 lm** | 125 lm/W | 4 | 2 | 1 |
| ML-FL-25183-187W-4K-UV | 187 W        | 80×120°    | 23465 lm** | 125 lm/W | 4 | 2 | 1 |

\* DISCLAIMER: This test report was produced in accordance with IES LM-79 photometric testing protocol for luminaires, using a single representative test fixture. Actual production units may vary from the values reported here by up to ±10%.