



# MX315W

## Your advantages

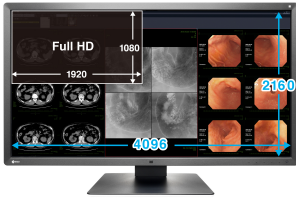


The 31.1" color monitor impresses with 4K resolution (4,096 x 2,160 pixels) that ensure crisper details. The MX315W also shines in terms of color purity and illumination thanks to the Digital Uniformity Equalizer. This allows the MX315W to correctly display hues and grayscale tones of radiological images across the entire screen. The DICOM display curve is preset during production and guarantees proper grayscale reproduction. The MX315W monitor features sensors for ambient light and calibration. Given its size and picture quality, the MX315W is particularly well suited for diagnosing cross-sectional imaging and viewing 3D reconstructions.

- ✓ 4K color display with consistently high and stable brightness
- ✓ greyscales with DICOM hue curve
- ✓ brightness 450 cd/m<sup>2</sup>, contrast 1300:1
- ✓ integrated sensor for automatic, precise calibration of white balance and the tonal value
- ✓ automatic luminance distribution control (Digital Uniformity Equalizer)
- ✓ set up for acceptance and consistency testing in accordance with DIN 6868-157 and QS-RL
- ✓ presence sensor means monitor is ready for immediate use whenever the user is in front of it
- ✓ ergonomic, attractive design
- ✓ compact dimensions, narrow bezels, and integrated power supply

## Features

### Excellent image quality for the finest details



Thanks to the high 8 Mega-pixels (color) resolution, a strong contrast ratio of 1300:1 and stable brightness of up to 450 cd/m<sup>2</sup>, the monitor offer excellent image quality. Even the differences

between the finest details are shown – regardless of your viewing angle. This is a great advantage if multiple physicians are looking at the screen.

### Perfectly designed for diagnostic use

Narrow black frontal bezels make this device ideal for use in dark environments. They make it easy to visually concentrate on the display. Meanwhile, a white bezel at the side of the monitor creates a fresh, clean look.



### Consistently secure image quality

The optional EIZO RadiCS software to secure image quality enables extensive maintenance and testing of monitors and includes calibration, acceptance and constancy testing, and the



archiving of all areas. If you are working on multiple stations, the use of the RadiNET Pro is recommended. This can be used to centrally control the calibration of all monitors, including data

history. This saves you a significant amount of time and ensures consistently high image quality across the entire setup. The basic version RadiCS LE is already included with the RadiForce GX, RX, and MX/MS models.

[Learn more about the RadiCS application classes](#)

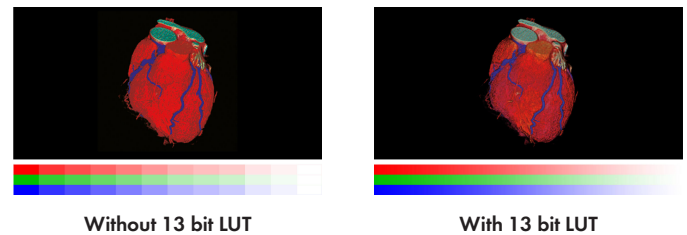
[Learn more about RadiCS LE software \(included in the delivery\)](#)

[Learn more about RadiCS software \(optionally available\)](#)

[Learn more about RadiNet Pro software \(optionally available\)](#)

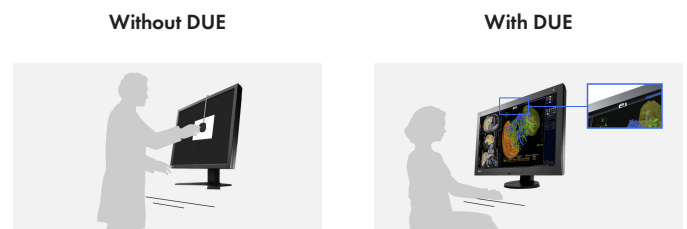
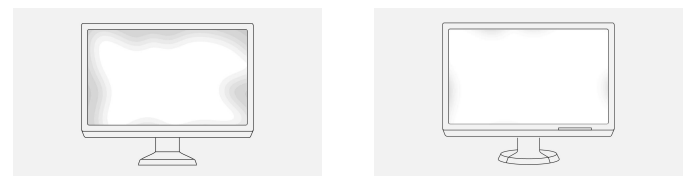
### One billion color tones thanks to 13 bit LUT

Color rendering is controlled by a 13 bit look-up table (LUT), up to 10 bits of which are available in the DisplayPort connection. This produces a resolution with a maximum of 1 billion color tones. The rendering characteristic and fine structures required for diagnostics can therefore be precisely identified.



### Balanced image quality thanks to an integrated front sensor

The precise calibration of white point and tone value characteristic curve is provided by an integrated front sensor (IFS). This measures the brightness and grayscales and calibrates the monitor autonomously according to the DICOM standard. The sensor works automatically, without restricting the field of vision of the monitor. You can save the costs, time, and effort of maintenance and rely on a consistently balanced image quality.



Without DUE

With DUE

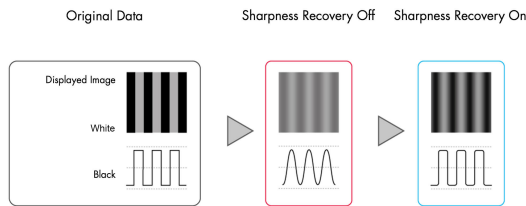
Without IFS

With IFS

## Features

### Blur reduction

LCD panels with a high brightness level tend to have more blurry image rendering thanks to over-framing than would be possible in comparison with an acquired exposure. Therefore, EIZO offers blur reduction anchored in monitor hardware. It retrieves details lost in the contours on the screen, meaning that the image is rendered as clearly as possible.

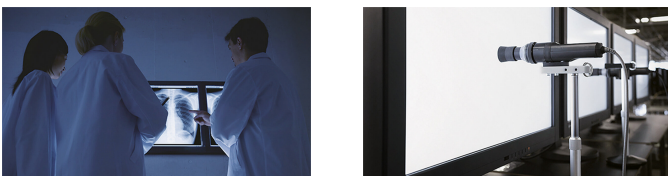


### Secure image quality thanks to AAPM/Euref/DIN compliance

The display properties, in particular brightness and contrast, are suited to the creation of image rendering systems compliant with DIN 6868-157. The DICOM GSDF characteristic is already precisely configured in the factory. This means that grayscales are consistent, which is vital for diagnostics.

The monitor meets the strictest medical, safety, and EMC emission standards. EIZO's QC software RadiCS enables you to perform brightness, grayscale and uniformity checks that comply with AAPM TG18, DIN 6868-157, and other QC standards.

[Overview RadiCS application classes I to VIII](#)



### Extended durations of use thanks to automatic shut down

The monitor has an automatic shut down option for the backlight (backlight saver). This extends the duration of use. Similar to a screen saver, the LEDs turn off when the screen is not being used.

The backlight saver is part of the [RadiCS software](#).

### Multi-monitor solutions without problems

Thanks to the signal input and output, you can link several RadiForce monitors through their DisplayPort interface. This means that you can realize multi-monitor solutions with the greatest of ease – without laborious and excessive cabling.



### Connections for two computers

DisplayPort and DVI-I input enable the connection of two image signals. You can therefore connect two computers simultaneously. You can switch between them automatically or manually, if desired.



### Two-screen solution with one monitor

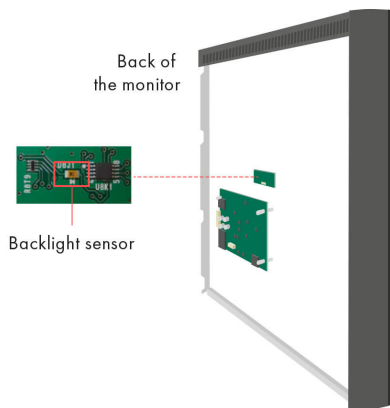
With the Picture-by-Picture function, two displays from separate input signals can be displayed simultaneously on a single monitor. A widescreen without annoying edges enables the simple and flexible use.



## Features

### Constant brightness during operation

A sensor for the backlight permanently determines the luminance of the monitor. The benefit: The defined and calibrated values are rendered exactly just seconds after the monitor is turned on and remain constant during the entire period of use. The sensor is invisibly integrated in the monitor.



### Work-and-Flow, Innovations to Help You View Your Images

Radiologists face an increasing amount of information on their screens, as modalities become increasingly digitalized. But imaging procedures now no longer need to be so complex, thanks to the unique Work-and-Flow technology from EIZO, featuring new functions developed specially to meet the requirements of radiologists. The RadiForce MX315W and RadiCS-LE software solution enable you to benefit from the Work-and-Flow functions.

### Hide-and-Seek, Fast Retrieval of Information

The Hide-and-Seek function allows you to easily hide whichever PinP windows you are currently not using. You can display the windows when you need them again by moving the mouse cursor to the edge of the screen. This means you can quickly and efficiently display reports, patient files and other information without needing an additional monitor.

### Switch-and-Go, Straightforward Operation Without Obstacles

The USB conversion takes place within the monitor with the Switch-and-Go function. This allows you to use a single set of keyboard and mouse at two different workstations at the same time. You can switch between the two workstations simply by moving the mouse cursor from one screen to the other. This ensures greater work efficiency and allows you to maintain a clear overview of your workstation.

### One monitor, many ports

It doesn't get easier than this: You can connect most of your devices, such as PC, laptop or cameras directly to the monitor because the monitor has a number of different ports. That makes your daily work easier.

### For precise diagnoses: EIZO MED-XN71 graphics card

The EIZO MED-XN71 graphics card supports the properties, functions, and settings of the RadiForce MX315W optimally. It enables precise diagnostics and can control several monitors simultaneously. EIZO offers technical support and a warranty service for all graphics cards. Therefore, we recommend using EIZO graphics cards.

[Display the specifications of the MED-XN71](#)



### Five-year warranty

EIZO grants a five-year warranty. This is possible thanks to the highly developed production process based on a simple principle of success: sophisticated and innovative monitor technology, made from high-end materials.



## Features

---

### Eye-friendly Comfort Light

EIZO offers a brand-new, easy-to-operate comfort light for radiologists who work in dark diagnosis rooms. The soft illuminance in the background of the screen reduces the strain on the eyes that frequently occurs due to constant light-dark changes between bright screens and objects in a dark environment.

[learn more about Radilight](#)



# Specification

## General

Item no.	MX315W
Case colors	Bicolor, black and white
Solutions	Medicine
Product line	RadiForce

## Display

RadiCS application classes	II, III, IV, V, VI, VIII
Screen size [in inches]	31.10
Screen size [in cm]	78.90
Format	17:9
Viewable image size (width x height)	697.9 x 368
Resolution in MP	8 Megapixels (color)
Ideal and recommended resolution	4096 x 2160 (4K)
Pixel Pitch Horizontal [ mm ]	0.17 x 0.17
Panel technology	IPS
Max. viewing angle horizontal	178 °
Max. viewing angle vertical	178 °
Number of colors or grayscale	1.07 billion colors (display port, 10 Bit), 16.7 million colors (display port, 8 Bit), 16.7 million colors (DVI, 8 Bit)
Max. brightness (typical) [in cd/m <sup>2</sup> ]	450
Preset brightness [in cd/m <sup>2</sup> ]	270
Max. dark room contrast (typical)	1300:1
Typical response time [black/white/black alternation]	20 ms
Backlight	LED

## Features

Color palette / look-up table	543 billion color tones / 13 Bit
Hardware calibration of brightness and light density characteristic curve	✓
Digital Uniformity Equalizer	✓
Picture-by-Picture/Picture-in-Picture	✓
Preset color/grayscale modes	DICOM, CAL1, CAL2, Text, sRGB, Custom
DICOM tone curve	✓
Backlight Sensor	✓
Integrated front-sensor	✓
Umgebungslichtsensor	✓
OSD language	de, en, fr, es, it, se, ja, zh
Signal inputs	2x DisplayPort, DVI-D
Multi-screen solution daisy-chained	1x DisplayPort 1.2
Video Signal	DisplayPort, DVI dual link (TMDS)
Input Signal Identification	✓
USB hub	2 Up-/ 3 Down-Stream, Rev. 2.0

## Electric data

Power consumption (typical) [in watt]	67.00
Maximum Power Consumption [in watt]	125
Power Save Mode [in watt]	1.60
Power Consumption Off [in watt]	0.00
Power Supply	AC 100-240V, 50/60Hz
Power Management	DVI-DMPM, DisplayPort Version 1.2a
Integrated power unit	✓

## Dimensions & Weights

Weight [in kilograms]	11.70
Weight Without Stand [in kilograms]	7.50
Swivel (right/left)	35 °
Incline forward/backward	5 ° / 30 °
Height Adjustment Range [ mm ]	100
Hole Spacing	VESA standard 100 x 100 mm

## Certification & Standards

Certification	CE (Medical Device Directive), EN 60601-1, ANSI/AAMI ES60601-1, CSA C22.2 Nr. 601-1, IEC60601-1, VCCI-B, FCC-B, ICES-003-B (CAN), RCM, RoHS, China RoHS, WEEE, CCC, EAC
---------------	---

## Software & Accessories

Accompanying software and other accessories are available for download or on a CD	RadiCS LE
Additional Supply	Network cable, Signal cable DVI-D - DVI-D, 2x signal cable DisplayPort - DisplayPort, Short DisplayPort signal cable - DisplayPort, USB 2.0 cable, EIZO LCD Utility Disk (incl. PDF manual)
Accessory	RadiCS (RadiCS quality assurance for RadiForce screens), RadiNET Pro (RadiNET Pro for large hospitals), RadiLight (Comfort Light for Reading Rooms - Easily attachable light for RadiForce medical LCD monitors.)
Recommended graphics card	MED-XN71

## Warranty

Warranty and service	5 years including on-site replacement service
----------------------	---