

Installation instructions

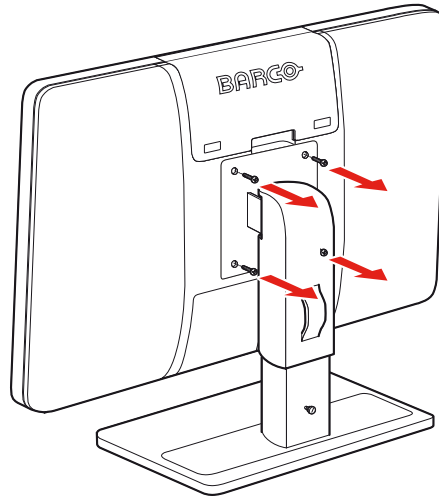
K5903076-00

Install a MDRC-2122 on a VESA arm

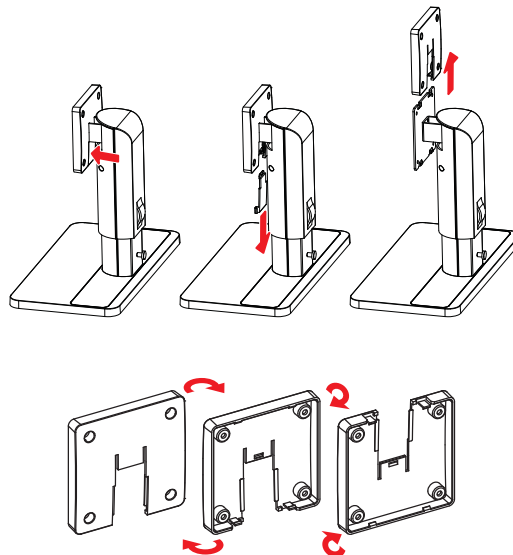
To remove the display from the stand:

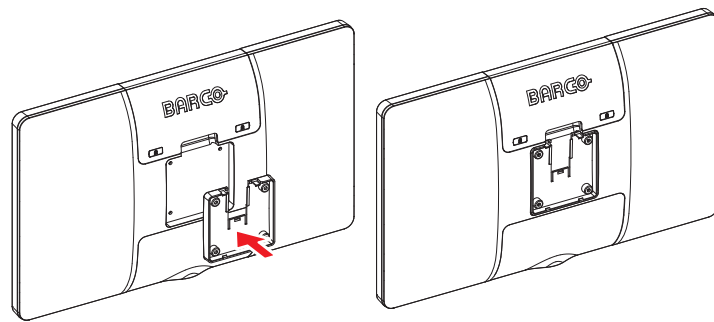
The display panel, standard attached to a stand, is compatible with the VESA 75 mm standard.

1. Put the display face down on a clean and soft surface. Be carefull not to damage the panel.



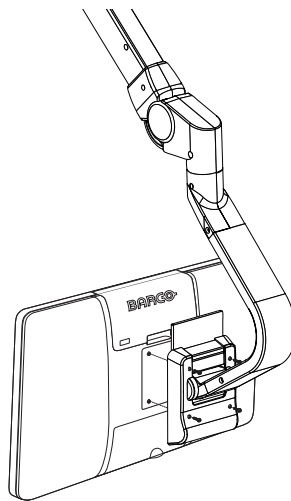
2. While supporting the foot with one hand, unscrew the 4 screws fixing the foot.
3. Remove the foot.
4. Remove the vesa cover of the foot. Push the clip at the rear bottom side of the cover while pulling it down. Pull the cover upwards. Turn around the cover and put it back at the display as shown in the drawings below.





To mount the vesa arm:

1. Remove the display from the stand as described in previous chapter.
2. Use 4 M4 screws to attach the panel to the VESA arm. Please make sure that the length of the screws is 25 mm.



3. Plug the power cable in the power connector of the display panel. Attach the other side of the cable to the power cable of the VESA arm.

