

BUILD YOUR OWN

# PRISMIC™

DOG  
LANTERN



COMPLEXITY

Scan  
For Video  
Instructions

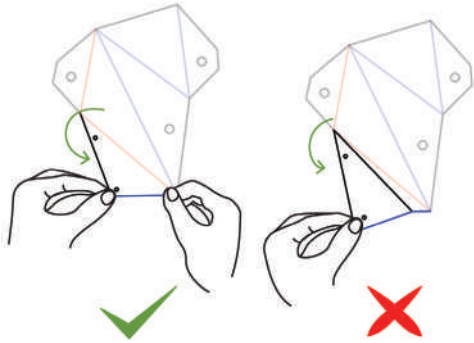


# INSTRUCTION BOOKLET



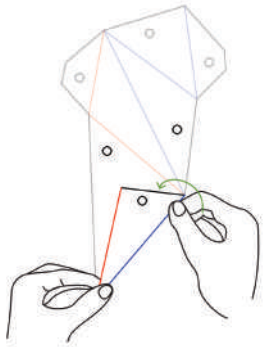


To fold each crease, secure one side of the crease between one thumb and index finger and use your other hand to fold the other side of the crease in the direction indicated.



The smaller creases will fold with one motion, whereas the longer ones may need you to create a couple of times along its length until the panel starts to fold.

Make sure that the fold is consistent along the length of the crease, so the edge is nice and even.



Start folding at one end of the panel and work your way to the other side. When you reach the end of the panel, make any indicated connections with the **Locking Pins**.

## GETTING STARTED

A **PRISMIC™** build can take some time and needs a clean and flat surface where you can lay out the panels and have enough room to work. A desk or large table is ideal.

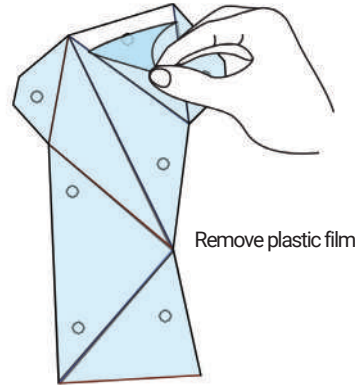
**1** Start off by taking the **Panels, Locking Pins** and **LED Light Strings** out of the package. Set the LED lights aside. You won't need them for a while.

**2** Find a safe place on your workspace to place the locking pins. You'll need these on each step, so it's a good idea to keep them within easy reach.

**3** Make sure that each panel matches the location and shape exactly. Some panels look alike, even when flipped over. To make sure your project goes smoothly, match them exactly as laid out on this diagram.

**4** The panels have protective film on both sides of the panels. You can remove it all now, making sure you place the panels back in the correct position before continuing. Alternatively, you can remove the protective film at each step.

Before you start folding and bending the panels remove the protective film from both sides of the panel.



**5** Double check that you have the panels in the correct position before starting off, and if they are, it's time to get started with the assembly process!

### REMEMBER THE BASICS:

Remove **protective film** from both sides of the panel before folding.

**Outside of the panel** is facing you, the **inside** faces down as laid out in Step 1.

**RED LINE** = fold **UP** towards you

**BLUE LINE** = fold **DOWN** away from you

**Flat Edges** on **OUTSIDE** of Tabs, and tuck **tabs onto the INSIDE** of your **PRISMIC™**.

Push **locking pins INWARDS** (pointy end goes in).

**If you need help, ask an adult to help out.**

For each step, there is a main layout of all the panels indicating which to use for the step.

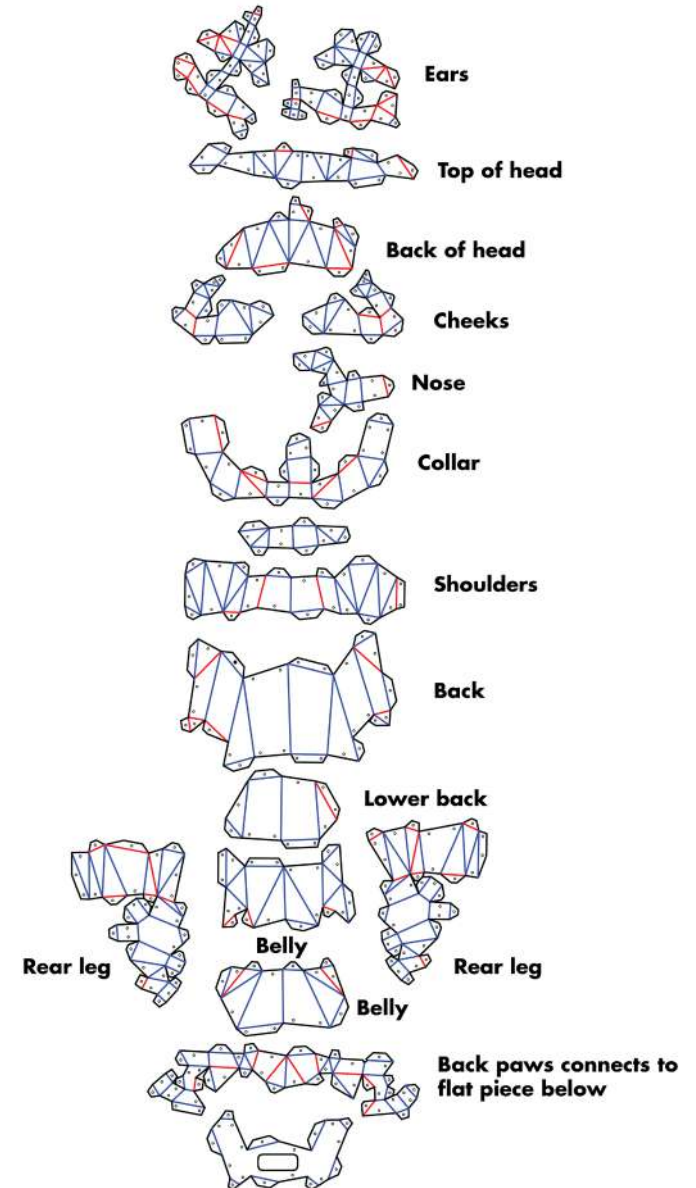
There is also a larger version of that same panel showing the fold lines and which Edges connect to which Tabs (if any on that panel), along with any additional notes for that step.

## Step 1

▶ [WWW.PLBFUN.COM/PRISMIC](http://WWW.PLBFUN.COM/PRISMIC)

● Take the panels and lay them out according to the diagram below. This will make it much easier to follow the steps for the instructions. This diagram will be shown in each step of the instructions and used to show you your progress and more easily identify the panels needed.

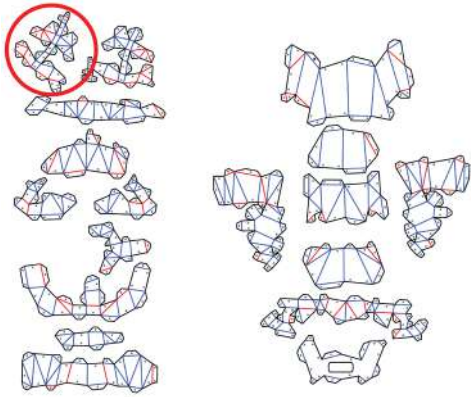
● You can remove the protective film from both sides of each panel now, or do them at each step as you go.



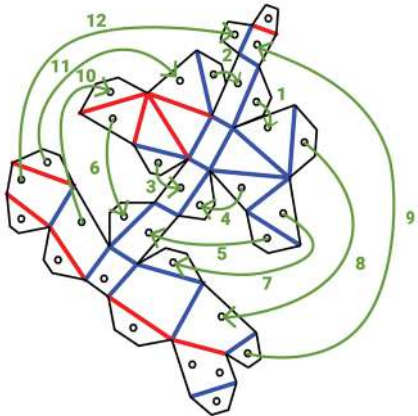
## Step 2

▶ [WWW.PLBFUN.COM/PRISMIC](http://WWW.PLBFUN.COM/PRISMIC)

- Using the highlighted panel



- Fold/bend the panel along the red and blue lines. Then connect the highlighted **Flat Edges** to the highlighted **Tabs** by matching up the holes (connected by lines below) and fitting a locking pin in place (this will help determine how far you need to fold/bend the lines).



- Make the connections in the order specified and the pieces will form into place as you go to make the left ear of the dog.
- When you get to connections 10 through 12, gently press in the middle of the ear to make the holes match up more easily.



- You should end up with something like this:

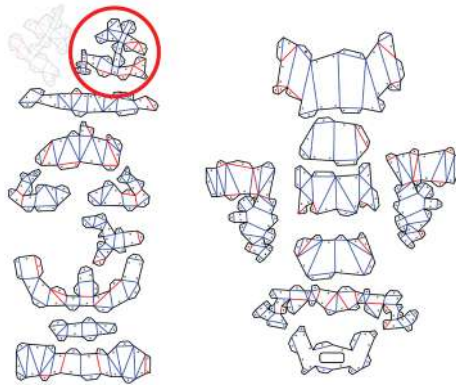


- Once you have this piece folded and connected, Set it aside for now and move on to the next step.

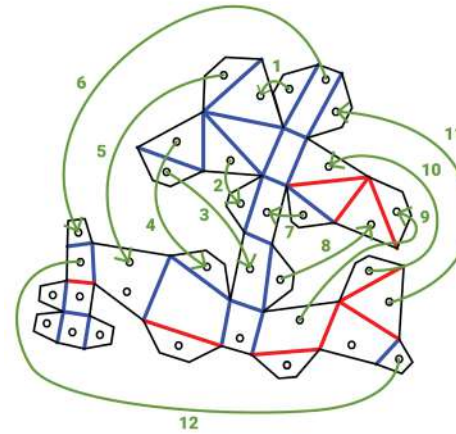
## Step 3

▶ [WWW.PLBFUN.COM/PRISMIC](http://WWW.PLBFUN.COM/PRISMIC)

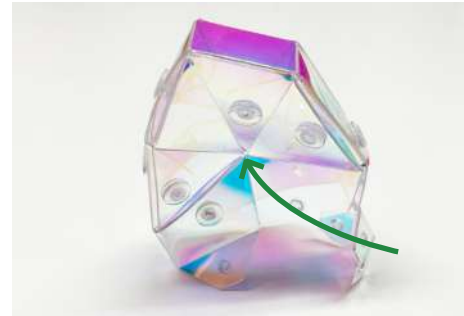
- Pick up the highlighted panel.



- Bend the red and blue edges accordingly and make the connections in green.
- Make the connections in the order specified and the pieces will form into place as you go to make the right ear of the dog.



- When you get to connections 9 through 12, gently press in the middle of the ear to make the holes match up more easily.



- You should have something that looks like this:



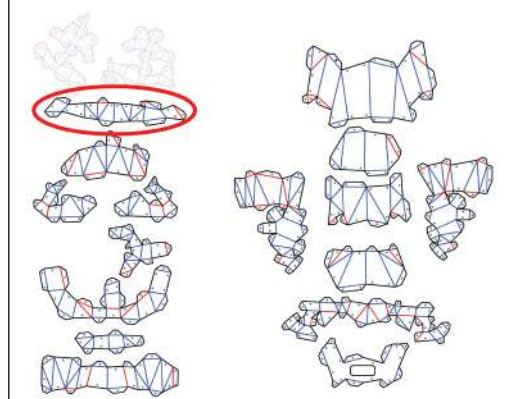
- Once you have this piece folded and connected, you should have the 2 ears of the dog ready to connect after the next step.



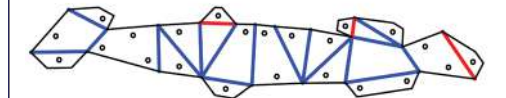
## Step 4

▶ [WWW.PLBFUN.COM/PRISMIC](http://WWW.PLBFUN.COM/PRISMIC)

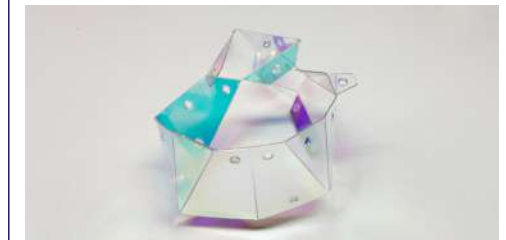
- Pick up the highlighted panel.



- Bend the red and blue edges accordingly. This panel does not have connections within itself.



- You should have something that looks like this:

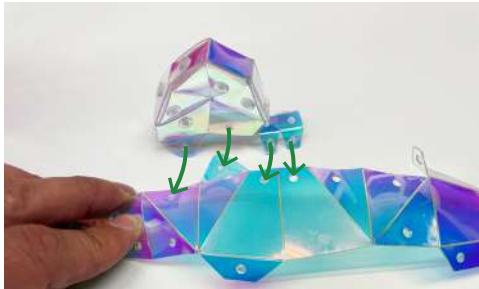


- Once you have this piece folded, you'll join it to the other 2 and create the top side of the Dog's head.

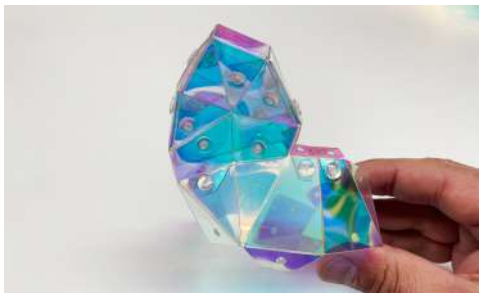
## Step 5

▶ [WWW.PLBFUN.COM/PRISMIC](http://WWW.PLBFUN.COM/PRISMIC)

- Take the right ear you created in **Step 3** and connect it to the band from **Step 4** by lining up the pieces as shown and making the indicated connections.



- You should end up with something that looks like this:



## Step 6

▶ [WWW.PLBFUN.COM/PRISMIC](http://WWW.PLBFUN.COM/PRISMIC)

- Take the left ear you created in **Step 2** and connect it to the band from **Step 4** and right ear by lining up the pieces as shown and making the indicated connections.



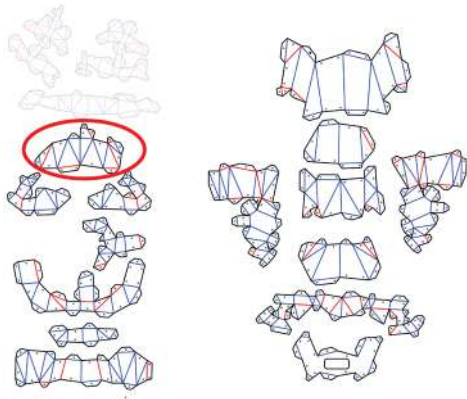
- You should end up with something that looks like this:



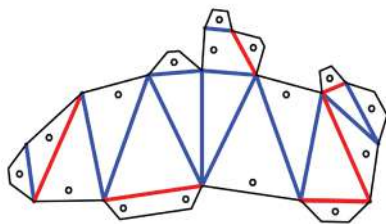
## Step 7

▶ [WWW.PLBFUN.COM/PRISMIC](http://WWW.PLBFUN.COM/PRISMIC)

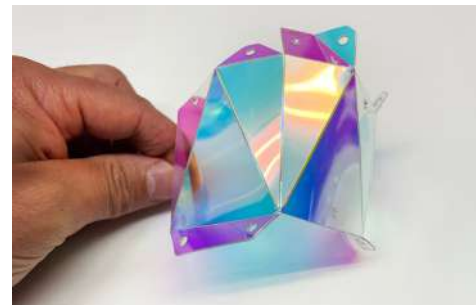
- Pick up the highlighted panel.



- Bend the red and blue edges accordingly. This panel does not have connections within itself.



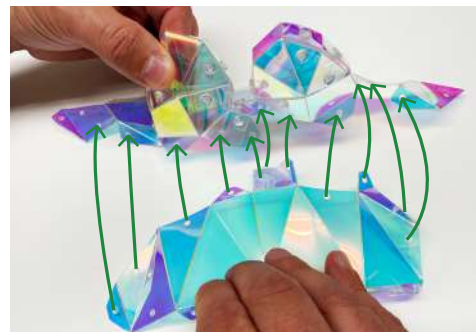
- This is the top of the back of the head and it will connect to the back of the ears
- You should end up with something that looks like this:



## Step 8

▶ [WWW.PLBFUN.COM/PRISMIC](http://WWW.PLBFUN.COM/PRISMIC)

- Take the piece you folded in the previous step and connect it to the rest by lining up the pieces as shown and making the indicated connections.



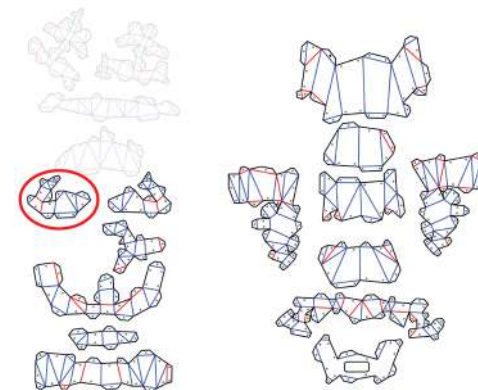
- You should end up with something that looks like this:



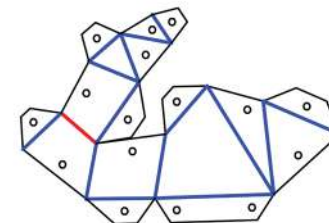
## Step 9

▶ [WWW.PLBFUN.COM/PRISMIC](http://WWW.PLBFUN.COM/PRISMIC)

- Pick up the highlighted panel.



- Bend the red and blue edges accordingly. This panel does not have connections within itself.



- Once you have this piece folded, You should have something that looks like this:



## Step 10

▶ [WWW.PLBFUN.COM/PRISMIC](http://WWW.PLBFUN.COM/PRISMIC)

- Attach piece from the last step to the top front to create the right cheek of the Dog, by lining up the pieces as shown and making the indicated connections.



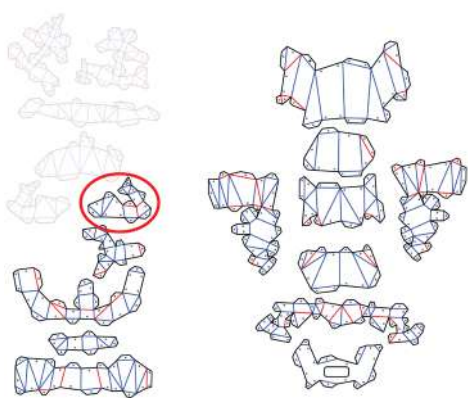
- You should end up with something that looks like this:



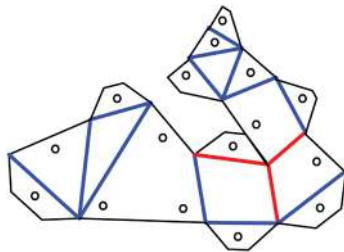
## Step 11

▶ [WWW.PLBFUN.COM/PRISMIC](http://WWW.PLBFUN.COM/PRISMIC)

- Pick up the highlighted panel.



- Bend the red and blue edges accordingly. This panel does not have connections within itself.



- Once you have this piece folded, You should have something that looks like this:



## Step 12

▶ [WWW.PLBFUN.COM/PRISMIC](http://WWW.PLBFUN.COM/PRISMIC)

- Connect the panel from the previous step to the head, creating the left cheek of the Dog, by lining up the pieces as shown and making the indicated connections.



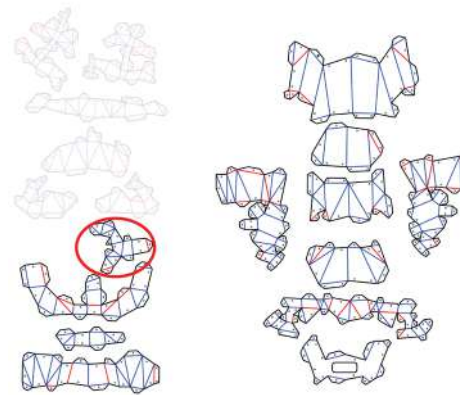
- Once you've made all the possible connections, the head should look like this:



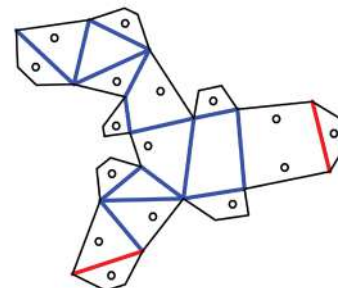
## Step 13

▶ [WWW.PLBFUN.COM/PRISMIC](http://WWW.PLBFUN.COM/PRISMIC)

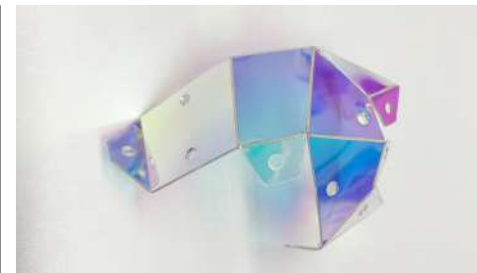
- Pick up the highlighted panel.



- Bend the red and blue edges accordingly. This panel does not have connections within itself.



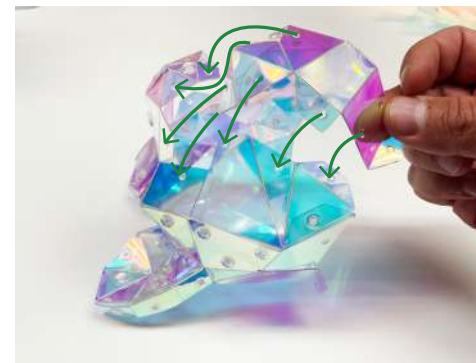
- Once you have this piece folded, You should have something that looks like this:



## Step 14

▶ [WWW.PLBFUN.COM/PRISMIC](http://WWW.PLBFUN.COM/PRISMIC)

- Connect together the panel from the previous step to the main assembly around the nose of the dog, by lining up the pieces as shown and making the indicated connections.



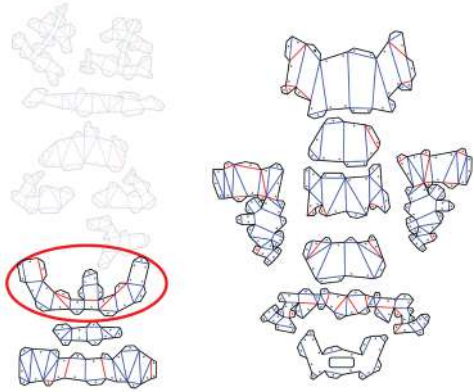
- Continue making connections all around the nose section.
- You should end up with something that looks like this:



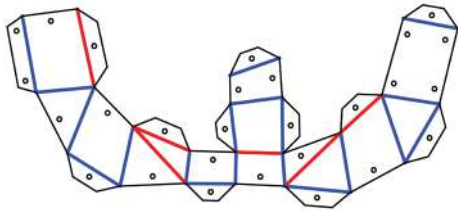
## Step 15

▶ [WWW.PLBFUN.COM/PRISMIC](http://WWW.PLBFUN.COM/PRISMIC)

- Pick up the highlighted panel.



- Bend the red and blue edges accordingly. This panel does not have connections within itself.



- Once you have this piece folded, You should have something that looks like this:



## Step 16

▶ [WWW.PLBFUN.COM/PRISMIC](http://WWW.PLBFUN.COM/PRISMIC)

- Attach the previous panel by lining up the pieces as shown and making the indicated connections, starting with the piece that sticks under the nose, and then making full connections all the way around the neck (going both ways). This piece goes all the way around the neck with lots of connections and ends up connecting to itself at the back of the neck.



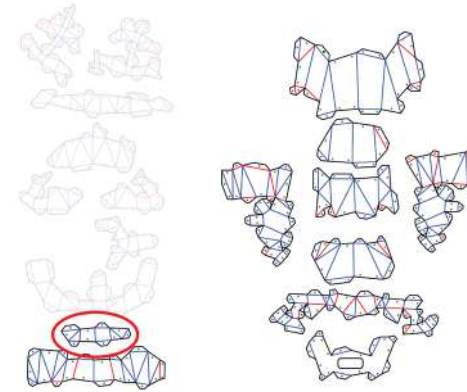
- You should end up with something that looks like this:



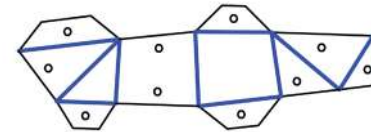
## Step 17

▶ [WWW.PLBFUN.COM/PRISMIC](http://WWW.PLBFUN.COM/PRISMIC)

- Pick up the highlighted panel.



- Bend the red and blue edges accordingly. This panel does not have connections within itself.



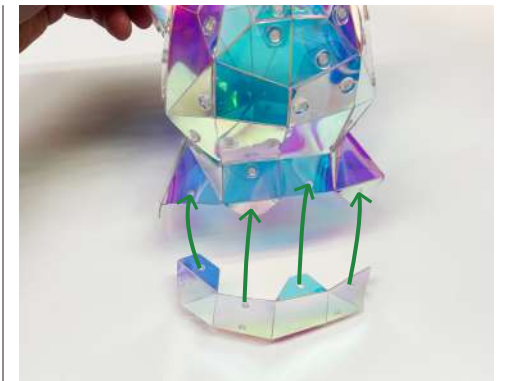
- You should end up with something that looks like this:



## Step 18

▶ [WWW.PLBFUN.COM/PRISMIC](http://WWW.PLBFUN.COM/PRISMIC)

- Attach the previous panel under the dog's neck, by lining up the pieces as shown and making the indicated connections.



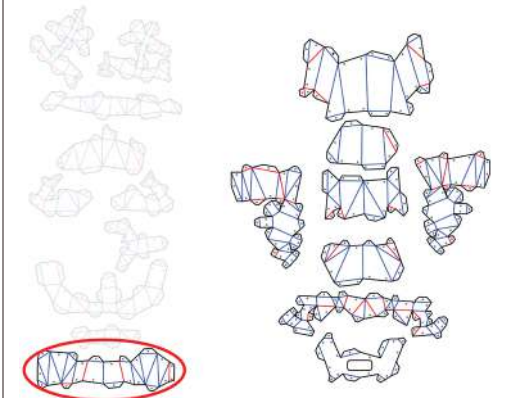
- You should end up with something that looks like this:



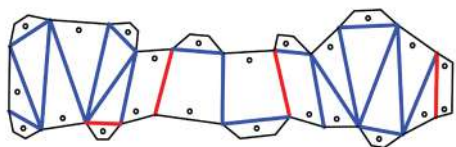
## Step 19

▶ [WWW.PLBFUN.COM/PRISMIC](http://WWW.PLBFUN.COM/PRISMIC)

- Pick up the highlighted panel.



- Bend the red and blue edges accordingly. This panel does not have connections within itself.



- You should end up with something that looks like this:



## Step 20

▶ [WWW.PLBFUN.COM/PRISMIC](http://WWW.PLBFUN.COM/PRISMIC)

- Attach the previous panel centered at the front of the dog by lining up the pieces as shown and making the indicated connections, then making connections to the left and right sides.



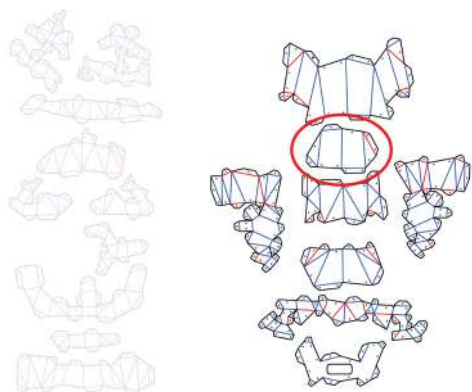
- You should end up with something that looks like this:



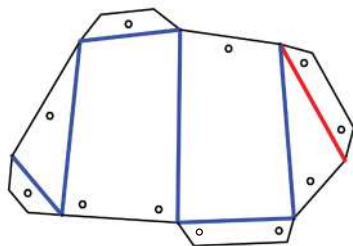
## Step 21

▶ [WWW.PLBFUN.COM/PRISMIC](http://WWW.PLBFUN.COM/PRISMIC)

- Pick up the highlighted panel.



- Bend the red and blue edges accordingly. This panel does not have connections within itself.



- You should end up with something that looks like this:



## Step 22

▶ [WWW.PLBFUN.COM/PRISMIC](http://WWW.PLBFUN.COM/PRISMIC)

- Connect the panel from the previous step to the main body, by lining up the pieces as shown and making the indicated connections.



- Once you have this piece folded and connected, you have completed the dog's chest.

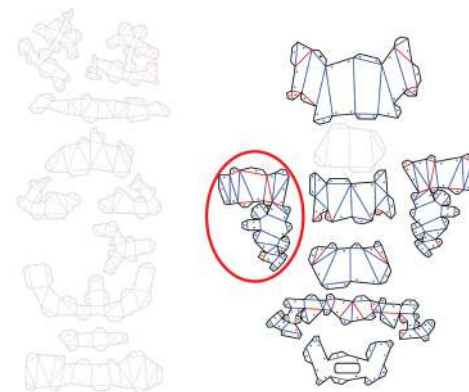
- You should end up with something that looks like this:  
(This piece will appear too far into the body of the dog. That's fine. It'll go into its rightful place at a later stage once the legs are attached)



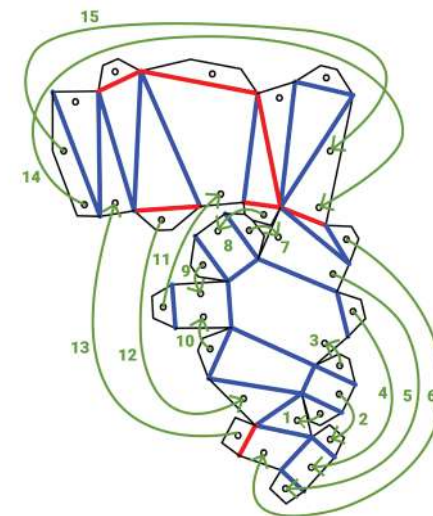
## Step 23

▶ [WWW.PLBFUN.COM/PRISMIC](http://WWW.PLBFUN.COM/PRISMIC)

- Pick up the highlighted panel.



- Bend the red and blue edges accordingly and make the connections in green.



- You should end up with something that looks like this:







- Once you have this piece folded and connected, you have completed the the front right leg.

### Step 24

▶ [WWW.PLBFUN.COM/PRISMIC](http://WWW.PLBFUN.COM/PRISMIC)

- Connect the leg from the previous step to the body by lining up the leg to the body as indicated below and making the connections at the top of the leg. (there is one small tab at the back of the leg that looks like it should connect, but it does not).



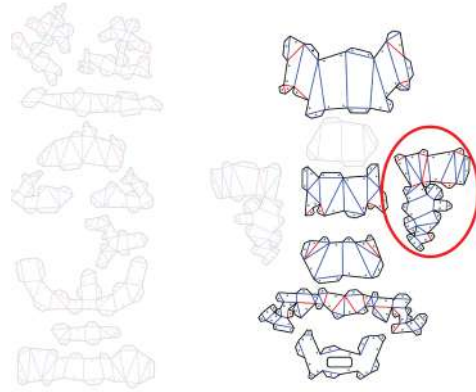
- You should end up with something that looks like this:



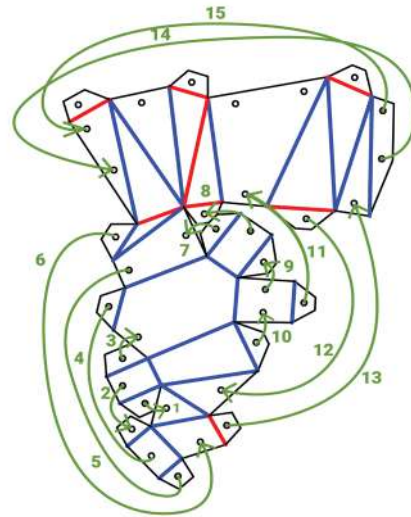
### Step 25

▶ [WWW.PLBFUN.COM/PRISMIC](http://WWW.PLBFUN.COM/PRISMIC)

- Pick up the highlighted panel.



- Bend the red and blue edges accordingly and make the connections in green.



- You should end up with something that looks like this:



### Step 26

▶ [WWW.PLBFUN.COM/PRISMIC](http://WWW.PLBFUN.COM/PRISMIC)

- Connect the left leg you completed in the previous step to the main body by lining up the panels and making the connections as shown below.



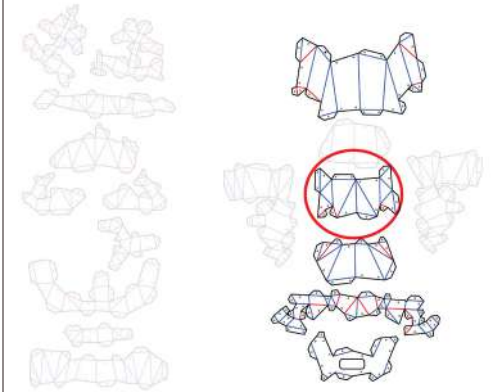
- Once you have this piece folded and connected, you have completed the dog's front legs.
- You should end up with something that looks like this:



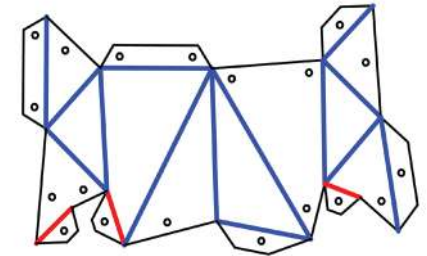
### Step 27

▶ [WWW.PLBFUN.COM/PRISMIC](http://WWW.PLBFUN.COM/PRISMIC)

- Pick up the highlighted panel.



- Bend the red and blue edges accordingly. This panel does not have connections within itself.



- You should have something that looks like this:



### Step 28

▶ [WWW.PLBFUN.COM/PRISMIC](http://WWW.PLBFUN.COM/PRISMIC)

- Connect the lower belly you completed in the previous step to the main body by lining up the panels and making the connections as show below.



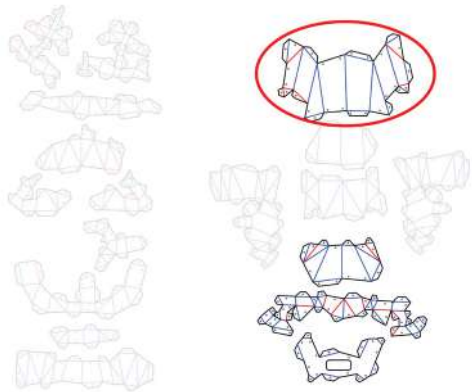
- You should end up with something that looks like this:



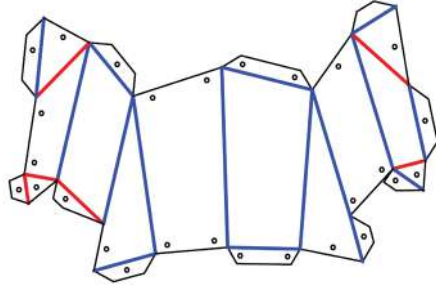
### Step 29

▶ [WWW.PLBFUN.COM/PRISMIC](http://WWW.PLBFUN.COM/PRISMIC)

- Pick up the highlighted panel.



- Bend the red and blue edges accordingly. This panel does not have connections within itself.



- You should end up with something that looks like this:



### Step 30

▶ [WWW.PLBFUN.COM/PRISMIC](http://WWW.PLBFUN.COM/PRISMIC)

- Connect the panel from the last step to the back of the dog by lining up the panels and making the connections as indicated below, and then continuing all the way around to connect the back and belly of the dog.



- Make these two connections first, then work your way to the right until the belly is connected.



- Once the right side is complete, it should look like this. Then do the same on the left side of the dog.



- Once you have this piece folded and connected, you have completed the dog's back.

- You should end up with something that looks like this:



### Step 31

▶ [WWW.PLBFUN.COM/PRISMIC](http://WWW.PLBFUN.COM/PRISMIC)

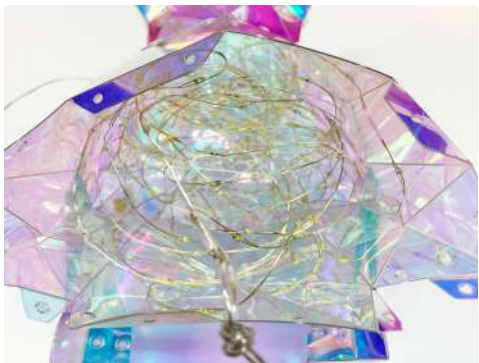
- With your PRISMIC™ Dog nearly complete, Flip the Dog over on its back so the opening is facing you. Unbundle the light strings and loosely spread them throughout the inside of the dog.



- Stuff some of the lights into the head of the dog. You can use the inside tabs to secure a couple of the strands near the top.



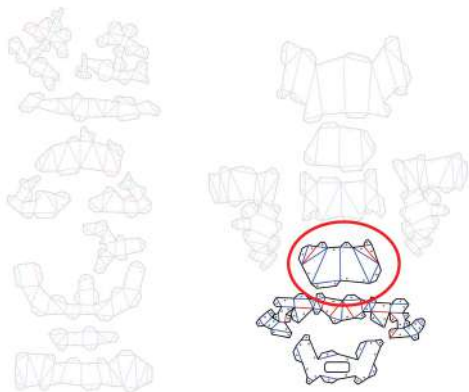
- Finish by stuffing the rest of the lights into the main body, making sure to get some into the front legs.
- Tie a simple knot on the thick part of the wire near the thin part and leave it coming out the back for now. You'll finish it once the remaining panels go on.



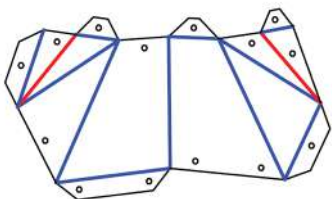
### Step 32

▶ [WWW.PLBFUN.COM/PRISMIC](http://WWW.PLBFUN.COM/PRISMIC)

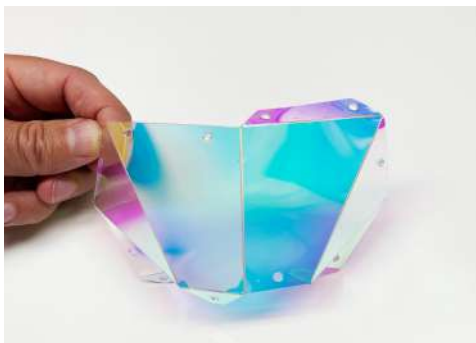
- Pick up the highlighted panel.



- Bend the red and blue edges accordingly. This panel does not have connections within itself.



- You should have something that looks like this:



### Step 33

▶ [WWW.PLBFUN.COM/PRISMIC](http://WWW.PLBFUN.COM/PRISMIC)

- Connect the lower back panel from the last step to the main body by lining up the pieces as shown and making the indicated connections.



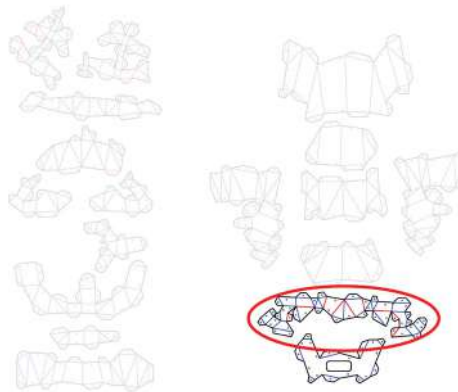
- You should end up with something that looks like this:



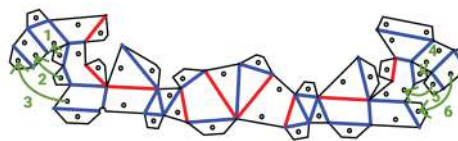
### Step 34

▶ [WWW.PLBFUN.COM/PRISMIC](http://WWW.PLBFUN.COM/PRISMIC)

- Pick up the highlighted panel.



- Bend the red and blue edges accordingly and make the connections as indicated.



- You should have something that looks like this (these are the back paws of the dog):



### Step 35

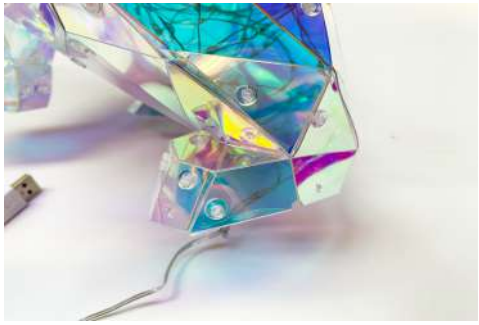
▶ [WWW.PLBFUN.COM/PRISMIC](http://WWW.PLBFUN.COM/PRISMIC)

- Connect the panel from Step 34 to the main assembly, by lining up the pieces as shown and making the indicated connections.



- Then make all the connections working towards one side first, then the other side. The last connections on top of the back paws can be a little tricky. Don't worry if you don't get them all.

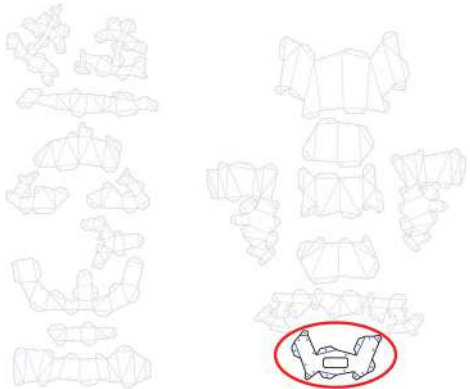




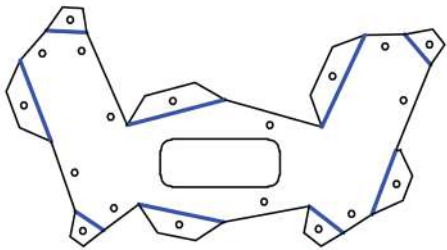
## Step 36

▶ [WWW.PLBFUN.COM/PRISMIC](http://WWW.PLBFUN.COM/PRISMIC)

- Pick up the highlighted panel.



- Bend the red and blue edges accordingly. This panel does not have connections within itself.
- This will be the last panel in your build. Make sure the bends are at 90 degrees for this panel.

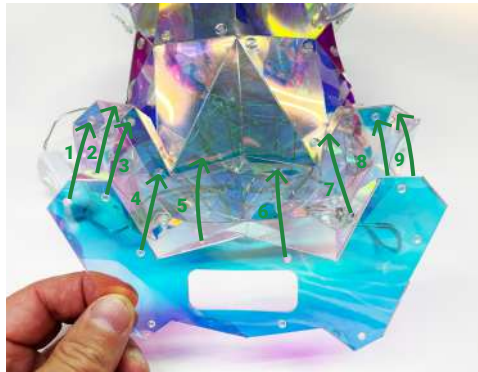


- You should have something that looks like this:

## Step 37

▶ [WWW.PLBFUN.COM/PRISMIC](http://WWW.PLBFUN.COM/PRISMIC)

- Connect the last panel to the main assembly. The easiest way to start the connection is to start from one of the toes and work your way around the backside toward the belly. Make sure to secure the main lead wire along the back edges with the knot on the inside of the body.



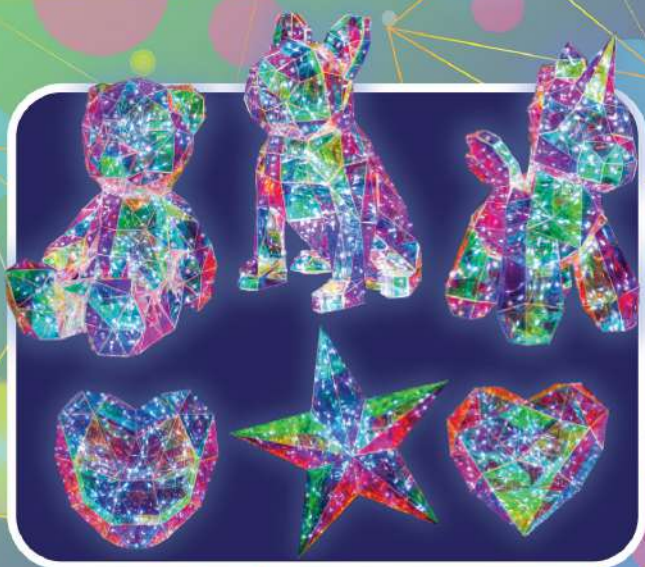
- Finish the connections around the panel's edge, leaving the two edges of the panel with the access hole for last. You can use the access hole to reach in and help make the final connections.
- You should end up with something that looks like this:



- Congratulations! You've completed this Prismic. Plug it into an existing USB outlet and enjoy!



[WWW.PLBFUN.COM/PRISMIC](http://WWW.PLBFUN.COM/PRISMIC)



Collect all our **PRISMIC™** 3D puzzle lanterns!  
Have you tried  **SUNCEMMERS®**  by **Purple Ladybug®**?

Become an insider at **PLBFUN.com/VIP** and find out **FIRST** about sales, new products, freebies and more!

Join our community online:  
follow us @PLBFUN



[WWW.PLBFUN.COM](http://WWW.PLBFUN.COM)