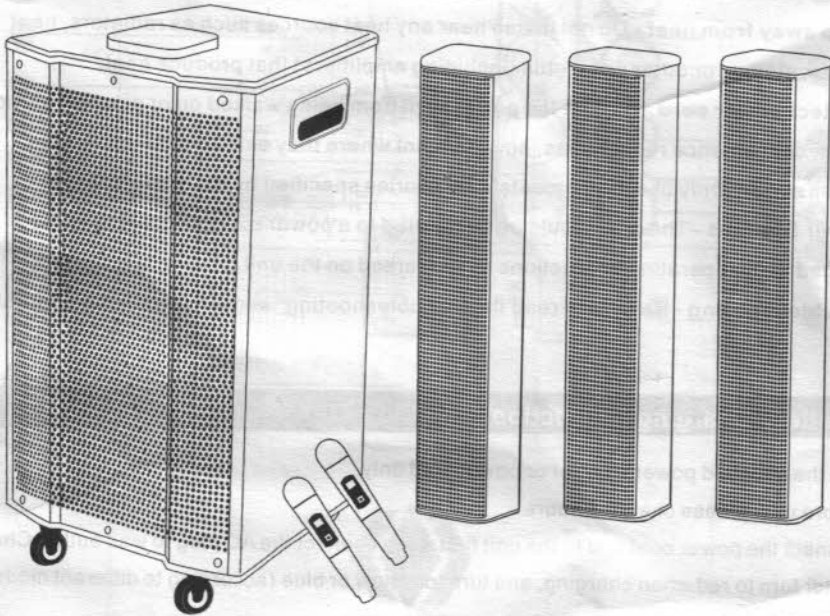




KOK AUDIO

INSTRUCTION MANUAL

Model No.: Blue-K15



TO CUSTOMER

Thank you for purchasing this active speaker from our company.
Please open the box carefully and check the accessories attached. Keep them well.
To ensure operating this item properly, please read the user manual before installation.

CAUTION!

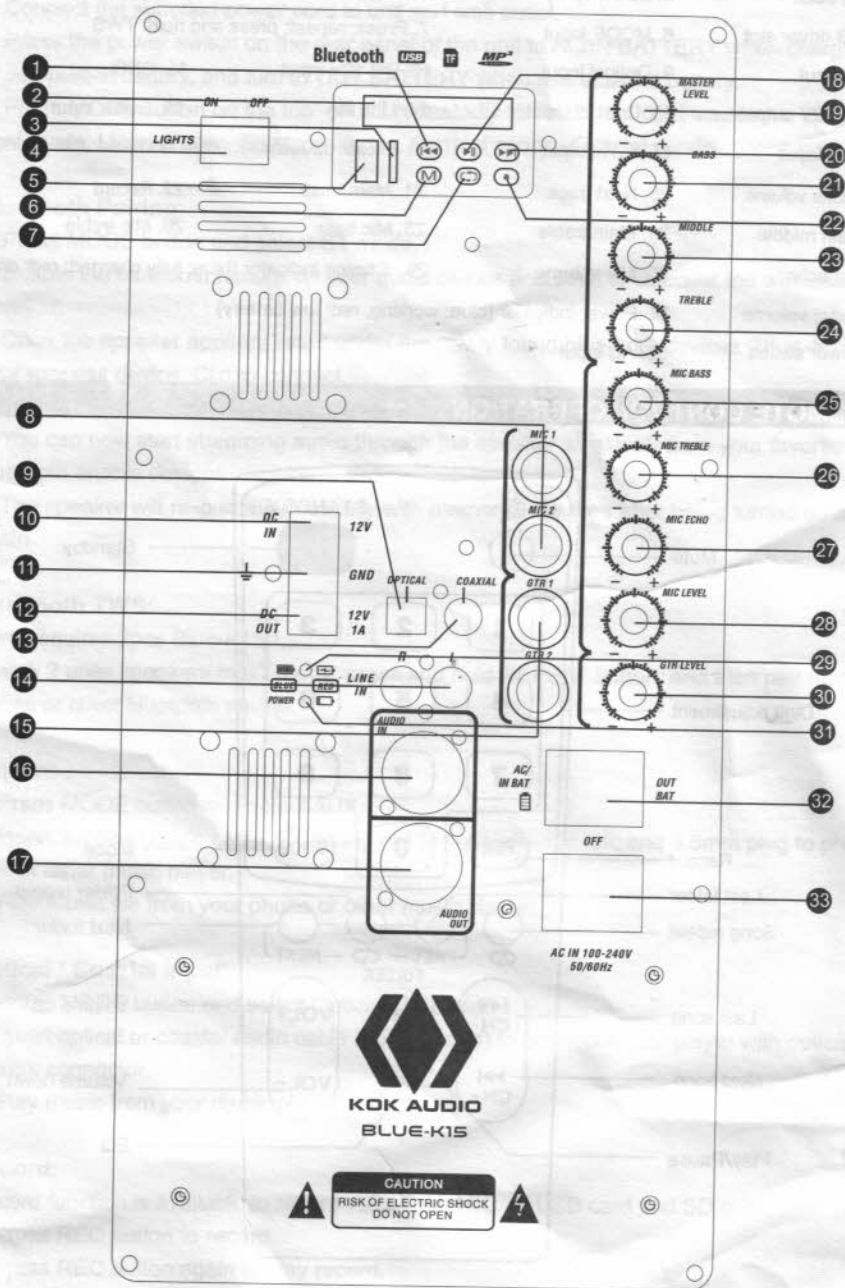
Before using the unit, be sure to read all operating instructions carefully. Please note that these are general precautions and may not pertain to your unit.

- 1. Read Instructions** - To ensure the finest performance, please read this manual carefully. Keep it for future reference. All operating and use instructions should be followed.
- 2. Do not use this unit near water** - Do not use this product near water and moisture, for example: near a bathtub, washbowl, kitchen sink or laundry tub; in a wet basement; or near a swimming pool.
- 3. Clear only with dry cloth** - Unplug this product from the wall outlet before cleaning. Do not use liquid cleaners or aerosol cleaners. Use a dry cloth for cleaning.
- 4. Keep away from heat** - Do not install near any heat sources such as radiators, heat registers, stoves, or other apparatus (including amplifiers) that produce heat.
- 5. Protect power cord** - Protect the power cord from being walked on or pinched particularly at plugs, convenience receptacles, and the point where they exit from the apparatus.
- 6. Accessories** - Only use attachments/accessories specified by the manufacturer.
- 7. Power Sources** - The unit should be connected to a power supply only of the type described in the operating instructions or as marked on the unit.
- 8. Troubleshooting** - Be sure to read the "Troubleshooting" section on common operating errors.

Battery Charging Instruction

1. Use the supplied power adapter or power cord only.
2. Before use, please charge 8 hours.
3. Connect the power cord end to the unit first, then connect the AC plug to wall outlet. Charging indicator turn to red when charging, and turn to yellow or blue (according to different model design) when fully charged.
4. During charging, the unit still can work. But please keep the volume down if the sound is broken.
5. Every time after use, please fully charge.
6. Long time no use, please make sure charge the unit once a month.

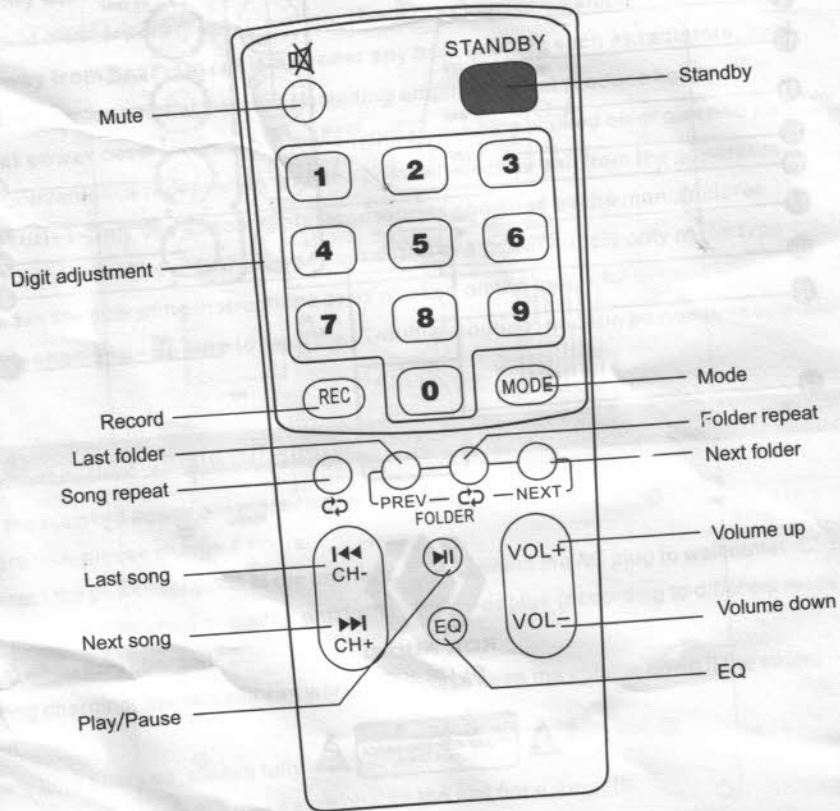
CONTROL PANEL OPERATION INSTRUCTION:



PANEL INSTRUCTION:

- | | | | |
|--------------------|---|---|------------------|
| 1. Last track | 2. LED display | 3. TF card slot | 4. Lights switch |
| 5. USB driver slot | 6. MODE input | 7. Press: repeat; press and hold: TWS | |
| 8. Mic input | 9. Optical input | 10. DC 12V input | 11. GND |
| 12. DC 12V output | 13. Coaxial input | 14. Line in | 15. Guitar input |
| 16. XLR input | 17. XLR output | 18. Press: pause/play; press and hold: mic priority | |
| 19. Master volume | 20. Next track | 21. Main bass | 22. Record |
| 23. Main middle | 24. Main treble | 25. Mic bass | 26. Mic treble |
| 27. Mic echo | 28. Mic volume | 29. Charge indicator (blue: fully charged; red: charging) | |
| 30. Guitar volume | 31. Power indicator (blue: working; red: low battery) | | |
| 32. Power switch | 33. AC input | | |

REMOTE CONTROL OPERATION:



OPERATIONS:

General Operation:

1. Connect the supplied power cord to unit and wall outlet.
2. Press the power switch on the rear panel of the unit to AC/IN BATTERY when charging or use built-in battery, and turn to OUT BATTERY when use external battery.
3. Press MODE button on the top of unit repeatedly to select the input source as: USB/SD card mode, Line in mode, Bluetooth mode, Optical mode, Coaxial mode.

Bluetooth Pairing:

1. Press MODE button and select BT mode.
2. Enable the bluetooth feature on your audio device and set it to discover the wireless speaker.
3. Once the speaker appears listed under the newly found bluetooth devices (Blue-K15) of your wireless device. Click to connect.
4. When pairing is successful, a tone will be heard through the speaker.
5. You can now start streaming audio through the speaker wirelessly from your favorite bluetooth enable devices.
6. The speaker will re-pair automatically with memorize devices after being turned off and on again.

Bluetooth TWS:

TWS requires 2pcs Blue-K15.

Switch 2 units speakers to BT mode, press and hold REPEAT button, and then pair from phone or other bluetooth device.

Line in:

1. Press MODE button and select AUX.
2. Insert supplied audio cable, RCA plug red to right, white to left; and 3.5mm plug to phone jack or other music player.
3. Play music file from your phone or other music player.

Optical / Coaxial input:

1. Press MODE button and select Optical or Coaxial.
2. Insert optical or coaxial audio cable (not included) to connect music player with optical or coaxial connector.
3. Play music from your music player.

Record:

Record function is available to record voice from MIC to USB card and SD card.

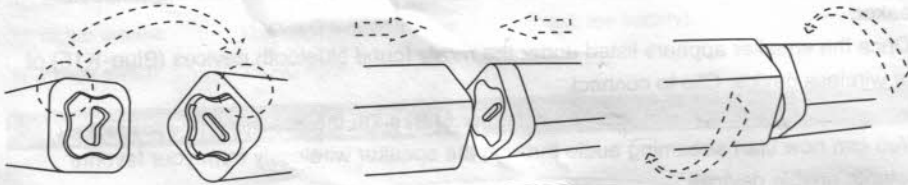
1. Press REC button to record.
2. Press REC button again to play record.

OPERATIONS:

3. Press and hold REC button for 2 seconds to delete record.
 4. On other mode, press RECORD button twice to play record file. Press again to return to USB/SD mode.
- Above operations are same on remote control and speaker control panel.

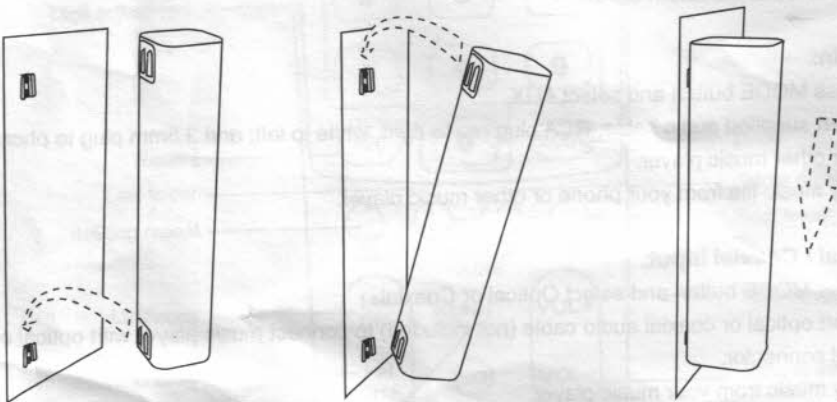
COLUMN SPEAKER INSTALLATION:

- ① Align insertion point
- ② Align and insert
- ③ Twist and fix



COLUMN SPEAKER SUSPENSION:

- ① Align to speaker bottom latch
- ② Base on bottom, adjust top latch
- ③ Glide and insert



TROUBLE SHOOTING

Please follow the instructions below if you meet the following problems. If the problem remains after you check it, please turn to our local distributor for help or contact our company.

Problem	Reason	Solution
Can't turn on speaker.	No battery.	Please charge.
No sound.	1. The volume is at minimum. 2. Wrong mode.	1. Turn up the volume. 2. Switch to the appropriate mode.
Broken sound at max volume.	Battery is low.	Please charge.
Can't connect Bluetooth.	1. The Bluetooth ID isn't correct. 2. Occupied by other cellphone or device. 3. Too many connected devices on cellphone.	1. Connect the correct Bluetooth ID. 2. Disconnect other device. 3. Clean paired devices.
Sound distortion.	The volume is too high.	Turn down the volume.

SPECIFICATIONS

Main channel output power (4ohm, 1KHz, 1% THD).....	5000W
Main channel frequency response.....	45Hz-20KHz +/-2dB
THD.....	≤ 0.2 %
S/N (main channel).....	≥ 72 dB
Battery parameter.....	Lead-acid 18Ah 12V
Driver size.....	15" + tweeterx9
Power supply.....	AC 100-240V 50/60Hz
Dimensions.....	442*425*2165mm (DxWxH)

PACKING LIST

Speaker.....	1PC
Operation manual.....	1PC
Aux cable.....	1PC
Remote control.....	1PC
Power cord.....	1PC
Wireless mic.....	2PCs

Please follow the instructions below if you meet the following conditions. If the problem remains after you check the hardware, please contact your local service center for assistance.

Check the power supply	Make sure the power supply is properly connected to the system and the power cord is plugged into a wall outlet.
Check the system unit	Make sure the system unit is properly connected to the power supply and the power cord is plugged into a wall outlet.
Check the monitor	Make sure the monitor is properly connected to the system and the power cord is plugged into a wall outlet.
Check the keyboard	Make sure the keyboard is properly connected to the system and the power cord is plugged into a wall outlet.
Check the mouse	Make sure the mouse is properly connected to the system and the power cord is plugged into a wall outlet.
Check the printer	Make sure the printer is properly connected to the system and the power cord is plugged into a wall outlet.
Check the scanner	Make sure the scanner is properly connected to the system and the power cord is plugged into a wall outlet.
Check the modem	Make sure the modem is properly connected to the system and the power cord is plugged into a wall outlet.
Check the network card	Make sure the network card is properly connected to the system and the power cord is plugged into a wall outlet.
Check the sound card	Make sure the sound card is properly connected to the system and the power cord is plugged into a wall outlet.

Microsoft Windows 95
 Microsoft Windows 95
 Microsoft Windows 95

System Unit	Model: 486SX
Monitor	Model: 14" SVGA
Keyboard	Model: 104 Key
Mouse	Model: 3-Button
Printer	Model: LaserJet
Scanner	Model: Flatbed
Modem	Model: 28.8Kbps
Network Card	Model: Ethernet
Sound Card	Model: 16-bit

Microsoft Windows 95
 Microsoft Windows 95
 Microsoft Windows 95