

WWW.GOLDFARBINC.COM

MAY 2024

CORE BUYING GUIDE

PUMPS | INJECTORS | TURBOS

Goldfarb & Associates Inc is a diesel parts brokerage company located in Rockville, Maryland. We specialize in diesel injection pumps, injectors and turbocharger cores.

This CORE BUYING GUIDE shows the parts we are currently buying together with our quality criteria. The guide is updated monthly so please check back for our latest update. If you have parts to sell that are not shown here, please send us your list and we will advise which parts we can accept.

WE PAY ALL SHIPPING COSTS FOR POs THAT ARE \$500 OR HIGHER.

Our company is built on the highest standards of quality and customer service. It is important that you review the quality criteria for each part described in this guide so you know what we will accept.

Be safe and take care. Saul Goldfarb

President

Goldfarb & Associates Inc

4972 Boiling Brook Parkway

Rockville, MD 20852

Tel: 301 770 4514

Cell: 240 401 0251

Saul@goldfarbinc.com

www.goldfarbinc.com

Check out our website!



CBG is good for month shown above. All parts are due in by the end of the month. Prices are NOT GUARANTEED to remain at current level.

Table of Contents

Product	Code	Page
FUEL INJECTION PUMPS		<u>5</u>
Ambac Model 100	186	<u>6</u>
Bosch P7100 Cummins Commercial	417	<u>6</u>
Bosch P7100 Dodge 5.9L	3	<u>6</u>
Bosch VE	2	<u>6</u>
Bosch VE Dodge 5.9L	151	<u>7</u>
Cat/Perkins 9.3L Motor	454	<u>7</u>
Caterpillar 3116	280	<u>7</u>
Caterpillar 3116/3126 Old Style HPOP (Round Top)	410	<u>7</u>
Caterpillar 3126 New Style HPOP (Flat Top)	161	<u>8</u>
Caterpillar 3208 Turbo	260	<u>8</u>
Caterpillar 3304 / 3306 New Scroll	215	<u>8</u>
Caterpillar 3304 4N145	433	<u>8</u>
Caterpillar 3406B Mechanical	192	<u>9</u>
Caterpillar C7/C9 HPOP	162	<u>9</u>
Caterpillar Perkins C6.4L & C6.6L	191	<u>9</u>
Cummins 4 Cylinder "P"	288	<u>9</u>
Cummins AFC R/H	217	<u>10</u>
Cummins CAPS 1	9	<u>10</u>
Cummins CAPS 2	94	<u>10</u>
Cummins ISX12 (without ribs)	429	<u>10</u>
Cummins ISX15	268	<u>11</u>
Cummins VP30	178	<u>11</u>
Cummins VP44	6	<u>11</u>
Denso Common Rail	283	<u>11</u>
Detroit Gear Pump	269	<u>12</u>
Ford 6.0L Aluminum HPOP	11	<u>12</u>
Ford 6.0L V8 Cast Iron HPOP	23	<u>12</u>
Ford 6.9L	455	<u>12</u>
Ford 7.3 Aluminum HPOP	12	<u>13</u>
Ford 7.3 Stanadyne DB2	250	<u>13</u>

Table of Contents

Product	Code	Page
GM 6.2 Stanadyne	245	<u>13</u>
GM 6.5 Stanadyne Mechanical	246	<u>13</u>
GM 6.5L DS	168	<u>14</u>
John Deere Bosch	266	<u>14</u>
John Deere Bosch Electronic	220	<u>14</u>
John Deere Stanadyne DE	16	<u>14</u>
Lucas / CAV / Delphi (Non DP200, 210 Styles)	254	<u>15</u>
Navistar Aluminum DT 466/DT530/I530 HPOP	124	<u>15</u>
Navistar Maxxforce 0-445-020-126	279	<u>15</u>
Navistar Maxxforce HPOP	169	<u>15</u>
Simms/Minimec 4 Cylinder	422	<u>16</u>
Stanadyne & Roosa Master - John Deere / Case / Caterpillar	419	<u>16</u>
Stanadyne - Caterpillar / Perkins / Case (Agricultural &	418	<u>16</u>
Stanadyne - John Deere (Agricultural & Industrial) DB2 &	15	<u>16</u>
New - Rebuilt Turbochargers & Pumps & Injectors	263	<u>17</u>
FUEL INJECTOR CORES		<u>18</u>
Caterpillar 3116 Mechanical	238	<u>19</u>
Caterpillar 3126 HEUI Side Mount	253	<u>19</u>
Caterpillar 3126 HEUI Top Mount	244	<u>19</u>
Caterpillar 3176/C10/C12 - Must have a Ceramic Solenoid	300	<u>19</u>
Caterpillar 3406E/C15	194	<u>20</u>
Caterpillar 3408 / 3412	305	<u>20</u>
Caterpillar 3500 (One Piece Body Only)	242	<u>20</u>
Caterpillar 7000 Series Pencil	185	<u>20</u>
Caterpillar C13	432	<u>21</u>
Caterpillar C7	31	<u>21</u>
Caterpillar C9	211	<u>21</u>
Caterpillar E3	225	<u>21</u>
Chevrolet Duramax 6.6L (LBZ) 2006-2007 #0-445-120-	306	<u>22</u>
Chevrolet Duramax 6.6L (LGH) 2011+ #0-445-117-008	307	<u>22</u>
Chevrolet Duramax 6.6L (LLY) 2004.5-2005 #0-445-120-	308	<u>22</u>

Table of Contents

Product	Code	Page
Chevrolet Duramax 6.6L (LMM) 2007-2010 #0-445-120-	310	<u>22</u>
Chevrolet Duramax L5P #12696966; 12678992	311	<u>23</u>
Cummins 24 Valve Mechanical	251	<u>23</u>
Cummins 5.9L 12 Valve	206	<u>23</u>
Cummins Celect M11 with Allen Bolt	227	<u>23</u>
Cummins Celect M11 with Flat Bolt	228	<u>24</u>
Cummins Celect N14 with Cup Spacer	229	<u>24</u>
Cummins HPI ISX	5	<u>24</u>
Cummins STC	47	<u>24</u>
Cummins Top Stop	213	<u>25</u>
Cummins XPI (Pegasus)	187	<u>25</u>
Cummins XPI ISX15	93	<u>25</u>
Delphi Paccar EUP	421	<u>25</u>
Detroit 92 Electronic	264	<u>26</u>
Detroit Diesel DD13/15	235	<u>26</u>
Detroit Diesel E3 (4 pin)	189	<u>26</u>
Detroit Diesel N3	28	<u>26</u>
Detroit N, C & 92 Series Mechanical	107	<u>27</u>
Detroit Series 60 (5000 and above)	30	<u>27</u>
Dodge Cummins 6.7L Common Rail 2007.5-2015	40	<u>27</u>
Ford 6.7L Powerstroke with grey arm 2015-2019	252	<u>27</u>
Ford 6.9/7.3 IDI Mechanical	193	<u>28</u>
Ford 7.3L Powerstroke AA	332	<u>28</u>
Ford 7.3L Powerstroke AB	333	<u>28</u>
Ford 7.3L Powerstroke AD	334	<u>28</u>
Ford 7.3L Powerstroke AE	335	<u>29</u>
GM 6.2 & 6.5 Mechanical	267	<u>29</u>
International DT466	278	<u>29</u>
John Deere Denso	285	<u>29</u>
John Deere Denso CR	256	<u>30</u>
L'Orange	240	<u>30</u>

Table of Contents

Product	Code	Page
Mack EUP	339	<u>30</u>
Mercedes MBE4000	423	<u>30</u>
Mercedes Sprinter 2001-2006 04451062 0986435129	344	<u>31</u>
Mercedes Sprinter Late 2007-2010	345	<u>31</u>
Navistar DT466 BA BB BC BD BE BF	336	<u>31</u>
Navistar DT466 BI BJ BN BP	337	<u>31</u>
Navistar G2.9 DT466/DT570/Maxxforce	43	<u>32</u>
Volvo 2 Pin	349	<u>32</u>
Volvo 4 Pin	243	<u>32</u>
Volvo with Ceramic Solenoid	348	<u>32</u>
VW 1.9L TDI	155	<u>33</u>
TURBOCHARGER CORES		<u>34</u>
2015+ Ford 6.7L F250 Powerstroke	257	<u>35</u>
Automotive	87	<u>35</u>
Caterpillar 3406E	51	<u>35</u>
Caterpillar ACERT C13/C15 High Pressure	173	<u>35</u>
Caterpillar ACERT C13/C15 Low Pressure	172	<u>36</u>
Caterpillar C7/C9	171	<u>36</u>
Chevrolet 6.5L GM8 Only	354	<u>36</u>
Chevrolet Duramax 6.6L (LB7) 2001-2004.5	67	<u>36</u>
Chevrolet Duramax 6.6L (LB7) 2001-2004.5 California	355	<u>37</u>
Chevrolet Duramax 6.6L (LBZ) 2006-2007	356	<u>37</u>
Chevrolet Duramax 6.6L (LLY) 2004.5-2005	358	<u>37</u>
Chevrolet Duramax 6.6L (LML/LGH) 2011+	357	<u>37</u>
Chevrolet Duramax 6.6L (LMM) 2008-2011	360	<u>38</u>
Chevrolet Duramax L5P	361	<u>38</u>
Cummins Dodge Ram HE300VG + HE351VE	117	<u>38</u>
Cummins Electronic VGT Turbocharger Actuator Core	363	<u>38</u>
Cummins Holset HE300VG / HE351VE Industrial	393	<u>39</u>
Cummins Holset HE341VE	395	<u>39</u>
Cummins Holset HT60	118	<u>39</u>

Table of Contents

Product	Code	Page
Cummins Holset HX55W	362	<u>39</u>
Cummins Holset HX60W	365	<u>40</u>
Cummins Holset HX80 / HX82 / HX83	277	<u>40</u>
Cummins Holset Wastegated HX30 / HX30W	366	<u>40</u>
Cummins Holset Wastegated HX35W, HX40W, WH1E, WH1C	77	<u>40</u>
Cummins ISX Holset HE431VE / HE451VE / HE400VG	95	<u>41</u>
Cummins ISX Holset HE500VG / HE551VE / HE561VE	98	<u>41</u>
Cummins M11 Holset HX55	364	<u>41</u>
Cummins ISX Holset HE551V	97	<u>41</u>
Daimler Detroit Diesel DD15	271	<u>42</u>
Detroit 14L	150	<u>42</u>
Detroit Series 60 12.7L Wastegated	59	<u>42</u>
Detroit Series 60 Non-Wastegated	56	<u>42</u>
Dodge 5.9L Cummins HE341CW	369	<u>43</u>
Dodge Cummins 5.9L Holset HE351CW 2004.5-2007	371	<u>43</u>
Ford 6.0L	204	<u>43</u>
Ford 6.4L Dual	64	<u>43</u>
Ford 6.4L Turbo Actuator	377	<u>44</u>
Ford 6.9/7.3 IDI	202	<u>44</u>
Ford 7.3L Powerstroke GTP38	63	<u>44</u>
Ford 7.3L Powerstroke GTP38 Mid Year 1998- 1999	378	<u>44</u>
Ford Powerstroke 6.7L Scorpion	388	<u>45</u>
Ford Powerstroke 6.7L Single Outlet	389	<u>45</u>
Holset Cummins ISX HX55	273	<u>45</u>
Holset Detroit Diesel DD15 HX55	274	<u>45</u>
Holset HE400/451 Volvo Mack	396	<u>46</u>
Holset HE531VE Detroit Diesel	272	<u>46</u>
Holset Non-Wastegated H2C / H2D / H2E	70	<u>46</u>
Holset Non-Wastegated H1C / H1E	69	<u>46</u>
Holset Non-Wastegated HT3B	68	<u>47</u>
Holset Paccar HE500VG / HE531VE	275	<u>47</u>

Table of Contents

Product	Code	Page
International 6.0L VT 365 Industrial/Commercial App	402	<u>47</u>
International DT466E Borg Warner B2V	404	<u>47</u>
International DT466E Borg Warner S300V	403	<u>48</u>
International MaxxForce Twin Turbos 9 / 10 / 11 / 13 / 15	406	<u>48</u>
Mack BWTS E7	282	<u>48</u>
Mack S430V	408	<u>48</u>
Marine	103	<u>49</u>
Mercedes Sprinter w/actuator	415	<u>49</u>
Nissan Titan Cummins Twin Turbo	430	<u>49</u>
New - Rebuilt Turbochargers & Pumps & Injectors	263	<u>49</u>
New - Rebuilt Turbochargers & Pumps & Injectors	263	<u>50</u>
Cummins EGR Valve	431	<u>51</u>
Cummins ISX Solenoid	123	<u>51</u>
Detroit Accessory Drive	424	<u>51</u>
Detroit EGR Valve	425	<u>51</u>
Detroit Series 60 Gear Pump	427	<u>52</u>
Detroit VPOD Cores	239	<u>52</u>
Ford 7.3 Throttle Shaft	232	<u>52</u>
Holset Actuator Control Valve	459	<u>52</u>
ECMs		<u>53</u>
Caterpillar 120 Pin	437	<u>54</u>
Caterpillar 40 Pin	438	<u>54</u>
Caterpillar 70 Pin	436	<u>54</u>
Cummins Celect & Celect Plus	458	<u>54</u>
Cummins ISX	439	<u>55</u>
Cummins ISX15	440	<u>55</u>
Detroit DDEC III and IV ECM	435	<u>55</u>
Detroit Diesel DDEC III	441	<u>55</u>
Detroit Diesel DDEC IV	442	<u>56</u>
Detroit Diesel DDEC V	443	<u>56</u>
Duramax LLY FICM	449	<u>56</u>

Table of Contents

Product	Code	Page
Ford 6.0L FICM	450	<u>56</u>
Ford 7.3L IDM	451	<u>57</u>
Freightliner CPC4 Module	457	<u>57</u>
International Maxxforce	445	<u>57</u>
International Maxxforce DT	444	<u>57</u>
Paccar MX13	456	<u>58</u>
V-Mac & II	447	<u>58</u>
V-Mac E7	446	<u>58</u>
Volvo Mack MP7, MP8, D12, D13	448	<u>58</u>

Table of Contents

Product	Code	Page
FUEL INJECTION PUMPS		<u>5</u>
Ambac Model 100	186	<u>6</u>
Bosch P7100 Cummins Commercial	417	<u>6</u>
Bosch P7100 Dodge 5.9L	3	<u>6</u>
Bosch VE	2	<u>6</u>
Bosch VE Dodge 5.9L	151	<u>7</u>
Cat/Perkins 9.3L Motor	454	<u>7</u>
Caterpillar 3116	280	<u>7</u>
Caterpillar 3116/3126 Old Style HPOP (Round Top)	410	<u>7</u>
Caterpillar 3126 New Style HPOP (Flat Top)	161	<u>8</u>
Caterpillar 3208 Turbo	260	<u>8</u>
Caterpillar 3304 / 3306 New Scroll	215	<u>8</u>
Caterpillar 3304 4N145	433	<u>8</u>
Caterpillar 3406B Mechanical	192	<u>9</u>
Caterpillar C7/C9 HPOP	162	<u>9</u>
Caterpillar Perkins C6.4L & C6.6L	191	<u>9</u>
Cummins 4 Cylinder "P"	288	<u>9</u>
Cummins AFC R/H	217	<u>10</u>
Cummins CAPS 1	9	<u>10</u>
Cummins CAPS 2	94	<u>10</u>
Cummins ISX12 (without ribs)	429	<u>10</u>
Cummins ISX15	268	<u>11</u>
Cummins VP30	178	<u>11</u>
Cummins VP44	6	<u>11</u>
Denso Common Rail	283	<u>11</u>
Detroit Gear Pump	269	<u>12</u>
Ford 6.0L Aluminum HPOP	11	<u>12</u>
Ford 6.0L V8 Cast Iron HPOP	23	<u>12</u>
Ford 6.9L	455	<u>12</u>
Ford 7.3 Aluminum HPOP	12	<u>13</u>
Ford 7.3 Stanadyne DB2	250	<u>13</u>

Table of Contents

Product	Code	Page
GM 6.2 Stanadyne	245	<u>13</u>
GM 6.5 Stanadyne Mechanical	246	<u>13</u>
GM 6.5L DS	168	<u>14</u>
John Deere Bosch	266	<u>14</u>
John Deere Bosch Electronic	220	<u>14</u>
John Deere Stanadyne DE	16	<u>14</u>
Lucas / CAV / Delphi (Non DP200, 210 Styles)	254	<u>15</u>
Navistar Aluminum DT 466/DT530/I530 HPOP	124	<u>15</u>
Navistar Maxxforce 0-445-020-126	279	<u>15</u>
Navistar Maxxforce HPOP	169	<u>15</u>
Simms/Minimec 4 Cylinder	422	<u>16</u>
Stanadyne & Roosa Master - John Deere / Case / Caterpillar	419	<u>16</u>
Stanadyne - Caterpillar / Perkins / Case (Agricultural &	418	<u>16</u>
Stanadyne - John Deere (Agricultural & Industrial) DB2 &	15	<u>16</u>
New - Rebuilt Turbochargers & Pumps & Injectors	263	<u>17</u>
FUEL INJECTOR CORES		<u>18</u>
Caterpillar 3116 Mechanical	238	<u>19</u>
Caterpillar 3126 HEUI Side Mount	253	<u>19</u>
Caterpillar 3126 HEUI Top Mount	244	<u>19</u>
Caterpillar 3176/C10/C12 - Must have a Ceramic Solenoid	300	<u>19</u>
Caterpillar 3406E/C15	194	<u>20</u>
Caterpillar 3408 / 3412	305	<u>20</u>
Caterpillar 3500 (One Piece Body Only)	242	<u>20</u>
Caterpillar 7000 Series Pencil	185	<u>20</u>
Caterpillar C13	432	<u>21</u>
Caterpillar C7	31	<u>21</u>
Caterpillar C9	211	<u>21</u>
Caterpillar E3	225	<u>21</u>
Chevrolet Duramax 6.6L (LBZ) 2006-2007 #0-445-120-	306	<u>22</u>
Chevrolet Duramax 6.6L (LGH) 2011+ #0-445-117-008	307	<u>22</u>
Chevrolet Duramax 6.6L (LLY) 2004.5-2005 #0-445-120-	308	<u>22</u>

Table of Contents

Product	Code	Page
Chevrolet Duramax 6.6L (LMM) 2007-2010 #0-445-120-	310	<u>22</u>
Chevrolet Duramax L5P #12696966; 12678992	311	<u>23</u>
Cummins 24 Valve Mechanical	251	<u>23</u>
Cummins 5.9L 12 Valve	206	<u>23</u>
Cummins Celect M11 with Allen Bolt	227	<u>23</u>
Cummins Celect M11 with Flat Bolt	228	<u>24</u>
Cummins Celect N14 with Cup Spacer	229	<u>24</u>
Cummins HPI ISX	5	<u>24</u>
Cummins STC	47	<u>24</u>
Cummins Top Stop	213	<u>25</u>
Cummins XPI (Pegasus)	187	<u>25</u>
Cummins XPI ISX15	93	<u>25</u>
Delphi Paccar EUP	421	<u>25</u>
Detroit 92 Electronic	264	<u>26</u>
Detroit Diesel DD13/15	235	<u>26</u>
Detroit Diesel E3 (4 pin)	189	<u>26</u>
Detroit Diesel N3	28	<u>26</u>
Detroit N, C & 92 Series Mechanical	107	<u>27</u>
Detroit Series 60 (5000 and above)	30	<u>27</u>
Dodge Cummins 6.7L Common Rail 2007.5-2015	40	<u>27</u>
Ford 6.7L Powerstroke with grey arm 2015-2019	252	<u>27</u>
Ford 6.9/7.3 IDI Mechanical	193	<u>28</u>
Ford 7.3L Powerstroke AA	332	<u>28</u>
Ford 7.3L Powerstroke AB	333	<u>28</u>
Ford 7.3L Powerstroke AD	334	<u>28</u>
Ford 7.3L Powerstroke AE	335	<u>29</u>
GM 6.2 & 6.5 Mechanical	267	<u>29</u>
International DT466	278	<u>29</u>
John Deere Denso	285	<u>29</u>
John Deere Denso CR	256	<u>30</u>
L'Orange	240	<u>30</u>

Table of Contents

Product	Code	Page
Mack EUP	339	<u>30</u>
Mercedes MBE4000	423	<u>30</u>
Mercedes Sprinter 2001-2006 04451062 0986435129	344	<u>31</u>
Mercedes Sprinter Late 2007-2010	345	<u>31</u>
Navistar DT466 BA BB BC BD BE BF	336	<u>31</u>
Navistar DT466 BI BJ BN BP	337	<u>31</u>
Navistar G2.9 DT466/DT570/Maxxforce	43	<u>32</u>
Volvo 2 Pin	349	<u>32</u>
Volvo 4 Pin	243	<u>32</u>
Volvo with Ceramic Solenoid	348	<u>32</u>
VW 1.9L TDI	155	<u>33</u>
TURBOCHARGER CORES		<u>34</u>
2015+ Ford 6.7L F250 Powerstroke	257	<u>35</u>
Automotive	87	<u>35</u>
Caterpillar 3406E	51	<u>35</u>
Caterpillar ACERT C13/C15 High Pressure	173	<u>35</u>
Caterpillar ACERT C13/C15 Low Pressure	172	<u>36</u>
Caterpillar C7/C9	171	<u>36</u>
Chevrolet 6.5L GM8 Only	354	<u>36</u>
Chevrolet Duramax 6.6L (LB7) 2001-2004.5	67	<u>36</u>
Chevrolet Duramax 6.6L (LB7) 2001-2004.5 California	355	<u>37</u>
Chevrolet Duramax 6.6L (LBZ) 2006-2007	356	<u>37</u>
Chevrolet Duramax 6.6L (LLY) 2004.5-2005	358	<u>37</u>
Chevrolet Duramax 6.6L (LML/LGH) 2011+	357	<u>37</u>
Chevrolet Duramax 6.6L (LMM) 2008-2011	360	<u>38</u>
Chevrolet Duramax L5P	361	<u>38</u>
Cummins Dodge Ram HE300VG + HE351VE	117	<u>38</u>
Cummins Electronic VGT Turbocharger Actuator Core	363	<u>38</u>
Cummins Holset HE300VG / HE351VE Industrial	393	<u>39</u>
Cummins Holset HE341VE	395	<u>39</u>
Cummins Holset HT60	118	<u>39</u>

Table of Contents

Product	Code	Page
Cummins Holset HX55W	362	<u>39</u>
Cummins Holset HX60W	365	<u>40</u>
Cummins Holset HX80 / HX82 / HX83	277	<u>40</u>
Cummins Holset Wastegated HX30 / HX30W	366	<u>40</u>
Cummins Holset Wastegated HX35W, HX40W, WH1E, WH1C	77	<u>40</u>
Cummins ISX Holset HE431VE / HE451VE / HE400VG	95	<u>41</u>
Cummins ISX Holset HE500VG / HE551VE / HE561VE	98	<u>41</u>
Cummins M11 Holset HX55	364	<u>41</u>
Cummins ISX Holset HE551V	97	<u>41</u>
Daimler Detroit Diesel DD15	271	<u>42</u>
Detroit 14L	150	<u>42</u>
Detroit Series 60 12.7L Wastegated	59	<u>42</u>
Detroit Series 60 Non-Wastegated	56	<u>42</u>
Dodge 5.9L Cummins HE341CW	369	<u>43</u>
Dodge Cummins 5.9L Holset HE351CW 2004.5-2007	371	<u>43</u>
Ford 6.0L	204	<u>43</u>
Ford 6.4L Dual	64	<u>43</u>
Ford 6.4L Turbo Actuator	377	<u>44</u>
Ford 6.9/7.3 IDI	202	<u>44</u>
Ford 7.3L Powerstroke GTP38	63	<u>44</u>
Ford 7.3L Powerstroke GTP38 Mid Year 1998- 1999	378	<u>44</u>
Ford Powerstroke 6.7L Scorpion	388	<u>45</u>
Ford Powerstroke 6.7L Single Outlet	389	<u>45</u>
Holset Cummins ISX HX55	273	<u>45</u>
Holset Detroit Diesel DD15 HX55	274	<u>45</u>
Holset HE400/451 Volvo Mack	396	<u>46</u>
Holset HE531VE Detroit Diesel	272	<u>46</u>
Holset Non-Wastegated H2C / H2D / H2E	70	<u>46</u>
Holset Non-Wastegated H1C / H1E	69	<u>46</u>
Holset Non-Wastegated HT3B	68	<u>47</u>
Holset Paccar HE500VG / HE531VE	275	<u>47</u>

Table of Contents

Product	Code	Page
International 6.0L VT 365 Industrial/Commercial App	402	<u>47</u>
International DT466E Borg Warner B2V	404	<u>47</u>
International DT466E Borg Warner S300V	403	<u>48</u>
International MaxxForce Twin Turbos 9 / 10 / 11 / 13 / 15	406	<u>48</u>
Mack BWTS E7	282	<u>48</u>
Mack S430V	408	<u>48</u>
Marine	103	<u>49</u>
Mercedes Sprinter w/actuator	415	<u>49</u>
Nissan Titan Cummins Twin Turbo	430	<u>49</u>
New - Rebuilt Turbochargers & Pumps & Injectors	263	<u>49</u>
New - Rebuilt Turbochargers & Pumps & Injectors	263	<u>50</u>
Cummins EGR Valve	431	<u>51</u>
Cummins ISX Solenoid	123	<u>51</u>
Detroit Accessory Drive	424	<u>51</u>
Detroit EGR Valve	425	<u>51</u>
Detroit Series 60 Gear Pump	427	<u>52</u>
Detroit VPOD Cores	239	<u>52</u>
Ford 7.3 Throttle Shaft	232	<u>52</u>
Holset Actuator Control Valve	459	<u>52</u>
ECMs		<u>53</u>
Caterpillar 120 Pin	437	<u>54</u>
Caterpillar 40 Pin	438	<u>54</u>
Caterpillar 70 Pin	436	<u>54</u>
Cummins Celect & Celect Plus	458	<u>54</u>
Cummins ISX	439	<u>55</u>
Cummins ISX15	440	<u>55</u>
Detroit DDEC III and IV ECM	435	<u>55</u>
Detroit Diesel DDEC III	441	<u>55</u>
Detroit Diesel DDEC IV	442	<u>56</u>
Detroit Diesel DDEC V	443	<u>56</u>
Duramax LLY FICM	449	<u>56</u>

Table of Contents

Product	Code	Page
Ford 6.0L FICM	450	<u>56</u>
Ford 7.3L IDM	451	<u>57</u>
Freightliner CPC4 Module	457	<u>57</u>
International Maxxforce	445	<u>57</u>
International Maxxforce DT	444	<u>57</u>
Paccar MX13	456	<u>58</u>
V-Mac & II	447	<u>58</u>
V-Mac E7	446	<u>58</u>
Volvo Mack MP7, MP8, D12, D13	448	<u>58</u>



Goldfarb & Associates Inc is a diesel parts brokerage company located in Rockville, Maryland. We specialize in diesel injection pumps, injectors and turbocharger cores.

This CORE BUYING GUIDE shows the parts we are currently buying together with our quality criteria. The guide is updated monthly so please check back for our latest update. If you have parts to sell that are not shown here, please send us your list and we will advise which parts we can accept.

WE PAY ALL SHIPPING COSTS FOR POs THAT ARE \$500 OR HIGHER.

Our company is built on the highest standards of quality and customer service. It is important that you review the quality criteria for each part described in this guide so you know what we will accept.

Be safe and take care.

Saul Goldfarb

President

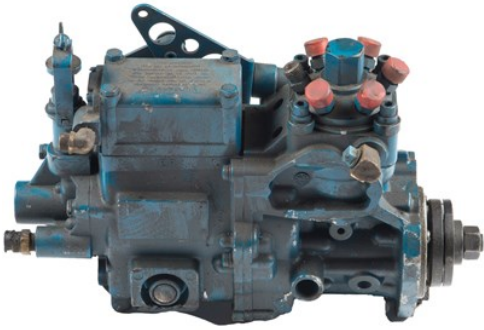
Goldfarb & Associates Inc

GOLDFARB & ASSOCIATES INC

QUALITY CRITERIA

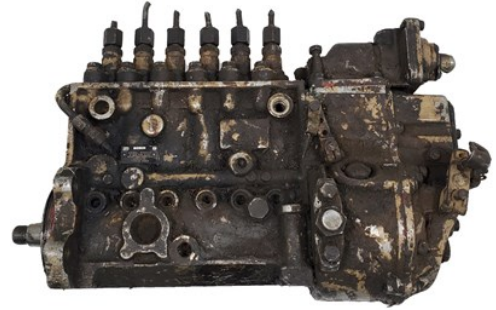
Fuel Injection Pumps

- No burned units.
- No units that have been dismantled or are missing parts.
- Units must be able to turn (when appropriate).
- Plastic electronic connectors must be in good condition.
- No excessive rust. Units that have been stored outdoors are likely to be scrap.



Ambac Model 100

\$75.00



**Bosch P7100 Cummins
Commercial**

\$100.00

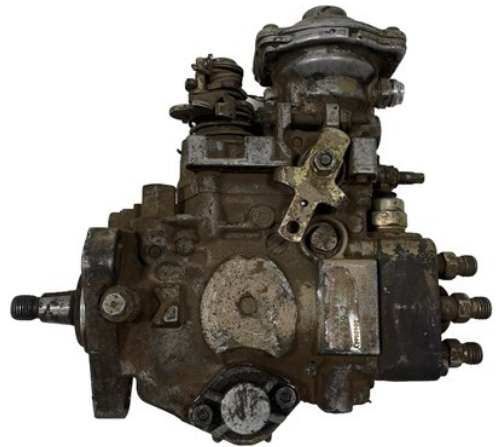
Part Numbers: 0-402-736-XXX; 0-402-746-
XXX



Bosch P7100 Dodge 5.9L

\$150.00

All Dodge Numbers: 0-402-736-
838/841/854/885/887/911/912/913



Bosch VE

\$75.00

Not Accepting Automotive Applications



Bosch VE Dodge 5.9L

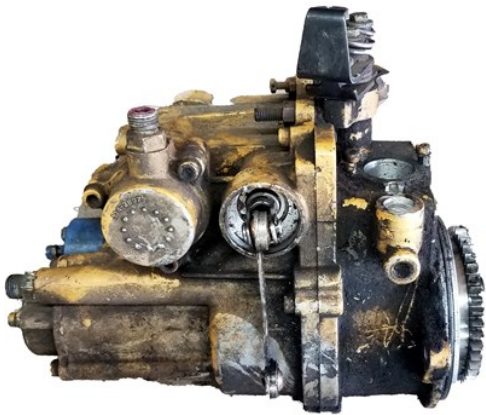
\$175.00

Dodge part numbers: 0-460-426-
103/114/184/205



Cat/Perkins 9.3L Motor

\$200.00



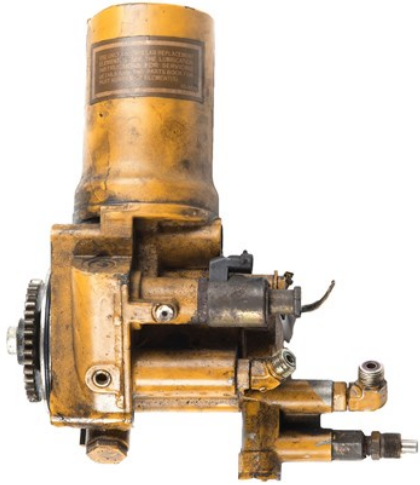
Caterpillar 3116

\$5.00



**Caterpillar 3116/3126 Old Style
HPOP (Round Top)**

\$90.00



**Caterpillar 3126 New Style HPOP
(Flat Top)**

\$110.00



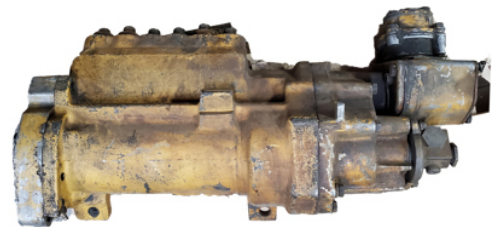
Caterpillar 3208 Turbo

\$60.00



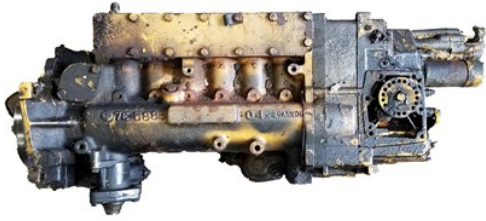
**Caterpillar 3304 / 3306 New
Scroll**

\$65.00



Caterpillar 3304 4N145

\$65.00



Caterpillar 3406B Mechanical

\$65.00



Caterpillar C7/C9 HPOP

\$200.00

\$75 if plug is damaged. Pump must turn.



**Caterpillar Perkins C6.4L &
C6.6L**

\$175.00

Must have good solenoids.

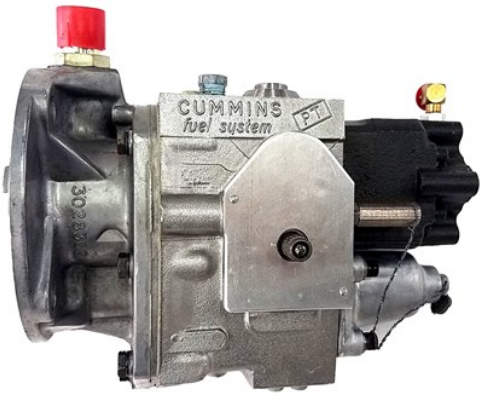


Cummins 4 Cylinder "P"

\$175.00

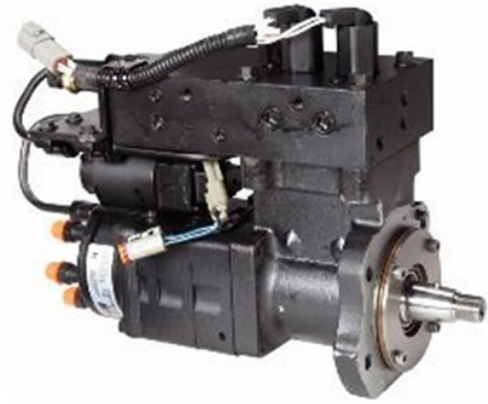
0-402-034-XXX

0-402-734-XXX



Cummins AFC R/H

\$45.00



Cummins CAPS 1

\$400.00



Cummins CAPS 2

\$175.00



Cummins ISX12 (without ribs)

\$90.00



Cummins ISX15

\$90.00

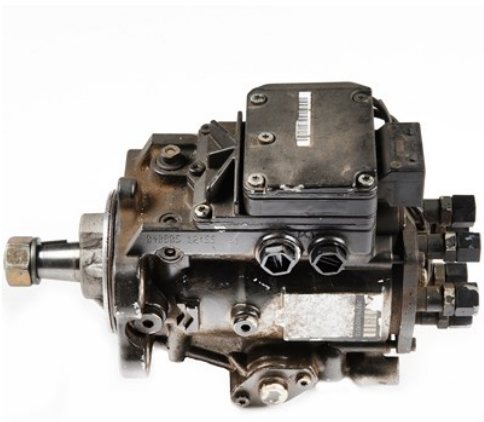
Part # 2872662 / 4307527 / 4307700



Cummins VP30

\$250.00

\$75.00 If plastic electronic plug is damaged.



Cummins VP44

\$250.00

\$125.00 If plastic electronic plug is damaged. Pump must turn.



Denso Common Rail

\$25.00



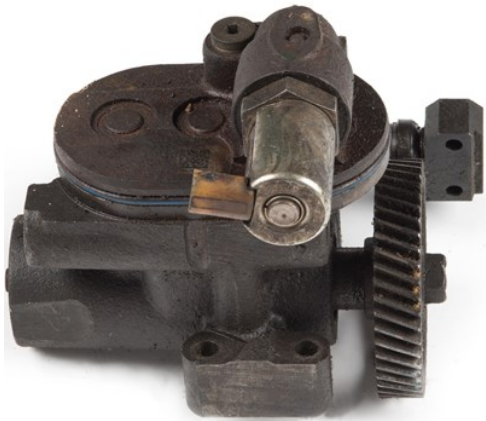
Detroit Gear Pump

\$10.00



Ford 6.0L Aluminum HPOP

\$135.00

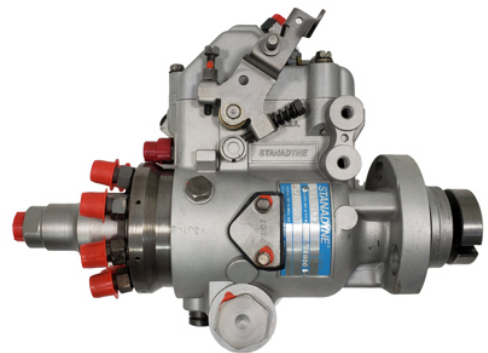


Ford 6.0L V8 Cast Iron HPOP

\$70.00

Ford 6.0L V8 Cast Iron 2004.5 - 2010

* Not Buying Navistar V6 Type



Ford 6.9L

\$40.00



Ford 7.3 Aluminum HPOP

\$115.00



Ford 7.3 Stanadyne DB2

\$40.00



GM 6.2 Stanadyne

\$40.00

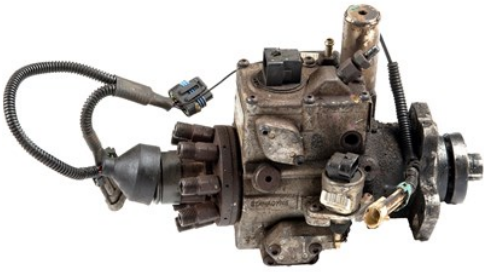
All Part #'s \$50.00 each



GM 6.5 Stanadyne Mechanical

\$40.00

Part #'s DB2831-4911; 4970; 5079; 5088;
5119; 5149; 5157; 5209; 5434; 5436; 5437;
5438; 5485; 5827; 5942

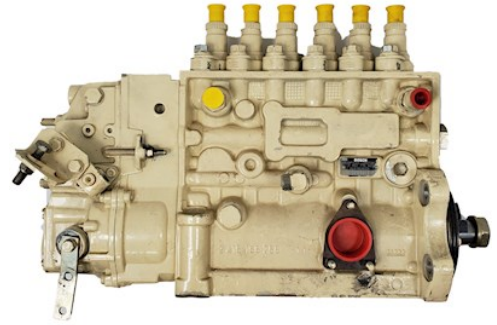


GM 6.5L DS

\$75.00

Part # 5067, 5068, 5288, 5459, 5521,
5942DS-5288, 5459, 5521, 5942, DS-
5067, 5068 & more...

No broken plastic components **Shaft
must turn**



John Deere Bosch

\$50.00



John Deere Bosch Electronic

\$150.00

Part # 0-402-196-XXX



John Deere Stanadyne DE

\$75.00



Lucas / CAV / Delphi (Non DP200, 210 Styles)

\$15.00

Must be complete & turn.



Navistar Aluminum DT 466/DT530/I530 HPOP

\$90.00



Navistar Maxxforce 0-445-020-126

\$150.00

0-445-020-126
Plugs must be good.



Navistar Maxxforce HPOP

\$25.00



Simms/Minimec 4 Cylinder

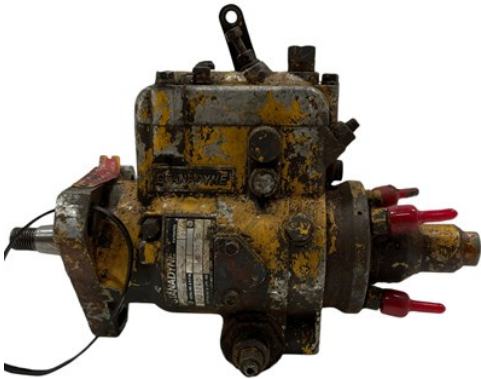
\$75.00

Pump must turn.



**Stanadyne & Roosa Master -
John Deere / Case / Caterpillar /
Perkins (Agricultural &
Industrial) DBG; DM; JDB; JDM**

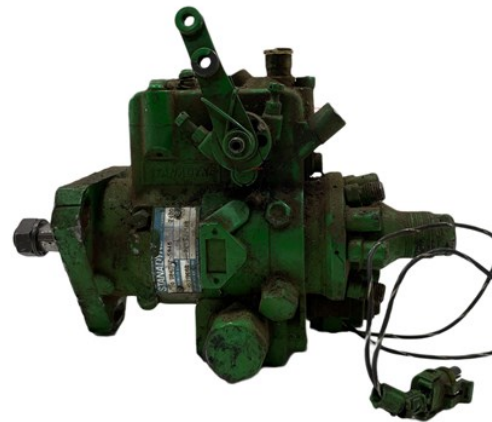
\$75.00



**Stanadyne - Caterpillar /
Perkins / Case (Agricultural &
Industrial) DB2 & DB4**

\$50.00

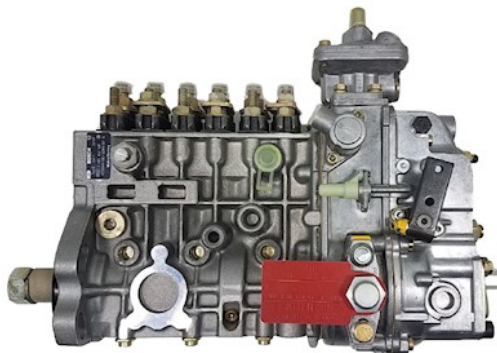
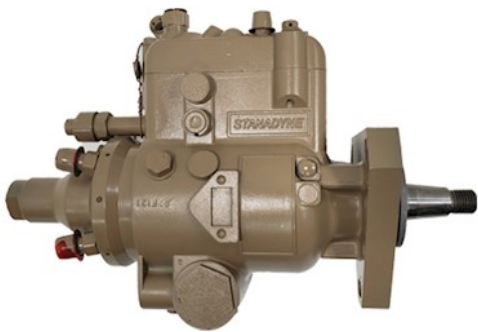
These do not include GM5.7, 6.2, and 6.5 and Ford 6.9/7.3.
All units must turn and be complete.



**Stanadyne - John Deere
(Agricultural & Industrial) DB2
& DB4**

These do not include GM5.7, 6.2, and 6.5 and Ford 6.9/7.3.
All units must turn and be complete.

NOT CURRENTLY BUYING



New - Rebuilt Turbochargers & Pumps & Injectors

Price: \$150.00 +

Must get list approved beforehand.

GOLDFARB & ASSOCIATES INC QUALITY CRITERIA

Fuel Injector Cores

- No burned units
- No units that have been dismantled or are missing parts
- No broken tips (except Detroit Series 60 Part 5000. & up)
- No cut wire harnesses
- Plastic electronic connectors must be in good condition
- No excessive rust.
- Units that have been stored outdoors are likely to be scrap
- No damaged or bent electrical studs (Bosch solenoids)
- Part #'s must be legible
- No plier marks on shafts

Examples of Damaged Fuel Injectors



Damaged Ford 6.0
Injector Plug



Damaged Dodge
CR Injector



Damaged CAT C7/C9
Injector



Caterpillar 3116 Mechanical

10.00



Caterpillar 3126 HEUI Side Mount

NOT CURRENTLY BUYING



Caterpillar 3126 HEUI Top Mount

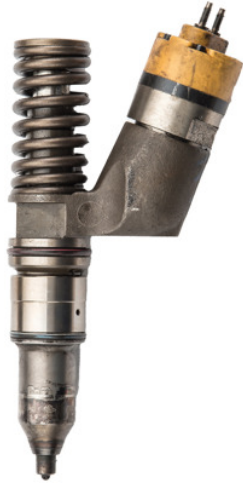
\$25.00

**Top Solenoid Style Only.
Must have good solenoid;
No burned or damaged units.**



Caterpillar 3176/C10/C12 - Must have a Ceramic Solenoid and legible Part #

\$10.00



Caterpillar 3406E/C15

\$110.00



Caterpillar 3408 / 3412

\$50.00



**ONE PIECE
BODY
ONLY**

**Caterpillar 3500 (One Piece Body
Only)**

\$75.00



Caterpillar 7000 Series Pencil

\$3.00

* One Piece Body Only, \$25.00 deduction
for damaged solenoid.



Caterpillar C13

\$25.00

Must have black band and plunger with hole on top.



Caterpillar C7

\$50.00

These part numbers only: 10R4761, 10R4762, 10R4763, 10R4764, 222-5961, 222-5962, 226-7681, 233-3534, 223-3535, 233-3536, 235-5518, 236-0953, 236-0973, 236-0974, 238-8091, 238-9808, continued...



Caterpillar C9

\$100.00

These part numbers only: 10R7222, 10R7224, 10R7225, 188-8739, 217-2570, 235-2888, 236-0962, 254-4339, 263-8218, 267-3360, 293-4072, 328-2574.



Caterpillar E3

\$100.00

4 Pins



Chevrolet Duramax 6.6L (LBZ)
2006-2007 #0-445-120-042

\$5.00



Chevrolet Duramax 6.6L (LGH)
2011+ #0-445-117-008

\$10.00



Chevrolet Duramax 6.6L (LLY)
2004.5-2005 #0-445-120-027

\$5.00



Chevrolet Duramax 6.6L (LMM)
2007-2010 #0-445-120-082

\$5.00



Chevrolet Duramax L5P
#12696966; 12678992

\$15.00



Cummins 24 Valve Mechanical

\$5.00



Cummins 5.9L 12 Valve

\$5.00

KDAL59-P5,6,7,9,12,16

Must have edge filter as shown in photo.



Cummins Celect M11 with Allen Bolt

\$40.00

No plier marks on body.



Cummins Celect M11 with Flat Bolt

\$40.00



Cummins Celect N14 with Cup Spacer

\$50.00

No plier marks on body.



Cummins HPI ISX

\$30.00

Must have LINK on top. No fake tips accepted. Pressure plugs on tip must be intact.



Cummins STC

\$25.00

Should have metal link. No plier marks on body.



Cummins Top Stop

\$5.00

Must have ridge



Cummins XPI (Pegasus)

\$40.00



Cummins XPI ISX15

\$65.00



Delphi Paccar EUP

\$20.00

Part Numbers: 1871117, 1934322, 2034927,
2102391



Detroit 92 Electronic

NOT CURRENTLY BUYING



Detroit Diesel DD13/15

\$35.00



Detroit Diesel E3 (4 pin)

\$75.00

Part # PE4E00001; RFE4E00001;
FE4E0001



Detroit Diesel N3

\$60.00

0-414-703-002; 0-414-703-003
0-414-703-005; 0-414-703-007
0-986-441-028; 0-986-441-029
0-986-441-030; 0-986-441-031
Not buying if damaged plug;
Must be able to read the Part #



**Detroit N, C & 92 Series
Mechanical**

\$15.00

NC92 has 2 notches on hex \$12.00.
HV & S Type have 1 notch or no notches on
hex = No Value!



**Detroit Series 60 (5000 and
above)**

\$90.00

Part #'s 5000 & UP only.



**Dodge Cummins 6.7L Common
Rail 2007.5-2015**

\$10.00

We are buying only these Part #'s: 0-445-
120-050 or 185 or 193 0-445-120-071 or
184 or 204 0-986-435-518 or 519



**Ford 6.7L Powerstroke with grey
arm 2015-2019**

\$10.00

Part # 0-445-117-040



Ford 6.9/7.3 IDI Mechanical

\$1.50



Ford 7.3L Powerstroke AA

\$10.00



Ford 7.3L Powerstroke AB

\$10.00



Ford 7.3L Powerstroke AD

\$15.00



Ford 7.3L Powerstroke AE

\$15.00



GM 6.2 & 6.5 Mechanical

\$1.50



International DT466

\$5.00



John Deere Denso

095000-6310; 095000-6320
RE546784; RE531209; RE530362
RE546783; RE531210; RE530361

NOT CURRENTLY BUYING



John Deere Denso CR

Must have good solenoid.
No Isuzu, Fuso or Hino.

NOT CURRENTLY BUYING



L'Orange

\$50.00

Part # 5940-750-0020

Part # 5240-750-0053



Mack EUP

\$5.00



Mercedes MBE4000

\$50.00

Part numbers: A4600170312; A0030179112



Mercedes Sprinter 2001-2006

04451062 0986435129

04451063 0986435109

0445110162 0445110181

\$5.00

Mercedes Sprinter Late 2007-

2010

\$5.00



Navistar DT466 BA BB BC BD BE

BF

\$40.00

Navistar DT466 BI BJ BN BP

\$40.00



**Navistar G2.9
DT466/DT570/Maxxforce**
\$25.00



Volvo 2 Pin
\$10.00



Volvo 4 Pin
\$20.00
All Part #'s



Volvo with Ceramic Solenoid
\$15.00



VW 1.9L TDI

038-130-073, 0-414-720-215, and 0-414-720-265. \$25.00 each

NOT CURRENTLY BUYING

GOLDFARB & ASSOCIATES INC

QUALITY CRITERIA

IMPORTANT!

Turbocharger Cores

- 1. No burned units**
- 2. No units that have been dismantled or are missing parts**
- 3. No excessive rust. Units that have been stored outdoors are likely to be scrap**
- 4. Plastic electronic connectors must be in good condition**
- 5. Damage to compressor or exhaust wheel (fan) will result in deductions or scrap unit.**
- 6. Side to side or in and out play of shaft will result in deductions or scrap unit.**
- 7. Damage to compressor or exhaust housings will result in deductions or scrap unit.**
- 8. Missing or damaged waste gate actuators will result in deductions or scrap**
- 9. Chinese aftermarket units have no value**

**Want to know how we check the quality of our turbocharger cores?
Take a look at this video:**

<http://youtu.be/YrvVuKUs5oE>



**2015+ Ford 6.7L F250
Powerstroke**

\$100.00

Part Numbers Starting FC + HC Only.



Automotive

NOT CURRENTLY BUYING



Caterpillar 3406E

\$65.00

No value for damaged units.



**Caterpillar ACERT C13/C15 High
Pressure**

\$65.00

No value for damaged housing



Caterpillar ACERT C13/C15 Low Pressure

\$50.00



Caterpillar C7/C9

NOT CURRENTLY BUYING



Chevrolet 6.5L GM8 Only

NOT CURRENTLY BUYING



Chevrolet Duramax 6.6L (LB7)

2001-2004.5

\$25.00

IHI Turbo.



**Chevrolet Duramax 6.6L (LB7)
2001-2004.5 California
Emissions**

\$75.00

Part # 8972541603



**Chevrolet Duramax 6.6L (LBZ)
2006-2007**

\$75.00



**Chevrolet Duramax 6.6L (LLY)
2004.5-2005**

\$75.00



**Chevrolet Duramax 6.6L
(LML/LGH) 2011+**

\$75.00



**Chevrolet Duramax 6.6L (LMM)
2008-2011**
\$75.00

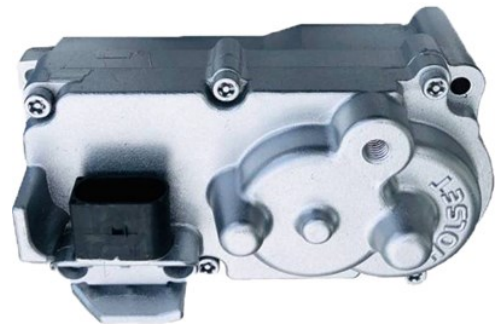


Chevrolet Duramax L5P
\$200.00



**Cummins Dodge Ram HE300VG
+ HE351VE**
\$300.00

Good units \$300.00. Damaged units
\$125.00



**Cummins Electronic VGT
Turbocharger Actuator Core**
\$100.00

HE300VG + HE351VE Actuator.
No value for damaged.



**Cummins Holset HE300VG /
HE351VE Industrial**

\$300.00



Cummins Holset HE341VE

\$200.00



Cummins Holset HT60

\$65.00

Good units only!



Cummins Holset HX55W

\$90.00



Cummins Holset HX60W

\$100.00



**Cummins Holset HX80 / HX82 /
HX83**

\$75.00



**Cummins Holset Wastegated
HX30 / HX30W**

\$65.00



**Cummins Holset Wastegated
HX35W, HX40W, WH1E, WH1C**

\$65.00



**Cummins ISX Holset HE431VE /
HE451VE / HE400VG**

\$300.00

\$300.00 each if good. \$125.00 each if
damaged. Must have the electronic
actuator.



**Cummins ISX Holset HE500VG /
HE551VE / HE561VE**

\$300.00

\$300.00 each if good. \$100.00 each if
damaged. Must have the electronic
actuator.



Cummins ISX Holset HE551V

\$150.00

\$150 each if good. \$50.00 each if damaged.
Must have a mechanical actuator.



Cummins M11 Holset HX55

NOT CURRENTLY BUYING



Daimler Detroit Diesel DD15

\$300.00

Part # A4720901480



Detroit 14L

\$50.00

\$25.00 If damaged or missing actuator.



**Detroit Series 60 12.7L
Wastegated**

\$65.00

No value on damaged units. Garrett only.



**Detroit Series 60 Non-
Wastegated**

\$50.00

No value on damaged units. Garrett only.



Dodge 5.9L Cummins HE341CW
\$65.00



Dodge Cummins 5.9L Holset
HE351CW 2004.5-2007
\$65.00



Ford 6.0L

NOT CURRENTLY BUYING



Ford 6.4L Dual

\$150.00

\$150.00 Good. Buying complete sets only.



Ford 6.4L Turbo Actuator

\$25.00



Ford 6.9/7.3 IDI

\$35.00

Part #'s 466533-1, 2, 3, 4, 5, 6,
1819744C92, 1821328C91, 1821329C91.



Ford 7.3L Powerstroke GTP38

Large compressor housing only. Exhaust side 7 Bolt pattern only - shown on image. Years 1995.5 and higher only. No value on damaged units. With proper vertical Actuator Nipple - not horizontal.

NOT CURRENTLY BUYING



Ford 7.3L Powerstroke GTP38 Mid Year 1998- 1999

Part Numbers 1825878C91 / C92

NOT CURRENTLY BUYING



Ford Powerstroke 6.7L Scorpion

NOT CURRENTLY BUYING



Ford Powerstroke 6.7L Single Outlet

NOT CURRENTLY BUYING



Holset Cummins ISX HX55

\$90.00

Part # 3595090, 4036892,
4089754...others



Holset Detroit Diesel DD15 HX55

\$65.00

Part # 3768075...plus others



Holset HE400/451 Volvo Mack

\$250.00



Holset HE531VE Detroit Diesel

\$300.00

Part # 2836825, 4043261, 4045291,
23539570, 23539062...



**Holset Non-Wastegated H1C /
H1E**

No value for damaged units.
NOT CURRENTLY BUYING



**Holset Non-Wastegated H2C /
H2D / H2E**

No value for damaged units.
NOT CURRENTLY BUYING



Holset Non-Wastegated HT3B

No value for damaged units.

NOT CURRENTLY BUYING



**Holset Paccar HE500VG /
HE531VE**

\$350.00

Part # 2842125, 3767294, 1831156.



**International 6.0L VT 365
Industrial/Commercial App**

Six Blade Compressor Wheel

NOT CURRENTLY BUYING



**International DT466E Borg
Warner B2V**

\$125.00

NOTE: V-Band Turbine Housing



**International DT466E Borg
Warner S300V**

\$125.00

NOTE: Bolted Turbine Housing.



**International MaxxFace Twin
Turbos 9 / 10 / 11 / 13 / 15**

\$150.00

\$150.00 for the set.
\$75.00 / side



Mack BWTS E7

(Upturn Compressor Cover Only)

NOT CURRENTLY BUYING



Mack S430V

\$175.00

NOTE: Must Have Good Electronics.



Marine

\$100-\$150 Good units.
\$50 Damaged units.



Mercedes Sprinter w/actuator

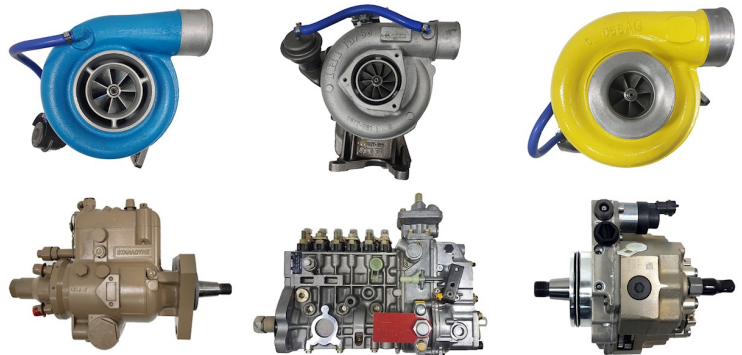
NOTE: Must Have Good Electronic Actuator.

NOT CURRENTLY BUYING



Nissan Titan Cummins Twin Turbo

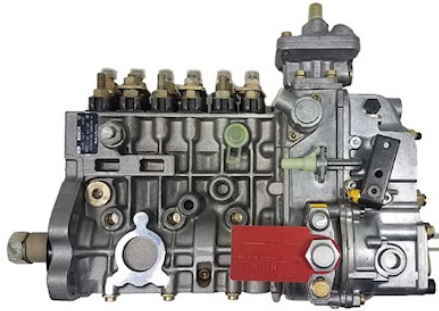
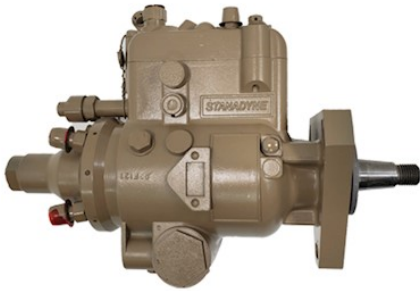
\$150.00



New - Rebuilt Turbochargers & Pumps & Injectors

\$150.00 +

Must get list approved beforehand.



New - Rebuilt Turbochargers & Pumps & Injectors

\$150.00 +

Must get list approved beforehand.



Cummins EGR Valve

\$25.00



Cummins ISX Solenoid

\$20.00



Detroit Accessory Drive

NOT CURRENTLY BUYING



Detroit EGR Valve

\$25.00



Detroit Series 60 Gear Pump

\$10.00



Detroit VPOD Cores

\$60.00

No value for broken plug.

Program: DDE6 Group: S50/60 VPOD
C23530299 R23530299/CR
C23530736 R23530736/CR
C23536813 E - R 23536813/CR
C23536814 E - R 23536814/CR



Ford 7.3 Throttle Shaft

\$20.00

Part # 23588



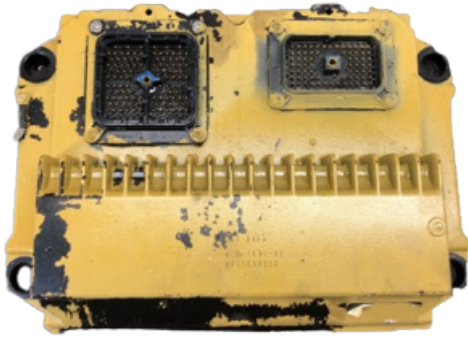
Holset Actuator Control Valve

\$40.00

GOLDFARB & ASSOCIATES INC
QUALITY CRITERIA
IMPORTANT!

ECM Cores

1. **No burned units**
2. **No units that have been dismantled or are missing parts**
3. **No excessive rust. Units that have been stored outdoors are likely to be scrap**
4. **Plastic electronic connectors must be in good condition**
5. **Chinese aftermarket units have no value**



Caterpillar 120 Pin

\$100.00

Cat #s MXS, SDP, LEE, NXS



Caterpillar 40 Pin

\$75.00

Cat #s 1LW, 5EK, 6TS



Caterpillar 70 Pin

\$100.00

Cat #s 157-3705, 162-7584, 259-1159,
240-5303, 206-2700, 179-4899



Cummins Celect & Celect Plus

\$125.00



Cummins ISX

\$100.00

Cummins # 3684009 (CM870), 3684275 (CM871)



Cummins ISX15

\$100.00

Cummins # 4358814



Detroit DDEC III and IV ECM

\$100.00

No water or fire damage.
Plugs can not be damaged.
No disassembled units.



Detroit Diesel DDEC III

\$100.00

Detroit #s 23513553, 23518645, 23518743



Detroit Diesel DDEC IV

\$175.00

Detroit #s 23519307, 23519308



Detroit Diesel DDEC V

\$175.00

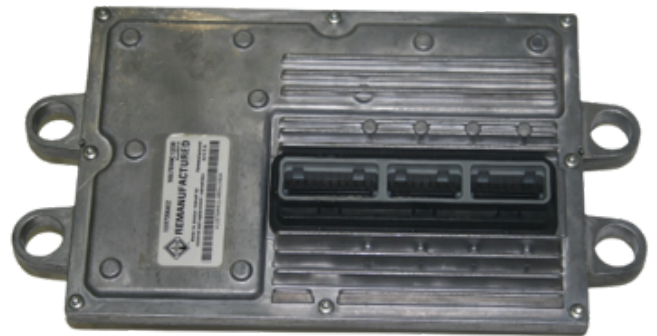
Detroit #s 23530802, 23535798, 23535990



Duramax LLY FICM

\$75.00

Part Numbers # 0-281-011-134 , 97303751



Ford 6.0L FICM

\$50.00

Navistar # 1845117C1/2/3/4/ , 4307224R1, 4307211R93



Ford 7.3L IDM

\$90.00

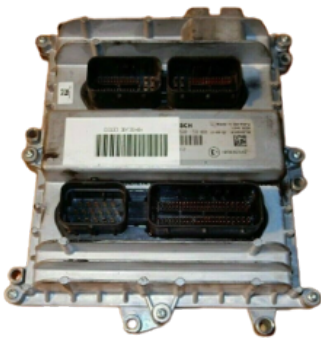
Part Numbers # IDM100, IDM110, IDM120



Freightliner CPC4 Module

\$200.00

A 003 446 10 02 / 005



International Maxxforce

\$100.00

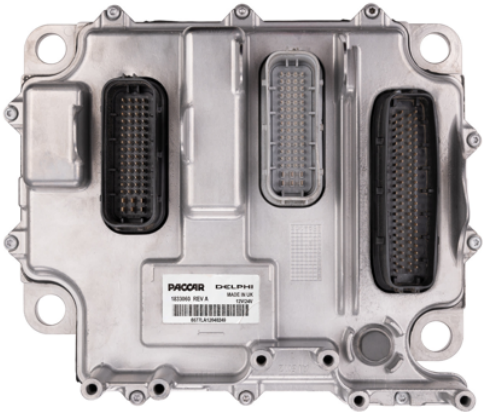
Part Numbers # 3007009C2, 5010979R1,
5010980R1, 0-281-020-159



International Maxxforce DT

\$100.00

International # 1881708C91, 1883086C93



Paccar MX13

\$175.00



V-Mac & II

\$100.00

Part #s 0-281-001-095, 12MS51M,
12MS59M

* Note: If the ECM is not the numbers
listed, price reduced to \$50.00



V-Mac E7

\$100.00

Part #s 0-281-001-095, 12MS45M2
* Note: If the ECM is not the numbers
listed, price reduced to \$50.00



Volvo Mack MP7, MP8, D12, D13

\$100.00

Part #s 20412511, 20561256, 20583789,
20814620, 20814642, 20977021,
21042371, 21107008, 21300060, 21358126,
21900553, 22581042

Table of Contents

Product	Page
FUEL INJECTION PUMPS	5
Ambac Model 100	<u>6</u>
Bosch P7100 Cummins Commercial	<u>6</u>
Bosch P7100 Dodge 5.9L	<u>6</u>
Bosch VE	<u>6</u>
Bosch VE Dodge 5.9L	7
Cat/Perkins 9.3L Motor	7
Caterpillar 3116	7
Caterpillar 3116/3126 Old Style HPOP (Round Top)	7
Caterpillar 3126 New Style HPOP (Flat Top)	<u>8</u>
Caterpillar 3208 Turbo	<u>8</u>
Caterpillar 3304 / 3306 New Scroll	<u>8</u>
Caterpillar 3304 4N145	<u>8</u>
Caterpillar 3406B Mechanical	9
Caterpillar C7/C9 HPOP	9
Caterpillar Perkins C6.4L & C6.6L	9
Cummins 4 Cylinder "P"	9
Cummins AFC R/H	<u>10</u>
Cummins CAPS 1	<u>10</u>
Cummins CAPS 2	<u>10</u>
Cummins ISX12 (without ribs)	<u>10</u>
Cummins ISX15	<u>11</u>
Cummins VP30	<u>11</u>
Cummins VP44	<u>11</u>
Denso Common Rail	<u>11</u>
Detroit Gear Pump	<u>12</u>
Ford 6.0L Aluminum HPOP	<u>12</u>
Ford 6.0L V8 Cast Iron HPOP	<u>12</u>
Ford 6.9L	<u>12</u>
Ford 7.3 Aluminum HPOP	<u>13</u>
Ford 7.3 Stanadyne DB2	<u>13</u>

Table of Contents

Product	Page
GM 6.2 Stanadyne	<u>13</u>
GM 6.5 Stanadyne Mechanical	<u>13</u>
GM 6.5L DS	<u>14</u>
John Deere Bosch	<u>14</u>
John Deere Bosch Electronic	<u>14</u>
John Deere Stanadyne DE	<u>14</u>
Lucas / CAV / Delphi (Non DP200, 210 Styles)	<u>15</u>
Navistar Aluminum DT 466/DT530/I530 HPOP	<u>15</u>
Navistar Maxxforce 0-445-020-126	<u>15</u>
Navistar Maxxforce HPOP	<u>15</u>
Simms/Minimec 4 Cylinder	<u>16</u>
Stanadyne & Roosa Master - John Deere / Case / Caterpillar / Perkins	<u>16</u>
Stanadyne - Caterpillar / Perkins / Case (Agricultural & Industrial) DB2 & DB4	<u>16</u>
Stanadyne - John Deere (Agricultural & Industrial) DB2 & DB4	<u>16</u>
New - Rebuilt Turbochargers & Pumps & Injectors	<u>17</u>
FUEL INJECTOR CORES	<u>18</u>
Caterpillar 3116 Mechanical	<u>19</u>
Caterpillar 3126 HEUI Side Mount	<u>19</u>
Caterpillar 3126 HEUI Top Mount	<u>19</u>
Caterpillar 3176/C10/C12 - Must have a Ceramic Solenoid and legible Part #	<u>19</u>
Caterpillar 3406E/C15	<u>20</u>
Caterpillar 3408 / 3412	<u>20</u>
Caterpillar 3500 (One Piece Body Only)	<u>20</u>
Caterpillar 7000 Series Pencil	<u>20</u>
Caterpillar C13	<u>21</u>
Caterpillar C7	<u>21</u>
Caterpillar C9	<u>21</u>
Caterpillar E3	<u>21</u>
Chevrolet Duramax 6.6L (LBZ) 2006-2007 #0-445-120-042	<u>22</u>
Chevrolet Duramax 6.6L (LGH) 2011+ #0-445-117-008	<u>22</u>
Chevrolet Duramax 6.6L (LLY) 2004.5-2005 #0-445-120-027	<u>22</u>

Table of Contents

Product	Page
Chevrolet Duramax 6.6L (LMM) 2007-2010 #0-445-120-082	<u>22</u>
Chevrolet Duramax L5P #12696966; 12678992	<u>23</u>
Cummins 24 Valve Mechanical	<u>23</u>
Cummins 5.9L 12 Valve	<u>23</u>
Cummins Celect M11 with Allen Bolt	<u>23</u>
Cummins Celect M11 with Flat Bolt	<u>24</u>
Cummins Celect N14 with Cup Spacer	<u>24</u>
Cummins HPI ISX	<u>24</u>
Cummins STC	<u>24</u>
Cummins Top Stop	<u>25</u>
Cummins XPI (Pegasus)	<u>25</u>
Cummins XPI ISX15	<u>25</u>
Delphi Paccar EUP	<u>25</u>
Detroit 92 Electronic	<u>26</u>
Detroit Diesel DD13/15	<u>26</u>
Detroit Diesel E3 (4 pin)	<u>26</u>
Detroit Diesel N3	<u>26</u>
Detroit N, C & 92 Series Mechanical	<u>27</u>
Detroit Series 60 (5000 and above)	<u>27</u>
Dodge Cummins 6.7L Common Rail 2007.5-2015	<u>27</u>
Ford 6.7L Powerstroke with grey arm 2015-2019	<u>27</u>
Ford 6.9/7.3 IDI Mechanical	<u>28</u>
Ford 7.3L Powerstroke AA	<u>28</u>
Ford 7.3L Powerstroke AB	<u>28</u>
Ford 7.3L Powerstroke AD	<u>28</u>
Ford 7.3L Powerstroke AE	<u>29</u>
GM 6.2 & 6.5 Mechanical	<u>29</u>
International DT466	<u>29</u>
John Deere Denso	<u>29</u>
John Deere Denso CR	<u>30</u>
L'Orange	<u>30</u>

Table of Contents

Product	Page
Mack EUP	<u>30</u>
Mercedes MBE4000	<u>30</u>
Mercedes Sprinter 2001-2006 04451062 0986435129 04451063 0986435109	<u>31</u>
Mercedes Sprinter Late 2007-2010	<u>31</u>
Navistar DT466 BA BB BC BD BE BF	<u>31</u>
Navistar DT466 BI BJ BN BP	<u>31</u>
Navistar G2.9 DT466/DT570/Maxxforce	<u>32</u>
Volvo 2 Pin	<u>32</u>
Volvo 4 Pin	<u>32</u>
Volvo with Ceramic Solenoid	<u>32</u>
VW 1.9L TDI	<u>33</u>
TURBOCHARGER CORES	<u>34</u>
2015+ Ford 6.7L F250 Powerstroke	<u>35</u>
Automotive	<u>35</u>
Caterpillar 3406E	<u>35</u>
Caterpillar ACERT C13/C15 High Pressure	<u>35</u>
Caterpillar ACERT C13/C15 Low Pressure	<u>36</u>
Caterpillar C7/C9	<u>36</u>
Chevrolet 6.5L GM8 Only	<u>36</u>
Chevrolet Duramax 6.6L (LB7) 2001-2004.5	<u>36</u>
Chevrolet Duramax 6.6L (LB7) 2001-2004.5 California Emissions	<u>37</u>
Chevrolet Duramax 6.6L (LBZ) 2006-2007	<u>37</u>
Chevrolet Duramax 6.6L (LLY) 2004.5-2005	<u>37</u>
Chevrolet Duramax 6.6L (LML/LGH) 2011+	<u>37</u>
Chevrolet Duramax 6.6L (LMM) 2008-2011	<u>38</u>
Chevrolet Duramax L5P	<u>38</u>
Cummins Dodge Ram HE300VG + HE351VE	<u>38</u>
Cummins Electronic VGT Turbocharger Actuator Core	<u>38</u>
Cummins Holset HE300VG / HE351VE Industrial	<u>39</u>
Cummins Holset HE341VE	<u>39</u>
Cummins Holset HT60	<u>39</u>

Table of Contents

Product	Page
Cummins Holset HX55W	39
Cummins Holset HX60W	40
Cummins Holset HX80 / HX82 / HX83	40
Cummins Holset Wastegated HX30 / HX30W	40
Cummins Holset Wastegated HX35W, HX40W, WH1E, WH1C	40
Cummins ISX Holset HE431VE / HE451VE / HE400VG	41
Cummins ISX Holset HE500VG / HE551VE / HE561VE	41
Cummins M11 Holset HX55	41
Cummins ISX Holset HE551V	41
Daimler Detroit Diesel DD15	42
Detroit 14L	42
Detroit Series 60 12.7L Wastegated	42
Detroit Series 60 Non-Wastegated	42
Dodge 5.9L Cummins HE341CW	43
Dodge Cummins 5.9L Holset HE351CW 2004.5-2007	43
Ford 6.0L	43
Ford 6.4L Dual	43
Ford 6.4L Turbo Actuator	44
Ford 6.9/7.3 IDI	44
Ford 7.3L Powerstroke GTP38	44
Ford 7.3L Powerstroke GTP38 Mid Year 1998- 1999	44
Ford Powerstroke 6.7L Scorpion	45
Ford Powerstroke 6.7L Single Outlet	45
Holset Cummins ISX HX55	45
Holset Detroit Diesel DD15 HX55	45
Holset HE400/451 Volvo Mack	46
Holset HE531VE Detroit Diesel	46
Holset Non-Wastegated H2C / H2D / H2E	46
Holset Non-Wastegated H1C / H1E	46
Holset Non-Wastegated HT3B	47
Holset Paccar HE500VG / HE531VE	47

Table of Contents

Product	Page
International 6.0L VT 365 Industrial/Commercial App	<u>47</u>
International DT466E Borg Warner B2V	<u>47</u>
International DT466E Borg Warner S300V	<u>48</u>
International MaxxForce Twin Turbos 9 / 10 / 11 / 13 / 15	<u>48</u>
Mack BWTS E7	<u>48</u>
Mack S430V	<u>48</u>
Marine	<u>49</u>
Mercedes Sprinter w/actuator	<u>49</u>
Nissan Titan Cummins Twin Turbo	<u>49</u>
New - Rebuilt Turbochargers & Pumps & Injectors	<u>49</u>
New - Rebuilt Turbochargers & Pumps & Injectors	<u>50</u>
Cummins EGR Valve	<u>51</u>
Cummins ISX Solenoid	<u>51</u>
Detroit Accessory Drive	<u>51</u>
Detroit EGR Valve	<u>51</u>
Detroit Series 60 Gear Pump	<u>52</u>
Detroit VPOD Cores	<u>52</u>
Ford 7.3 Throttle Shaft	<u>52</u>
Holset Actuator Control Valve	<u>52</u>
ECMs	<u>53</u>
Caterpillar 120 Pin	<u>54</u>
Caterpillar 40 Pin	<u>54</u>
Caterpillar 70 Pin	<u>54</u>
Cummins Celect & Celect Plus	<u>54</u>
Cummins ISX	<u>55</u>
Cummins ISX15	<u>55</u>
Detroit DDEC III and IV ECM	<u>55</u>
Detroit Diesel DDEC III	<u>55</u>
Detroit Diesel DDEC IV	<u>56</u>
Detroit Diesel DDEC V	<u>56</u>
Duramax LLY FICM	<u>56</u>

Table of Contents

Product	Page
Ford 6.0L FICM	<u>56</u>
Ford 7.3L IDM	<u>57</u>
Freightliner CPC4 Module	<u>57</u>
International Maxxforce	<u>57</u>
International Maxxforce DT	<u>57</u>
Paccar MX13	<u>58</u>
V-Mac & II	<u>58</u>
V-Mac E7	<u>58</u>
Volvo Mack MP7, MP8, D12, D13	<u>58</u>