





## Our Story

In **CÂPÂ** as well as in the tropics where we live, we try to express diversity through our pieces. With it the innumerable textures and colors that bring us closer to being timeless pieces that, through manual and artisan work, highlight the qualities of life.

**CÂPÂ** Jewelry was founded in Colombia at the end of 2010 by the architect and jeweler **Catalina Patiño**. Each piece is handmade by a small group of talented artisans, recovering traditions used by our ancestors and under the philosophy of local manufacturing.



**At CÂPÂ we seek a balance between doing things well and enjoying our work.**

When we created the brand we knew we wanted to design and build directly *-without intermediate tools such as the computer-* to have an enriching experience that would allow the connection between ideas and creation with our hands. In the process of building our aesthetic, handmade and imperfect, we move away from everything that regularizes geometry, and gives space to spontaneous and natural events.

**Inspiration comes from everything around us.** We imagine how we want a piece to be, we draw it, we model it in wax, and in this way, it begins to have life. We are curious and meticulous, we love details, as well as experimenting with different materials and developing new processes.



# / Metals /

At CÂPÂ we care about the origin of our materials.  
The gold and silver we use comes from two sources:

**The first is recycled silver and gold from old pieces** — Our supplier works as a place where people sell the gold from old jewelry and we buy it to make our rings.

**The second is Fairmined Gold** — Whenever the customer wants, we can elaborate the rings under this label, where we buy the gold from certified mines that have a proper extraction process.

We are also very motivated when our customers bring in old pieces to reuse them in the making of the CÂPÂ pieces.



FAQ



# / Gemstones /

Our stones are unique, imperfect and sometimes rustic. In our catalog we have polished stones or rough stones.

In our catalog we have polished stones or rough stones. We prefer stones in which we can find singular features that connect with the people who wear them, features that show that we are all different and that no two elements of nature are completely alike.

That is why our stones have characteristics that make them different, such as natural inlays of other minerals, some rough, others with tones and shapes that make their beauty stand out.





# /Classics

These are rings that we have been making for years and have become CÂPÂ's signature designs.

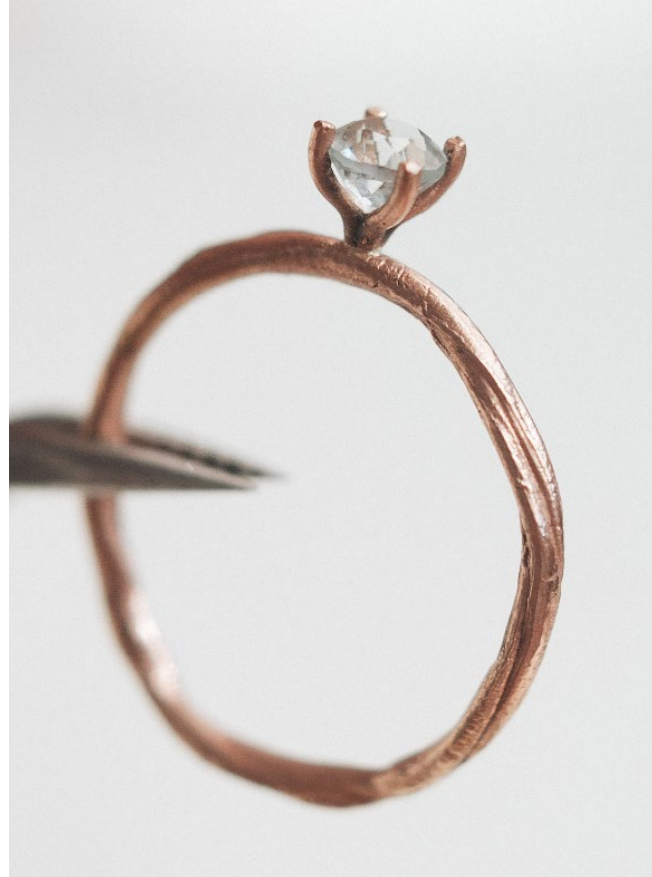
These rings, although rarely the same due to variations in stone or band appearance, are derived from a particular CÂPÂ piece and can be identical to each other.

These rings are essential CÂPÂ designs that will always be available in our catalog.

Classics



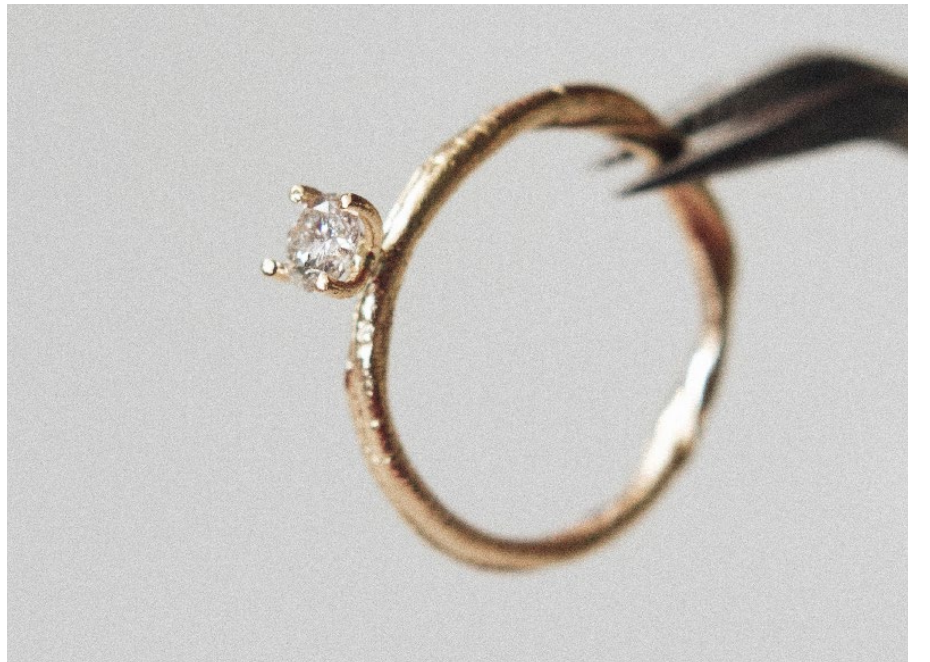
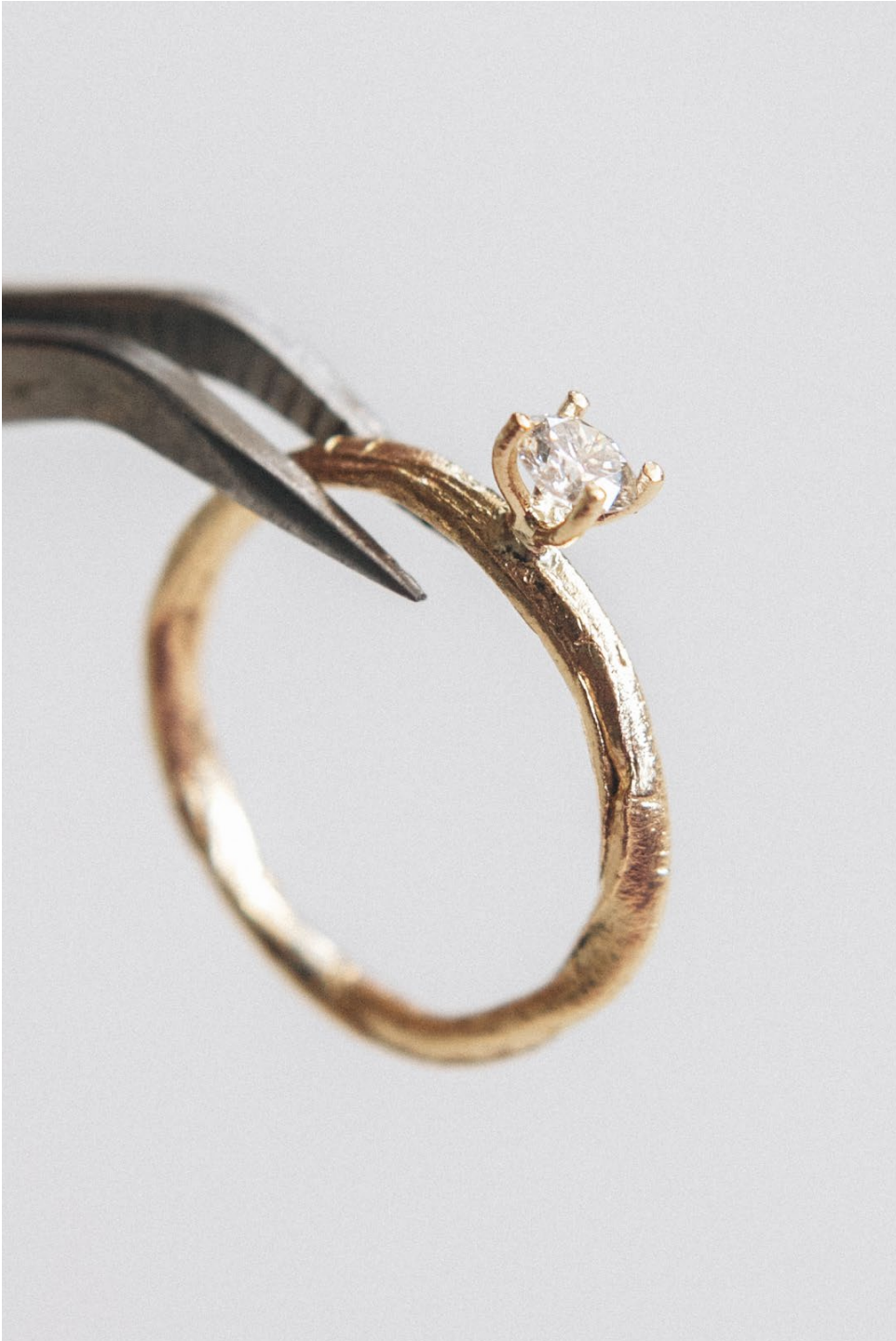
*/ Ramita Mar / Rama Mar / Ramita Mineral / Ramita de Carbono / La Plata & El Mar / Ramita Alsio / Ramita Agua Clara / Ramita Berilo / Ramitas Azul Profundo / Ramitas Mar / Vórtice Mineral / Vórtice Mineral Oscuro / Coral Berilo / Vórtice Berilo / Ramillo / Facetado Marino / Facetado Mineral / Facetado Mar / Mar Blanco / Carbono Incrustado / Arena Rústica / Ramita de Azúcar / Vainita de Carbono en V / La Plata & El Mar / Citrón / Granate Profundo / Rama / Ramita en V / Cutza / Facetado Plano / Facetado / Arena / Arena Rústica / Arena Negra / Tesela / CÂPÂS / Duna /*

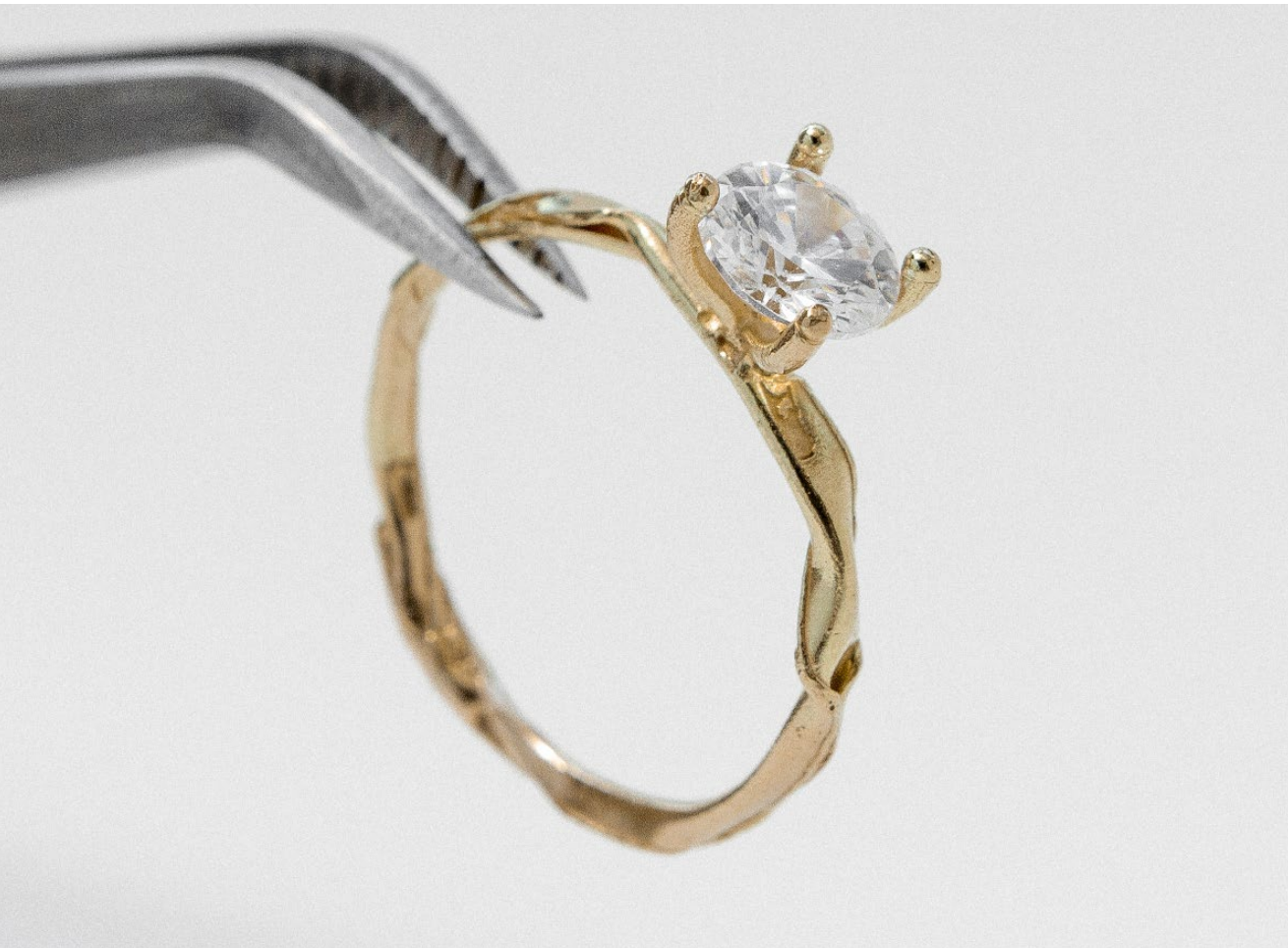
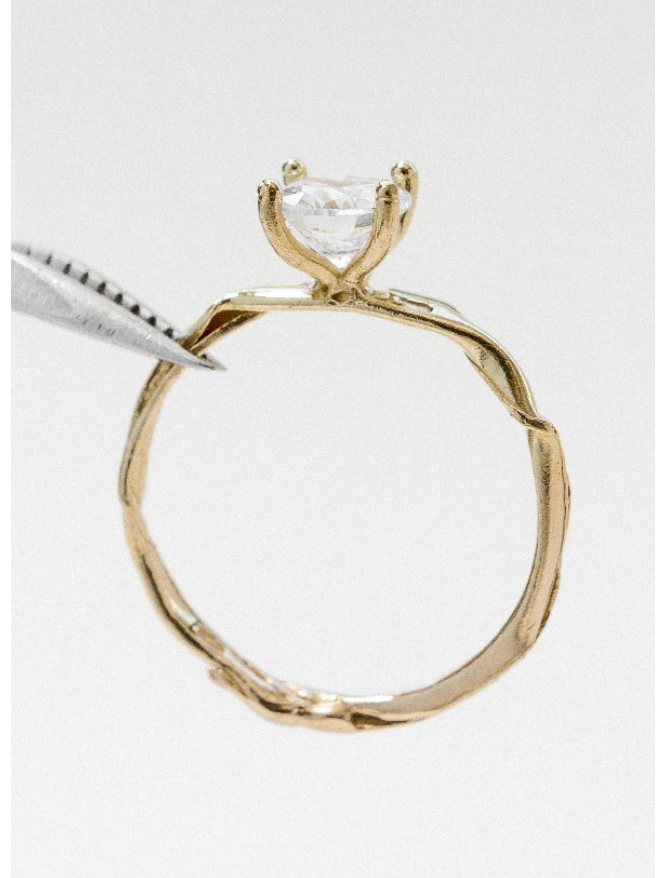


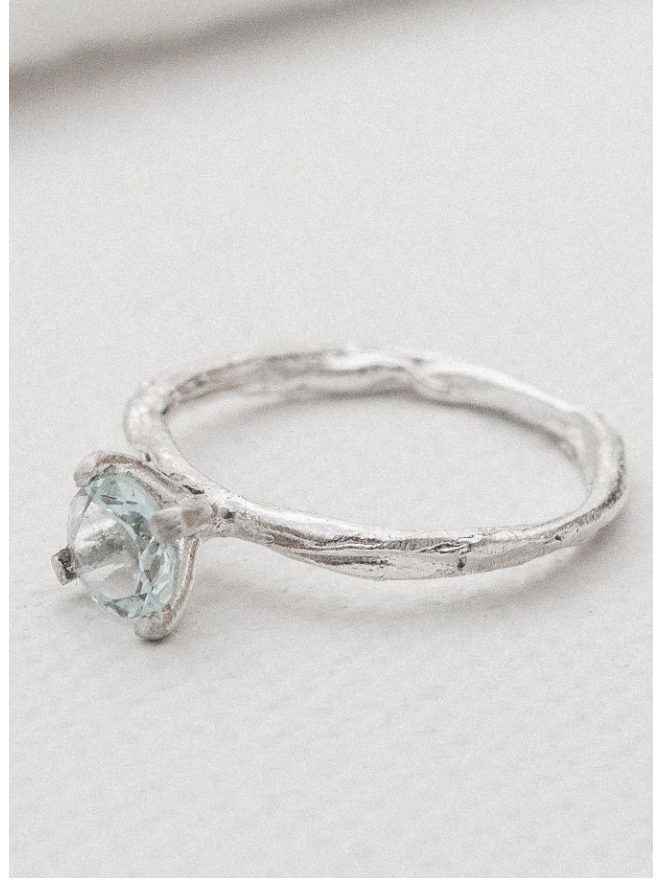






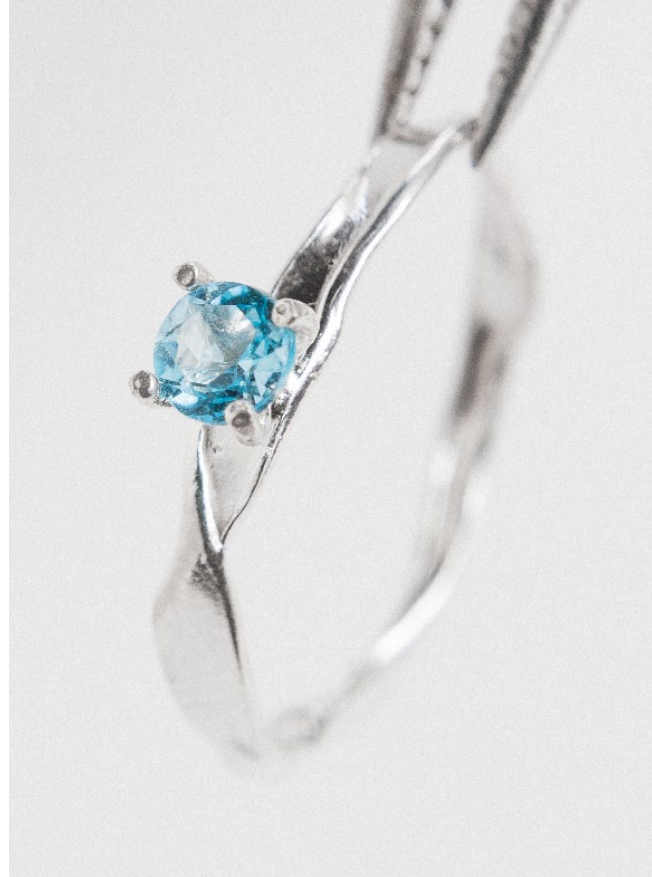
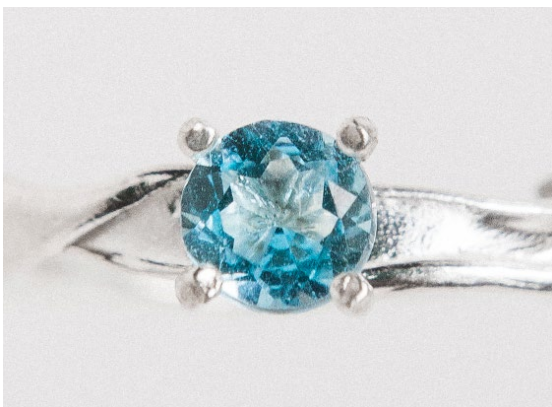


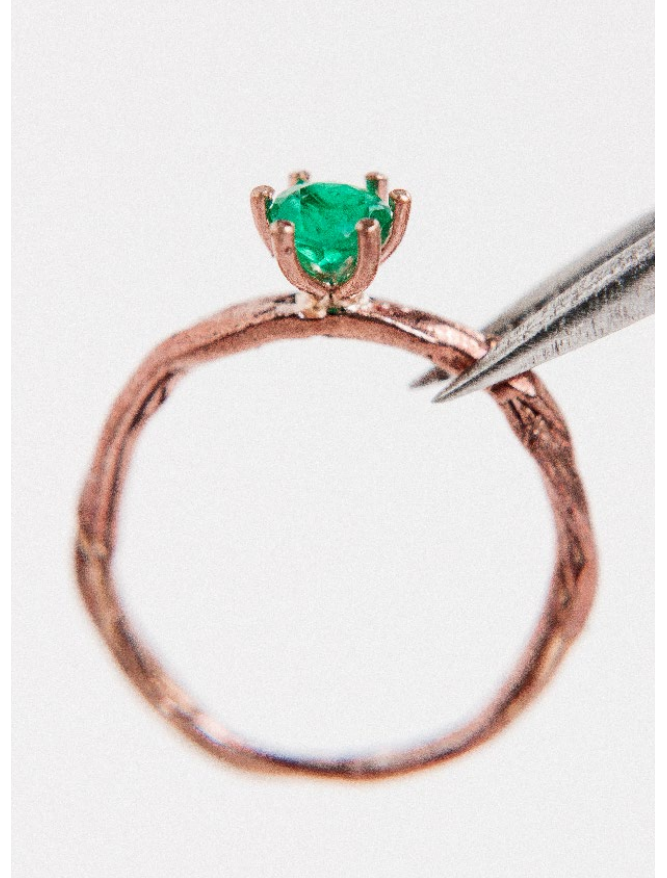




Classics

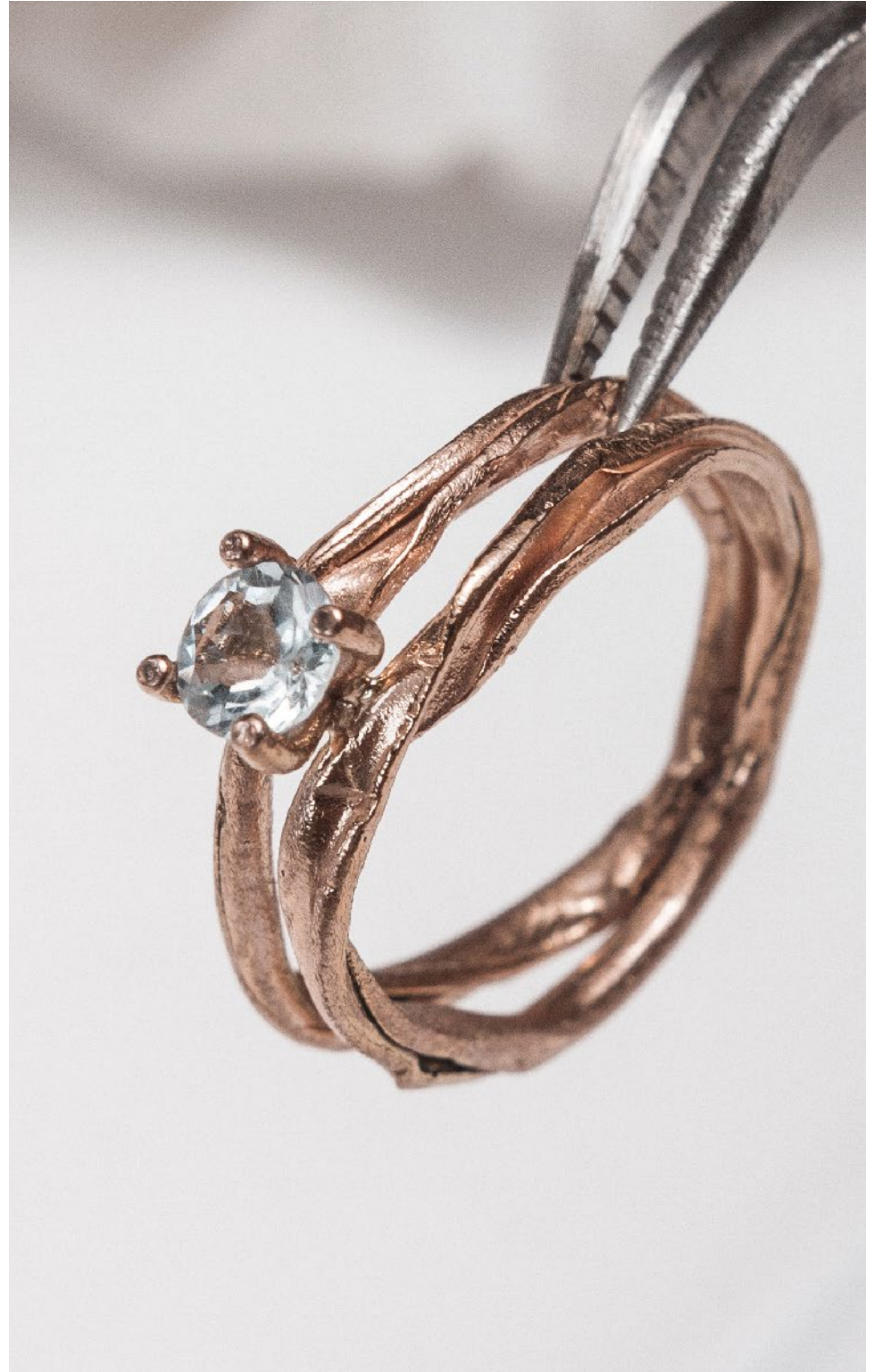




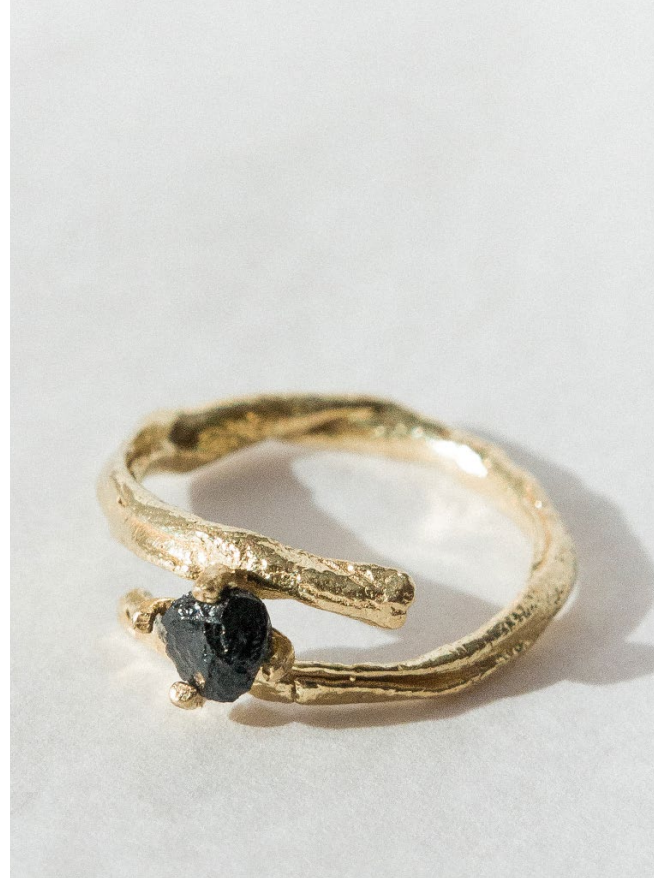






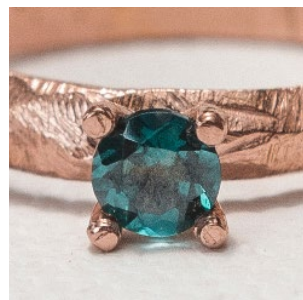
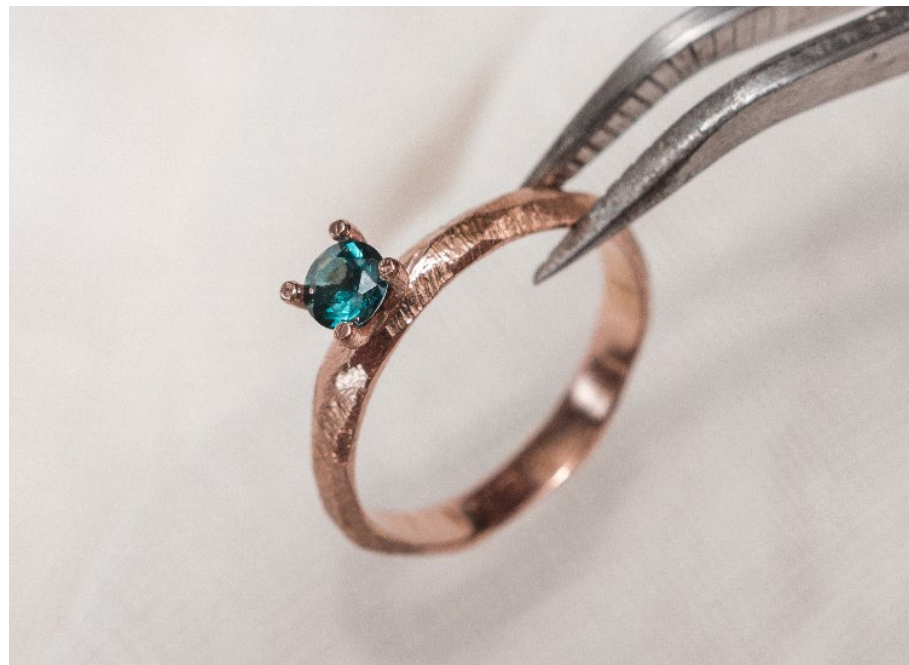


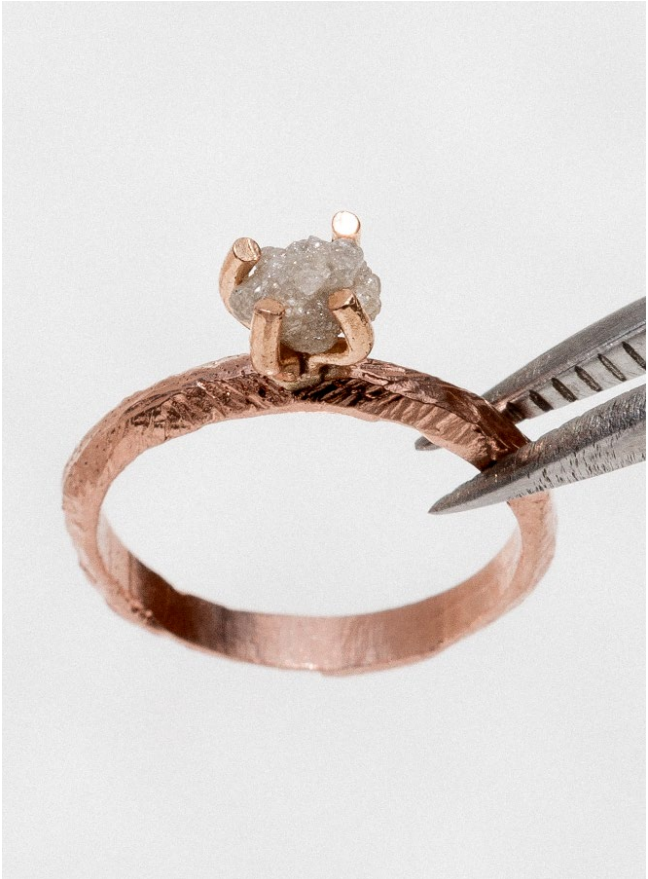






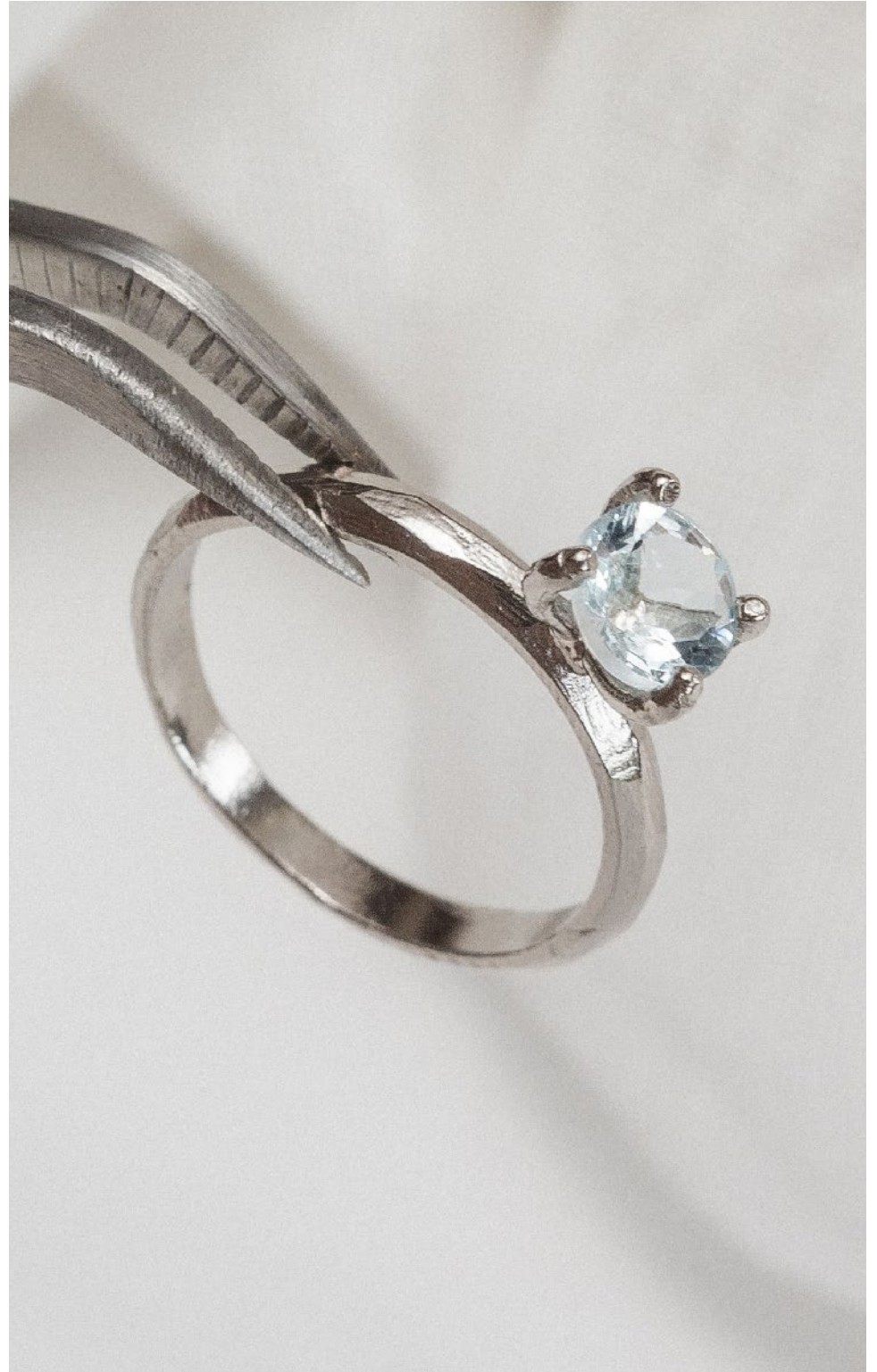










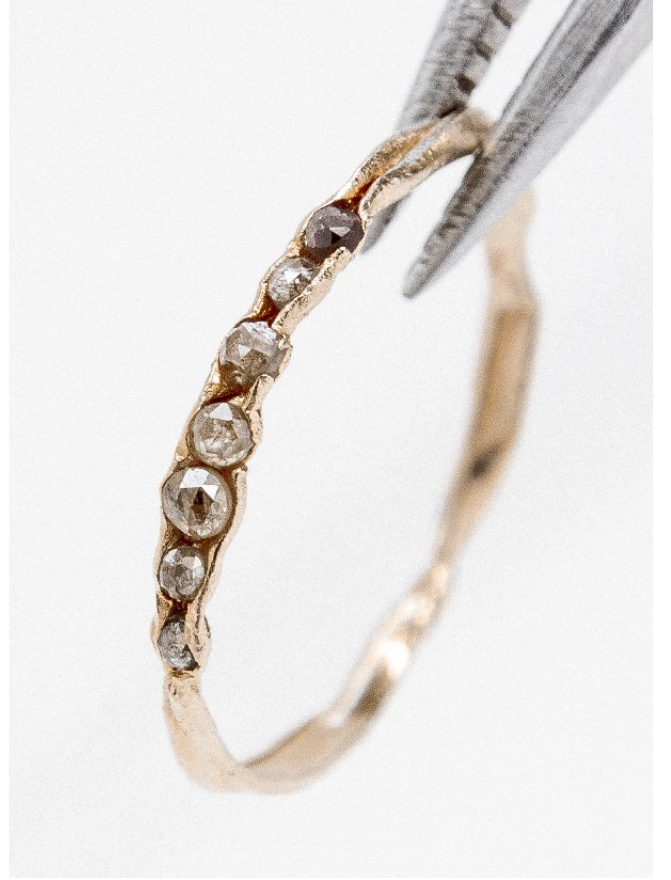




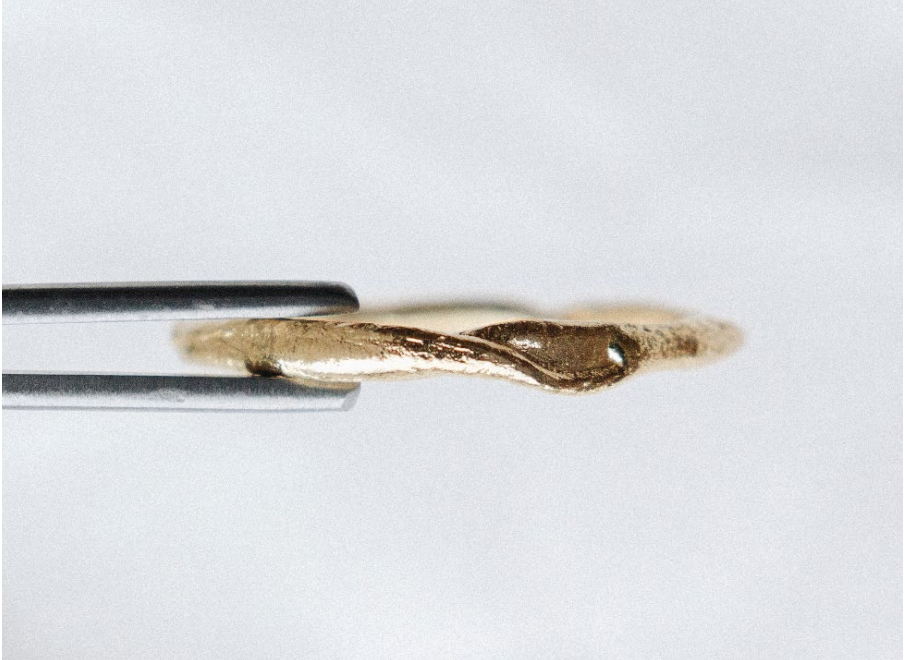








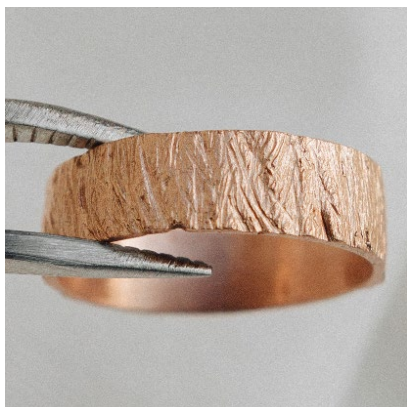




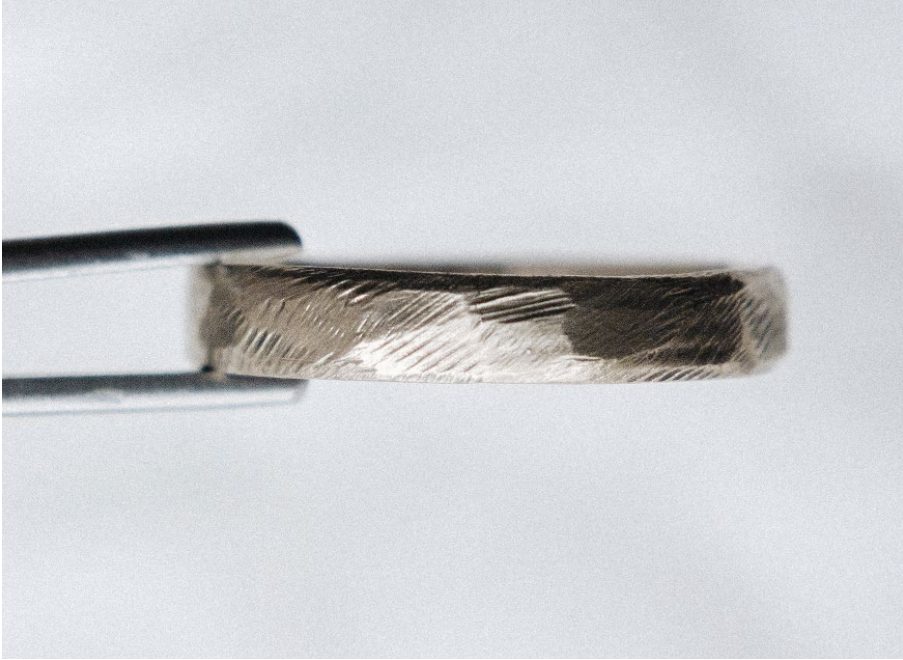














Classics





















/ Ramita Mar / Rama Mar / Ramita Mineral / Ramita de Carbono  
/ La Plata & El Mar / Ramita Alsio / Ramita Agua Clara / Ramita  
Berilo / Ramitas Azul Profundo / Ramitas Mar / Vórtice Mineral  
/ Vórtice Mineral Oscuro / Coral Berilo / Vórtice Berilo / Ramillo  
/ Facetado Marino / Facetado Mineral / Facetado Mar / Mar  
Blanco / Carbono Incrustado / Arena Rústica / Ramita de Azúcar  
/ Vainita de Carbono en V / La Plata & El Mar / Citrón / Granate  
Profundo / Rama / Ramita en V / Cutza / Facetado Plano / Facetado  
/ Arena / Arena Rústica / Arena Negra / Tesela / CÁPÁS / Duna /



# */One of a kind*

They are unique pieces that we develop under specific customer requirements, no two pieces are completely alike.

These pieces are inspired by different elements and keep the design style of the brand.

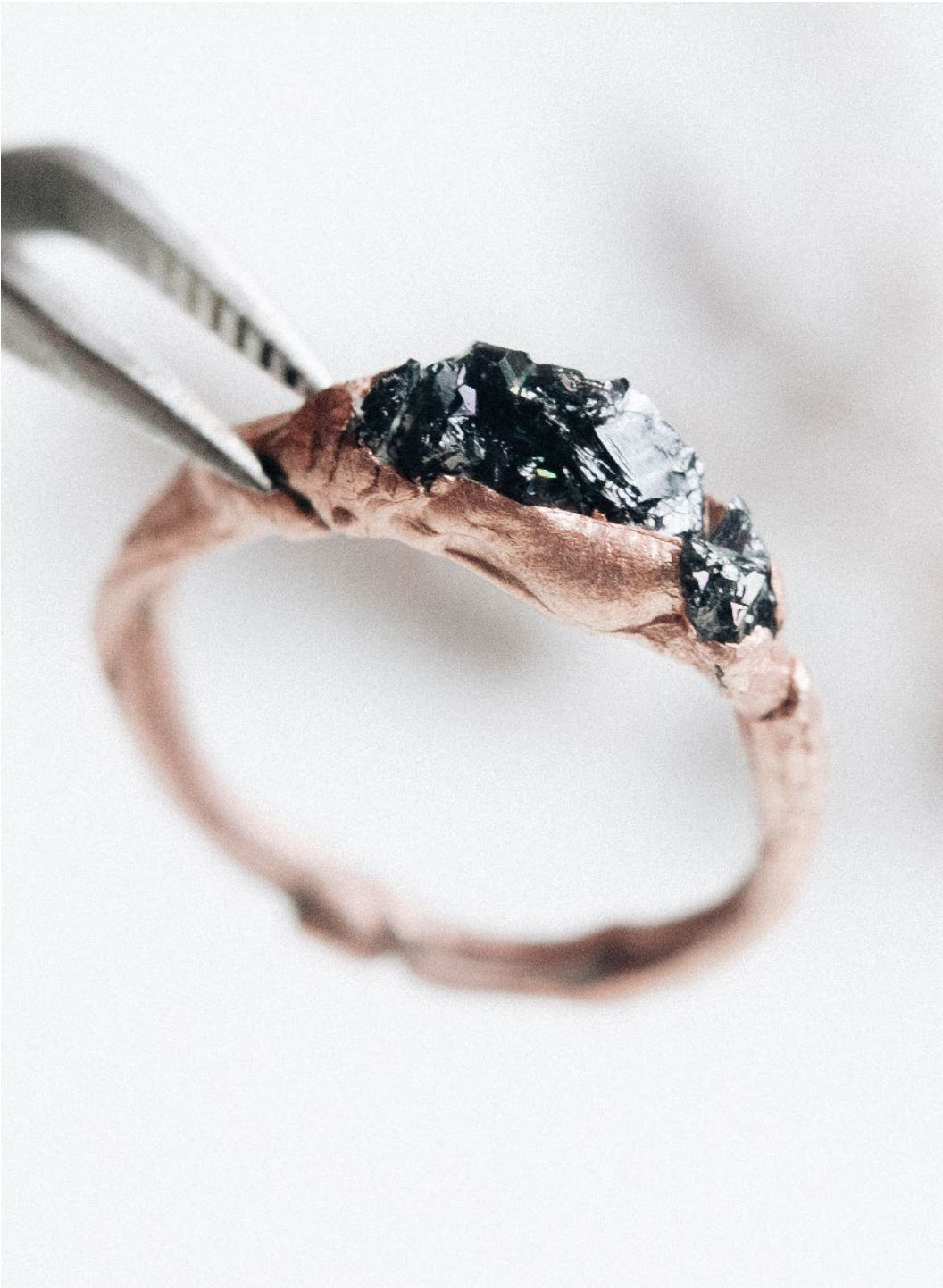
They may resemble other pieces of the brand and may even be part of a series, but no two pieces are completely identical.

One of a kind



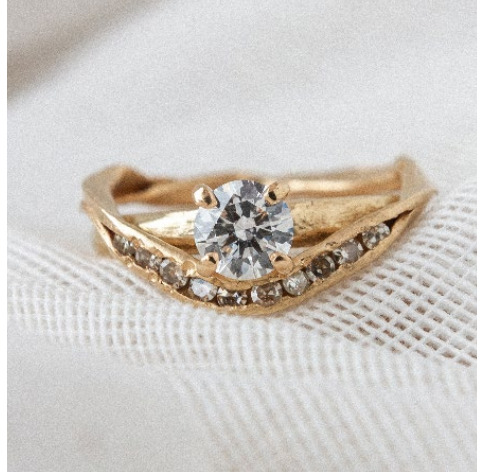
*/ Cumbre Negra / Ramita Marrón / Ramita en V / Vaina de Carbono / Hielo / Ramita Salmón / Bali / Ramita Nebulosa / Libertad / Vainita Nebulosa / Nebulosa Mineral / Vaina de Berilo / Cumbre de Carbono / Enramada /*

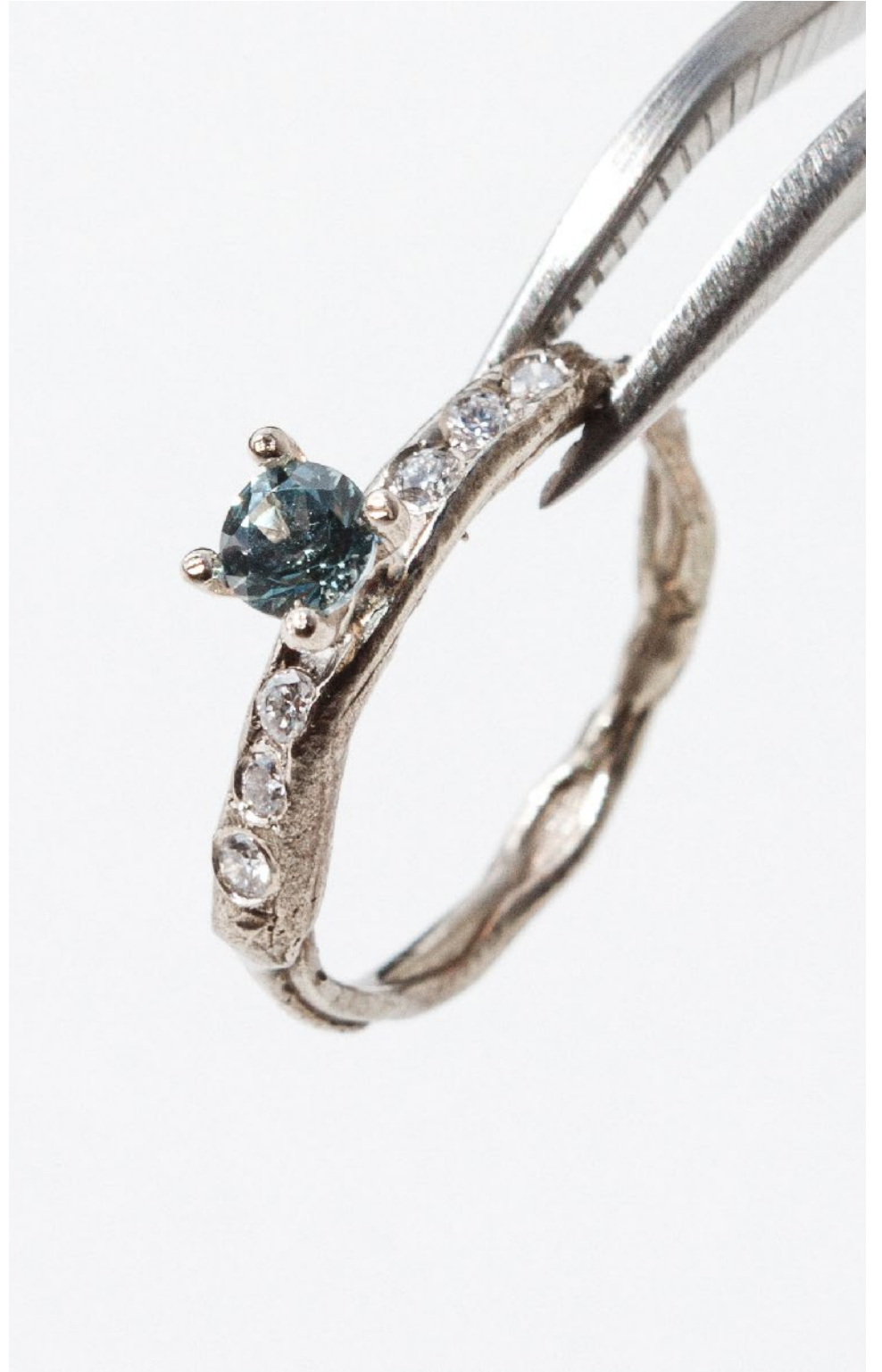
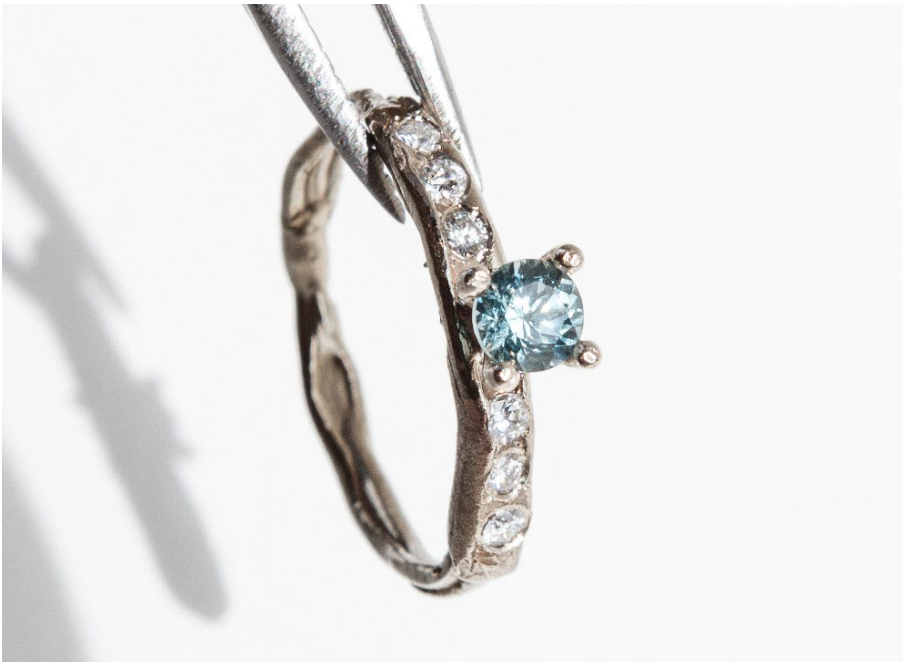


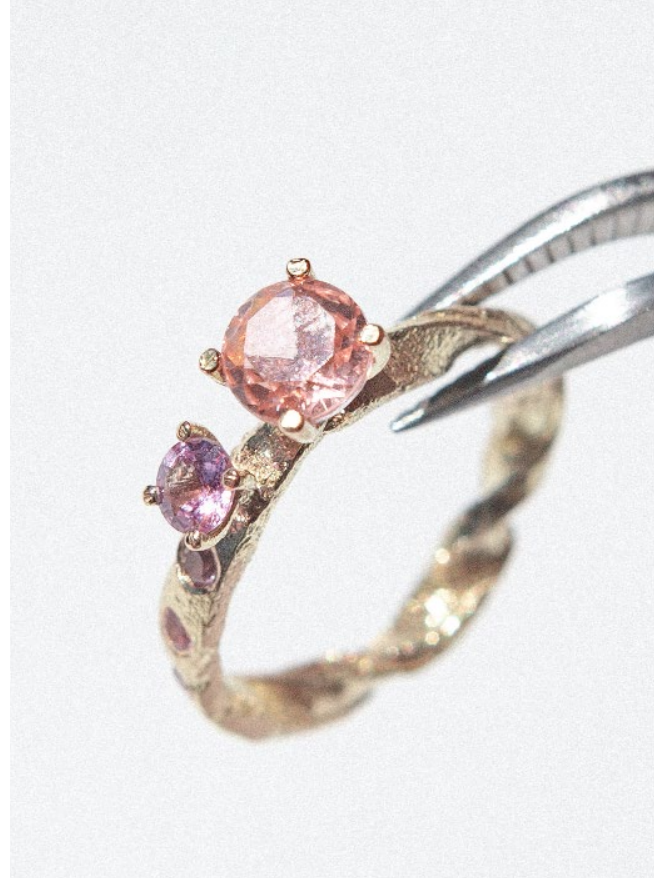








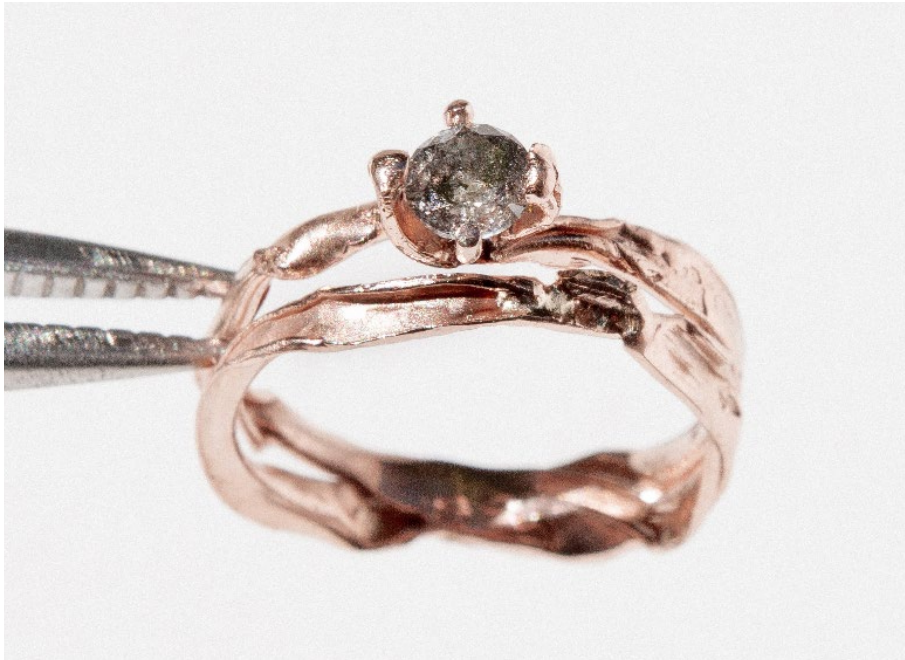




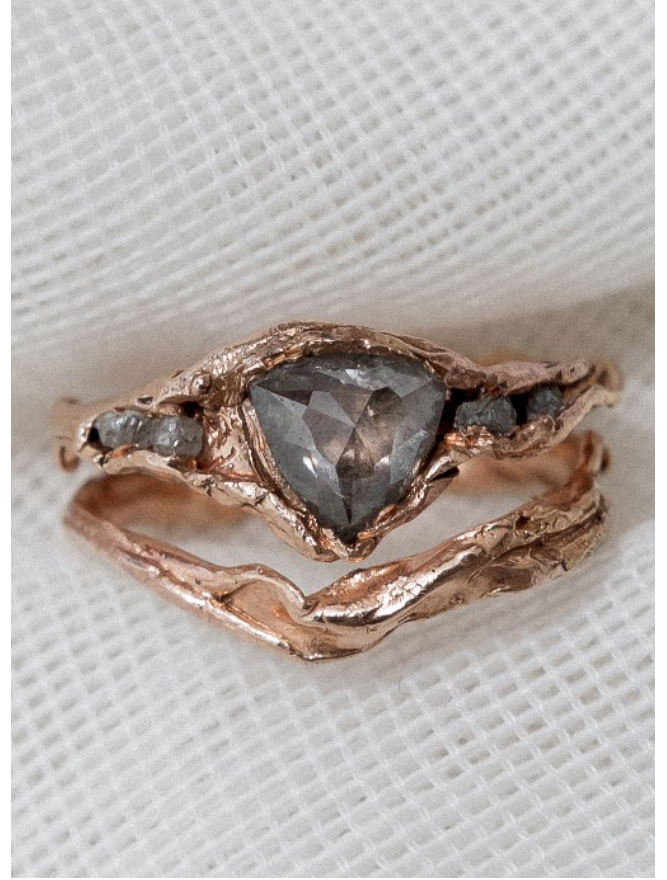




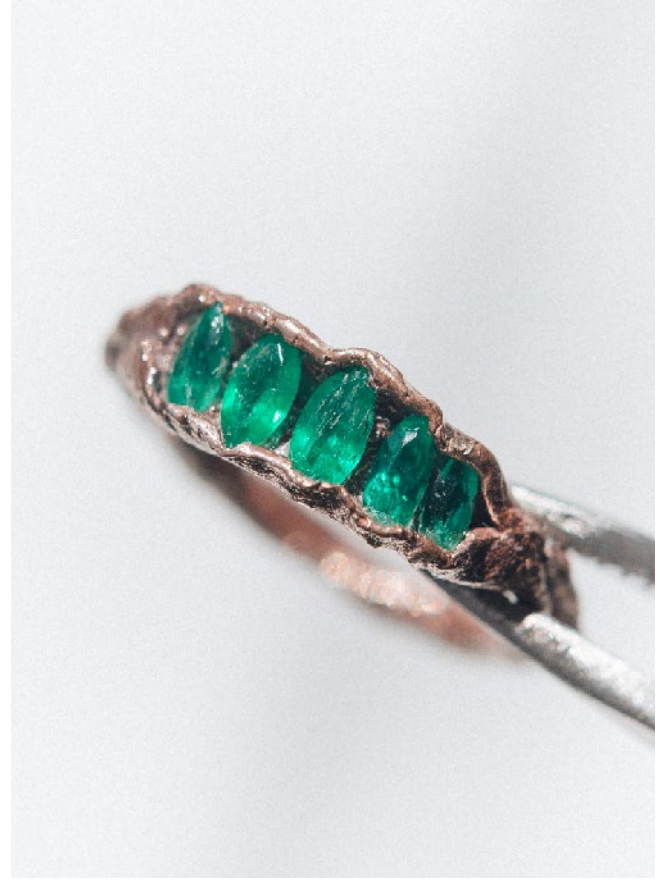




One of a kind











/ Cumbre Negra / Ramita Marrón / Ramita en V / Vaina  
de Carbono / Hielo / Ramita Salmón / Bali / Ramita  
Nebulosa / Libertad / Vainita Nebulosa / Nebulosa Mineral  
/ Vaina de Berilo / Cumbre de Carbono / Enramada /





www.  
capajewelry.  
com

**CAPA Design LLC**

Envigado, Antioquia, Colombia  
Km 17 Vía las Palmas  
Indiana Mall — LC. 120

PBX: +57 (4) 479 60 63  
+57 312 491 2069  
info@capajoyeria.com  
Instagram @capajoyeria

All designs that are in this publication are the exclusive property of CAPA Design LLC. The partial or total reproduction of any of them constitutes a violation of intellectual property and will bring the sanctions contained in the law.

CAPA JOYERÍA © 2021