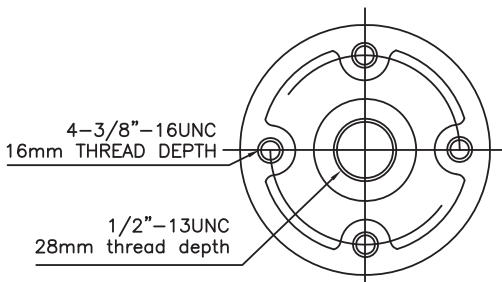


TECHNICAL REQUIREMENTS

Cantilever Strength:	1500# [6.8KN]
Tensile Strength:	3000# [13.7KN]
Torsion Strength:	3500# [0.41KN.M]
Compression Strength:	20000# [91KN]
NEMA Voltage Rating:	7.2kV
60 Hertz Withstand - Dry:	26kV
60 Hertz Withstand - Dew:	24kV
Impulse Withstand:	75kV
Glaze:	ANSI 70 Light Grey
Applicable Standard:	ANSI C29.10 - 1989



Meister International, LLC

P.O.Box 338 Ross, Ohio 45061 USA
 Tel: 513-923-2712 • Fax: 513-923-1978 • Email: sales@meisterintl.com
 www.meisterintl.com

**PART NO. A20-2
 INDOOR BUS SUPPORT**