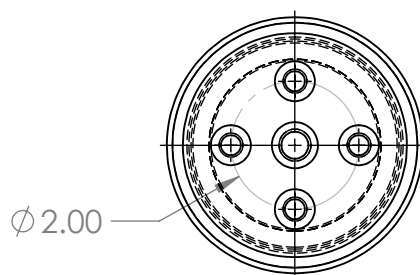
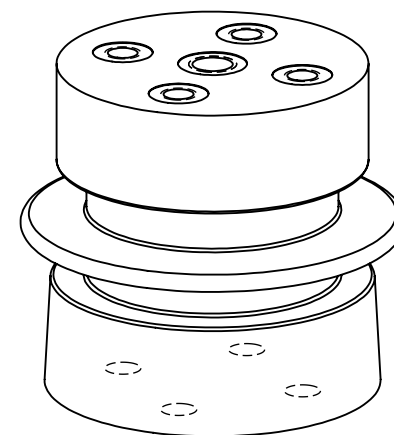
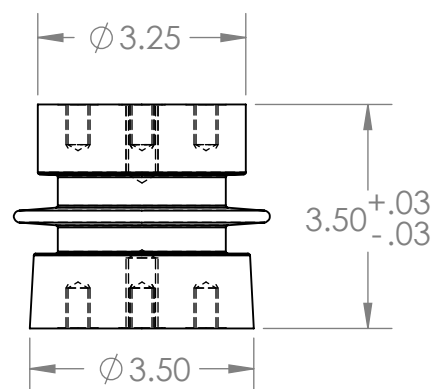


TECHNICAL REQUIREMENTS:

| | |
|------------------------|-------------------|
| CATILEVER STRENGTH | 1000# [4.55KN] |
| TENSILE STRENGTH | 2000# [9.1KN] |
| TORSION STRENGTH | 2500# [0.29 KN.M] |
| COMPRESSION STRENGTH | 20000# [89KN] |
| NEMA VOLTAGE RATING | 4.8KV |
| 60HERTZ WITHSTAND-DRY | 19KV |
| 60 HERTZ WITHSTAND-DEW | 15KV |
| IMPULSE WITHSTAND | 60KV |
| APPLICABLE STANDARD | ANSI C29.10-1989 |



| REV. #: | REVISED BY: | DESCRIPTION: |
|--|------------------|-----------------------------|
| | | INDOOR BUS SUPPORT |
| | | |
| | | |
| MATERIAL CYCLOALIPHATIC EPOXY FINISH | SIZE A | PART NO. A20-1-OC |
| | | REV |
| DO NOT SCALE DRAWING | SCALE: NTS | WEIGHT: 2.35 LBS |
| | | SHEET 1 OF 1 |