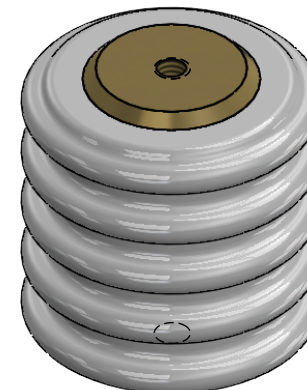
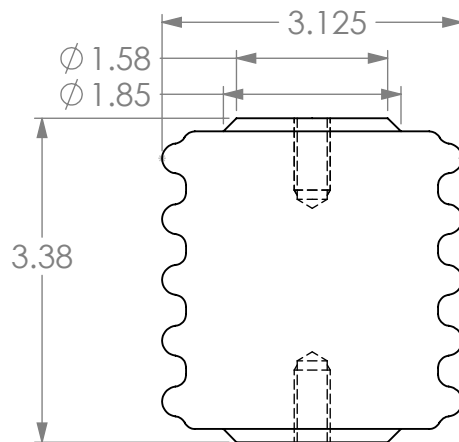
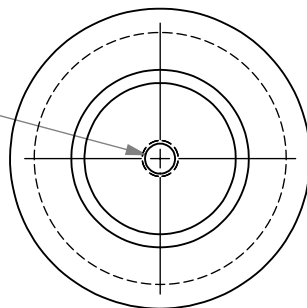


2X BRASS INSERT  
 $\phi$  .31  $\nabla$  .94  
 3/8-16 UNC  $\nabla$  .75



TECHNICAL REQUIREMENTS:  
 1: CANTILEVER STRENGTH: 515# [2.3 KN]  
 2: TENSILE STRENGTH: 1925# [8.6KN]  
 3: COMPRESSION STRENGTH: 10000# [44.5 KN]  
 4: NEMA VOLTAGE RATING: 5 KV  
 5: IMPULSE WITHSTAND: 60 KV BIL  
 6: CREEPAGE DISTANCE 5"  
 7: GLAZE: ANSI 70 LIGHT GREY  
 8: APPLICABLE STANDARD: ANSI C29. 10-1989



UNLESS OTHERWISE SPECIFIED, TOLERANCE LIMITS ARE:  
 FRACTIONS : +/- 1/64  
 2 PLACE DECIMALS: +/- .02  
 3 PLACE DECIMALS: +/- .005

THE INFORMATION CONTAINED IN THIS DRAWING IS THE SOLE PROPERTY OF ALCON INC. ANY REPRODUCTION IN PART OR AS A WHOLE WITHOUT THE WRITTEN PERMISSION OF ALCON INC. IS PROHIBITED.

REV. #:  
 DRAWN BY: Anthony Dietz Date: 02/03/2021  
 REVISED BY: Name Date: 00/00/0000  
 MATERIAL: PORCELAIN & BRASS  
 FINISH:

DO NOT SCALE DRAWING

DESCRIPTION:

PORCELAIN STANDOFF INSULATOR

SIZE  
**A**

PART NO.  
 70155

REV

SCALE: NTS WEIGHT:

SHEET 1 OF 1