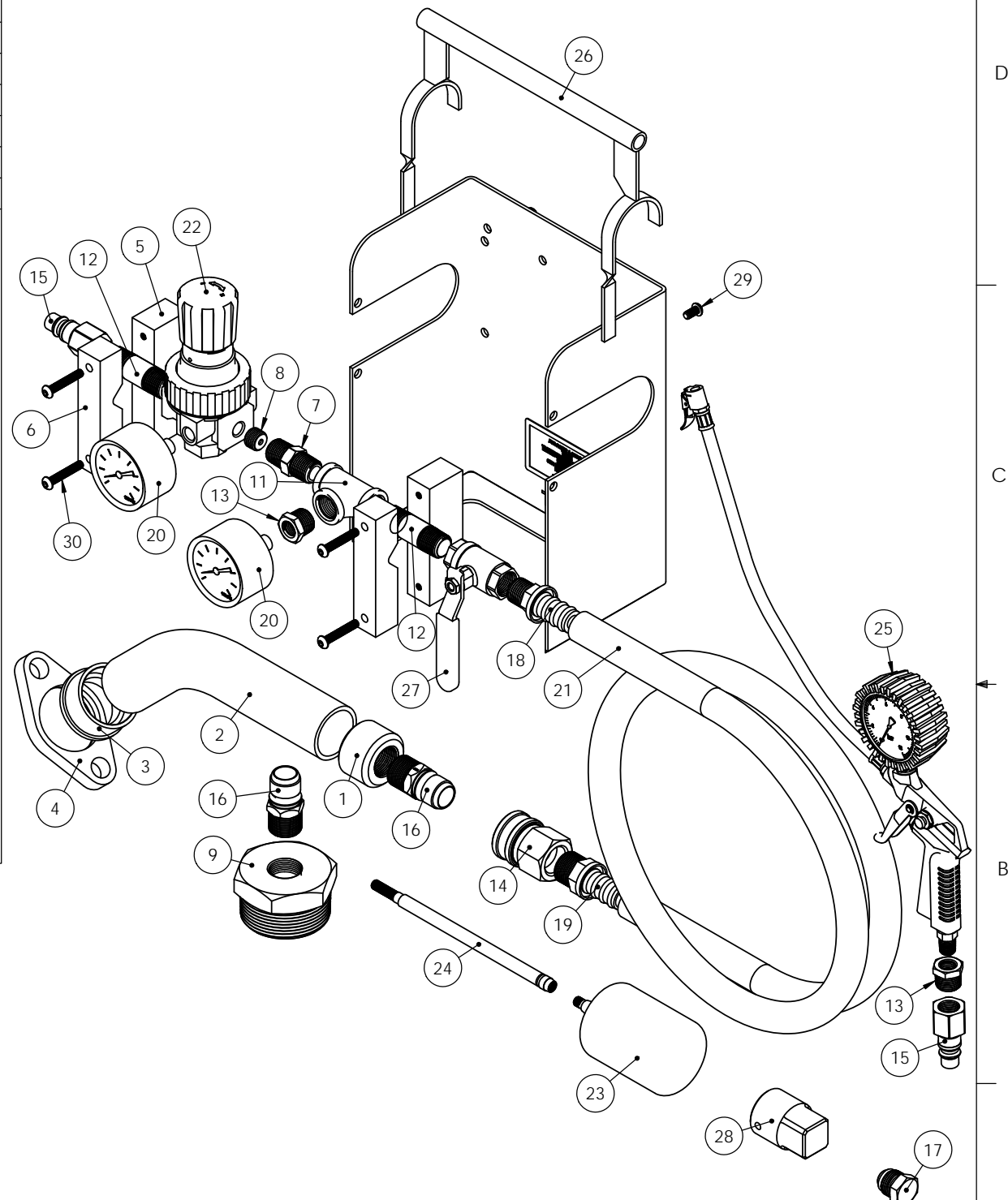


ITEM NO.	PART NUMBER	DESCRIPTION	QTY.	TESCO MATERIAL NUMBER	M/F	MATERIAL DESIGNATION	L	W	CUT NOTES
1	T66990-P1	BUSHING	1	ST2110	M	1018 Steel Round 2.00	1.350	N/A	DROP 17"=10 Pcs
2	T66990-P2	Schedule 40 Pipe	1	ST7295	F	A53 Schedule 40 Pipe 1.50	15.625	N/A	21"=16Pcs. P Rack
3	T66990-P3	FLANGE	1	ST2125	M	1018 Steel Round 2.50	1.310	N/A	DROP 16.5"=10Pcs
4	T66990-P4	GASKET	1	ST1540	M	1018 Steel Flat 1.00 X 2.75	4.930	N/A	N/A
5	T66990-P5	PIPE CLAMP THREADED HOLE	2	AL1310	M	6061 Aluminum Flat 1.00 X 1.50	4.600	N/A	SAW CUT
6	T66990-P6	PIPE CLAMP THRU HOLE	2	AL1290	M	6061 Aluminum Flat 1.00 X 1.00	4.600	N/A	SAW CUT
7	FT1420	ADAPTER, PIPE, 1/2 MALE X 1/2 MALE NPT	1	FT1420	M	STEEL	N/A	N/A	MODIFY-M1
8	FT1545	Plug, Hex Socket, 3/8 NPT	1	FT1545	M	STEEL	N/A	N/A	MODIFY-M1
9	FT1550	Plug, Hex Head, 2 1/2 NPT	1	FT1550	M	STEEL	N/A	N/A	MODIFY-M1
10	BX1003	Case, 1640 Pelican, Black	1						
11	FT1170	Tee 1/2 NPT Black	1						
12	FT1215	Nipple, Black, 1/2NPT X 2 1/2	2						
13	FT1250	Bushing, 1/2" NPT Male X 1/4" NPT Female, Black	2						
14	FT1335	COUPLER 3/4" FEMALE	1						
15	FT1515	HANSEN 55 PLUG, 1/2" NPT FEMALE	2						
16	FT1525	Plug, Quick Disconnect, 3/4" NPT Male	2						
17	FT1530	PLUG, 7/8-14 MALE JIC HOSE ADAPTER	1						
18	FT1620	HOSE FITTING 3/4" HOSE 1/2" PIPE MALE	1						
19	FT1625	Hose Fitting 3/4" Hose 3/4" Pipe Male	1						
20	GA1035	GAGE, 0-100 PSI, 1/4" NPT BACK MOUNT	2						
21	HO1050	Push Lok Hose, Gray, 6FT	1						
22	MS1003	1/2" Regulator 0-125 PSI	1						
23	MS1004	Rubber Test Ball Plug, Pneumatic, 3"	1						
24	MS1005	Tire Valve Extension, 7"	1						
25	MS1006	Tire Inflator w/Gage, 1/4" NPT	1						
26	T50150	CAGE	1						
27	T51800	INLET AND DUMP VALVE	1						
28	T66990-17	3/4 DR. TO 1.15 SQ PLUG DRIVER	1						
29	N647P21008	Socket Head Cap Screw, Button Head, 1/4-20 X 1/2	4						
30	N647P21024	Socket Head Cap Screw, Button Head, 1/4-20 X 1 1/2	4						

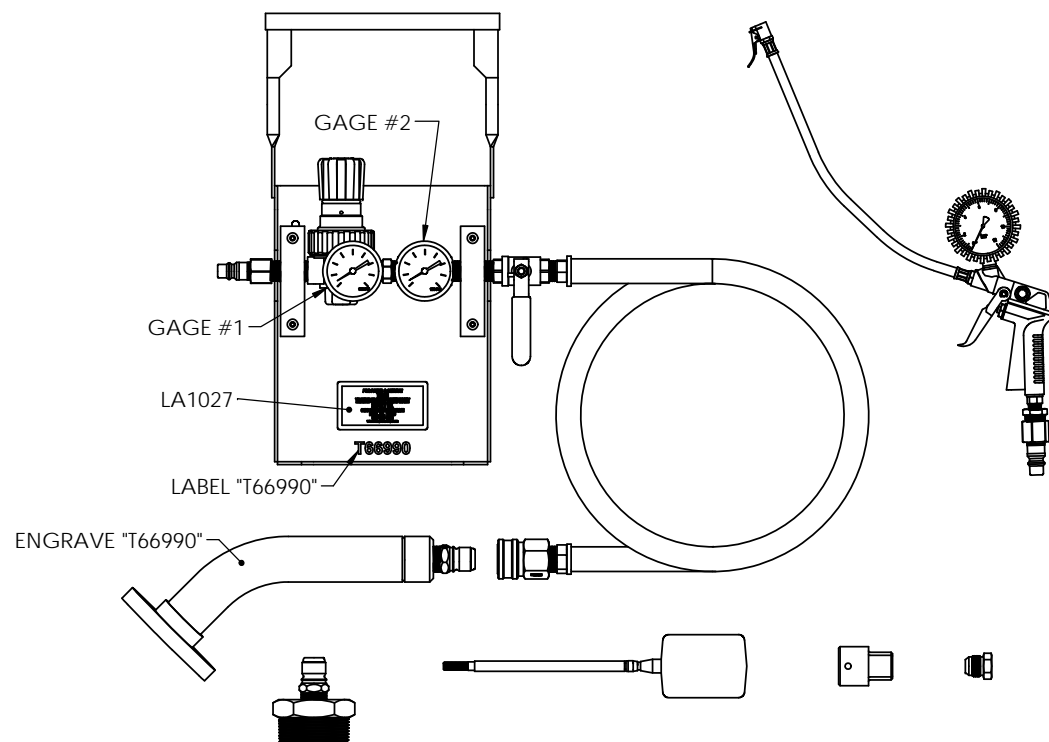


TEST ALL GAGES BEFORE ASSEMBLY ($\pm 1.5\%$ FULL SCALE)

TESTING PROCEDURE:

- NO OIL TO BE USED IN TESTING AIR VALVE
- 1. SET TESTING REGULATOR TO 8 PSI
- 2. SET AIR REGULATOR IN CAGE TO 30 PSI ON GAGE #1
- 3. INSTALL TEST PLUG
- 4. OPEN VALVE
- 5. SHOULD READ 10 PSI ON GAGE#2

****INCLUDE "GE EVO TURBOCHARGER LABYRINTH SEAL LEAKAGE TEST PROCEDURE" DOCUMENT WITH EACH KIT****



UNLESS OTHERWISE SPECIFIED:
 DEBURR AND REMOVE ALL SHARP EDGES
 DIMENSIONS ARE IN INCHES
 TOLERANCES:
 FRACTIONAL $\pm 1/64$
 ANGULAR: MACH $\pm 5^\circ$ BEND $\pm 1^\circ$
 ONE DECIMAL: .X = ± 0.1
 TWO PLACE DECIMAL: .XX = ± 0.01
 THREE PLACE DECIMAL: .XXX = ± 0.005

TRANSPORTATION EQUIPMENT SUPPLY COMPANY 8106 HAWTHORNE DRIVE ERIE, PA 16509 (814) 866-1952			
TOOL NAME GE LABYRINTH SEAL TURBO TEST KIT			
DWN BY CDS	DATE 8/2/2016	DWG. NO. T66990	REV
SIZE: B	SCALE: 1:8	WT: 47.23 lb	SHEET 1 OF 3

PROPRIETARY:
 THE INFORMATION CONTAINED IN THIS DRAWING IS THE SOLE PROPERTY OF TESCO. ANY REPRODUCTION IN PART OR AS A WHOLE WITHOUT THE WRITTEN PERMISSION OF TESCO IS PROHIBITED.