



***PROFILE  
DESIGN*** 

---

**DRV/GMR HANDLEBAR**

REVISION 01-12-18-2020

## INTRODUCTION

**Thank you for purchasing this Profile Design Handlebar. These instructions apply to the DRV/GMR aluminium handlebar.**

Please read these instructions thoroughly before attempting to install this item. Proper installation is required for compliance with Profile Design's warranty policy. If you are not familiar with installation of handlebars or their accessories, please seek the assistance of your local Profile design dealer by logging on to [www.profile-design.com](http://www.profile-design.com) and using "dealer search" or by calling Profile Design's customer service number p.# 888.800.5999.

**Note to Dealers: If you install this product for the consumer, please provide him/her with this owner's manual after installation.**

### Tools and materials required:

- Assembly compound such as Finishline Fiber Grip™

## Your Handlebar kit should contain:

- One (1) handlebar (aluminium)

## Components compatible with this Handlebar

- Any Profile Design Stem
- Sonic, Neosonic, Supersonic brackets

**If anything is missing from the Handlebar kit please contact your dealer.**

Please note that threaded areas have been pre-treated by Profile Design during production with a special blue thread locking compound. This special compound is easy to detect on the threads of all bolts provided. If you cannot detect this thread locking compound or you are re-installing the bolt, re-apply a suitable blue thread locking compound as available from Loctite® or another company before assembly.

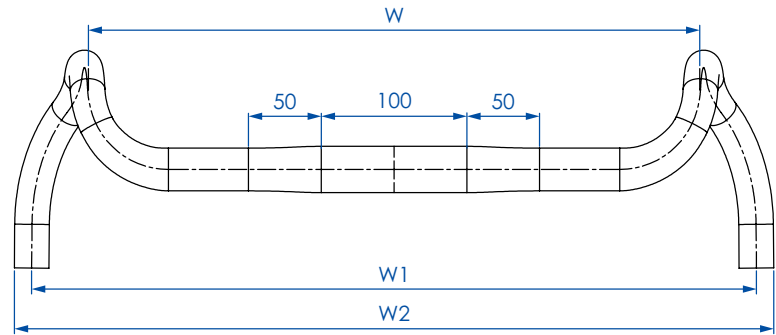
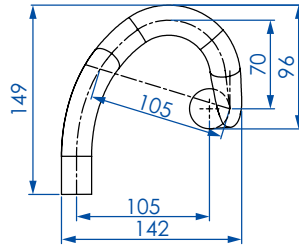
**WARNING: Periodically check the Handlebar for damage, particularly for scratches through the anodised coating (aluminium parts) or clearcoat (carbon parts) that could lead to degradation and weakening of the base material. Replace your AeroBar if you notice any damage from use or accident.**

# PART DRAWINGS

## DRV/GMR SERIES

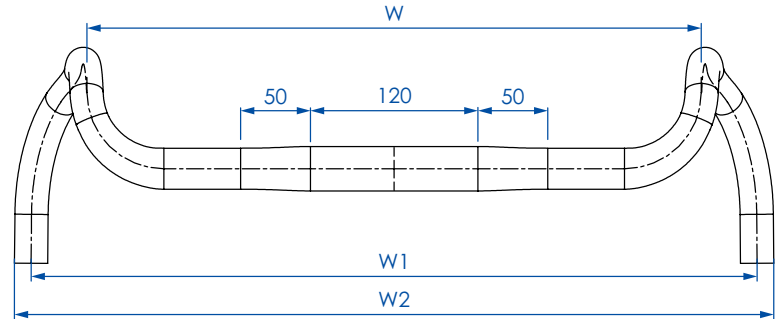
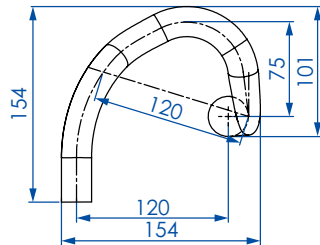
### 1/ZEROFIVE

W	W1	W2
360	438	461.8
380	458	481.8
400	478	501.8
420	498	521.8

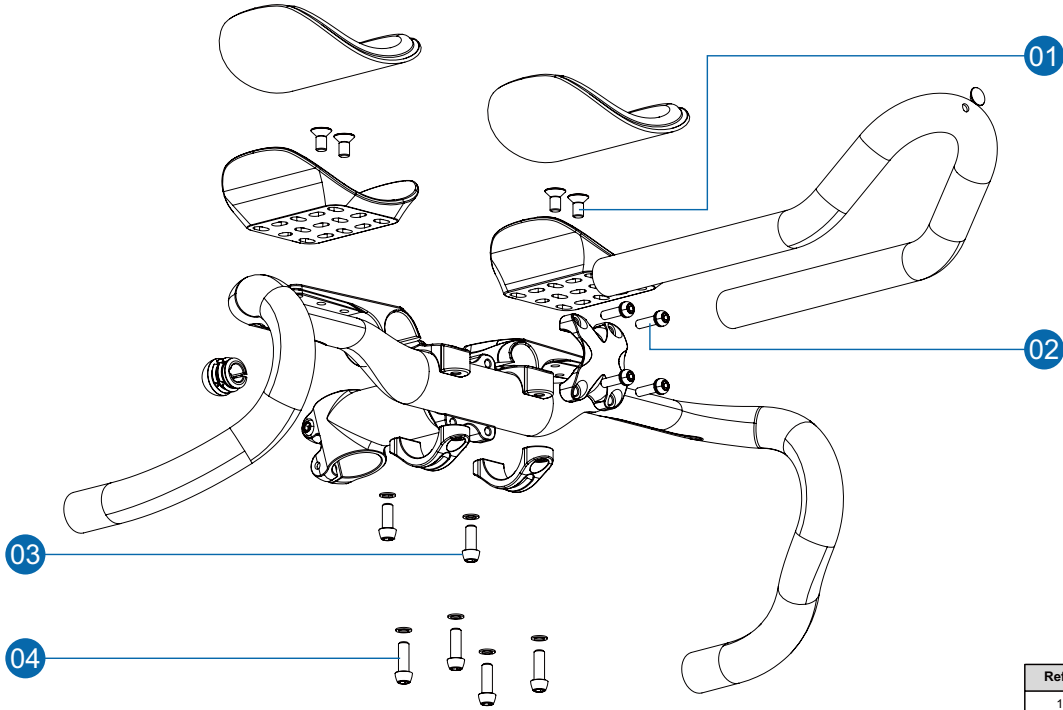


### 1/TWENTY

W	W1	W2
400	480.1	503.9
420	500.1	523.9
440	520.1	543.9



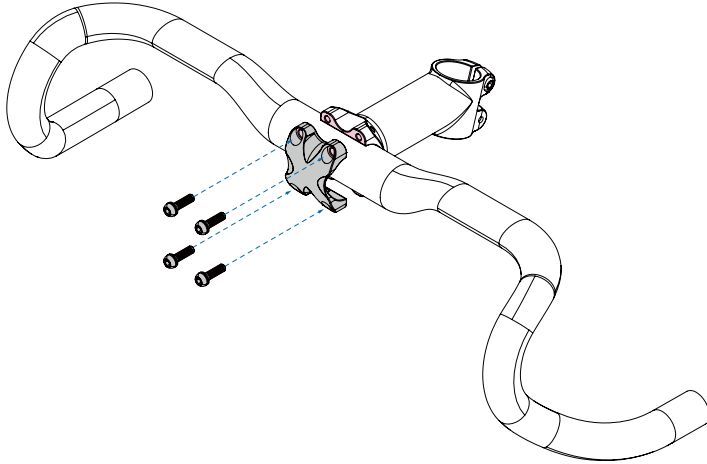
# MAX TORQUE SETTINGS



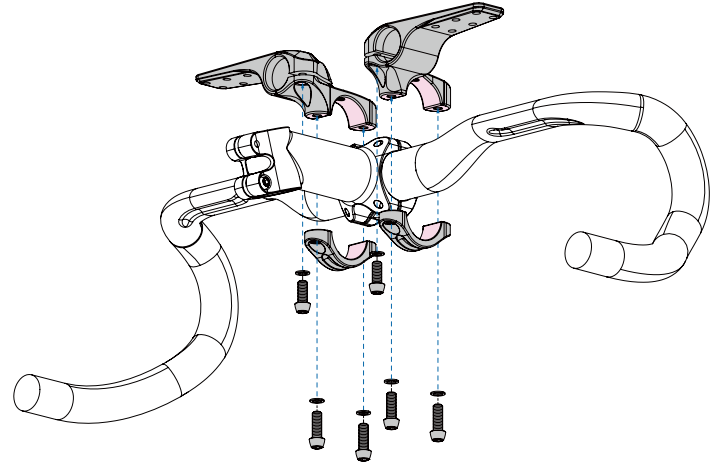
Ref.#	Location	Torque
1	Armrest Bolts	4.7Nm (42 inlbft)
2	Stem clamp	6Nm (53 inlbft)
3	Extension clamp	6Nm (53 inlbft)
4	Handlebar clamp	6Nm (53 inlbft)

## INSTALLATION INSTRUCTIONS

1. Apply a thin coating of assembly compound to the inside faces of the stem clamp.
2. Install the stem as per the manufacturers instructions.
3. Torque the stem bolts to the manufacturers specification, being careful to not exceed 6Nm(53in1bf).



1. If you are using aerobars with this handlebar.
2. Apply a thin coating of assembly compound to the inside faces of the aerobar bracket clamp.
3. Install the aerobar as per the manufacturers instructions.
4. Torque the aerobar bracket bolts to the manufacturers specification, being careful to not exceed 6Nm(53in1bf).



**WARNING:**  
Overtightening the handlebar clamp may lead to cracking and possible failure of the handlebar.

 **WARNING**

- Profile Design Worldwide Two Year Limited Warranty.
- Profile Design, LLC (distributor) warrants to the original retail purchaser ("you") that the Profile Design product for which you received this warranty is free from defects in material and workmanship for (2) two years from the date of original retail purchase. For more details on this warranty, its exclusions and/or how to make a claim under the warranty please call +1 310.747.0085 extension 161 or visit [www.profile-design.com/pages/warranty](http://www.profile-design.com/pages/warranty)



2677 El Presidio Street  
Long Beach, CA 90810  
Ph: 310-884-7756

[www.profile-design.com](http://www.profile-design.com)

© Profile Design LLC