

***PROFILE
DESIGN*** 

SUPERSONIC BTA

REVISION 01-11-22-2023

INTRODUCTION

Thank you for purchasing this Profile Design BTA Bracket. These instructions apply to the Supersonic BTA.

Please read these instructions thoroughly before attempting to install this item. Proper installation is required for compliance with Profile Design's warranty policy. If you are not familiar with installation of Aerobars or their accessories, please seek the assistance of your local Profile design dealer by logging on to www.profile-design.com and using "dealer search" or by calling Profile Design's customer service number p.# 888.800.5999.

Note to Dealers: If you install this product for the consumer, please provide him/her with this owner's manual after installation.

Tools and materials required:

- 4mm Hex Wrench
- 5mm Hex Wrench
- Torque Wrench with a 4mm & 5mm Hex fitting
- Grease such as Finishline Premium Grease

Your BTA kit should contain:

- One (1) alloy BTA bridge
- One (1) Bracket top J5 BTA
- One (1) Bracket bottom J5 BTA
- Two (2) M5x10mm mounting bolts
- Two (2) M5x14 mm mounting bolts
- Four (4) Washer

Products compatible with this BTA

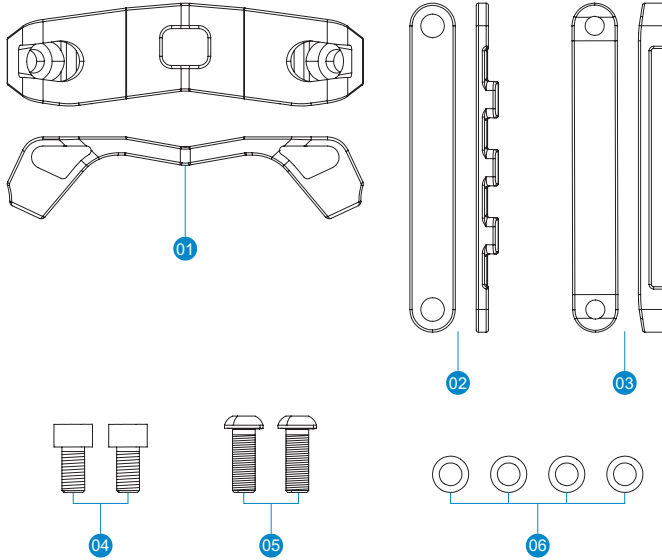
- Supersonic aerobar brackets
- Any Profile Design bottle cage
- Profile Design HSF 800 kit or Aero HC kit

If anything is missing from the BTA kit please contact your dealer.

Please note that threaded areas have been pre-treated by Profile Design during production with a special blue thread locking compound. This special compound is easy to detect on the threads of all bolts provided. If you cannot detect this thread locking compound or you are re-installing the bolt, re-apply a suitable thread locking compound as available from Loctite® or another company before assembly.

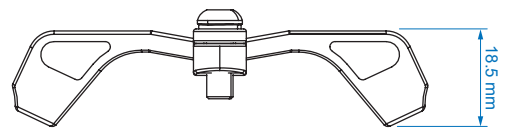
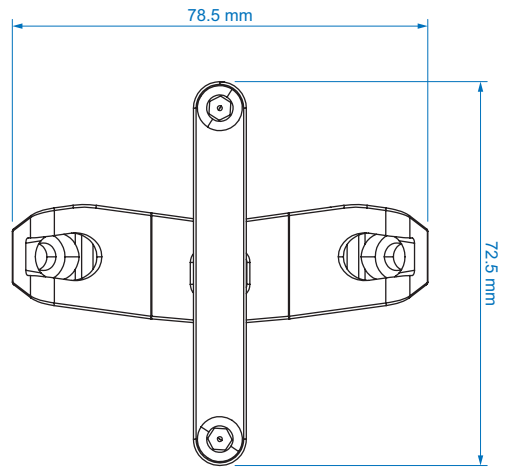
WARNING: Periodically check the BTA bracket for damage, particularly for scratches through the anodised coating (aluminium parts) or clearcoat (carbon parts) that could lead to degradation and weakening of the base material. Replace your BTA bracket if you notice any damage from use or accident.

COMPONENT LIST

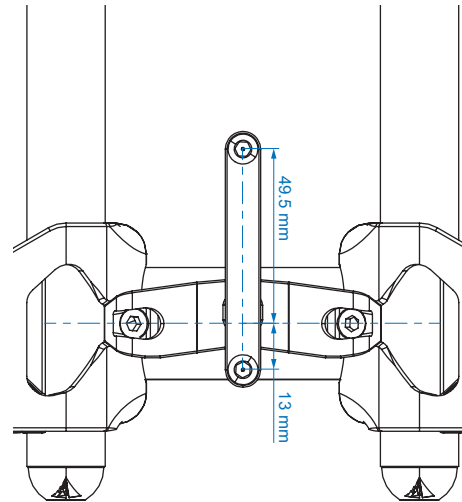
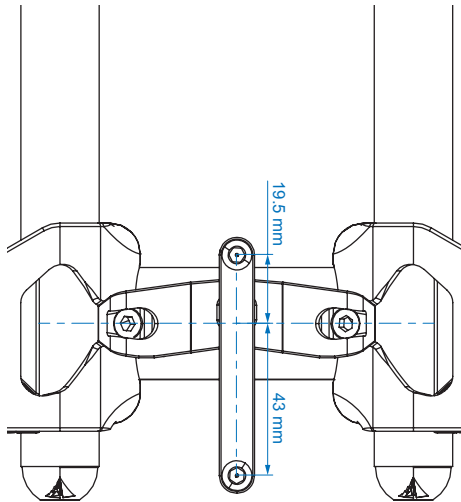


Ref.#	Part.#	QTY. Req.	Part Description
1	683186	1	Bridge J5 BTA
2	189348	1	Bracket top J5 BTA
3	189349	1	Bracket bottom J5 BTA
4	313605	2	Bolt-M5x10mm SHB
5	313587	2	Bolt-M5x14mm BHB
5	275565	4	Washer

PART DRAWINGS

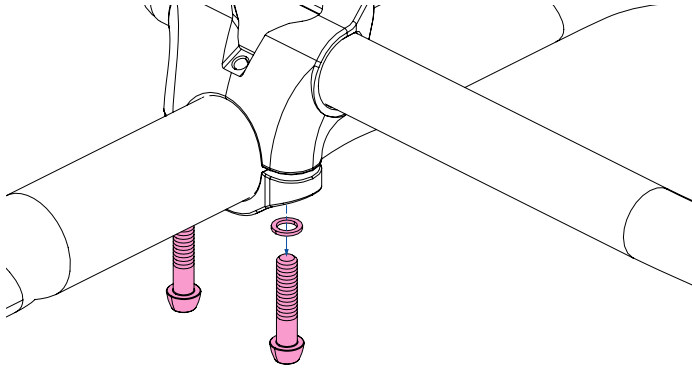


PRODUCT SPECIFIC SETUP LIMITATIONS

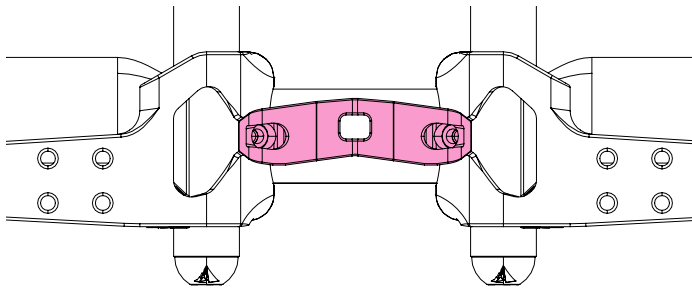


INSTALLATION INSTRUCTIONS

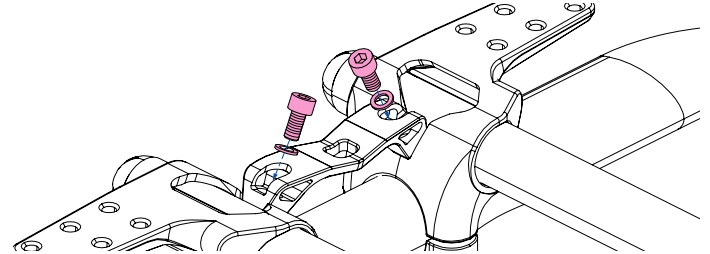
1. Loosen the bolts in the aerobar clamps so the clip on brackets are free to move on the basebar.



2. Measure and record the aerobar angle first.

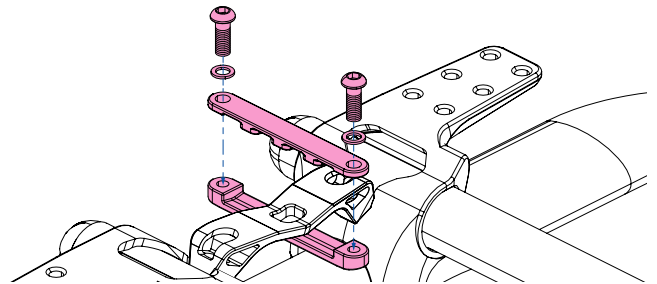


3. Install the bridge piece into the supersonic brackets using the 4mm hex wrench, and use the 4mm torque fitting to tighten the mounting bolts to 4Nm.



4. Once you are happy that the supersonic brackets are evenly positioned relative to the stem and the aerobar is at the correct angle – use the 5mm fitting on the torque wrench to tighten the supersonic brackets to 6Nm.

5. Drop the cage mounting bolts through the cage and top mounting plate and position the mounting plate on the bridge, once you are happy with the mounting plate position bring the bottom mounting plate up into position and fasten with the cage mounting bolts.



*Make sure the mounting plate is sitting securely in the square hole on the bridge before tightening the cage mounting bolts to 3Nm.

WARRANTY POLICY

- Profile Design Worldwide Two Year Limited Warranty.
- Profile Design, LLC (distributor) warrants to the original retail purchaser ("you") that the Profile Design product for which you received this warranty is free from defects in material and workmanship for (2) two years from the date of original retail purchase. For more details on this warranty, its exclusions and/or how to make a claim under the warranty please call +1 310.747.0085 extension 161 or visit www.profile-design.com/pages/warranty



2677 El Presidio Street
Long Beach, CA 90810
Ph: 310-884-7756

www.profile-design.com

© Profile Design LLC