



UniFi® | SWITCH 16 XG

10G 16-Port Managed Aggregation Switch

Model: US-16-XG

Non-Blocking Throughput Switching

Maximum Performance and Low Latency

10G Ethernet SFP+ and RJ45 Ports



10G Aggregation Switch for Enterprise Networks

Build and expand your network with Ubiquiti Networks® UniFi® Switch 16 XG, part of the UniFi Enterprise System. The US-16-XG is a fully managed, 16-port, 10G fiber switch that enhances network capacity by providing high-bandwidth aggregation connectivity to multiple switches in your network.

The US-16-XG offers an extensive suite of advanced Layer-2 switching features and protocols.

Switching Performance

The US-16-XG offers the forwarding capacity to simultaneously process traffic on all ports at line rate without any packet loss.

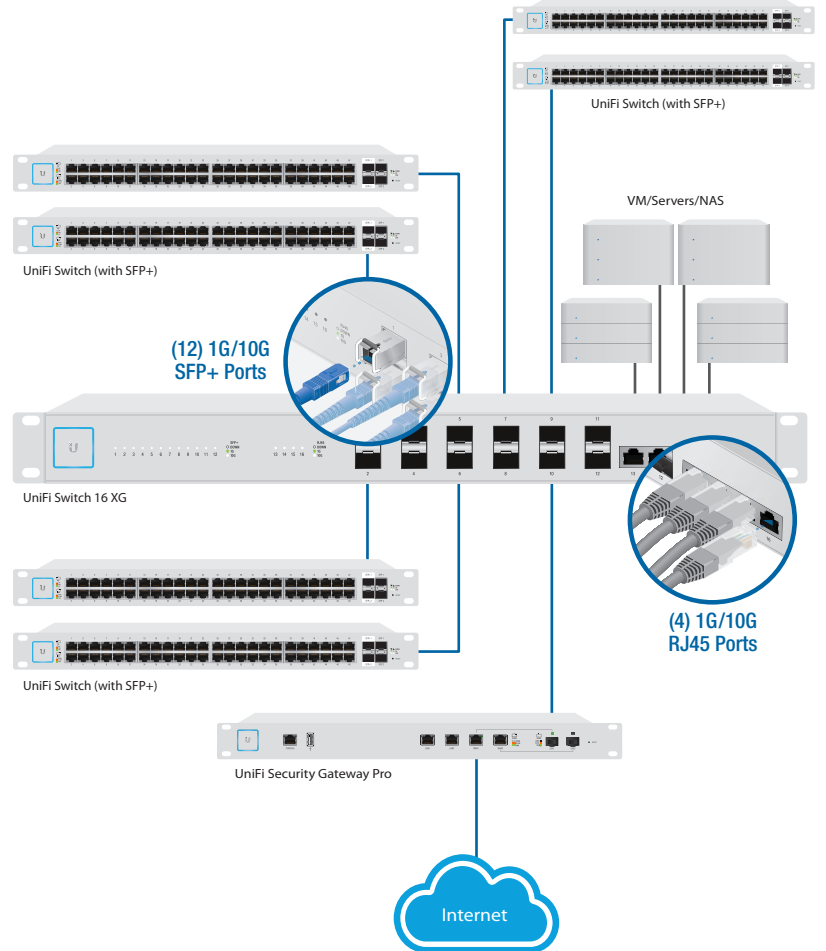
The total non-blocking throughput is up to 160 Gbps.

10G High-Capacity Links

The US-16-XG offers maximum performance and low latency as an aggregation switch.

For fiber connectivity, it features 12 SFP+ ports. For copper connectivity, the US-16-XG offers four RJ45 ports that support 10GBASE-T, the standard for 10 Gbps connections using Cat6 (or higher) cabling and RJ45 connectors.

Deployment Example



The US-16-XG connects to the following:

- Multiple UniFi Switches and a 1G/10G router via SFP+ ports
- VM, Server, NAS, or other network devices via 1G/10G RJ45 ports



UniFi Controller

Designed for convenient management, the UniFi Controller software allows admins to configure and monitor the UniFi Switch and other UniFi devices using a graphical user interface. You can download it from www.ubnt.com at no cost.

Multi-Site Management

A single instance of the UniFi Controller running in the cloud can manage multiple UniFi sites within a centralized interface. Each site is logically separated and has its own network monitoring, configuration, maps, statistics, and admin accounts.

Switch Configuration

You can access any managed UniFi Switch through the UniFi Controller to configure a variety of features:

- Operation mode (switching, mirroring, or aggregate) per port
- Network/VLAN configuration
- Jumbo frame and flow control services
- Network settings
- Storm control setting per port
- Spanning tree configuration
- 802.1x control and RADIUS VLAN
- Debug terminal option for command-line interface

Switch Port Status

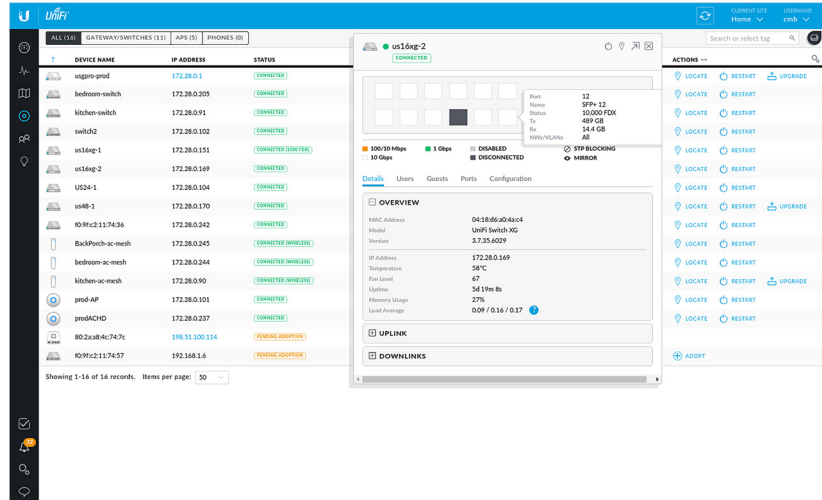
You can also view status information for each port:

- Connection speed and duplex mode
- TX/RX data rates
- Network/VLAN setting



Dashboard

The *Dashboard* tab provides a visual representation of your network's status. Basic information is provided for each network segment.



Device Configuration

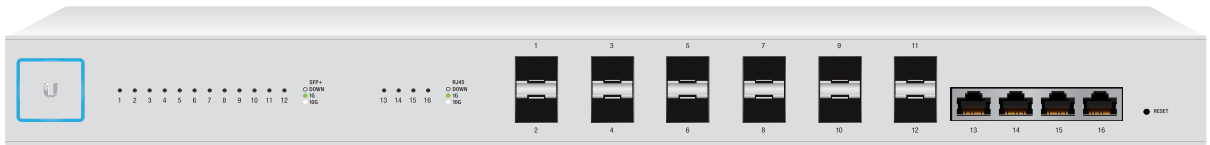
The *Devices* screen displays the UniFi devices discovered by the UniFi Controller. You can access each managed device for device details and configuration.

Models

UniFi Switch 16 XG

Model: US-16-XG

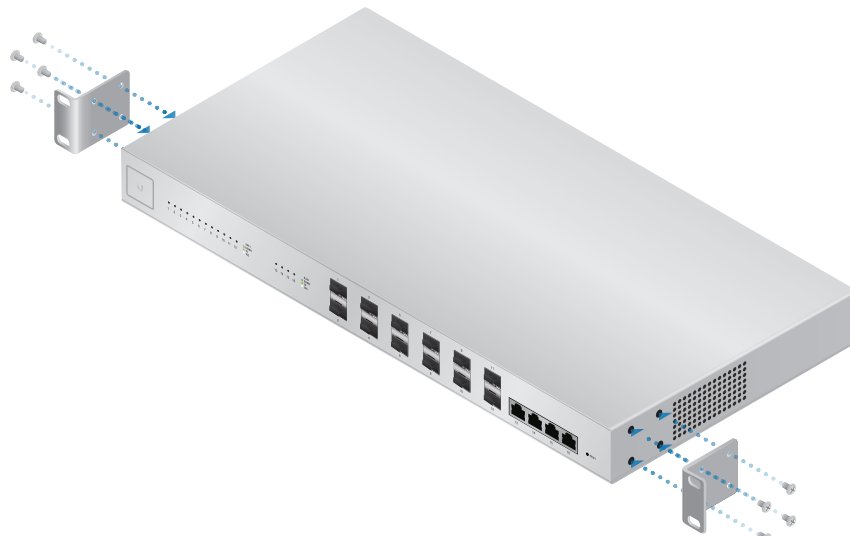
- (12) 1G/10G SFP+ Ports
- (4) 1G/10G RJ45 Ports
- (1) RJ45 Serial Console Port
- Non-Blocking Throughput: 160 Gbps
- Switching Capacity: 320 Gbps
- Forwarding Rate: 238.10 Mpps
- Rack Mountable with Mount Brackets (Included)
- DC Input Option (Redundant or Stand-Alone)



Front Panel



Back Panel



Place on a desktop or attach the mounting brackets to install in a rack.

Hardware Specifications

US-16-XG				
Dimensions	443 x 221 x 43 mm (17.44 x 8.70 x 1.69")			
Weight	Without Mount Brackets		With Mount Brackets	
	2.62 kg (5.78 lb)		2.71 kg (5.97 lb)	
Enclosure Characteristics	SGCC Steel			
Total Non-Blocking Throughput	160 Gbps			
Switching Capacity	320 Gbps			
Forwarding Rate	238.10 Mpps			
Max. DC Power Consumption	36W (Excludes SFP/SFP+ Modules)			
Power Method	AC		DC	
	100-240VAC/50-60 Hz, Universal Input		DC 56W, 57 to 20V, with 48/24VDC Terminal Block	
Supported Voltage Range	100 to 240VAC		57 to 20VDC	
Power Supply	AC/DC, Internal, 56W DC			
LEDs Per Data Port	Speed/Link/Activity			
Sound Level*	Fan Level 0	Fan Level 1	Fan Level 2	Fan Level 3
	1.0 dBr	10.7 dBr	12.2 dBr	12.8 dBr
Networking Interfaces	(12) 1/10 Gbps SFP+ Ethernet Ports (4) 1/10 Gbps RJ45 Ethernet Ports			
Management Interface	(1) RJ45 Serial Port Out-of-Band, Ethernet Ports In-Band			
Certifications	CE, FCC, IC			
Rack Mount	Yes, 1U High			
ESD/EMP Protection	Air: ± 24 kV, Contact: ± 24 kV			
Operating Temperature	-5 to 40° C (23 to 104° F)			
Operating Humidity	5 to 95% Noncondensing			
Shock and Vibration	ETSI300-019-1.4 Standard			

* Background noise level: 27.5 dBA

Max. Number of Supported SFP+ Modules		
UF-MM-10G	UF-SM-10G	UF-RJ45-10G
12	12	4