



EXTRALINK 42U 600X1000 BLACK | RACK CABINET | STANDING



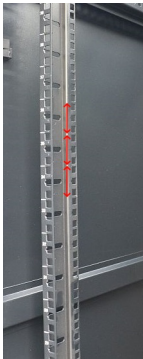
OVERVIEW

The Extralink rack cabinet is designed for wall mounting in offices, network server rooms and CCTV installation control rooms. The outer walls are made of cold-rolled steel sheet. Equipped with a tempered glass pane, the front door can open to the left or right.



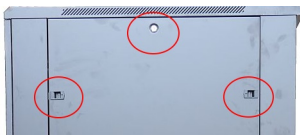
THE HEIGHT OF THE CABINET IS CLEARLY MARKED

The vertical rails are marked with the appropriate height, which amounts to 42U (unit), which provides enough space for mounting more devices. The total height of the wardrobe is 199 cm



EASY DISASSEMBLY OF SIDE WALLS

Snaps on the side walls allow their removal. Locks and keys are included



SIMPLE CABLE ROUTING

There are as many as 8 cable pull-outs in the bottom panel of the cabinet, which reduces the risk of pinching or tangling them.



CEILING WITH A VENTILATION OUTLET AND ADDITIONAL CABLE ENTRIES

There is a ventilation outlet on the ceiling of the cabinet, there are also 2 additional grommets for pulling cables.



MAIN FEATURES

- Front and rear doors
- Front door in tempered glass with a small lock
- The door can be opened to the left or right
- Excellent design, precise dimensions, careful workmanship
- Adjustable feet, heavy duty wheels
- Adjustable cable entry dimensions for the top cover and bottom plate
- Efficient and reliable connection of the body using the series connection kit
- Removable side panels for easy maintenance



SPECIFICATION

Cabinet type	Standing
Cabinet height	42U
Depth	1000mm
Colour	Black
Type of door	Glazed
Width	600mm