

Instructions for using the Sewing by Sarah 1/4" Quarter Inch Quilting Presser Foot with Free Magnetic Seam Guide

How to change the foot on a low shank sewing machine

Removing a presser foot

Raise the needle and the presser foot lever.

The way to remove the presser foot depends on the brand of machine you have. Sometimes it just snaps off but with most machines you have to push a button or lever on the presser foot holder.

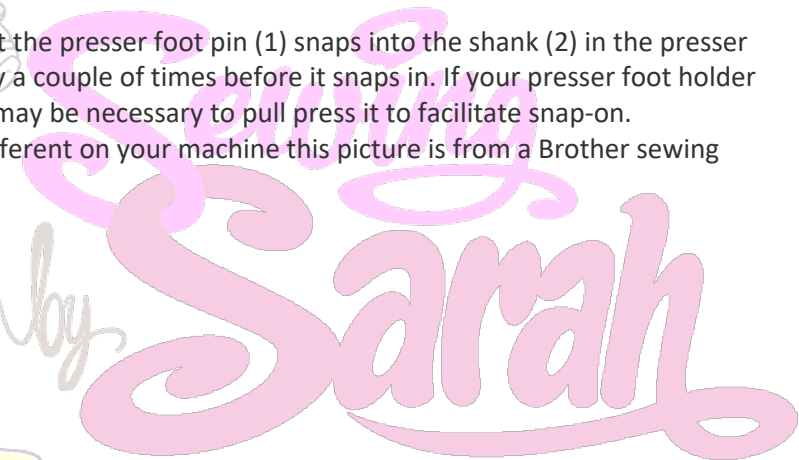
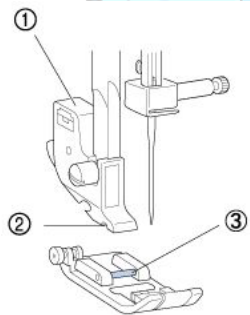
Consult your machine's user manual to find the way to remove the presser foot.

Attaching a presser foot

Lower the presser foot lever so that the presser foot pin (1) snaps into the shank (2) in the presser foot holder (3). You may have to try a couple of times before it snaps in. If your presser foot holder has a lever or button for release it may be necessary to pull press it to facilitate snap-on.

the presser foot holder can look different on your machine this picture is from a Brother sewing machine.

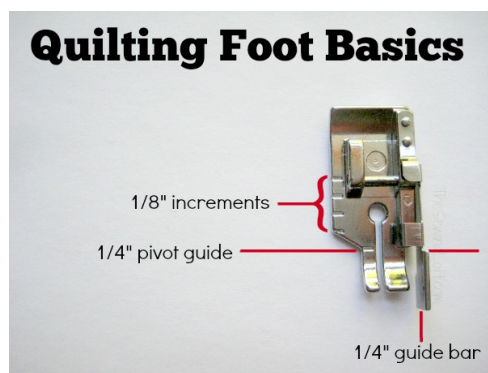
3





1/4 " Quilting Foot with guide

The 1/4" quilting foot with guide is a presser foot designed specifically for sewing neat, straight, 1/4" seams. The important part of this presser foot's name is "1/4". The regular 1/4" quilting foot has a wider back surface that narrows in the front into two asymmetrical toes. The outer edge of the wider toe on the right marks the 1/4" seam allowance. The raised markings on the metal are designed to assist with measuring—the wider distances on the right side are each 1/4" apart, and the narrow markings on the left side are each 1/8" apart. These markers act as guides to help you create clean, precise corners and crossings by pivoting at the right spot.



Tips:

- It can **only** be used in a single needle application with the center straight stitch.
- The markings on this foot are measurement guides designed to help keep your stitches exact.

Tips for using the Quilting Foot:

1. Align the raw edge off two fabric layers against the guide at right side of foot. Lower foot and stitch away.
2. The narrow toe on the left side can be used as a guide for small piece work or mini quilts.
3. Maintaining a perfect 1/4" seam while turning a corner is easy. Stitch until the edge of fabric aligns with the mark on the narrowest part of foot; leave needle and down position, lift up pressure foot and pivot. Return presser foot to down position and continue stitching with fabric against the guide. This technique works for both quilting and top stitching.

Check out this video for more:

<https://thesewingloftblog.com/quilting-foot-patchwork-foot/>



Magnetic Seam Guide



The Magnetic Seam Guide helps you achieve the perfect seam each time you sew. With a seam guide you can match one side of the fabric to the other, and minimize mistakes, and uneven stitching.

How the Magnetic Seam Guide Works

A magnetic seam guide is a small metal tool that attaches to any stitch plate of a sewing machine, near the presser foot. The magnet helps the fabric that is pulled forward by your sewing machine to stay firmly in place, giving you a solid, reliable guide for setting seam allowances and sewing straight lines. Choose a seam allowance width and easily remove or reposition the guide when you change your mind. A magnetic seam guide stays solidly in place on the stitch plate, thanks to its strong magnetic "grip" It limits your chances for mistakes.

ATTENTION: While it is safe to use the Magnetic Seam Guide on the stitch plate computerized sewing machines, touching the other parts of the sewing machine (e.g. the LCD screen) can cause serious damage to your machine.