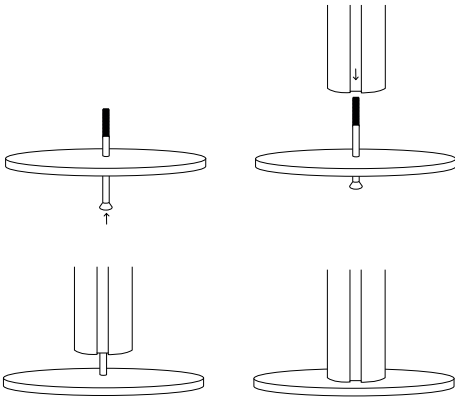


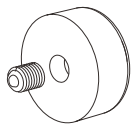
Installing a Freestanding Frame



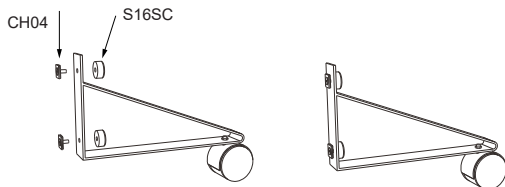
There are 3 types of feet used on the frames, Oval Round and Castor. You will need to install the feet differently depending on which you have.

Round and Oval Feet

One end of the upright will have a large counter sunk screw which should be removed and passed through the countersunk hole in foot. While inserted through the foot attach to the threaded upright and tighten with the allen key provided.



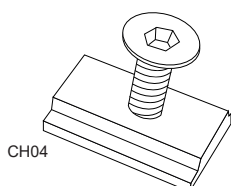
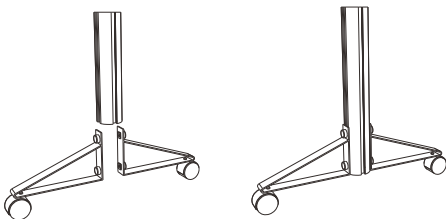
S16SC



Castor Feet

CH04 will slide into the profile of the castor feet through the S16SC cap.

Slide the assembled feet into the slot on the up right at 90 degrees to each other as shown on the drawing.

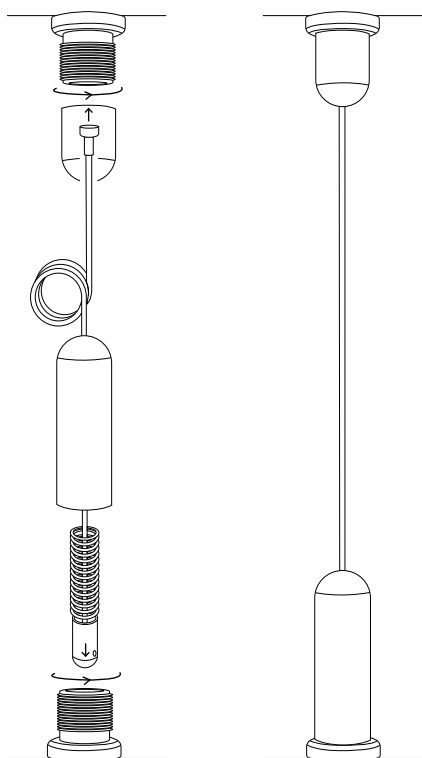
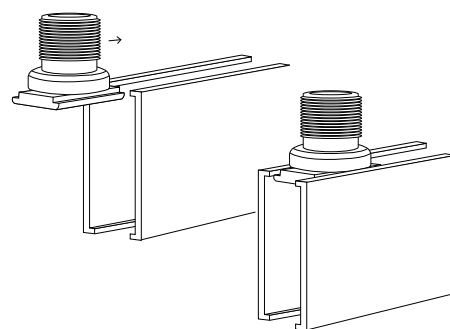
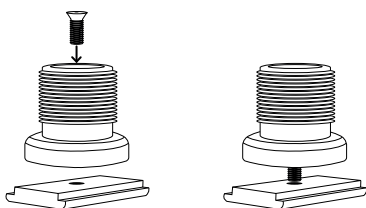
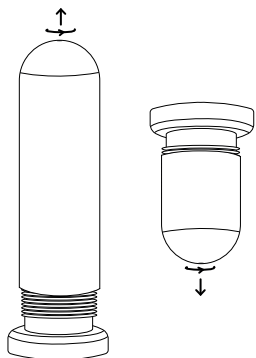


CH04

Please note, if you have cables or rods to be hung and delivery note shows CH04 (square toggle) these should be added loosely with the floor and ceiling connections from the top and bottom of the cable or rod before adding the crossbars.

Fixing a Cable or Rod to the Frame

- Remove the floor and ceiling connection from either the cable or the rod.
- Pass the screw from the toggle, through the centre of the floor or ceiling connector and loosely connect the toggle, with the screw passing through the raised side of the table.
- Loosely add these to the cross bars before assembling the frame
- Position the bottom fixing in the location required and tighten the toggle screw, ensuring that the toggle has rotated beneath the sides of the slot before being finally tightened.
- Repeat for the ceiling fixing.
- Do the same to the floor with the fixing plate from the cable tensioner.



- Hang the cable from the ceiling fixing allowing it to unwind.
- Undo the small brass fitting attached to the cable inside the tensioner with the 1.5mm allen key provided, slide this up the cable and with the cable pulled tight, retighten this fitting flush with the top edge of the floor fixing.
- Cut off the cable so that it sits 5mm below the top edge of the floorfixing.
- Screw the outer body of the tensioner onto the floor fixing.
- You should feel the tension starting to be taken up just before the tensioner is screwed fully down.

Note. Check that the cable will pull gently out against the spring. If there is no movement the tension is too strong and brass fitting needs to be moved down the cable.

Remember, the cable is only as strong as your ceiling fixing.