

INSTRUCTION MANUAL



Bellema
Wearable Breast Pump

Bellema Wearable Breast Pump

Features:

- Tucks discreetly in your bra so you can pump anytime and anywhere.
- No cords or tubes
- Saves time
- Hands free
- 3 modes
- 9 levels of suction
- BPA free
- Single pump - standard size shield 24mm.
- Charge for 3 hours for 2 hours of on the go pumping time**

** on the go pumping timing will vary depending on the level of suction used for pumping

SAFE · CONVENIENT · EFFECTIVE

Our high quality, enclosed breast pumps are free of toxic silica gel such as bisphenol A and phthalates to ensure comfort and safety.

Bellema Wearable breast pump offers a quick and mobile way to pump milk. Simple and straight forward installation, all accessories are removable, easy to clean, and can be disinfected in boiling water.

INDEX

IMPORTANT INFORMATION	1
PRODUCT DESCRIPTION	2
CLEANING	3
Breast pump operation	
Breast pump interface	4
How to assemble	5
Directions for use	
In the bra placement	7
Shut down and remove the breast pump	7
Sitting position during breast pumping	8
TROUBLESHOOTING	9
WARRANTY	10

IMPORTANT INFORMATION

- Standard size shield 24mm.
- Only use with the original power cord.
- Do not use a cleaning brush in the valve as this can damage the valve.
- For individual use only, this product should not be shared.
- Do not clean or disinfect the pump unit and adaptor.
- The lithium ion battery is built in - do not remove.
- Do not exceed 6 hour charging time.
- Not to be used during pregnancy.
- It is recommended you replace the valve and diaphragm every 2-3 months with frequent expressing. One spare valve comes in your box.
- Do not pump for more than 30 mins to avoid causing nipple damage.
- If you are having pain with pumping, ensure you are pumping on a low setting. If pain persists, discuss with a health professional ie your GP, midwife or a Lactation Consultant.

PRODUCT DESCRIPTION

1 x Silicone breast shield

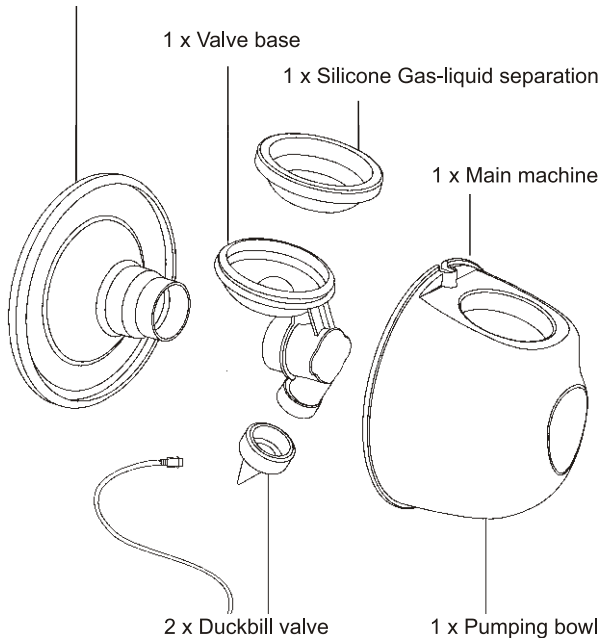
1 x Valve base

1 x Silicone Gas-liquid separation

1 x Main machine

2 x Duckbill valve

1 x Pumping bowl

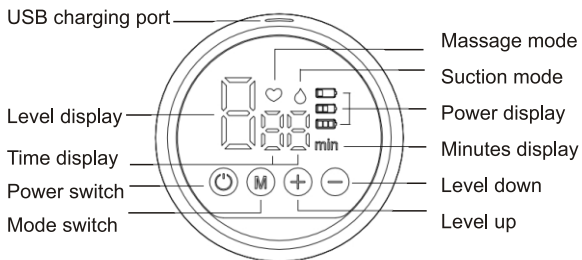


CLEANING

- Only clean/sterilize the parts that touch milk
- Rinse with cold water immediately after pumping.
- Warm soapy water wash with liquid detergent.
- Rinse with warm water.
- Sterilize parts using your chosen method. Follow CDC sterilizing guidelines.
- We recommend using the Bellema UV sterilizer .

BREAST PUMP OPERATION

Breast pump operation panel



Use the breast pump

- Press "⏻" for power on (Battery indicator display).
- Press "⏻" for shutdown (Battery indicator display).
- After starting up, it will automatically enter the preset 2-minute massage mode, then switch to breast pumping or mixing mode and automatically shut down for 30 minutes.

Each mode has 9 levels.

Massage mode: press \oplus or \ominus , increase or decrease the suction.

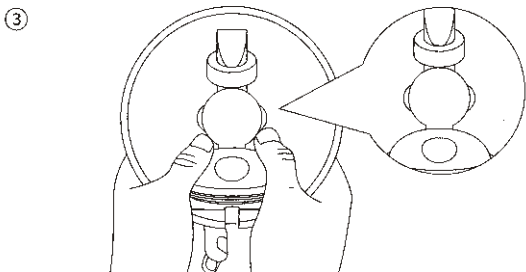
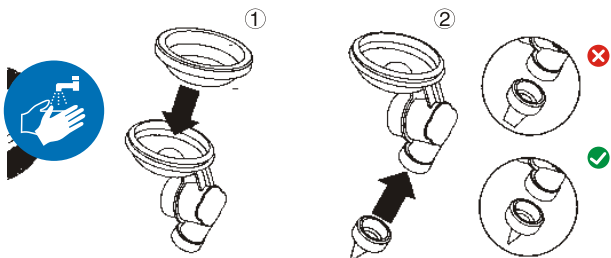
Suction mode: press \oplus or \ominus , increase or decrease the suction.

Mixed mode: press \oplus or \ominus , increase or decrease the number of massages.

Note: In the mixing mode, the levels of suction and rhythm are the same as those of massage and breast sucking, so you can adjust and adjust your levels before switching to the mixing mode.

BREAST PUMP OPERATION

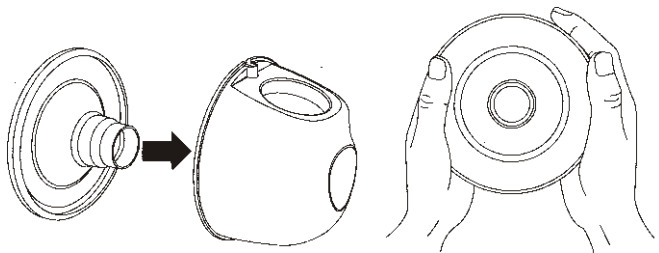
How to assemble



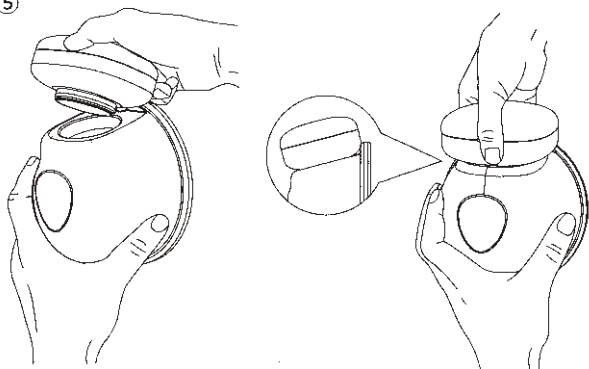
BREAST PUMP OPERATION

④

How to assemble

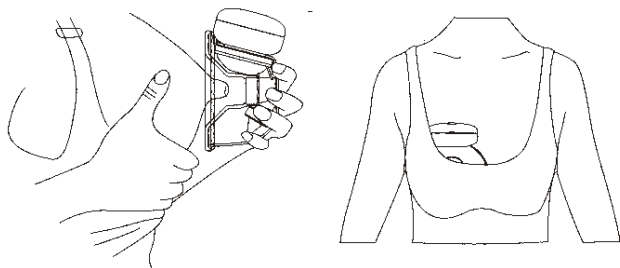


⑤

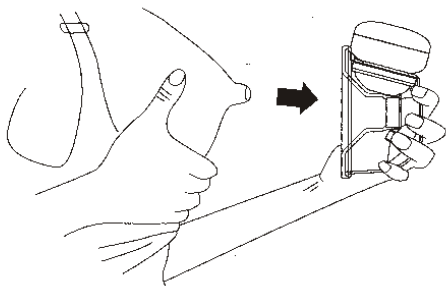


DIRECTION FOR USE

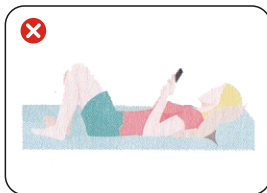
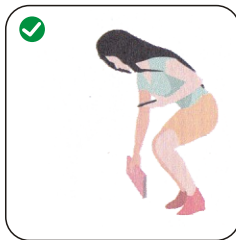
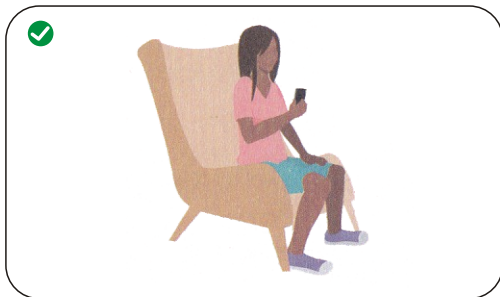
In the bra placement



Shut down and remove the breast pump



DIRECTION FOR USE



TROUBLESHOOTING

The problem	The proposal
Unable to pump any milk	<ul style="list-style-type: none"> ▪ Make sure pump is assembled correctly and there is suction. ▪ Relax and try again. ▪ Try heat pre feed.
Weak or no suction	<ul style="list-style-type: none"> ▪ Make sure the valve is installed in the correct position and inspect for any damage or wear and tear. ▪ We recommend replacing the valve and diaphragm every 2-3 months with frequent expressing.
Pain during pumping	<p>If you experience any pain or discomfort, ensure you are pumping on a low setting first. If pain persists, stop pumping and contact a Health Professional such as your GP, Midwife or a Lactation Consultant.</p>
Device not powering on	<ul style="list-style-type: none"> ▪ Check your power outlet by plugging in another electrical device to make sure the powersource is working properly. ▪ Ensure you are not plugged into an extension cord. ▪ Check your connections-power adaptor is connected to the pump unit ▪ Make sure the battery is fully charged.

WARRANTY

Is warranted to the original owner only and is non-transferrable. More than Milk warrants all breast pump models from the original date of purchase, against all defects in material and workmanship. Pump motor is covered under the warranty for 12 months. Consumable parts are not covered under the warranty. More than Milk has the right to repair in the first instance and will replace if deems necessary.

OUR DETAILS

More than Milk
hello@morethanmilk.co.nz
www.morethanmilk.co.nz
@morethanmilknz

Find us on social media.
Follow us, comment and tag us in your pictures.
We love seeing them.
Questions, worries or concerns, send us an email.