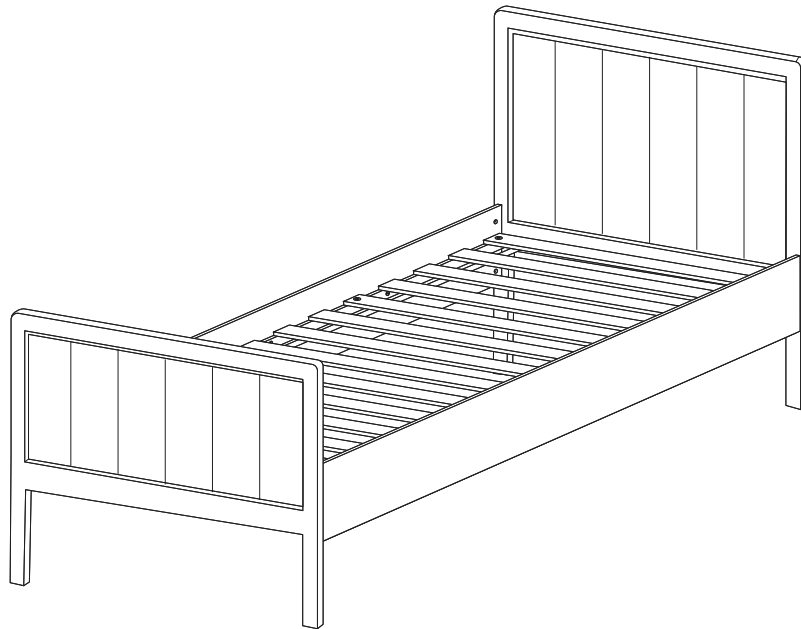




www.gltc.co.uk

## Lulworth Single Bed



**Thank you for shopping with GLTC, we hope you enjoy having this product in your home.**

We know assembling furniture, toys or accessories is not everyone's favourite way to spend their time, so we've tried to make assembling this item as quick and painless as possible.

### **A few important pointers before you start:**

- Please read the instructions right through before you start, and check that all the components have been included in the pack; we find separating all the hardware into piles makes it easier to be sure that everything is present and correct.
- Make sure you have the right tools. Allen keys are provided if required, but screw drivers and other tools are not. You'll find details of the tools you need at the beginning of the instructions.
- It's a good idea to build the unit in the room where you are going to be using it, to avoid the need to move it after it's been assembled.
- Do not throw away any packing materials until assembly is complete, just in case you accidentally discard smaller parts or hardware.

Assembly Difficulty



easy - medium - hard



two-person job

VI

21/06/2021

# IMPORTANT READ CAREFULLY - KEEP FOR FUTURE REFERENCE.

## Safety Warnings:

- This bed conforms to BS 8509:2008 +A1:2011
- WARNING. Not suitable for children under 4 years.
- This bed is suitable for mattress size 190cmL x 90cmW with a minimum height of 15cm.
- Adult assembly required.
- This product is heavy, we recommend that you build it where you are planning to use it.
- Assemble and use on a flat and level surface.
- Do not use power tools in the construction of this product.
- Unassembled product contains small parts which may present a choking hazard.
- Children should be kept away from the product during assembly to avoid any possible risk of injury.
- WARNING. Do not place this bed near heat sources, windows or other furniture.
- Children are likely to play, bounce, jump and climb on beds, therefore for your child's safety, this bed should either be placed tight against the wall or have a minimum gap of 30cm between the wall and the side of the bed.
- Check fixtures and fittings regularly and tighten as necessary.
- This bed can be dismantled for storage or transportation.

- WARNING. Do not use this bed if any part becomes broken, torn or missing. Please contact GLTC Customer Services on 0344 848 6000 immediately to arrange for suitable replacement parts.

## Customer Service:

- If you find that any components are missing or damaged, please do not begin assembly and do not use the item. Please contact GLTC Customer Services on **0344 848 6000** immediately.

## Product Care:

- Wipe clean using a soft damp cloth followed by a dry cloth.
- Do NOT use cleaning products which contain ammonia, solvents or abrasive material.
- Do NOT expose the item to extremes of heat and humidity.
- Please ensure the room in which this bed is to be used is well ventilated or aired regularly in order to keep humidity low in and around the bed.

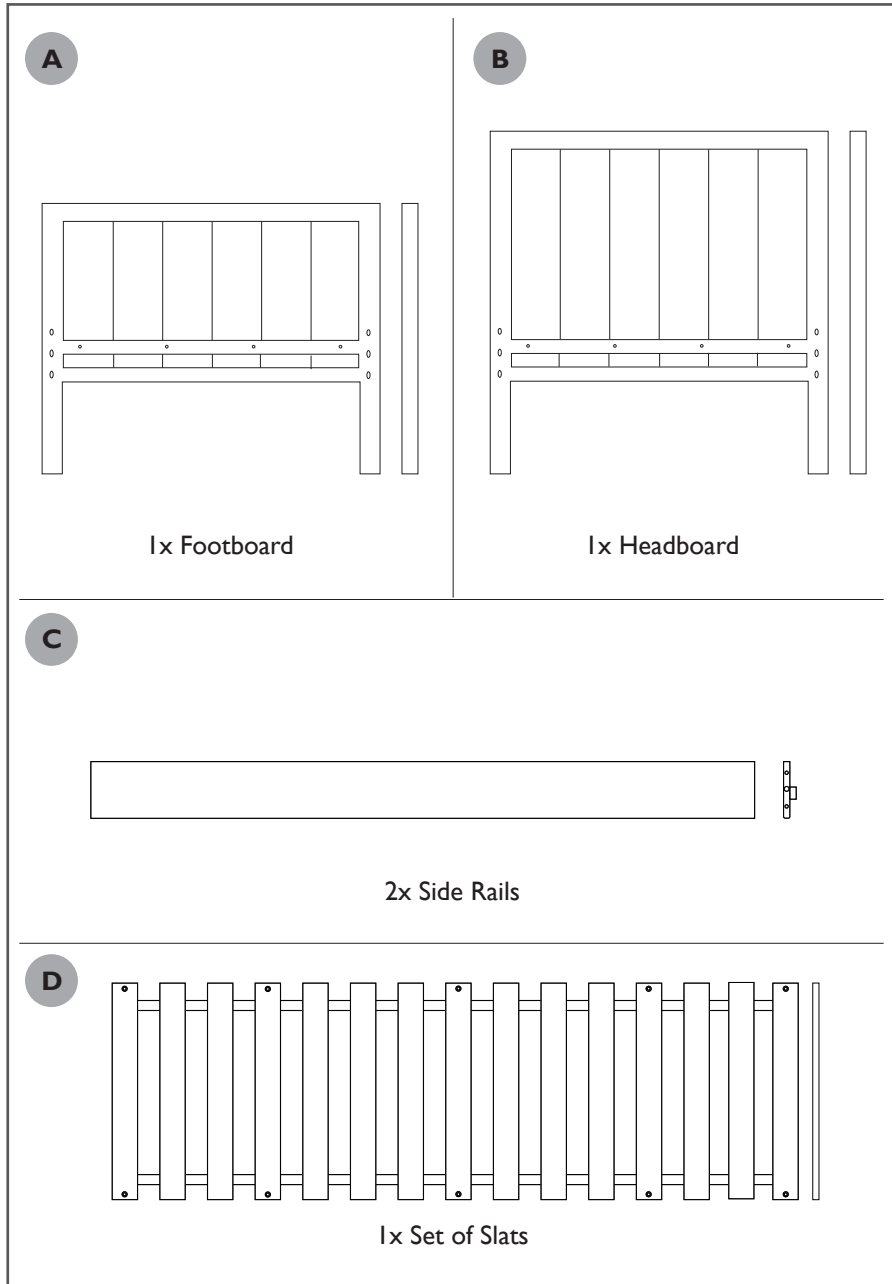
## Could we do better?

If there is anything you think could be improved in these instructions or in the assembly of this product we'd be grateful if you could let us know; we'll pass any helpful hints and tips on to other customers via our website and update the instructions.

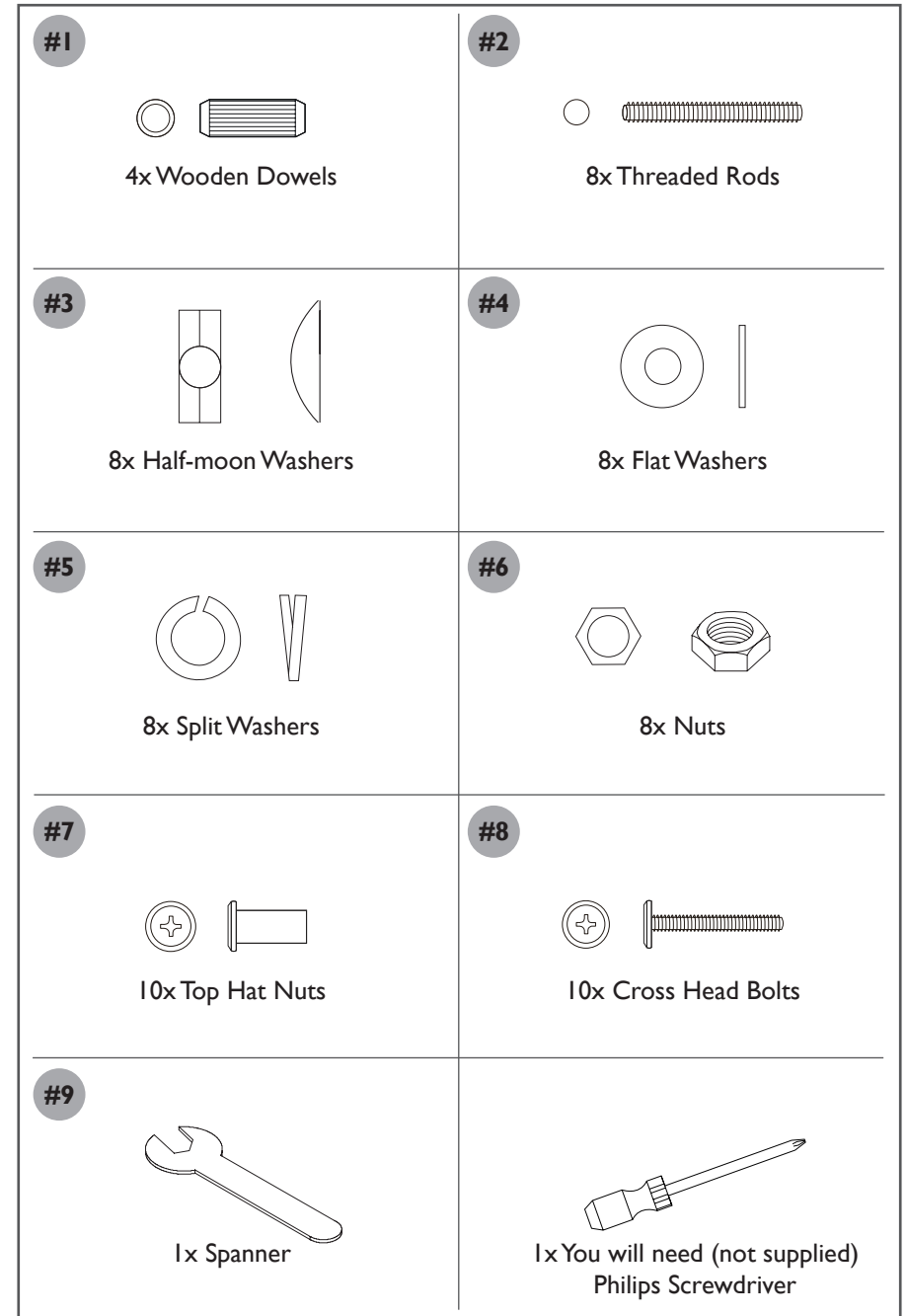
All you need to do is drop us a line at [instructions@gltc.co.uk](mailto:instructions@gltc.co.uk)

Thank you

## Component Check List



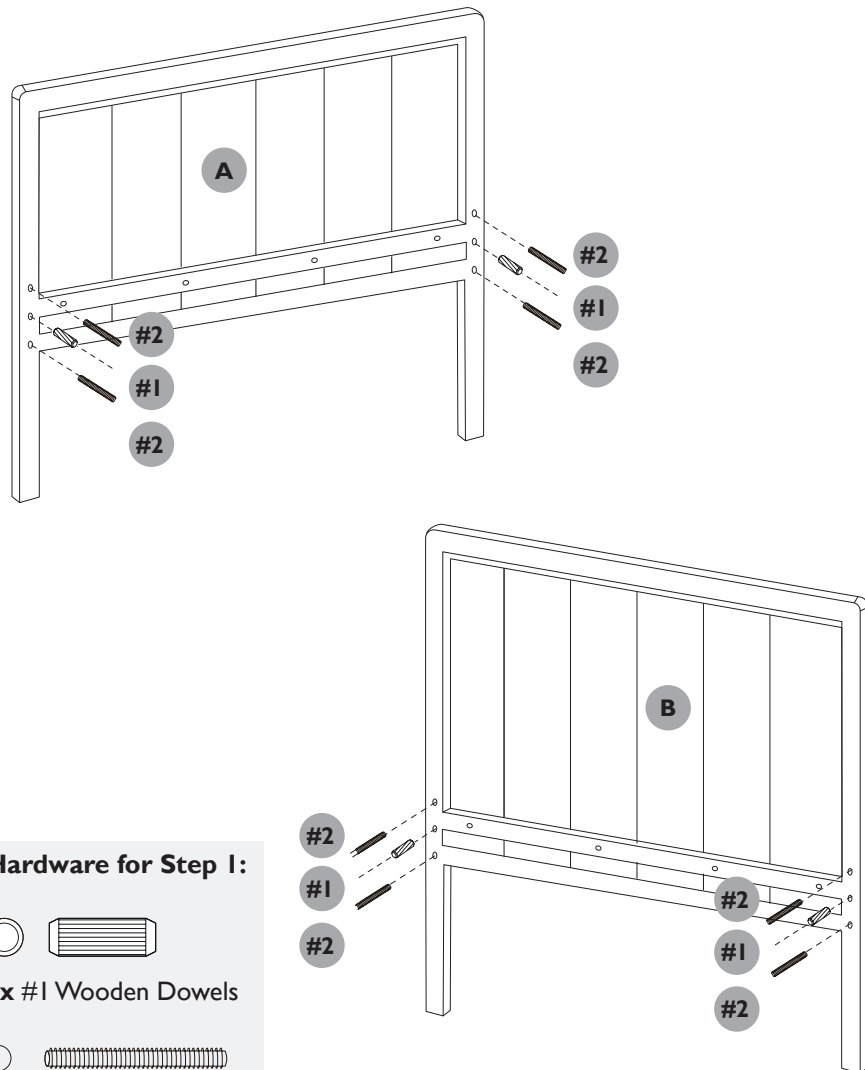
## Component Check List



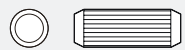
## STEP 1:

Working on a protective surface such as a carpet or a rug, insert 4x threaded rods (#2) and x2 wooden dowels (#1) on BOTH footboard panel (A) and headboard panel (B) as shown.

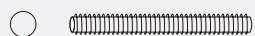
*Note: Insert the threaded rods with your fingers and insert them as far as they will go.*



### Hardware for Step 1:



4x #1 Wooden Dowels



8x #2 Threaded Rods

## STEP 2:

**Note: Two people will be needed for this step. You risk damaging the bed if you do it on your own.**

Lift 1x side rail (C) and align with the threaded rods and dowel on one side of headboard panel (B) ensuring the slat support rails are facing inwards, and push into position.

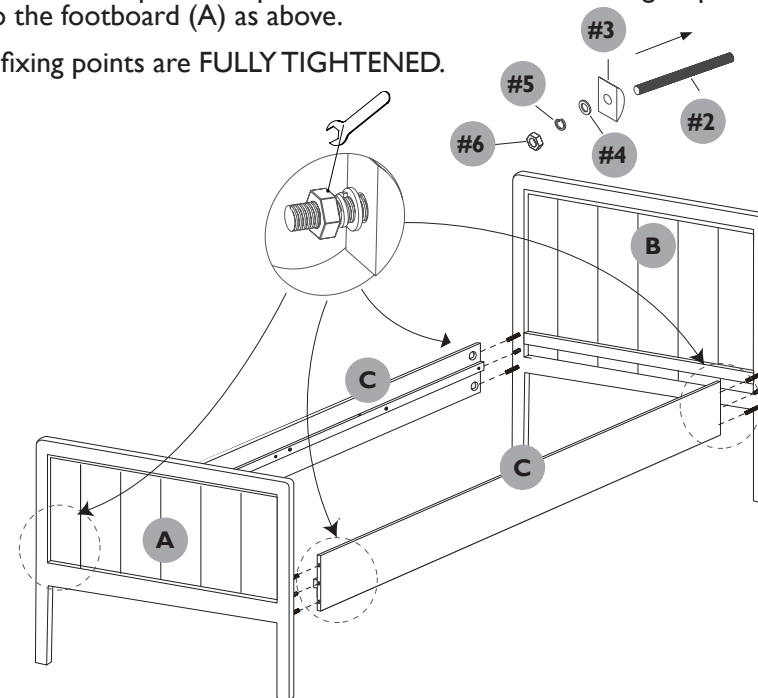
To secure the side rail, thread 1x half-moon washer (#3) followed by 1x flat washer (#4), 1x split washer (#5) onto the threaded rod visible in the large hole on the side rail. Finally add 1x nut (#6) and fully tighten with the spanner (#9) provided. REPEAT fixing for the 2nd hole.

*Note: Create a support to put under the end of the fixed side rail using the protective packaging in the box whilst you work on the other side or gently lower the side rail to rest on the floor.*

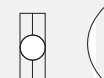
Now take the remaining side rail (C) and REPEAT the fixing step above on the other side of the headboard panel (B).

Once both side rails are securely attached to headboard, bring footboard panel (A) to the open ends of the side rails. Align the hardware on the footboard with the drill holes on the rails and push into position. Now REPEAT the fixing step of the side rails (C) to the footboard (A) as above.

Ensure ALL 8x fixing points are FULLY TIGHTENED.



### Hardware for Step 2:



8x #3 Half-moon Washers



8x #4 Flat Washers



8x #5 Split Washers



8x #6 Nuts

### STEP 3:

Install the webbed slats (D) with the webbing face downwards. Secure them with 10x bolts (#8) and 10x top hat nuts (#7) using a Philips screwdriver.

*Note: Insert the top hat nut on the underside of the rail first and hold it in position whilst you tighten the bolt from the top.*

**Your product is now ready to use.**

