



# Flagman of America

☎ 860.678.0275

✉ jordan@flagman.com

🌐 Flagman.com

🏠 22 E Main St, Avon CT 06001

## Installation Instructions for Square Base Flagpoles - 20 to 40 ft

### Step # 1 : Dig hole

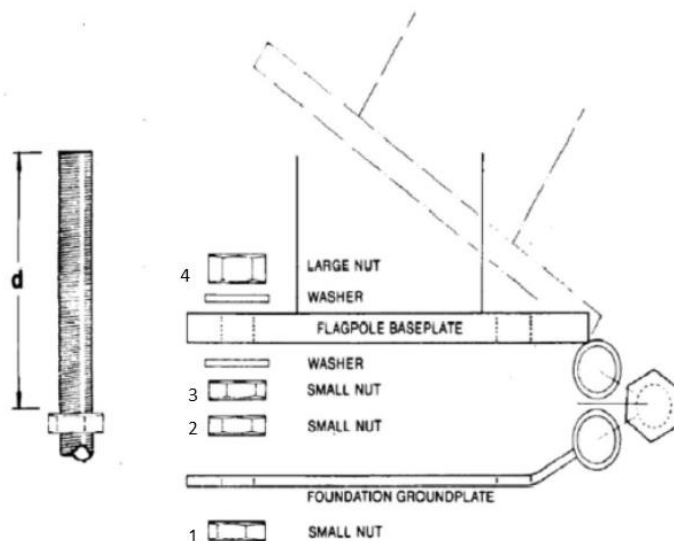
HOLE SIZE					
Pole height (ft.)	20	25	30	33/35	40
Minimum hole diameter (in)	20	20	26	26	26
Hole depth (in)	32	40	44	50	56

### Step # 2 : Install Anchor Rods

1. Screw a small nut (# 1) onto each anchor rod to about 2.5" from the top of the anchor rod (distance "d" on drawing below).
2. Insert each anchor rod in the holes through the bottom of the ground plate so that each anchor rod sticks above the ground plate by about 2.5" and secure them with a small nut (# 2).
3. Place a 2 X 4 wood stud flat over the hole making sure it is horizontal.
4. Place the ground plate with the anchor rods over the 2 x 4 stud so that the anchors are hanging inside the hole, and placing the hinge part in the proper direction to be able to raise the pole.
5. Pour concrete in the hole.

Foundation ground plate  
about 1.5" above concrete  
(equal to height of 2 x 4 stud)

Bolt thread length above  
foundation ground plate (d)  
about 2.5"



### Step # 3 : Raise Flagpole

When the concrete has cured the flagpole may be raised.

1. Screw another small nut (# 3) on each anchor and place a washer on top of each nut.
2. Position the pole so that the hinge tube on the base plate is in-between the two hinge tubes on the ground plate.
3. Align the hinge tubes on the base plate and the ground plate and install the hinge pin.
4. Erect the flagpole and screw a large nut (# 4) over a washer on each anchor rod above the base plate.
5. Adjust the flagpole vertically by adjusting the small nuts (# 3) below the base plate.
6. Tighten all large nuts (# 4).
7. Check on a regular basis to make sure the large nuts (# 4) are tight and not becoming loose because of pole vibrations.